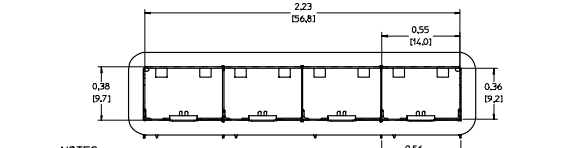
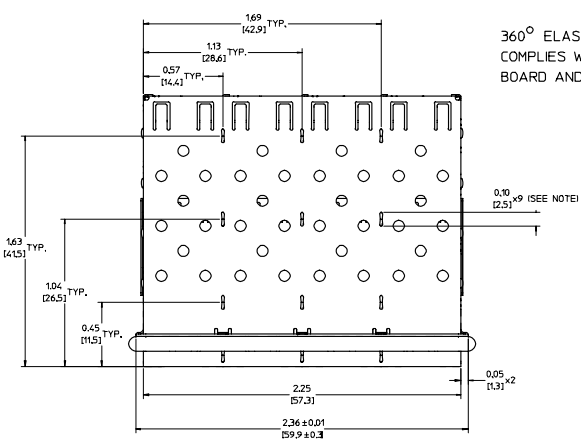


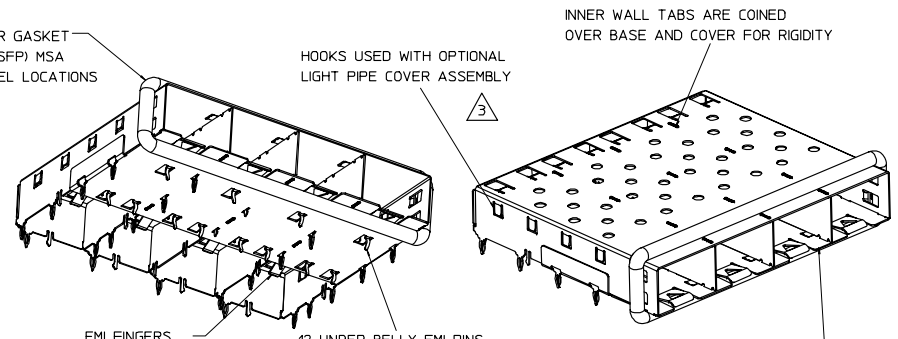
20 19 18 17 16 15 14 13 12 11 74728 9 8 7 6 5 4 3 2 1

L
K
J
I
H
G
F
E
D
C
B
A

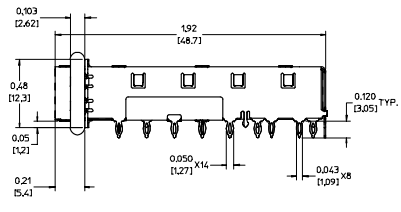


- NOTES:
- PRESS FIT LEGS 0.120" LONG-
0.062 [1.57] MINIMUM PCB THICKNESS FOR SINGLE SIDED USE.
0.118 [3.00] MINIMUM PCB THICKNESS FOR BELLY TO BELLY USE.
 - MATERIAL: COPPER ALLOY
PLATING: NONE
- NOTE: A PRE-PLATED NICKEL VERSION IS AVAILABLE.
REFER TO DOCUMENT SD-74728-420
- REFERENCE DOCUMENTS:
PRODUCT SPECIFICATION: PS-74728-000
COSMETIC SPECIFICATIONS: WI-HP-7-2774 AND WI-HPA-7-0093
TEST SUMMARY: TS-74728-0415
 - MATES WITH SERIES 74728, LIGHT PIPE COVER ASSEMBLY.
 - THIS PART MEETS THE RESTRICTION OF HAZARDOUS SUBSTANCES IN ELECTRICAL AND ELECTRONIC EQUIPMENT (ROHS) DIRECTIVE (2002/95/EC).

360° ELASTOMER GASKET
COMPLIES WITH (SFP) MSA
BOARD AND BEZEL LOCATIONS



DIMENSIONS OF EACH INNER CAGE DESIGNED TO FUNCTION WITH SMALL FORM-FACTOR PLUGGABLE (SFP) TRANSCEIVER



ECT. NO.: USV2004-0275 DESIGNED BY: KJMONSON/02/06/01/24 CHECKED BY: BRUSSELL/02/06/01/24 APPROVED BY: BRUSSELL/02/06/01/25	QUALITY SYMBOLS	GENERAL TOLERANCES (UNLESS SPECIFIED)	SCALE 3:1	DESIGN UNITS METRIC	THIRD ANGLE PROJECTION	REVISE ON CAD ONLY
	▽-0	4 PLACES ± --- ± --- 3 PLACES ± --- ± 0.005 2 PLACES ± 0.13 ± 0.1 1 PLACE ± 0.25 ± ---	mm INCH	DIMENSION STYLE IN/MM	DRAWN BY DATE	TITLE
	▽-0	ANGULAR ± 1°			CHECKED BY DATE	MOLEX INCORPORATED
		DRAFT WHERE APPLICABLE MUST REMAIN WITHIN DIMENSIONS			APPROVED BY DATE	MATERIAL NO. DOCUMENT NO. SHEET NO.
					BRUSSELL 2004/10/09 747280415 SD-74728-415 1 OF 5	
THIS DRAWING CONTAINS INFORMATION THAT IS PROPRIETARY TO MOLEX INCORPORATED AND SHOULD NOT BE USED WITHOUT WRITTEN PERMISSION						

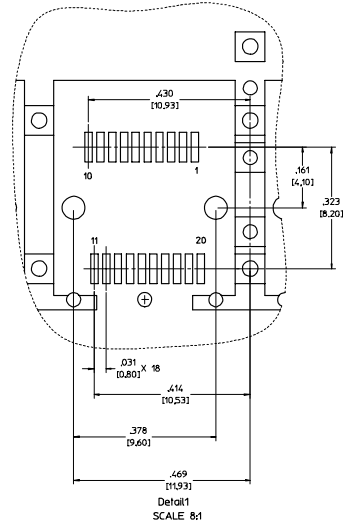
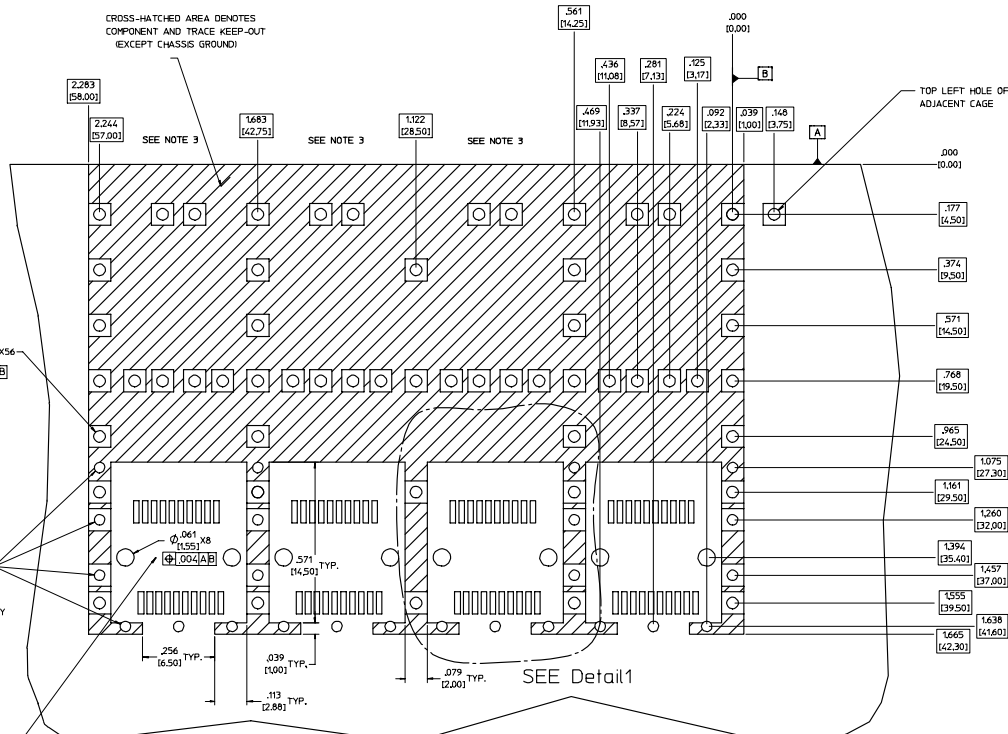
19 18 17 16 15 14 13 12 11 10 9 8 7 6 5 4 3 2 1

20 19 18 17 16 15 14 13 12 11 10 9 8 7 6 5 4 3 2 1

PCB LAYOUT
FOR BELLY TO BELLY MOUNTING

CROSS-HATCHED AREA DENOTES
COMPONENT AND TRACE KEEP-OUT
(EXCEPT CHASSIS GROUND)

HOST CONNECTOR DETAIL



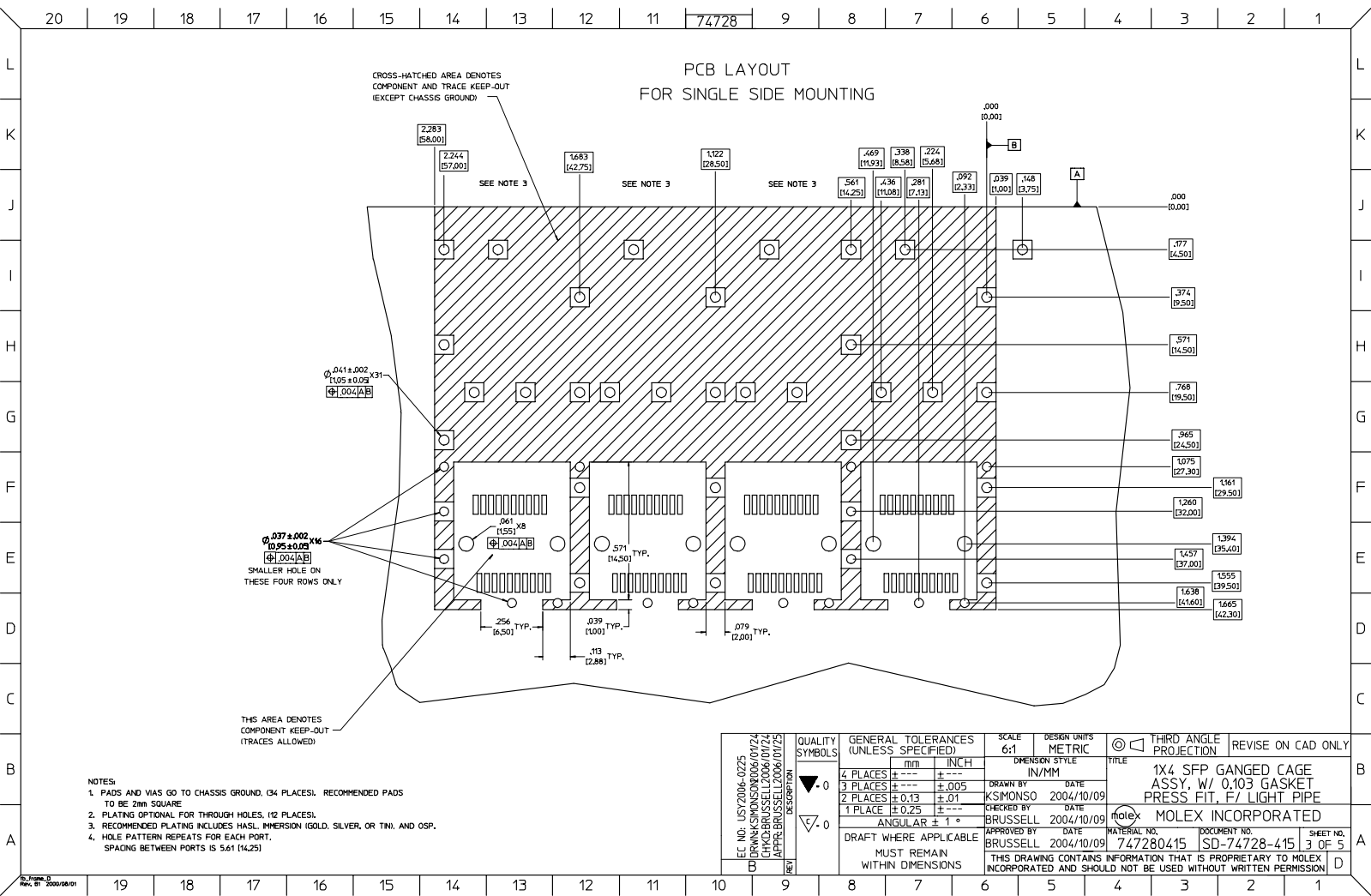
$\phi_{.041 \pm .002} X 56$
 $\phi_{.037 \pm .002} X 24$
 $\phi_{.035 \pm .005}$
SMALLER HOLE ON
THESE FOUR ROWS ONLY

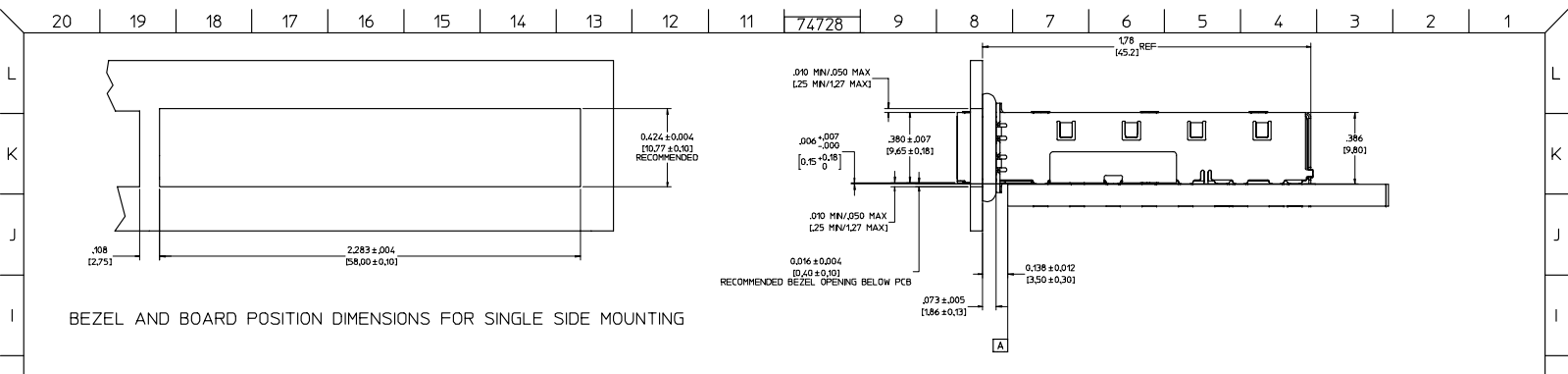
THIS AREA DENOTES
COMPONENT KEEP-OUT
(TRACES ALLOWED)

- NOTES
1. PADS AND VIAS GO TO CHASSIS GROUND. (64 PLACES). RECOMMENDED PADS TO BE 2mm SQUARE
 2. PLATING OPTIONAL FOR THROUGH HOLES. (16 PLACES).
 3. RECOMMENDED PLATING INCLUDES HASL, IMMERSION (GOLD, SILVER, OR TIN), AND OSP.
 4. HOLE PATTERN REPEATS FOR EACH PORT. SPACING BETWEEN PORTS IS 5.61 (14.25)

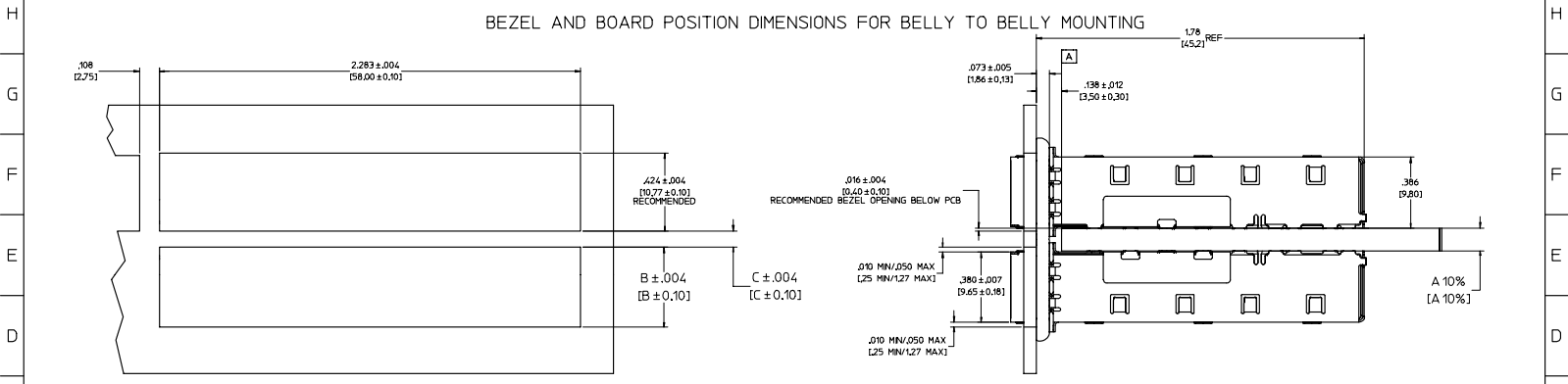
EC. NO.: USV2006-0295 DESIGN: SENSORS06/01/24 CHECKED: BRUSSELL 2006/01/24 APPR: BRUSSELL 2006/01/25	QUALITY SYMBOLS 0 0	GENERAL TOLERANCES (UNLESS SPECIFIED) 4 PLACES ±.005 3 PLACES ±.005 2 PLACES ±.013 1 PLACE ±.025 ANGULAR ± 1°	SCALE 6:1 DESIGN UNITS METRIC DIMENSION STYLE IN/MM	THIRD ANGLE PROJECTION REVISE ON CAD ONLY
		DRAFT WHERE APPLICABLE MUST REMAIN WITHIN DIMENSIONS	DRAWN BY DATE KSMONSO 2004/10/09 CHECKED BY DATE BRUSSELL 2004/10/09 APPROVED BY DATE BRUSSELL 2004/10/09	TITLE 1X4 SFP GANGED CAGE ASSY, W/ 0.103 GASKET PRESS FIT, F/ LIGHT PIPE MATERIAL NO. MOLEX INCORPORATED DOCUMENT NO. 747280415 SHEET NO. SD-74728-415 2 OF 5

19 18 17 16 15 14 13 12 11 10 9 8 7 6 5 4 3 2 1





BEZEL AND BOARD POSITION DIMENSIONS FOR SINGLE SIDE MOUNTING



BEZEL AND BOARD POSITION DIMENSIONS FOR BELLY TO BELLY MOUNTING

NOTE: FOR A GIVEN BOARD THICKNESS (A), DIMENSIONS (B) AND (C) ARE DIRECTLY AFFECTED.
 USE RECOMMENDED DIMENSIONS AND TOLERANCES TO AID IN DEVELOPING BEZEL OPENING.
 FOR EXAMPLE USING A BOARD THICKNESS OF 0.125" THE RECOMMENDED VALUES WOULD BE:
 A = .125/3.18 ± 10%
 B = .434/11.03 ± .004
 C = .288/7.23 ± .004

IEC NO. USV2004-0275 DENKONSON0204/0174 CHKD BRUSSELL 2006/07/24 APPR BRUSSELL 2006/07/25	QUALITY SYMBOLS ▽ -0 ▽ -0	GENERAL TOLERANCES (UNLESS SPECIFIED)		SCALE 4:1	DESIGN UNITS METRIC	THIRD ANGLE PROJECTION REVISE ON CAD ONLY	TITLE 1X4 SFP GANGED CAGE ASSY, W/ 0.103 GASKET PRESS FIT, F/ LIGHT PIPE
		4 PLACES ± --- ± ---	3 PLACES ± --- ± .005	2 PLACES ± 0.13 ± .01	1 PLACE ± 0.25 ± ---		
DRAFT WHERE APPLICABLE MUST REMAIN WITHIN DIMENSIONS		APPROVED BY DATE BRUSSELL 2004/10/09		MATERIAL NO. DOCUMENT NO. 747280415 SD-74728-415		SHEET NO. 4 OF 5	
THIS DRAWING CONTAINS INFORMATION THAT IS PROPRIETARY TO MOLEX INCORPORATED AND SHOULD NOT BE USED WITHOUT WRITTEN PERMISSION							

20 19 18 17 16 15 14 13 12 11 74728 9 8 7 6 5 4 3 2 1

DATE	REV	CHANGES	COMMENTS
2004/08/17	1	PRELIMINARY DOCUMENT	N/A
2004/10/09	A	INITIAL RELEASE	N/A
2006/01/20	B	ADD PCB AND BEZEL LAYOUTS. UPDATED NOTES.	DOCUMENT CHANGE ONLY

ECT. NO. USV2006-0275 DRAWN BY K.S.MONSO 2004/07/24 CHECKED BY BRUSSELL 2006/07/24 APPROVED BY BRUSSELL 2006/07/25	QUALITY SYMBOLS	GENERAL TOLERANCES (UNLESS SPECIFIED)	SCALE 1:1	DESIGN UNITS METRIC	THIRD ANGLE PROJECTION	REVISE ON CAD ONLY																
	▽-0 ▽-0	<table border="1"> <thead> <tr> <th></th> <th>mm</th> <th>INCH</th> </tr> </thead> <tbody> <tr> <td>4 PLACES</td> <td>± .005</td> <td>± .0005</td> </tr> <tr> <td>3 PLACES</td> <td>± .01</td> <td>± .001</td> </tr> <tr> <td>2 PLACES</td> <td>± 0.13</td> <td>± .01</td> </tr> <tr> <td>1 PLACE</td> <td>± 0.25</td> <td>± .01</td> </tr> <tr> <td>ANGULAR</td> <td>± 1°</td> <td></td> </tr> </tbody> </table>		mm	INCH	4 PLACES	± .005	± .0005	3 PLACES	± .01	± .001	2 PLACES	± 0.13	± .01	1 PLACE	± 0.25	± .01	ANGULAR	± 1°		DIMENSION STYLE IN/MM DRAWN BY DATE K.S.MONSO 2004/10/09 CHECKED BY DATE BRUSSELL 2004/10/09 APPROVED BY DATE BRUSSELL 2004/10/09	MATERIAL NO. 747280415 DOCUMENT NO. SD-74728-415 SHEET NO. 5 OF 5
	mm	INCH																				
4 PLACES	± .005	± .0005																				
3 PLACES	± .01	± .001																				
2 PLACES	± 0.13	± .01																				
1 PLACE	± 0.25	± .01																				
ANGULAR	± 1°																					
DRAFT WHERE APPLICABLE MUST REMAIN WITHIN DIMENSIONS		THIS DRAWING CONTAINS INFORMATION THAT IS PROPRIETARY TO MOLEX INCORPORATED AND SHOULD NOT BE USED WITHOUT WRITTEN PERMISSION																				

19 18 17 16 15 14 13 12 11 10 9 8 7 6 5 4 3 2 1

19/08/01
REV. BT 2000/08/01