

NOTES:

1. PRESS FIT LEGS 0.120" LONG-
0.062 [1.57] MINIMUM PCB THICKNESS FOR SINGLE SIDED USE.
0.118 [3.00] MINIMUM PCB THICKNESS FOR BELLY TO BELLY USE.

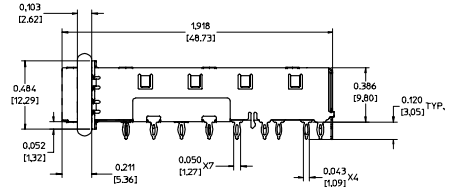
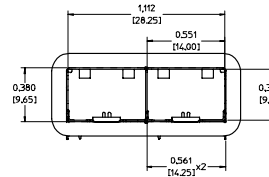
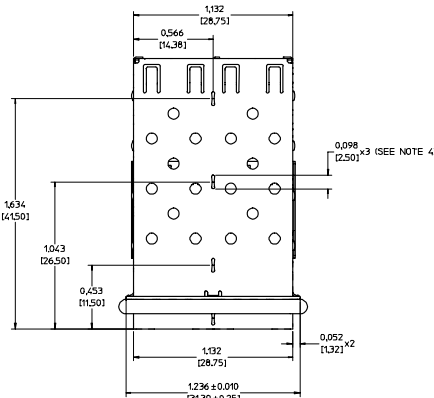
2. MATERIAL: COPPER ALLOY
PLATING: NONE

NOTE: A NICKEL PLATED VERSION OF THIS ASSEMBLY IS AVAILABLE.
REFER TO DOCUMENT SD-74722-004

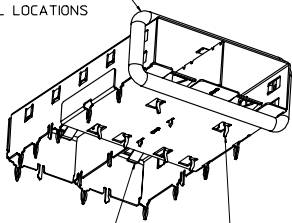
3. REFERENCE DOCUMENTS:
PRODUCT SPECIFICATION: PS-74728-000
COSMETIC SPECIFICATIONS: WI-HP-2774 AND WI-HPA-7-0093
TEST SUMMARY: TS-74722-0001.

4. MATES WITH SERIES 74727. LIGHT PIPE COVER ASSEMBLY.

5. THIS PART MEETS THE RESTRICTION OF HAZARDOUS SUBSTANCES IN
ELECTRICAL AND ELECTRONIC EQUIPMENT (ROHS) DIRECTIVE (2002/95/EC).



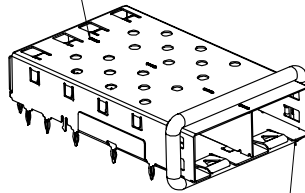
360° ELASTOMER EMI GASKET
COMPLIES WITH (SFP) MSA
BOARD AND BEZEL LOCATIONS



EMI FINGERS
CONTACT ADAPTER

6 UNDER BELLY EMI PINS

INNER WALL TABS ARE COINED
OVER BASE AND COVER FOR RIGIDITY

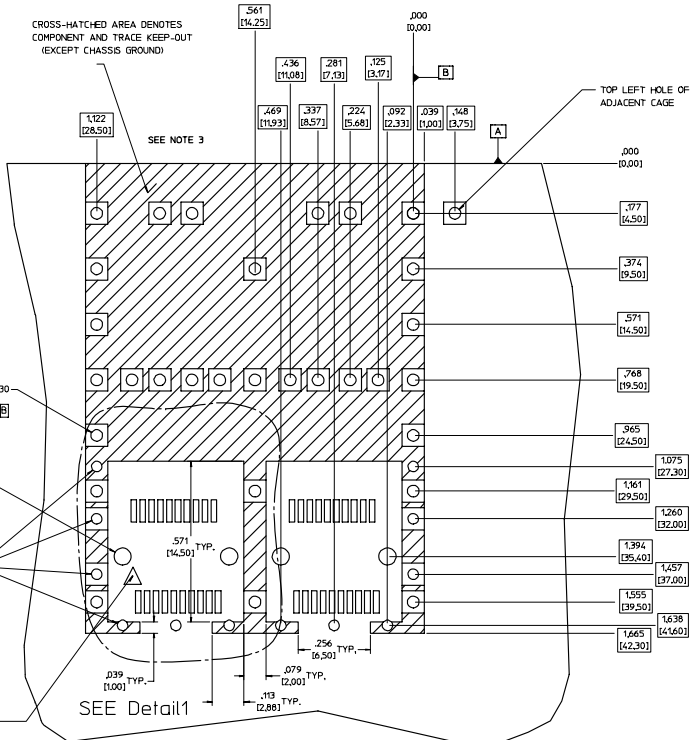


DIMENSIONS OF EACH INNER CAGE DESIGNED
TO FUNCTION WITH SMALL FORM-FACTOR
PLUGGABLE (SFP) TRANSCEIVER

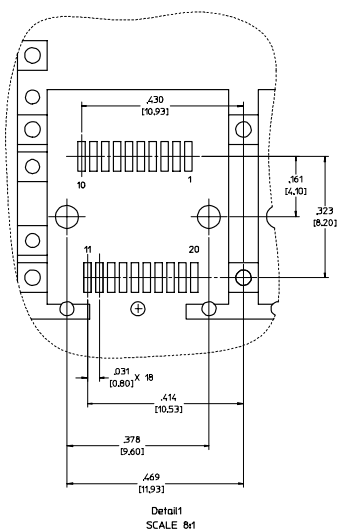
ENTER DESCRIPTION IEC NO. US72004-0073 CHROMIUM APPROVED FOR RELEASE	QUALITY SYMBOLS	GENERAL TOLERANCES (UNLESS SPECIFIED)	DIMENSION STYLE IN/MM	SCALE 3:1	DESIGN UNITS METRIC	THIRD ANGLE PROJECTION	
	4 PLACES ± --- ± --- 3 PLACES ± --- ± 0.05 2 PLACES ± 0.13 ± 0.10 1 PLACE ± 0.25 ± --- ANGULAR ± 1 °	mm INCH ± --- ± --- ± 0.05 ± 0.13 ± 0.10 ± 0.25 ± --- ± 1 °	DRAWN BY KS HONGSO DATE 2003/09/25	DATE 2003/10/27	TITLE 1X2 SFP GANGED CAGE ASSEMBLY, PRESS FIT	MOLEX INCORPORATED	SHEET NO. 1 OF 5
	DRAFT WHERE APPLICABLE MUST REMAIN WITHIN DIMENSIONS	MATERIAL NO. 747220001	DATE 2003/10/27	DOCUMENT NO. SD-74722-001	THIS DRAWING CONTAINS INFORMATION THAT IS PROPRIETARY TO MOLEX INCORPORATED AND SHOULD NOT BE USED WITHOUT WRITTEN PERMISSION		
	APPROVED FOR RELEASE DATE 2006/07/28	APPROVED FOR RELEASE DATE 2006/07/28	APPROVED FOR RELEASE DATE 2006/07/28	APPROVED FOR RELEASE DATE 2006/07/28	APPROVED FOR RELEASE DATE 2006/07/28	APPROVED FOR RELEASE DATE 2006/07/28	APPROVED FOR RELEASE DATE 2006/07/28

PCB LAYOUT
FOR BELLY TO BELLY MOUNTING

CROSS-HATCHED AREA DENOTES
COMPONENT AND TRACE KEEP-OUT
(EXCEPT CHASSIS GROUND)



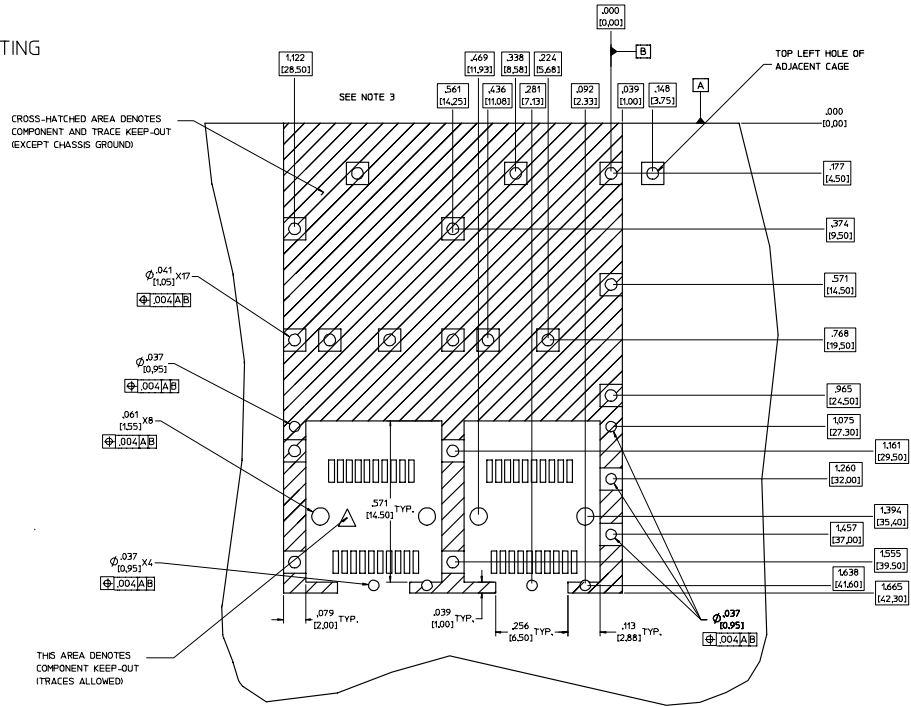
HOST CONNECTOR DETAIL



- NOTES:
- PADS AND VIAS GO TO CHASSIS GROUND. (34 PLACES).
RECOMMENDED PADS TO BE 2mm SQUARE.
 - PLATING OPTIONAL FOR THROUGH HOLES (8 PLACES)
 - RECOMMENDED PLATING INCLUDES HASL, IMMERSION (GOLD, SILVER, OR TIN), AND OSP.
 - HOLE PATTERN REPEATS FOR EACH PORT.
SPACING BETWEEN PORTS IS 0.561 [14.25]
 - CONNECTOR PAD LAYOUT PER SFP MSA. WILL ACCOMMODATE MOLEX
CONNECTOR SERIES 74441 OR EQUIVALENT.

ENTER DESCRIPTION EC NO. LIST 2004-0073 CHROMINSKON 2006/01/17 CHROBRUSSELL 2006/01/28 APPROVED FOR DESIGN	QUALITY SYMBOLS	GENERAL TOLERANCES (UNLESS SPECIFIED)	DIMENSION STYLE	SCALE	DESIGN UNITS	THIRD ANGLE PROJECTION	
	4 PLACES ± --- ± --- 3 PLACES ± --- ± 0.05 2 PLACES ± 0.13 ± 0.10 1 PLACE ± 0.25 ± --- ANGULAR ± 1 °	mm INCH	DRAWN BY KS MONSO 2003/09/25 CHECKED BY BRUSSELL 2003/10/27 APPROVED BY BRUSSELL 2003/10/27	DATE TITLE 1X2 SFP GANGED CAGE ASSEMBLY, PRESS FIT	6:1	METRIC	THIRD ANGLE PROJECTION
	DRAFT WHERE APPLICABLE MUST REMAIN WITHIN DIMENSIONS	MATERIAL NO. 747220001 SIZE D	MOLEX INCORPORATED DOCUMENT NO. SD-74722-001	SHEET NO. 2 OF 5	THIS DRAWING CONTAINS INFORMATION THAT IS PROPRIETARY TO MOLEX INCORPORATED AND SHOULD NOT BE USED WITHOUT WRITTEN PERMISSION		

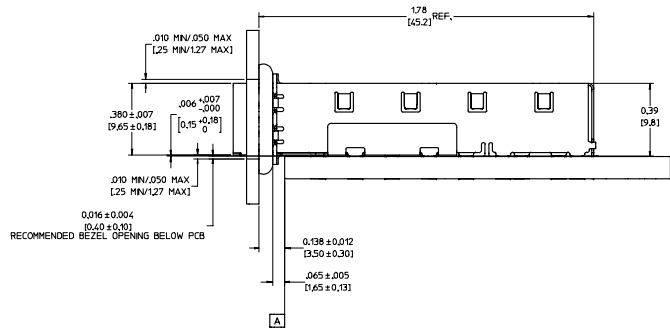
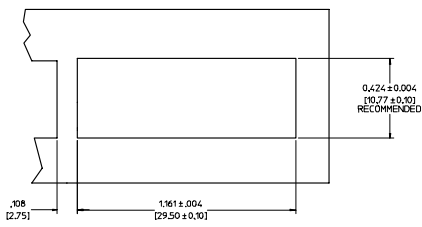
PCB LAYOUT FOR SINGLE SIDE MOUNTING



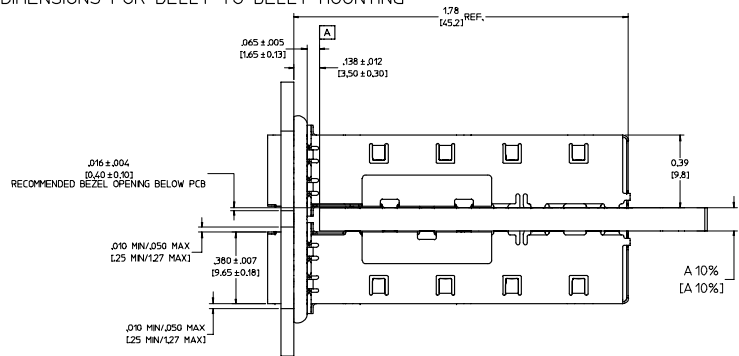
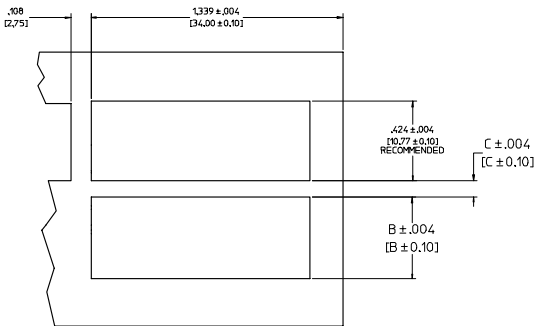
- NOTES:
1. PADS AND VIAS GO TO CHASSIS GROUND. (19 PLACES).
RECOMMENDED PADS TO BE 2mm SQUARE.
 2. PLATING OPTIONAL FOR THROUGH HOLES (6 PLACES)
 3. RECOMMENDED PLATING INCLUDES HASL, IMMERSION (GOLD, SILVER, OR TIN), AND OSP.
 4. HOLE PATTERN REPEATS FOR EACH PORT.
SPACING BETWEEN PORTS IS 0.561 [14.25]
 5. CONNECTOR PAD LAYOUT PER SFP HSA. WILL ACCOMMODATE MOLEX CONNECTOR SERIES 74441 OR EQUIVALENT.

ENTER DESCRIPTION EC NO. LIST 2004-0073 CHROBRUSSELL 2004/07/28 APPROVED DESCRIPTION	QUALITY SYMBOLS	GENERAL TOLERANCES (UNLESS SPECIFIED)	DIMENSION STYLE	SCALE	DESIGN UNITS	THIRD ANGLE PROJECTION
	▽=0	mm INCH	IN/MM	6:1	METRIC	☐
	▽=0	4 PLACES ± --- ± ---	DRAWN BY DATE	KS MONSO 2003/09/25	TITLE	1X2 SFP GANGED CAGE ASSEMBLY, PRESS FIT
	▽=0	3 PLACES ± --- ± .005	CHECKED BY DATE	BRUSSELL 2003/10/27	DRAWN BY DATE	APPROVED BY DATE
		1 PLACE ± 0.25 ± ---	APPROVED BY DATE	BRUSSELL 2003/10/27	DATE	DATE
		ANGULAR ± 1 °	APPROVED BY DATE	BRUSSELL 2003/10/27	DATE	DATE
		DRAFT WHERE APPLICABLE MUST REMAIN WITHIN DIMENSIONS	WATERMARK NO.	747220001	DRAWING NO.	SD-74722-001
			SIZE	D	THIS DRAWING CONTAINS INFORMATION THAT IS PROPRIETARY TO MOLEX INCORPORATED AND SHOULD NOT BE USED WITHOUT WRITTEN PERMISSION	

MOLEX INCORPORATED
SHEET NO. 3 OF 5



BEZEL AND BOARD POSITION DIMENSIONS FOR SINGLE SIDE MOUNTING



BEZEL AND BOARD POSITION DIMENSIONS FOR BELLY TO BELLY MOUNTING

NOTE: FOR A GIVEN BOARD THICKNESS (A), DIMENSIONS (B) AND (C) ARE DIRECTLY AFFECTED.

USE RECOMMENDED DIMENSIONS AND TOLERANCES TO AID IN DEVELOPING BEZEL OPENING.

FOR EXAMPLE USING A BOARD THICKNESS OF .125" THE RECOMMENDED VALUES WOULD BE:

- A= .125/3.18 ± 10%
- B= .434/11.03 ± .004
- C= .088/2.23 ± .004

ENTER DESCRIPTION EC NO. L572004-0073 CHROBRUSSELL 2006/01/28 APPROVED FOR RELEASE	QUALITY SYMBOLS	GENERAL TOLERANCES (UNLESS SPECIFIED)	DIMENSION STYLE	SCALE	DESIGN UNITS	THIRD ANGLE PROJECTION
		m/m INCH	IN/MM	4:1	METRIC	
	4 PLACES ± --- ± --- 3 PLACES ± --- ± .005 2 PLACES ± 0.13 ± .010 1 PLACE ± 0.25 ± --- ANGULAR ± 1 °	DRAWN BY: KS HONGSO CHECKED BY: BRUSSELL APPROVED BY: BRUSSELL DATE: 2003/09/25 DATE: 2003/10/27 DATE: 2003/10/27	MATERIAL NO.: 747220001 DOCUMENT NO.: SD-74722-001	TITLE: 1X2 SFP GANGED CAGE ASSEMBLY, PRESS FIT MOLEX INCORPORATED	SHEET NO.: 4 OF 5	
	DRAFT WHERE APPLICABLE MUST REMAIN WITHIN DIMENSIONS	THIS DRAWING CONTAINS INFORMATION THAT IS PROPRIETARY TO MOLEX INCORPORATED AND SHOULD NOT BE USED WITHOUT WRITTEN PERMISSION				

DATE	REV	CHANGES	COMMENTS
10/27/2003	A	INITIAL RELEASE	N/A
10/06/2005	B	ADDED PCB AND BEZEL LAYOUT	N/A

ENTER DESCRIPTION EC NO. U572004-0073 DRWNSHMONSON 2006/01/17 CHROBRUSSELL 2006/01/28 APPROVED DESCRIPTION REF	QUALITY SYMBOLS	GENERAL TOLERANCES (UNLESS SPECIFIED)	DIMENSION STYLE	SCALE	DESIGN UNITS	THIRD ANGLE PROJECTION																														
	$\nabla=0$ $\nabla=0$	<table border="1"> <tr> <th></th> <th>mm</th> <th>INCH</th> </tr> <tr> <td>4 PLACES</td> <td>$\pm .005$</td> <td>$\pm .0004$</td> </tr> <tr> <td>3 PLACES</td> <td>$\pm .010$</td> <td>$\pm .0008$</td> </tr> <tr> <td>2 PLACES</td> <td>± 0.13</td> <td>$\pm .010$</td> </tr> <tr> <td>1 PLACE</td> <td>± 0.25</td> <td>$\pm .010$</td> </tr> <tr> <td>ANGULAR</td> <td>$\pm 1^\circ$</td> <td></td> </tr> </table>		mm	INCH	4 PLACES	$\pm .005$	$\pm .0004$	3 PLACES	$\pm .010$	$\pm .0008$	2 PLACES	± 0.13	$\pm .010$	1 PLACE	± 0.25	$\pm .010$	ANGULAR	$\pm 1^\circ$		<table border="1"> <tr> <th>DRAWN BY</th> <th>DATE</th> </tr> <tr> <td>KS MONSO</td> <td>2003/09/25</td> </tr> <tr> <th>CHECKED BY</th> <th>DATE</th> </tr> <tr> <td>BRUSSELL</td> <td>2003/10/27</td> </tr> <tr> <th>APPROVED BY</th> <th>DATE</th> </tr> <tr> <td>BRUSSELL</td> <td>2003/10/27</td> </tr> </table>	DRAWN BY	DATE	KS MONSO	2003/09/25	CHECKED BY	DATE	BRUSSELL	2003/10/27	APPROVED BY	DATE	BRUSSELL	2003/10/27	1:1	METRIC	
		mm	INCH																																	
	4 PLACES	$\pm .005$	$\pm .0004$																																	
3 PLACES	$\pm .010$	$\pm .0008$																																		
2 PLACES	± 0.13	$\pm .010$																																		
1 PLACE	± 0.25	$\pm .010$																																		
ANGULAR	$\pm 1^\circ$																																			
DRAWN BY	DATE																																			
KS MONSO	2003/09/25																																			
CHECKED BY	DATE																																			
BRUSSELL	2003/10/27																																			
APPROVED BY	DATE																																			
BRUSSELL	2003/10/27																																			
DRAFT WHERE APPLICABLE MUST REMAIN WITHIN DIMENSIONS		MATERIAL NO. 747220001	DOCUMENT NO. SD-74722-001	MOLEX INCORPORATED		SHEET NO. 5 OF 5																														
THIS DRAWING CONTAINS INFORMATION THAT IS PROPRIETARY TO MOLEX INCORPORATED AND SHOULD NOT BE USED WITHOUT WRITTEN PERMISSION																																				