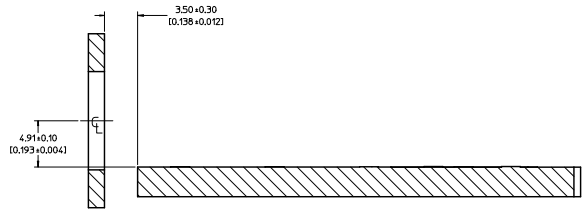
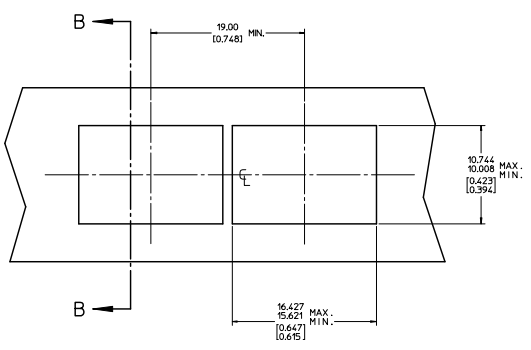
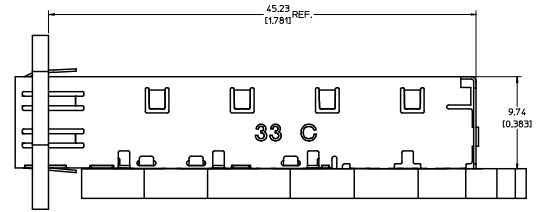






20 19 18 17 16 15 14 13 12 11 10 9 8 7 6 5 4 3 2 1

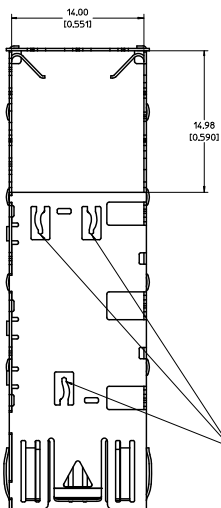


SECTION B-B

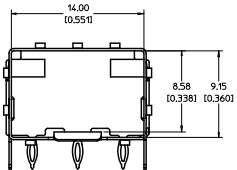
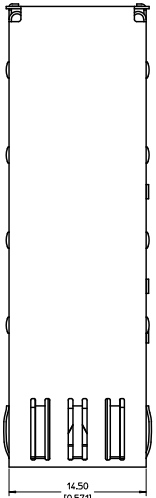
REV DIMS: CAGE REV REV DIMS: 2009-09-28 CHYKOKX/ANITA 2010/04/27 APPROVAL/ANITA 2010/05/04	QUALITY SYMBOLS	GENERAL TOLERANCES (UNLESS SPECIFIED)	DIMENSION STYLE	SCALE	DESIGN UNITS	THIRD ANGLE PROJECTION															
	▽=0 ▽=0	<table border="1"> <thead> <tr> <th></th> <th>mm</th> <th>INCH</th> </tr> </thead> <tbody> <tr> <td>4 PLACES ±---</td> <td>±---</td> <td>±---</td> </tr> <tr> <td>3 PLACES ±---</td> <td>±0.005</td> <td>±0.001</td> </tr> <tr> <td>2 PLACES ±0.15</td> <td>±0.01</td> <td>±0.004</td> </tr> <tr> <td>1 PLACE ±0.25</td> <td>±---</td> <td>±---</td> </tr> </tbody> </table>		mm	INCH	4 PLACES ±---	±---	±---	3 PLACES ±---	±0.005	±0.001	2 PLACES ±0.15	±0.01	±0.004	1 PLACE ±0.25	±---	±---	DRAWN BY: JRESENDE DATE: 2009/09/28 CHECKED BY: JRESENDE DATE: 2009/09/28 APPROVED BY: JRESENDE DATE: 2009/09/28	5:1	METRIC	SFP ONE PIECE CAGE PRESS-FIT (0.120 LEGS) W/ MODIFIED LATCH TANG
		mm	INCH																		
	4 PLACES ±---	±---	±---																		
3 PLACES ±---	±0.005	±0.001																			
2 PLACES ±0.15	±0.01	±0.004																			
1 PLACE ±0.25	±---	±---																			
DRAFT WHERE APPLICABLE MUST REMAIN WITHIN DIMENSIONS	MATERIAL NO. 747370033 DOCUMENT NO. SD-74737-0033	MOLEX INCORPORATED																			
						SHEET NO. 3 OF 3 THIS DRAWING CONTAINS INFORMATION THAT IS PROPRIETARY TO MOLEX INCORPORATED AND SHOULD NOT BE USED WITHOUT WRITTEN PERMISSION															

Is: Jrome, D.P. AM 1  
Rev. D 2004/06/28

19 18 17 16 15 14 13 12 11 10 9 8 7 6 5 4 3 2 1



EMI PINS REMAIN FLAT. NO THROUGH HOLES IN PCB NECESSARY.

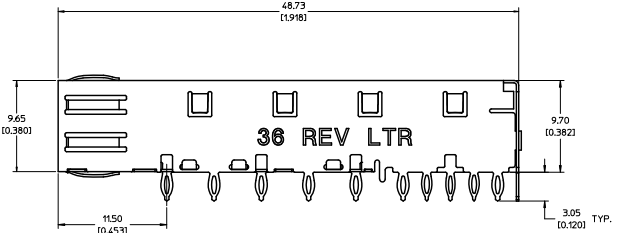
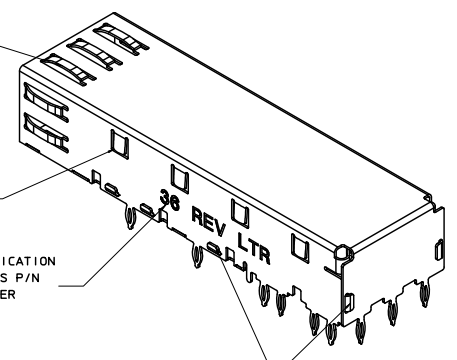


SPRING FINGER GASKET WITH TWO POINTS OF CONTACT. COMPLIES WITH (SFP) MSA BOARD AND BEZEL LOCATIONS.

TABS USED TO MOUNT LIGHT PIPE COVER

CAGE IDENTIFICATION LAST 2 DIGITS P/N AND REV LETTER (ex: 36 X)

ONE PIECE DESIGN SECURELY FASTENED



- NOTES:
- PRESS FIT LEGS, 0.120 INCHES LONG. 1.57 [0.062] MINIMUM PCB THICKNESS.
  - THIS CAGE IS FOR SINGLE SIDED USE ONLY.
  - CAN BE USED WITH THE FOLLOWING LIGHT PIPE PART NUMBERS:

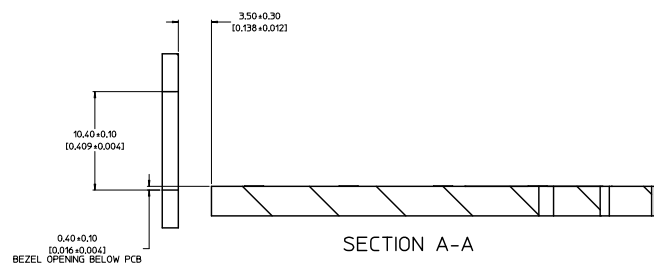
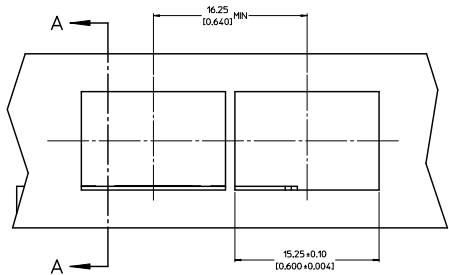
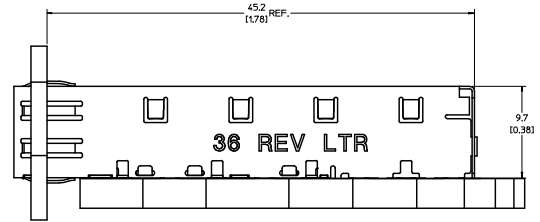
747260001 - LIGHT PIPE FROM BACK TO TOP (REFER TO DOCUMENT SD-74726-001)

747260002 - LIGHT PIPE FROM SIDE TO TOP (REFER TO DOCUMENT SD-74726-002)

- MATERIAL: COPPER ALLOY  
PLATING: PRE-PLATED WITH NICKEL
- THIS PART MEETS THE RESTRICTION OF HAZARDOUS SUBSTANCES IN ELECTRICAL AND ELECTRONIC EQUIPMENT (ROHS) DIRECTIVE (2002/95/EC).

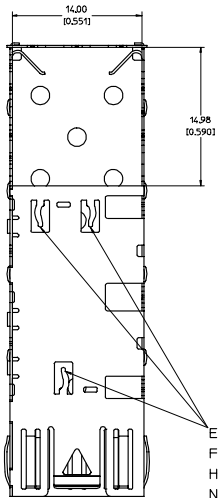
INITIAL RELEASE 2010/08/18 DRAWN BY JERWIN CHECKED BY A. JOHNSTON APPROVED BY J. JANOTA DATE 2010/08/18 2010/08/18 2010/08/26	QUALITY SYMBOLS	GENERAL TOLERANCES (UNLESS SPECIFIED)	DIMENSION STYLE	SCALE	DESIGN UNITS	THIRD ANGLE PROJECTION
	0 0	4 PLACES ± 0.13 ± 0.01 3 PLACES ± 0.25 ± 0.05 2 PLACES ± 0.13 ± 0.01 1 PLACE ± 0.25 ± 0.05 ANGULAR ± 1°	MM/IN 5:1	METRIC	M	THIRD ANGLE PROJECTION
	DRAFT WHERE APPLICABLE MUST REMAIN WITHIN DIMENSIONS	DRAWN BY JERWIN CHECKED BY A. JOHNSTON APPROVED BY J. JANOTA DATE 2010/08/18 2010/08/18 2010/08/26	MATERIAL NO. 747370036	DOCUMENT NO. SD-74737-0036	MOLEX INCORPORATED	SHEET NO. 1 OF 4
	THIS DRAWING CONTAINS INFORMATION THAT IS PROPRIETARY TO MOLEX INCORPORATED AND SHOULD NOT BE USED WITHOUT WRITTEN PERMISSION					



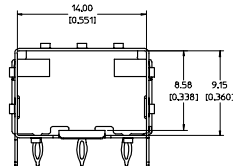
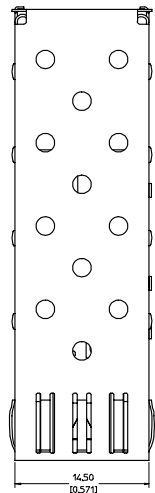


INITIAL RELEASE E.C. UNLESS SPECIFIED DRAWN BY: JERWIN 2010/08/18 CHECKED BY: AJOHNSTON 2010/08/18 APPROVED BY: KJANOTA 2010/08/26 REV DESCRIPTION	QUALITY SYMBOLS	GENERAL TOLERANCES (UNLESS SPECIFIED)	DIMENSION STYLE	SCALE	DESIGN UNITS	THIRD ANGLE PROJECTION
	▽=0 ▽=0.05	4 PLACES ± --- ± --- 3 PLACES ± --- ± 0.005 2 PLACES ± 0.13 ± 0.01 1 PLACE ± 0.25 ± --- ANGULAR ± 1 °	MM/IN	5:1	METRIC	
		DRAFT WHERE APPLICABLE MUST REMAIN WITHIN DIMENSIONS				
			MATERIAL NO. 747370036	DOCUMENT NO. SD-74737-0036	SHEET NO. 3 OF 4	
THIS DRAWING CONTAINS INFORMATION THAT IS PROPRIETARY TO MOLEX INCORPORATED AND SHOULD NOT BE USED WITHOUT WRITTEN PERMISSION						





EMI PINS REMAIN FLAT. NO THROUGH HOLES IN PCB NECESSARY.

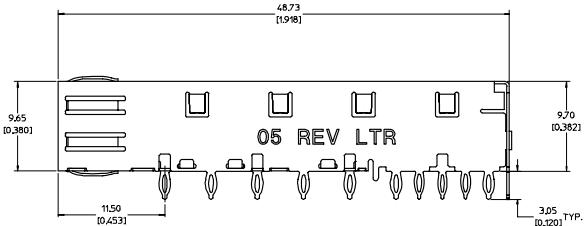
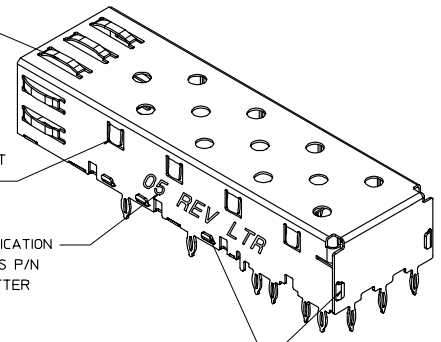


SPRING FINGER GASKET WITH TWO POINTS OF CONTACT. COMPLIES WITH (SFP) MSA BOARD AND BEZEL LOCATIONS.

TABS USED TO MOUNT LIGHT PIPE COVER

CAGE IDENTIFICATION LAST 2 DIGITS P/N AND REV LETTER (ex: 05 X)

ONE PIECE DESIGN SECURLY FASTENED



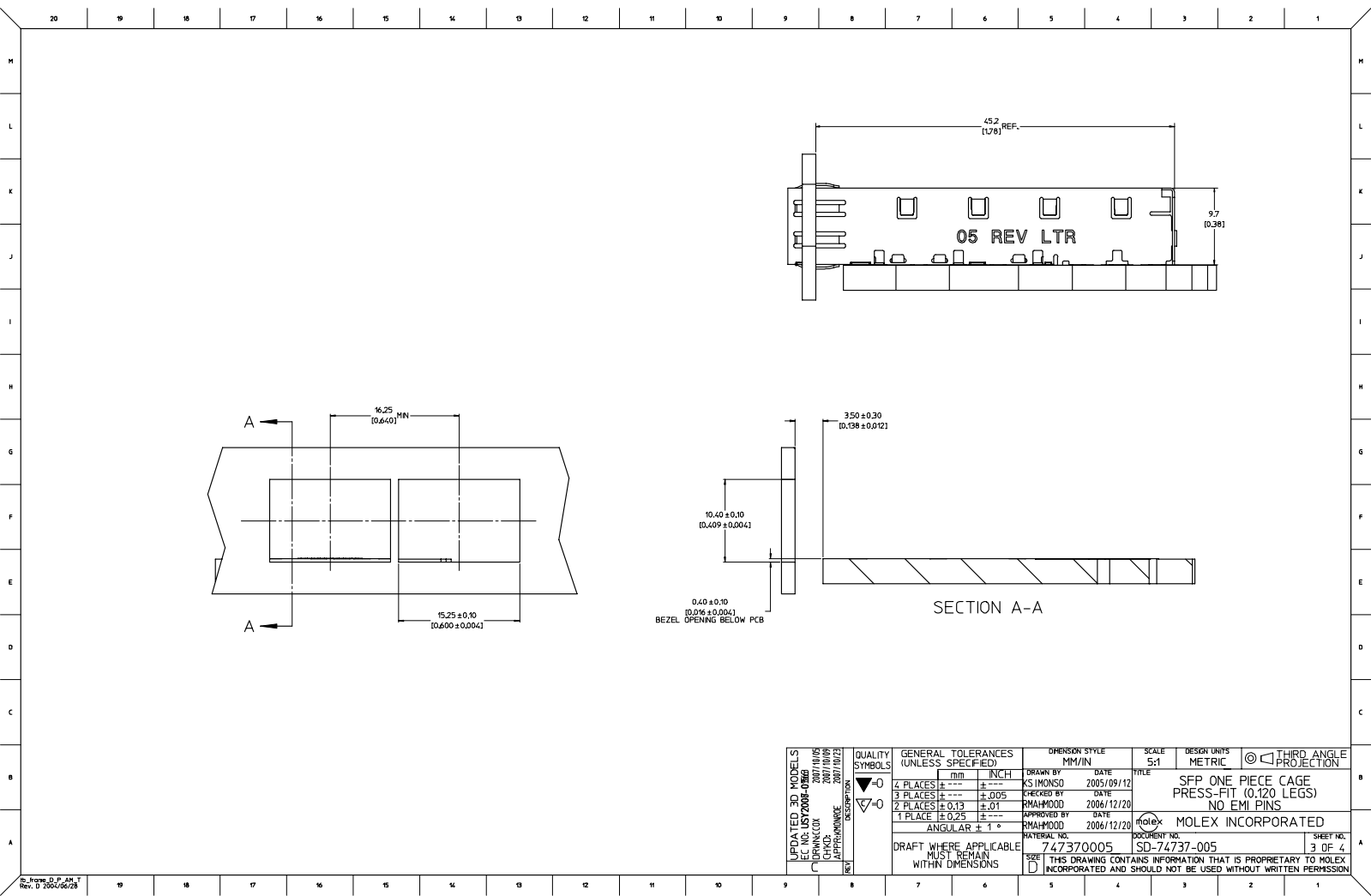
NOTES:

- PRESS FIT LEGS, 0.120 INCHES LONG. 157 (0.062) MINIMUM PCB THICKNESS.
- THIS CAGE IS FOR SINGLE SIDED USE ONLY.
- CAN BE USED WITH THE FOLLOWING LIGHT PIPE PART NUMBERS:  
747260001 - LIGHT PIPE FROM BACK TO TOP (REFER TO DOCUMENT SD-74726-001)  
747260002 - LIGHT PIPE FROM SIDE TO TOP (REFER TO DOCUMENT SD-74726-002)
- MATERIAL: COPPER ALLOY  
PLATING: PRE-PLATED WITH NICKEL
- THIS PART MEETS THE RESTRICTION OF HAZARDOUS SUBSTANCES IN ELECTRICAL AND ELECTRONIC EQUIPMENT (ROHS) DIRECTIVE (2002/95/EC).

UPDATED 3D MODEL IEC NO. LIST 2008-01868 DRAWN BY: CHROD CHECKED: JAPPHANNO APPROVED: JAPPHANNO DATE: 2007/10/09 DATE: 2007/10/09 DATE: 2007/10/09	QUALITY SYMBOLS	GENERAL TOLERANCES (UNLESS SPECIFIED)	DIMENSION STYLE	SCALE	DESIGN UNITS	THIRD ANGLE PROJECTION
	$\nabla=0$ $\nabla=0$	mm INCH 4 PLACES ± --- ± --- 3 PLACES ± --- ± .005 2 PLACES ± 0.13 ± .01 1 PLACE ± 0.25 ± --- ANGULAR ± 1 °	DRAWN BY: KS HONGSO CHECKED BY: RMAHMOOD APPROVED BY: RMAHMOOD DATE: 2005/09/12 DATE: 2006/12/20 DATE: 2006/12/20	5:1	METRIC	
	DRAFT WHERE APPLICABLE MUST REMAIN WITHIN DIMENSIONS	MATERIAL NO: 747370005 SIZE: D	DATE: 2006/12/20 DATE: 2006/12/20	TITLE: SFP ONE PIECE CAGE PRESS-FIT (0.120 LEGS) NO EMI PINS MOLEX INCORPORATED DOCUMENT NO: SD-74737-005 SHEET NO: 1 OF 4		
	THIS DRAWING CONTAINS INFORMATION THAT IS PROPRIETARY TO MOLEX INCORPORATED AND SHOULD NOT BE USED WITHOUT WRITTEN PERMISSION					







UPDATED 3D MODEL IEC NO. LIST 2008-01866 DRAWN BY: DRINKWATER CHECKED: CHANDLER APPROVED: [Signature] DATE: 2007/10/09 DATE: 2007/10/02	QUALITY SYMBOLS ∇=0 ∇=0	GENERAL TOLERANCES (UNLESS SPECIFIED) <table border="1"> <tr> <th></th> <th>mm</th> <th>INCH</th> </tr> <tr> <td>4 PLACES ±</td> <td>---</td> <td>---</td> </tr> <tr> <td>3 PLACES ±</td> <td>0.05</td> <td>±.005</td> </tr> <tr> <td>2 PLACES ±</td> <td>0.13</td> <td>±.01</td> </tr> <tr> <td>1 PLACE ±</td> <td>0.25</td> <td>±.01</td> </tr> <tr> <td>ANGULAR ±</td> <td colspan="2">1°</td> </tr> </table>		mm	INCH	4 PLACES ±	---	---	3 PLACES ±	0.05	±.005	2 PLACES ±	0.13	±.01	1 PLACE ±	0.25	±.01	ANGULAR ±	1°		DIMENSION STYLE MM/IN	SCALE 5:1	DESIGN UNITS METRIC	THIRD ANGLE PROJECTION
		mm	INCH																					
	4 PLACES ±	---	---																					
	3 PLACES ±	0.05	±.005																					
2 PLACES ±	0.13	±.01																						
1 PLACE ±	0.25	±.01																						
ANGULAR ±	1°																							
		DRAWN BY: KS MONSO CHECKED BY: RMAHMOOD APPROVED BY: RMAHMOOD	DATE: 2005/09/12 DATE: 2006/12/20 DATE: 2006/12/20	TITLE SFP ONE PIECE CAGE PRESS-FIT (0.120 LEGS) NO EMI PINS																				
		MATERIAL NO: 747370005	DOCUMENT NO: SD-74737-005	MOLEX INCORPORATED																				
		DRAFT WHERE APPLICABLE MUST REMAIN WITHIN DIMENSIONS	SIZE D	THIS DRAWING CONTAINS INFORMATION THAT IS PROPRIETARY TO MOLEX INCORPORATED AND SHOULD NOT BE USED WITHOUT WRITTEN PERMISSION																				

