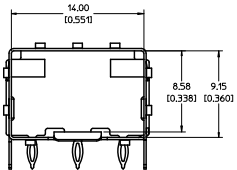
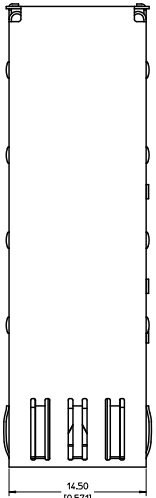


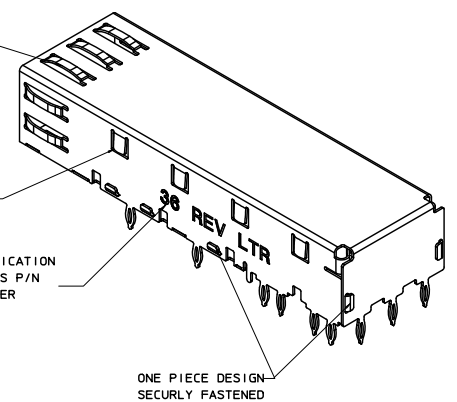
EMI PINS REMAIN FLAT. NO THROUGH HOLES IN PCB NECESSARY.



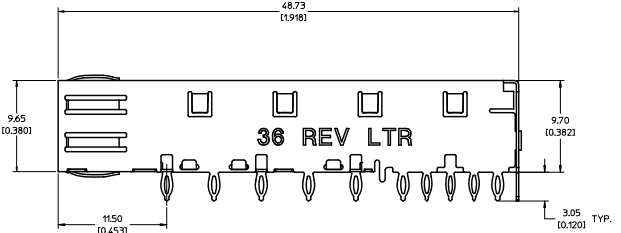
SPRING FINGER GASKET WITH TWO POINTS OF CONTACT. COMPLIES WITH (SFP) MSA BOARD AND BEZEL LOCATIONS.

TABS USED TO MOUNT LIGHT PIPE COVER

CAGE IDENTIFICATION LAST 2 DIGITS P/N AND REV LETTER (ex: 36 X)



ONE PIECE DESIGN SECURELY FASTENED



- NOTES:
- PRESS FIT LEGS, 0.120 INCHES LONG. 1.57 [0.062] MINIMUM PCB THICKNESS.
  - THIS CAGE IS FOR SINGLE SIDED USE ONLY.
  - CAN BE USED WITH THE FOLLOWING LIGHT PIPE PART NUMBERS:

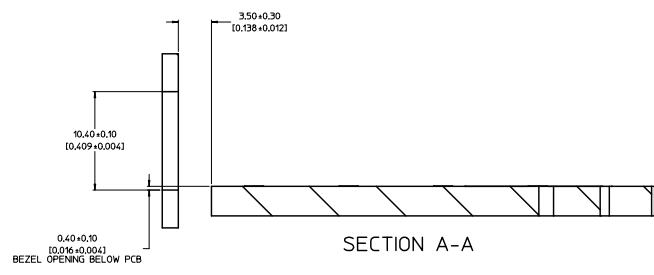
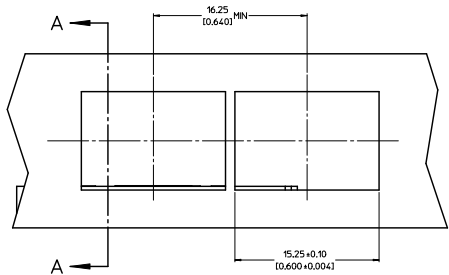
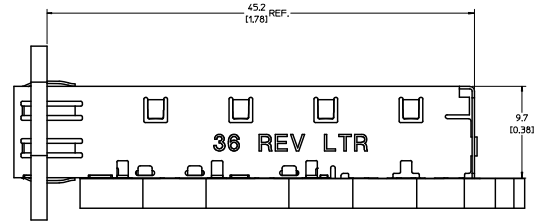
747260001 - LIGHT PIPE FROM BACK TO TOP (REFER TO DOCUMENT SD-74726-001)

747260002 - LIGHT PIPE FROM SIDE TO TOP (REFER TO DOCUMENT SD-74726-002)

- MATERIAL: COPPER ALLOY  
PLATING: PRE-PLATED WITH NICKEL
- THIS PART MEETS THE RESTRICTION OF HAZARDOUS SUBSTANCES IN ELECTRICAL AND ELECTRONIC EQUIPMENT (ROHS) DIRECTIVE (2002/95/EC).

INITIAL RELEASE DATE: 2010/08/18 DRAWN BY: JERWIN CHECKED BY: A. JOHNSTON APPROVED BY: J. JANOTA DATE: 2010/08/24	QUALITY SYMBOLS	GENERAL TOLERANCES (UNLESS SPECIFIED)	DIMENSION STYLE	SCALE	DESIGN UNITS	THIRD ANGLE PROJECTION														
	$\nabla=0$ $\nabla=0$	<table border="1"> <thead> <tr> <th></th> <th>mm</th> <th>INCH</th> </tr> </thead> <tbody> <tr> <td>4 PLACES ±</td> <td>± 0.13</td> <td>± 0.005</td> </tr> <tr> <td>3 PLACES ±</td> <td>± 0.13</td> <td>± 0.01</td> </tr> <tr> <td>2 PLACES ±</td> <td>± 0.25</td> <td>± 0.01</td> </tr> <tr> <td>1 PLACE ±</td> <td>± 0.25</td> <td>± 0.01</td> </tr> </tbody> </table>		mm	INCH	4 PLACES ±	± 0.13	± 0.005	3 PLACES ±	± 0.13	± 0.01	2 PLACES ±	± 0.25	± 0.01	1 PLACE ±	± 0.25	± 0.01	MM/IN 5:1	METRIC	
		mm	INCH																	
	4 PLACES ±	± 0.13	± 0.005																	
3 PLACES ±	± 0.13	± 0.01																		
2 PLACES ±	± 0.25	± 0.01																		
1 PLACE ±	± 0.25	± 0.01																		
DRAFT WHERE APPLICABLE MUST REMAIN WITHIN DIMENSIONS	DRAWN BY: JERWIN DATE: 2010/08/18 CHECKED BY: A. JOHNSTON DATE: 2010/08/18 APPROVED BY: J. JANOTA DATE: 2010/08/24	MATERIAL NO.: 747370036 DOCUMENT NO.: SD-74737-0036	TITLE: SFP ONE PIECE CAGE PRESS-FIT (0.120 LEGS) NO EMI PINS MOLEX INCORPORATED	SHEET NO. 1 OF 4																

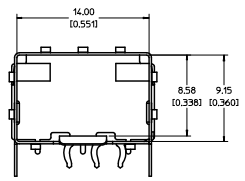
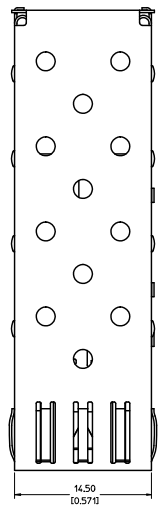
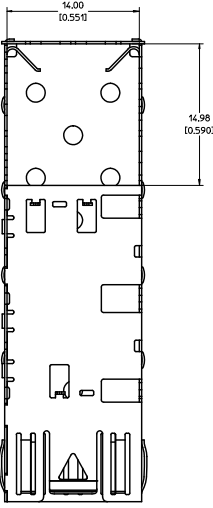




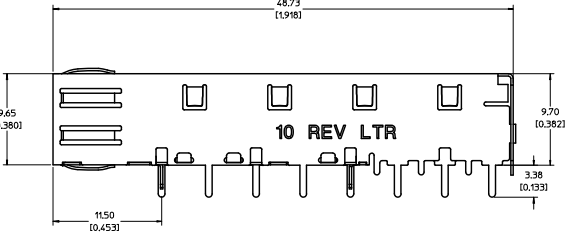
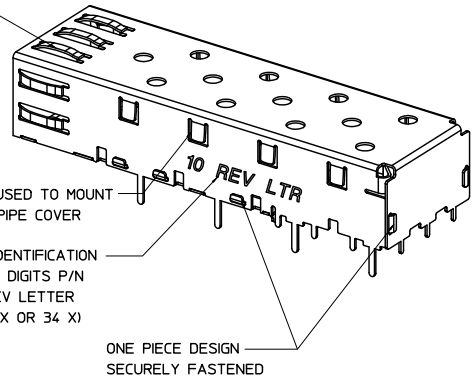
INITIAL RELEASE E.C. UNLESS SPECIFIED DRAWN BY: JERWIN 2010/08/18 CHECKED BY: AJOHNSTON 2010/08/18 APPROVED BY: KJANOTA 2010/08/26 DESCRIPTION: SFP ONE PIECE CAGE REV:	QUALITY SYMBOLS	GENERAL TOLERANCES (UNLESS SPECIFIED)	DIMENSION STYLE	SCALE	DESIGN UNITS	THIRD ANGLE PROJECTION
	▽=0 ▽=0.05	4 PLACES ± --- ± --- 3 PLACES ± --- ± 0.005 2 PLACES ± 0.13 ± 0.01 1 PLACE ± 0.25 ± --- ANGULAR ± 1 °	MM/IN 5:1	METRIC		
	DRAWN BY: JERWIN 2010/08/18	CHECKED BY: AJOHNSTON 2010/08/18	APPROVED BY: KJANOTA 2010/08/26	TITLE: SFP ONE PIECE CAGE PRESS-FIT (0.120 LEGS) NO EMI PINS		
	MATERIAL NO. 747370036 DOCUMENT NO. SD-74737-0036			MOLEX INCORPORATED		
DRAFT WHERE APPLICABLE MUST REMAIN WITHIN DIMENSIONS						SHEET NO. 3 OF 4
THIS DRAWING CONTAINS INFORMATION THAT IS PROPRIETARY TO MOLEX INCORPORATED AND SHOULD NOT BE USED WITHOUT WRITTEN PERMISSION						



20 19 18 17 16 15 14 13 12 11 10 9 8 7 6 5 4 3 2 1



SPRING FINGER GASKET WITH TWO POINTS OF CONTACT. COMPLIES WITH (SFP) MSA BOARD AND BEZEL LOCATIONS.



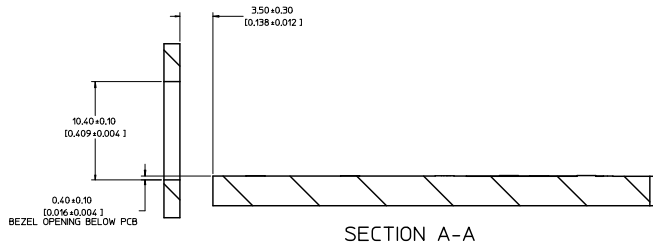
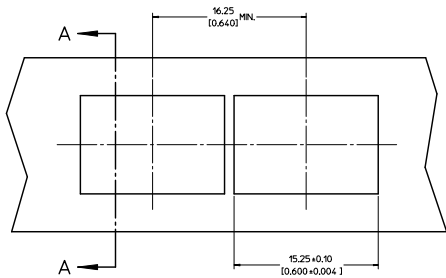
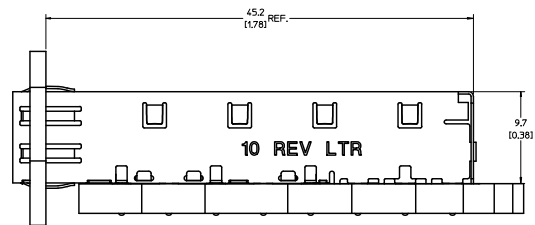
MOLEX PN	PLATING
747370010	PRE-PLATED WITH NICKEL
747370034	POST PLATED WITH MATTE TIN

- NOTES:
- THIS CAGE IS FOR SINGLE SIDED USE ONLY.
  - CAN BE USED WITH THE FOLLOWING LIGHT PIPE PART NUMBERS:
    - 747260001 - LIGHT PIPE FROM BACK TO TOP (REFER TO DOCUMENT SD-74726-001)
    - 747260002 - LIGHT PIPE FROM SIDE TO TOP (REFER TO DOCUMENT SD-74726-002)
  - MATERIAL: COPPER ALLOY
  - THIS PART MEETS THE RESTRICTION OF HAZARDOUS SUBSTANCES IN ELECTRICAL AND ELECTRONIC EQUIPMENT (ROHS) DIRECTIVE (2002/95/EC).

QUALITY SYMBOLS	GENERAL TOLERANCES (UNLESS SPECIFIED)	DIMENSION STYLE		SCALE	DESIGN UNITS	THIRD ANGLE PROJECTION
		MM/IN	DATE			
ADDITIONAL ACTION ELC CUSTOMER SERVICE CHIKO/RAHMOOD 2010/01/18 APPREX./JANOTA 2010/03/31	4 PLACES ± 0.05	± 0.05	CCOX	2007/01/22	SFP ONE PIECE CAGE W/SPRING FINGERS SOLDER POSTS MOLEX INCORPORATED	SHEET NO. 1 OF 4
	3 PLACES ± 0.13	± 0.01	RAHMOOD	2007/01/22		
	2 PLACES ± 0.25	± 0.01	APPROVED BY	DATE		
	1 PLACE ± 0.25	± 0.01	KJANOTA	2010/03/31		
	ANGULAR ± 1°					
	DRAFT WHERE APPLICABLE MUST REMAIN WITHIN DIMENSIONS		SEE CHART		SD-74737-010	
			THIS DRAWING CONTAINS INFORMATION THAT IS PROPRIETARY TO MOLEX INCORPORATED AND SHOULD NOT BE USED WITHOUT WRITTEN PERMISSION			

19 18 17 16 15 14 13 12 11 10 9 8 7 6 5 4 3 2 1





ADDED TIN OPTION ENHANCED BEZEL DRAWN BY: CCOX CHECKED BY: RMAHM000 APPROVED BY: K.JANOTA DATE: 2010/01/18 DATE: 2007/01/22 DATE: 2010/03/31	QUALITY SYMBOLS ◻=0 ◻=0	GENERAL TOLERANCES (UNLESS SPECIFIED) 4 PLACES ± --- ± --- 3 PLACES ± --- ± 0.05 2 PLACES ± 0.15 ± 0.1 1 PLACE ± 0.25 ± --- ANGULAR ± 1 °	DIMENSION STYLE MM/IN DRAWN BY: CCOX CHECKED BY: RMAHM000 APPROVED BY: K.JANOTA DATE: 2007/01/22 DATE: 2007/01/22 DATE: 2010/03/31	SCALE: 5:1 DESIGN UNITS: METRIC THIRD ANGLE PROJECTION	TITLE: SFP ONE PIECE CAGE W/SPRING FINGERS SOLDER POSTS MOLEX INCORPORATED MATERIAL NO. SEE CHART DOCUMENT NO. SD-74737-010	SHEET NO. 3 OF 4
	DRAFT WHERE APPLICABLE MUST REMAIN WITHIN DIMENSIONS					
	THIS DRAWING CONTAINS INFORMATION THAT IS PROPRIETARY TO MOLEX INCORPORATED AND SHOULD NOT BE USED WITHOUT WRITTEN PERMISSION					
	MOLEX INCORPORATED					

20 19 18 17 16 15 14 13 12 11 10 9 8 7 6 5 4 3 2 1

DATE	REV	CHANGES
2007/01/17	A	INITIAL RELEASE
2007/01/24	B	[1] ON SHT1 ADDED TEXT TO ISO VIEW & SIDE VIEW, [2] ON SHT3 DELETED BEZ FRONT VIEW
2007/04/25	C	[1] ADDED REV SHEET, [2] UPDATED REV SHEET NOTES A-B, [3] UPDATED DRAWING TO REFLECT CHG'S MADE TO EM-74737-010-ASSY REV C, [4] ON SHT1 ROTATED BTM VIEW 180 DEGREES.
2010/03/18	D	[1] ADDED PLATING CHART ON SHT1 WITH TIN AND NICKEL OPTION, [2] REMOVED PLATING CALLOUT FROM NOTE 3, [3] CHANGED MATERIAL NO. TO 'SEE CHART'

ADDED TIN OPTION FC CUSTOMER REQUEST CHIKORAHMOOD 2010/03/18 CHIKORAHMOOD 2010/01/21 APPROVALS: J.MONTA 2010/03/21	QUALITY SYMBOLS	GENERAL TOLERANCES (UNLESS SPECIFIED)	DIMENSION STYLE	SCALE	DESIGN UNITS	THIRD ANGLE PROJECTION																					
	$\nabla=0$ $\nabla=0$	<table border="1"> <tr> <th></th> <th>MM</th> <th>INCH</th> </tr> <tr> <td>4 PLACES ±---</td> <td>±---</td> <td>±---</td> </tr> <tr> <td>3 PLACES ±---</td> <td>±.005</td> <td></td> </tr> <tr> <td>2 PLACES ±0.13</td> <td>±.01</td> <td></td> </tr> <tr> <td>1 PLACE ±0.25</td> <td>±---</td> <td></td> </tr> </table>		MM	INCH	4 PLACES ±---	±---	±---	3 PLACES ±---	±.005		2 PLACES ±0.13	±.01		1 PLACE ±0.25	±---		<table border="1"> <tr> <th>MM/IN</th> <th>DATE</th> <th>TITLE</th> </tr> <tr> <td>MM/IN</td> <td>2007/01/22</td> <td>SFP ONE PIECE CAGE W/SPRING FINGERS SOLDER POSTS</td> </tr> </table>	MM/IN	DATE	TITLE	MM/IN	2007/01/22	SFP ONE PIECE CAGE W/SPRING FINGERS SOLDER POSTS	1:1	METRIC	
		MM	INCH																								
	4 PLACES ±---	±---	±---																								
3 PLACES ±---	±.005																										
2 PLACES ±0.13	±.01																										
1 PLACE ±0.25	±---																										
MM/IN	DATE	TITLE																									
MM/IN	2007/01/22	SFP ONE PIECE CAGE W/SPRING FINGERS SOLDER POSTS																									
<table border="1"> <tr> <th>DRAWN BY</th> <th>DATE</th> <th>CHECKED BY</th> <th>DATE</th> <th>APPROVED BY</th> <th>DATE</th> </tr> <tr> <td>CCOX</td> <td>2007/01/22</td> <td>RAHM000</td> <td>2007/01/22</td> <td>K.IANOTA</td> <td>2010/03/31</td> </tr> </table>	DRAWN BY	DATE	CHECKED BY	DATE	APPROVED BY	DATE	CCOX	2007/01/22	RAHM000	2007/01/22	K.IANOTA	2010/03/31	<table border="1"> <tr> <th>MATERIAL NO.</th> <th>DOCUMENT NO.</th> <th>SHEET NO.</th> </tr> <tr> <td>SEE CHART</td> <td>SD-74737-010</td> <td>4 OF 4</td> </tr> </table>	MATERIAL NO.	DOCUMENT NO.	SHEET NO.	SEE CHART	SD-74737-010	4 OF 4								
DRAWN BY	DATE	CHECKED BY	DATE	APPROVED BY	DATE																						
CCOX	2007/01/22	RAHM000	2007/01/22	K.IANOTA	2010/03/31																						
MATERIAL NO.	DOCUMENT NO.	SHEET NO.																									
SEE CHART	SD-74737-010	4 OF 4																									
DRAFT WHERE APPLICABLE MUST REMAIN WITHIN DIMENSIONS						THIS DRAWING CONTAINS INFORMATION THAT IS PROPRIETARY TO MOLEX INCORPORATED AND SHOULD NOT BE USED WITHOUT WRITTEN PERMISSION																					

19 18 17 16 15 14 13 12 11 10 9 8 7 6 5 4 3 2 1