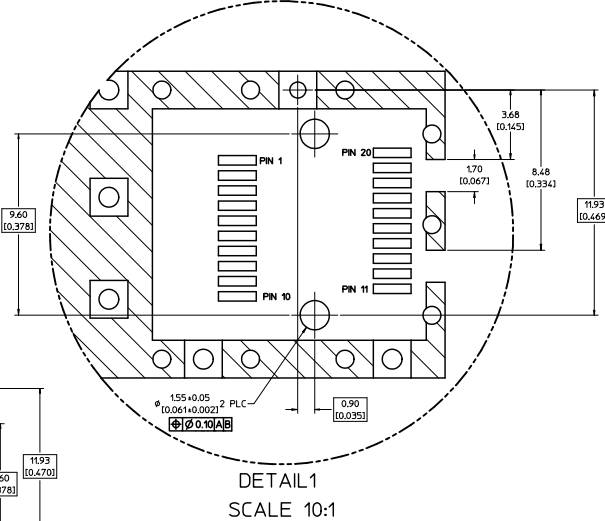
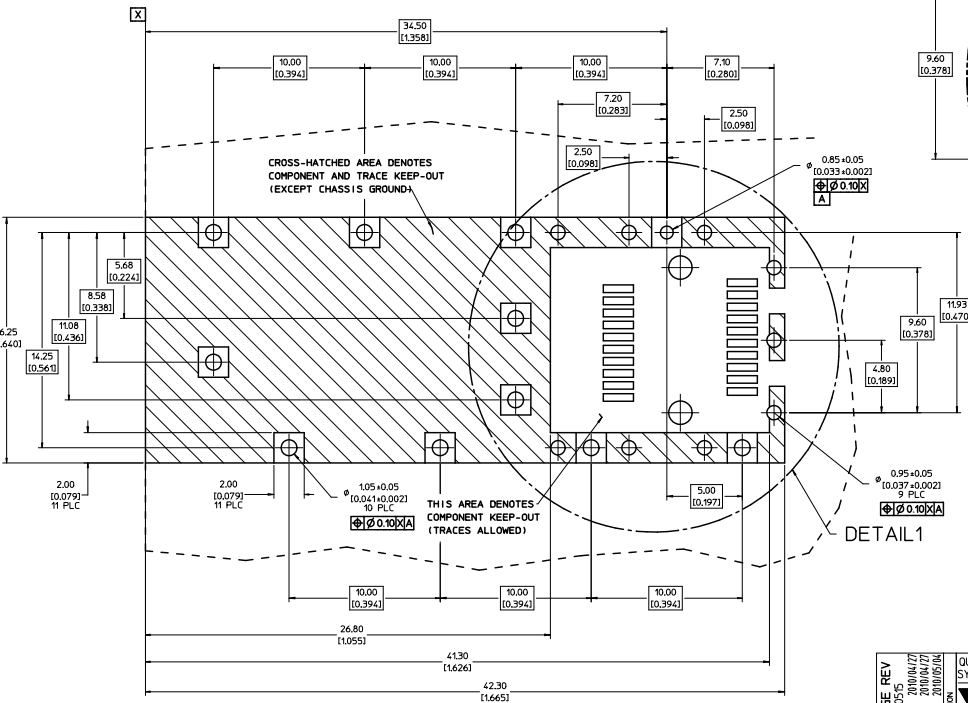


- NOTES:
- PRESS FIT LEGS, 0.120 INCHES LONG.  
1.57 [0.062] MINIMUM PCB THICKNESS.
  - THIS CAGE IS FOR SINGLE SIDED USE ONLY.
  - CAN BE USED WITH THE FOLLOWING LIGHT PIPE PART NUMBERS:  
747260001 - LIGHT PIPE FROM BACK TO TOP  
(REFER TO DOCUMENT SD-74726-001)  
747260002 - LIGHT PIPE FROM SIDE TO TOP  
(REFER TO DOCUMENT SD-74726-002)
  - MATERIAL: COPPER ALLOY  
PLATING: PRE-PLATED WITH NICKEL
  - THIS PART MEETS THE RESTRICTION OF HAZARDOUS SUBSTANCES IN ELECTRICAL AND ELECTRONIC EQUIPMENT (ROHS) DIRECTIVE (2002/95/EC).

REV DWS: CAGE REV E: MSL: 200-055 C: DRAWN: JRESENDE 2009/09/28 CHK: KX: JAMNIA APPR: JAMNIA	QUALITY SYMBOLS	GENERAL TOLERANCES (UNLESS SPECIFIED)	DIMENSION STYLE	SCALE	DESIGN UNITS	THIRD ANGLE PROJECTION
	$\nabla=0$ $\nabla=0.005$	(UNLESS SPECIFIED) 4 PLACES ± 0.13 ± 0.01 3 PLACES ± 0.25 ± 0.01 2 PLACES ± 0.13 ± 0.01 1 PLACE ± 0.25 ± 0.01 ANGULAR ± 1°	MM/IN DATE DRAWN BY: JRESENDE 2009/09/28 CHECKED BY: DATE JRESENDE 2009/09/28 APPROVED BY: DATE JRESENDE 2009/09/28	5:1	METRIC	<input checked="" type="checkbox"/> THIRD ANGLE PROJECTION
	TITLE: SFP ONE PIECE CAGE PRESS-FIT (0.120 LEGS) W/ MODIFIED LATCH TANG					
	MATERIAL NO. 747370033 DOCUMENT NO. SD-74737-0033 DRAFT WHERE APPLICABLE MUST REMAIN WITHIN DIMENSIONS THIS DRAWING CONTAINS INFORMATION THAT IS PROPRIETARY TO MOLEX INCORPORATED AND SHOULD NOT BE USED WITHOUT WRITTEN PERMISSION					

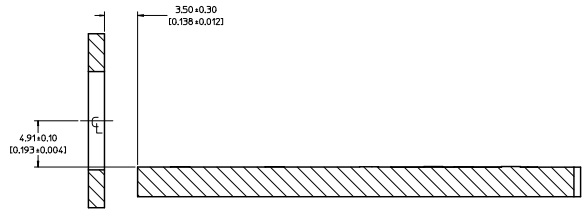
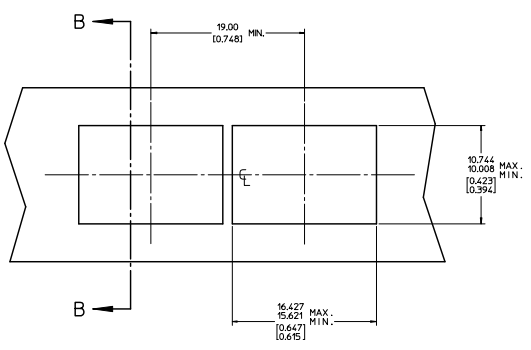
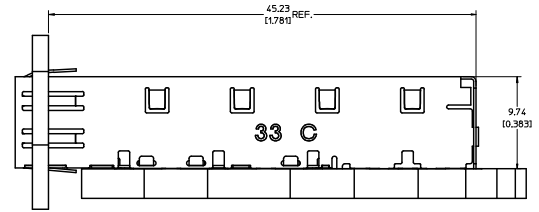
SHEET NO.  
1 OF 3

1. PADS AND VIAS ARE CHASSIS GROUND.
2. HOLE LAYOUT SHOWN IS FOR SINGLE SIDED MOUNTING ONLY.
3. CONNECTOR PAD LAYOUT PER SFP MSA. WILL ACCOMMODATE MOLEX CONNECTOR SERIES 74441 OR EQUIVALENT.



<b>REV</b> QMS-CAGE REV. NO. 010-0005 CHANGES CHYCKA JANITA 2010/04/27 APPROX. LIMITS 2010/05/01	QUALITY SYMBOLS	GENERAL TOLERANCES (UNLESS SPECIFIED)	DIMENSION STYLE	SCALE	DESIGN UNITS	THIRD ANGLE PROJECTION
	$\nabla$ 0 $\nabla$ 0.13	4 PLACES ± 0.13 ± 0.01 3 PLACES ± 0.25 ± 0.01 2 PLACES ± 0.25 ± 0.01 1 PLACE ± 0.25 ± 0.01 ANGULAR ± 1°	MM/IN	8:1	METRIC	
	DRAWN BY JRESENDE CHECKED BY DATE APPROVED BY JRESENDE DATE	DATE 2009/09/28 DATE 2009/09/28 DATE 2009/09/28				SFP ONE PIECE CAGE PRESS-FIT (0.120 LEGS) W/ MODIFIED LATCH TANG
	DRAFT WHERE APPLICABLE MUST REMAIN WITHIN DIMENSIONS	MATERIAL NO. 747370033 DOCUMENT NO. SD-74737-0033	MOLEX INCORPORATED	SHEET NO. 2 OF 3		

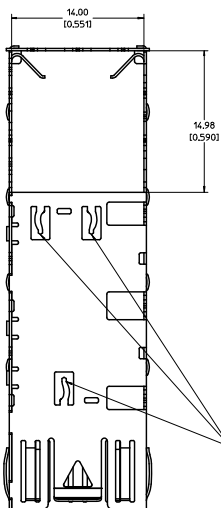
20 19 18 17 16 15 14 13 12 11 10 9 8 7 6 5 4 3 2 1



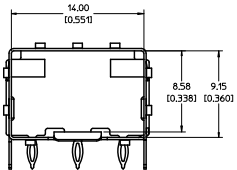
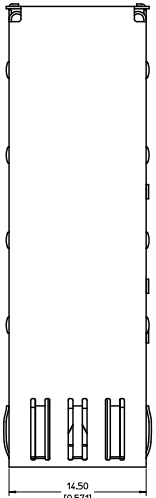
SECTION B-B

REV DIMS: CAGE REV REV NO: 2009-09-28 DRAWN BY: JRESENDE CHECKED BY: JRESENDE APPROVED BY: JRESENDE DATE: 2009/09/28	QUALITY SYMBOLS	GENERAL TOLERANCES (UNLESS SPECIFIED)	DIMENSION STYLE	SCALE	DESIGN UNITS	THIRD ANGLE PROJECTION															
	◻ 0 ◻ 0	<table border="1"> <thead> <tr> <th></th> <th>mm</th> <th>INCH</th> </tr> </thead> <tbody> <tr> <td>4 PLACES ± ---</td> <td>± ---</td> <td>± ---</td> </tr> <tr> <td>3 PLACES ± ---</td> <td>± 0.005</td> <td>± 0.001</td> </tr> <tr> <td>2 PLACES ± 0.13</td> <td>± 0.01</td> <td>± 0.005</td> </tr> <tr> <td>1 PLACE ± 0.25</td> <td>± ---</td> <td>± ---</td> </tr> </tbody> </table>		mm	INCH	4 PLACES ± ---	± ---	± ---	3 PLACES ± ---	± 0.005	± 0.001	2 PLACES ± 0.13	± 0.01	± 0.005	1 PLACE ± 0.25	± ---	± ---	MM/IN 5:1 METRIC	DRAWN BY: JRESENDE CHECKED BY: JRESENDE APPROVED BY: JRESENDE DATE: 2009/09/28	TITLE: SFP ONE PIECE CAGE PRESS-FIT (0.120 LEGS) W/ MODIFIED LATCH TANG	MOLEX INCORPORATED
		mm	INCH																		
	4 PLACES ± ---	± ---	± ---																		
3 PLACES ± ---	± 0.005	± 0.001																			
2 PLACES ± 0.13	± 0.01	± 0.005																			
1 PLACE ± 0.25	± ---	± ---																			
DRAFT WHERE APPLICABLE MUST REMAIN WITHIN DIMENSIONS	MATERIAL NO. 747370033	DOCUMENT NO. SD-74737-0033	SHEET NO. 3 OF 3																		
THIS DRAWING CONTAINS INFORMATION THAT IS PROPRIETARY TO MOLEX INCORPORATED AND SHOULD NOT BE USED WITHOUT WRITTEN PERMISSION																					

19 18 17 16 15 14 13 12 11 10 9 8 7 6 5 4 3 2 1



EMI PINS REMAIN FLAT. NO THROUGH HOLES IN PCB NECESSARY.

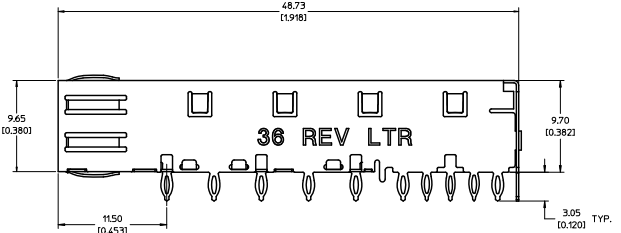
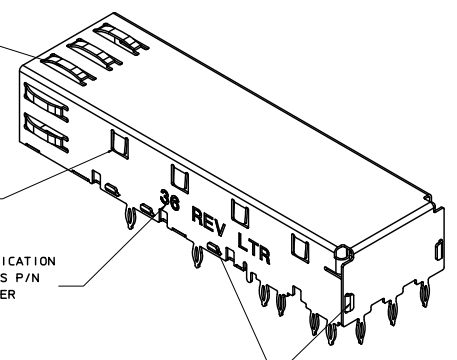


SPRING FINGER GASKET WITH TWO POINTS OF CONTACT. COMPLIES WITH (SFP) MSA BOARD AND BEZEL LOCATIONS.

TABS USED TO MOUNT LIGHT PIPE COVER

CAGE IDENTIFICATION LAST 2 DIGITS P/N AND REV LETTER (ex: 36 X)

ONE PIECE DESIGN SECURELY FASTENED



- NOTES:
- PRESS FIT LEGS, 0.120 INCHES LONG. 1.57 [0.062] MINIMUM PCB THICKNESS.
  - THIS CAGE IS FOR SINGLE SIDED USE ONLY.
  - CAN BE USED WITH THE FOLLOWING LIGHT PIPE PART NUMBERS:

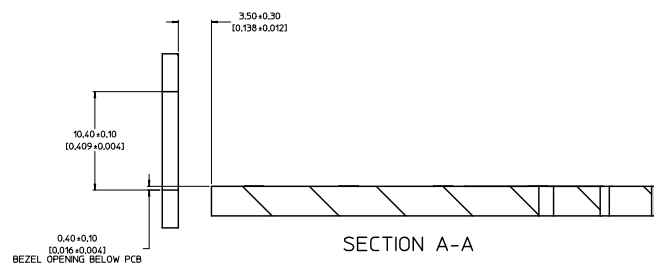
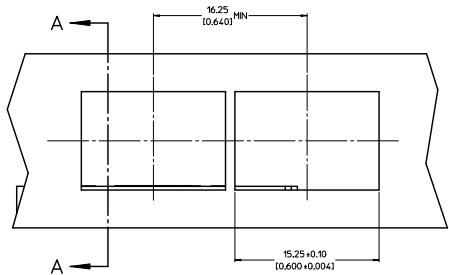
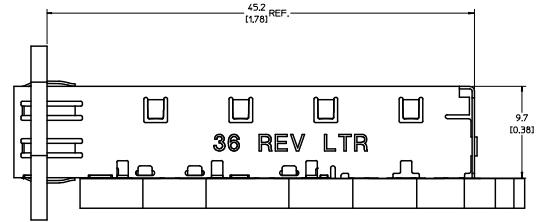
747260001 - LIGHT PIPE FROM BACK TO TOP (REFER TO DOCUMENT SD-74726-001)

747260002 - LIGHT PIPE FROM SIDE TO TOP (REFER TO DOCUMENT SD-74726-002)

- MATERIAL: COPPER ALLOY  
PLATING: PRE-PLATED WITH NICKEL
- THIS PART MEETS THE RESTRICTION OF HAZARDOUS SUBSTANCES IN ELECTRICAL AND ELECTRONIC EQUIPMENT (ROHS) DIRECTIVE (2002/95/EC).

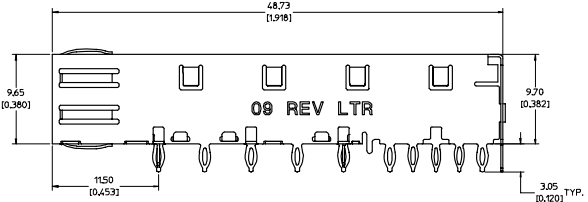
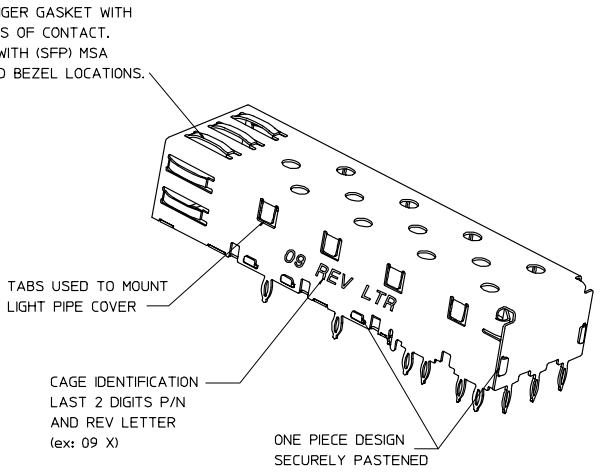
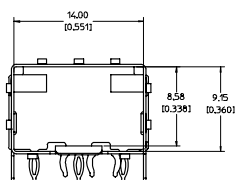
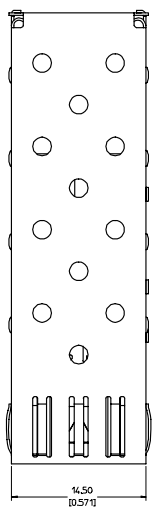
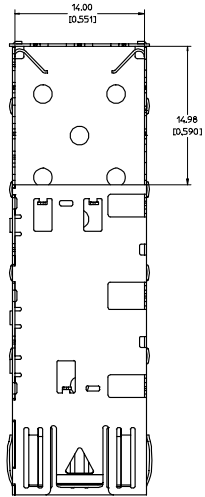
INITIAL RELEASE DATE: 2010/08/18 DRAWN BY: JERWIN CHECKED BY: A. JOHNSTON APPROVED BY: J. JANOTA DATE: 2010/08/24	QUALITY SYMBOLS	GENERAL TOLERANCES (UNLESS SPECIFIED)	DIMENSION STYLE	SCALE	DESIGN UNITS	THIRD ANGLE PROJECTION														
	$\nabla=0$ $\nabla=0$	<table border="1"> <thead> <tr> <th></th> <th>MM</th> <th>INCH</th> </tr> </thead> <tbody> <tr> <td>4 PLACES ±</td> <td>± 0.10</td> <td>± 0.004</td> </tr> <tr> <td>3 PLACES ±</td> <td>± 0.05</td> <td>± 0.002</td> </tr> <tr> <td>2 PLACES ±</td> <td>± 0.13</td> <td>± 0.01</td> </tr> <tr> <td>1 PLACE ±</td> <td>± 0.25</td> <td>± 0.01</td> </tr> </tbody> </table>		MM	INCH	4 PLACES ±	± 0.10	± 0.004	3 PLACES ±	± 0.05	± 0.002	2 PLACES ±	± 0.13	± 0.01	1 PLACE ±	± 0.25	± 0.01	MM/IN 5:1	METRIC	
		MM	INCH																	
	4 PLACES ±	± 0.10	± 0.004																	
3 PLACES ±	± 0.05	± 0.002																		
2 PLACES ±	± 0.13	± 0.01																		
1 PLACE ±	± 0.25	± 0.01																		
DRAFT WHERE APPLICABLE MUST REMAIN WITHIN DIMENSIONS	DRAWN BY: JERWIN DATE: 2010/08/18 CHECKED BY: A. JOHNSTON DATE: 2010/08/18 APPROVED BY: J. JANOTA DATE: 2010/08/24	MATERIAL NO.: 747370036 DOCUMENT NO.: SD-74737-0036	TITLE: SFP ONE PIECE CAGE PRESS-FIT (0.120 LEGS) NO EMI PINS MOLEX INCORPORATED	SHEET NO.: 1 OF 4																
INITIAL RELEASE DATE: 2010/08/18 DRAWN BY: JERWIN CHECKED BY: A. JOHNSTON APPROVED BY: J. JANOTA DATE: 2010/08/24	THIS DRAWING CONTAINS INFORMATION THAT IS PROPRIETARY TO MOLEX INCORPORATED AND SHOULD NOT BE USED WITHOUT WRITTEN PERMISSION																			





INITIAL RELEASE E.C. UNLESS SPECIFIED DRAWN BY: JERWIN 2010/08/18 CHECKED BY: AJOHNSTON 2010/08/18 APPROVED BY: KJANOTA 2010/08/26 REV DESCRIPTION	QUALITY SYMBOLS	GENERAL TOLERANCES (UNLESS SPECIFIED)	DIMENSION STYLE	SCALE	DESIGN UNITS	THIRD ANGLE PROJECTION
	▽=0 ▽=0.05	4 PLACES ± --- ± --- 3 PLACES ± --- ± 0.005 2 PLACES ± 0.13 ± 0.01 1 PLACE ± 0.25 ± --- ANGULAR ± 1 °	MM/IN	5:1	METRIC	
		DRAFT WHERE APPLICABLE MUST REMAIN WITHIN DIMENSIONS				DRAWN BY: JERWIN DATE: 2010/08/18 CHECKED BY: AJOHNSTON DATE: 2010/08/18 APPROVED BY: KJANOTA DATE: 2010/08/26
						TITLE: SFP ONE PIECE CAGE PRESS-FIT (0.120 LEGS) NO EMI PINS MOLEX INCORPORATED MATERIAL NO. 747370036 DOCUMENT NO. SD-74737-0036 SHEET NO. 3 OF 4





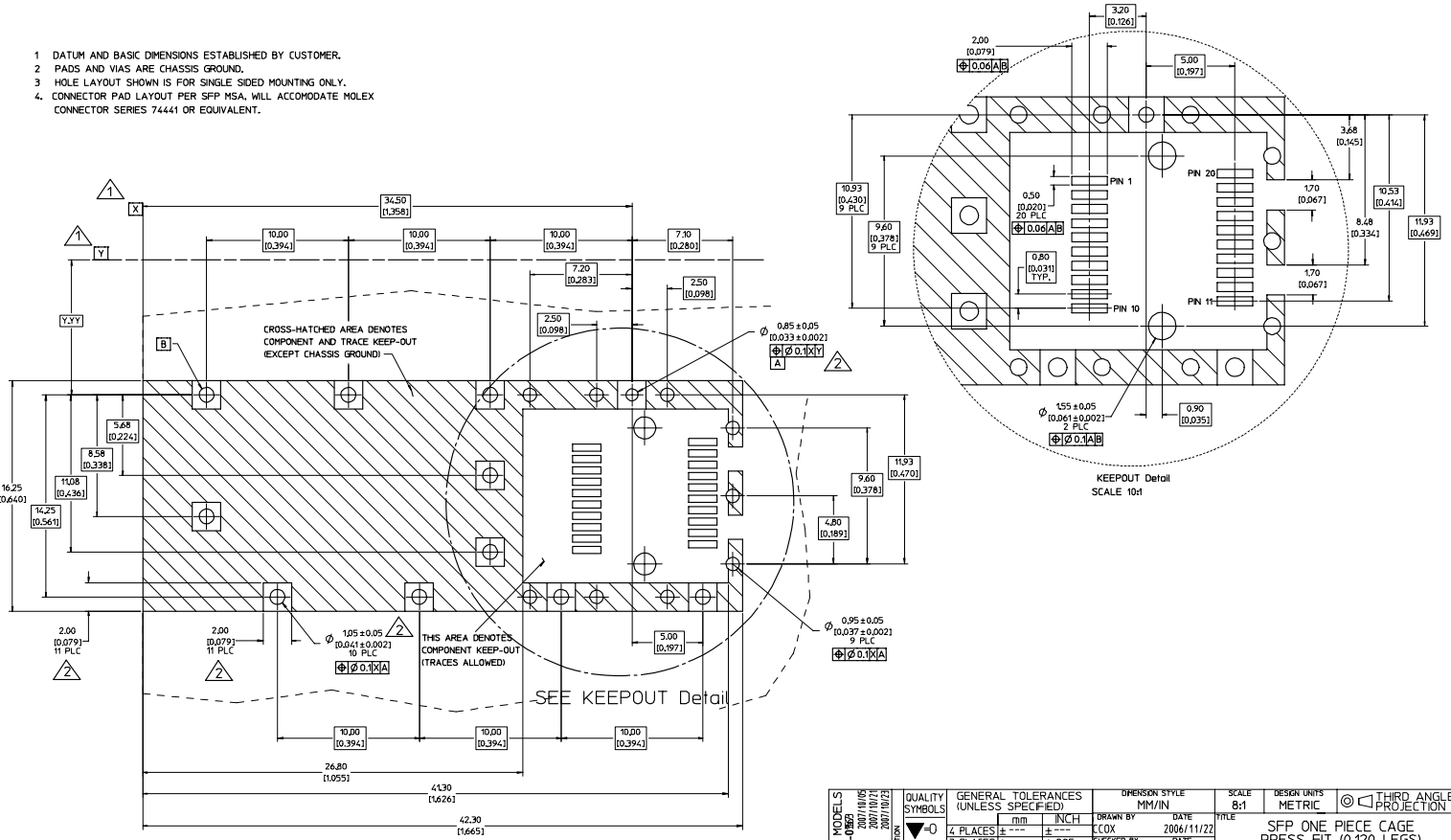
NOTES:

- PRESS FIT LEGS, 0.120 INCHES LONG. 157 (0.062) MINIMUM PCB THICKNESS.
- THIS CAGE IS FOR SINGLE SIDED USE ONLY.
- CAN BE USED WITH THE FOLLOWING LIGHT PIPE PART NUMBERS:  
 747260001 - LIGHT PIPE FROM BACK TO TOP (REFER TO DOCUMENT SD-74726-001)  
 747260002 - LIGHT PIPE FROM SIDE TO TOP (REFER TO DOCUMENT SD-74726-002)
- MATERIAL: COPPER ALLOY  
 PLATING: PRE-PLATED WITH NICKEL
- THIS PART MEETS THE RESTRICTION OF HAZARDOUS SUBSTANCES IN ELECTRICAL AND ELECTRONIC EQUIPMENT (ROHS) DIRECTIVE (2002/95/EC).

UPDATED 3D MODEL IEC NO. LIST 2008-0862 DRAWN BY: DRANKCOX 2007/10/21 CHECKED BY: RAHMOOD 2007/10/21 APPROVED BY: RAHMOOD 2007/10/21 DESCRIPTION: SFP ONE PIECE CAGE	QUALITY SYMBOLS	GENERAL TOLERANCES (UNLESS SPECIFIED)	DIMENSION STYLE	SCALE	DESIGN UNITS	THIRD ANGLE PROJECTION	
	$\nabla=0$ $\nabla=0$	mm INCH 4 PLACES ± --- ± --- 3 PLACES ± --- ± 0.05 2 PLACES ± 0.13 ± 0.1 1 PLACE ± 0.25 ± --- ANGULAR ± 1°	DRAWN BY: C COX DATE: 2006/11/22 CHECKED BY: RAHMOOD DATE: 2006/11/22 APPROVED BY: DATE:	MM/IN	5:1	METRIC	
	DRAFT WHERE APPLICABLE MUST REMAIN WITHIN DIMENSIONS	MATERIAL NO: 747370009 SIZE: D	TITLE: SFP ONE PIECE CAGE PRESS-FIT (0.120 LEGS) MOLEX INCORPORATED				
			DOCUMENT NO: SD-74737-009 SHEET NO: 1 OF 4				

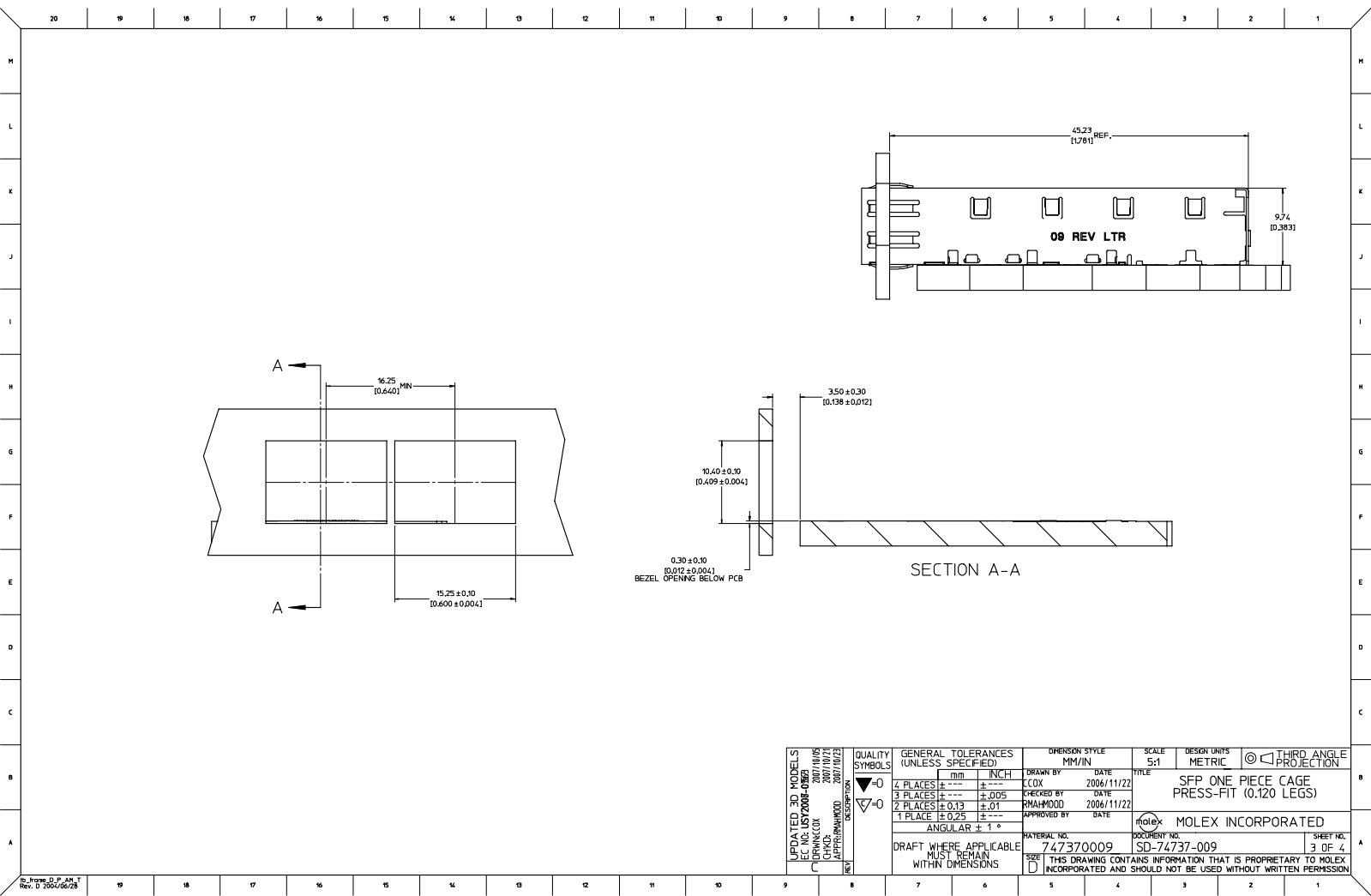


- 1 DATUM AND BASIC DIMENSIONS ESTABLISHED BY CUSTOMER.
- 2 PADS AND VIAS ARE CHASSIS GROUND.
- 3 HOLE LAYOUT SHOWN IS FOR SINGLE SIDED MOUNTING ONLY.
- 4 CONNECTOR PAD LAYOUT PER SFP MSA, WILL ACCOMMODATE MOLEX CONNECTOR SERIES 74441 OR EQUIVALENT.



QUALITY SYMBOLS ▽=0 ▽=0	GENERAL TOLERANCES (UNLESS SPECIFIED) mm INCH 4 PLACES ± --- ± --- 3 PLACES ± --- ± 0.05 2 PLACES ± 0.13 ± 0.1 1 PLACE ± 0.25 ± --- ANGULAR ± 1°	DIMENSION STYLE MM/IN	SCALE 8:1	DESIGN UNITS METRIC	THIRD ANGLE PROJECTION
	DRAFT WHERE APPLICABLE MUST REMAIN WITHIN DIMENSIONS	DRAWN BY CCOX	DATE 2006/11/22	TITLE SFP ONE PIECE CAGE PRESS-FIT (0.120 LEGS)	
		CHECKED BY RMAHMOOD	DATE 2006/11/22	MOLEX INCORPORATED	
		MATERIAL NO. 747370009	DOCUMENT NO. SD-74737-009	SHEET NO. 2 OF 4	

Rev. 1, 2006/06/28



UPDATED 3D MODEL IEC NO. LIST 2008-0862 DRAWN BY: C COX CHECKED BY: R MAHMOOD APPROVED BY: [Signature] DATE: 2007/10/05 DATE: 2007/10/21 DATE: 2007/10/21	QUALITY SYMBOLS ▽=0 ▽=0	GENERAL TOLERANCES (UNLESS SPECIFIED) <table border="1"> <tr> <th></th> <th>mm</th> <th>INCH</th> </tr> <tr> <td>4 PLACES</td> <td>± 0.10</td> <td>± 0.004</td> </tr> <tr> <td>3 PLACES</td> <td>± 0.13</td> <td>± 0.005</td> </tr> <tr> <td>2 PLACES</td> <td>± 0.25</td> <td>± 0.01</td> </tr> <tr> <td>1 PLACE</td> <td>± 0.25</td> <td>± 0.01</td> </tr> </table>		mm	INCH	4 PLACES	± 0.10	± 0.004	3 PLACES	± 0.13	± 0.005	2 PLACES	± 0.25	± 0.01	1 PLACE	± 0.25	± 0.01	DIMENSION STYLE MM/IN DRAWN BY: C COX CHECKED BY: R MAHMOOD APPROVED BY: [Signature] DATE: 2006/11/22 DATE: 2006/11/22 DATE:	SCALE 5:1 DESIGN UNITS METRIC THIRD ANGLE PROJECTION	TITLE SFP ONE PIECE CAGE PRESS-FIT (0.120 LEGS)
		mm	INCH																	
	4 PLACES	± 0.10	± 0.004																	
	3 PLACES	± 0.13	± 0.005																	
2 PLACES	± 0.25	± 0.01																		
1 PLACE	± 0.25	± 0.01																		
DRAFT WHERE APPLICABLE MUST REMAIN WITHIN DIMENSIONS		MATERIAL NO. 747370009	MOLEX INCORPORATED	SHEET NO. 3 OF 4																
THIS DRAWING CONTAINS INFORMATION THAT IS PROPRIETARY TO MOLEX INCORPORATED AND SHOULD NOT BE USED WITHOUT WRITTEN PERMISSION																				
MOLEX INCORPORATED																				

20 19 18 17 16 15 14 13 12 11 10 9 8 7 6 5 4 3 2 1

DATE	REV	CHANGES
2006/11/30	A	INITIAL RELEASE
2007/01/23	B	[1] CHANGED MODULE EJECT FEATURE TOL FROM +/- 1DEG TO +/-5DEG; [2] CHANGED EJECT ARM ANGLE TOL FROM +/-1DEG TO 50DEG MIN; [3] CHANGED EMI SPRING FINGER OVERLAP FROM 0.21MM TO 0.01MM MIN; [4] ADDED DIM TO LEGS: OVERALL LENGTH, LENGTH FROM TIP TO SLOT, AND SLOT LENGTH.; [5] DELETED COMMENTS SECTION FROM REV CHART.; [6] ADDED 'REF' TO DIM K2 ON SHEET 2.
2007/04/25	C	[1] ADDED REV SHEET; [2] UPDATED REV NOTES A-B; [3] UPDATD DRAWING TO REFLECT CHG'S MADE TO EM-74737-009-ASSY REV C; [4] ON SHT1 ROTATED BTM_VIEW 180 DEGREES.

UPDATED 3D MODELS EC NO. LIST 2008-0863 2007/10/05 DRAWN BY C COX 2007/10/21 CHECKED JAHMED RAHMOOD 2007/10/21 APPROVED BY JAHMED RAHMOOD 2007/10/21 DESCRIPTION REF	QUALITY SYMBOLS 	GENERAL TOLERANCES (UNLESS SPECIFIED) <table border="1"> <thead> <tr> <th></th> <th>mm</th> <th>INCH</th> </tr> </thead> <tbody> <tr> <td>4 PLACES</td> <td>±.005</td> <td>±.0004</td> </tr> <tr> <td>3 PLACES</td> <td>±.005</td> <td>±.0005</td> </tr> <tr> <td>2 PLACES</td> <td>±0.13</td> <td>±.01</td> </tr> <tr> <td>1 PLACE</td> <td>±0.25</td> <td>±.01</td> </tr> <tr> <td colspan="3">ANGULAR ± 1°</td> </tr> </tbody> </table>		mm	INCH	4 PLACES	±.005	±.0004	3 PLACES	±.005	±.0005	2 PLACES	±0.13	±.01	1 PLACE	±0.25	±.01	ANGULAR ± 1°			DIMENSION STYLE MM/IN DRAWN BY DATE C COX 2006/11/22 CHECKED BY DATE RAHMOOD 2006/11/22 APPROVED BY DATE	SCALE 1:1 DESIGN UNITS METRIC THIRD ANGLE PROJECTION 	TITLE SFP ONE PIECE CAGE PRESS-FIT (0.120 LEGS)
		mm	INCH																				
	4 PLACES	±.005	±.0004																				
	3 PLACES	±.005	±.0005																				
2 PLACES	±0.13	±.01																					
1 PLACE	±0.25	±.01																					
ANGULAR ± 1°																							
DRAFT WHERE APPLICABLE MUST REMAIN WITHIN DIMENSIONS		MATERIAL NO. 747370009 SIZE D	MOLEX INCORPORATED DOCUMENT NO. SD-74737-009 SHEET NO. 4 OF 4	THIS DRAWING CONTAINS INFORMATION THAT IS PROPRIETARY TO MOLEX INCORPORATED AND SHOULD NOT BE USED WITHOUT WRITTEN PERMISSION																			

20 19 18 17 16 15 14 13 12 11 10 9 8 7 6 5 4 3 2 1