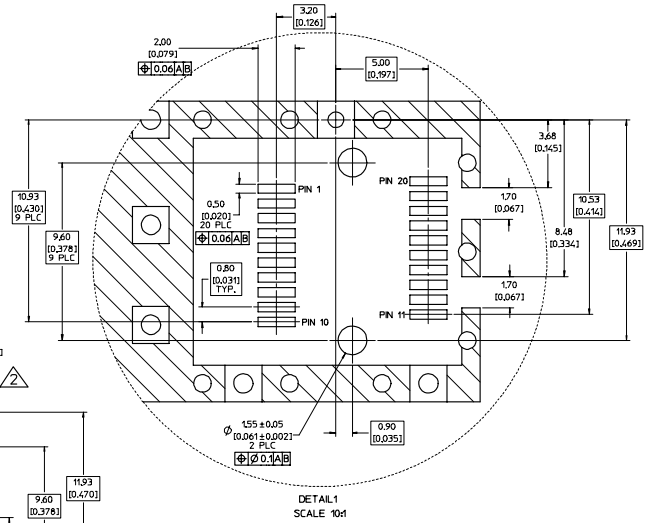
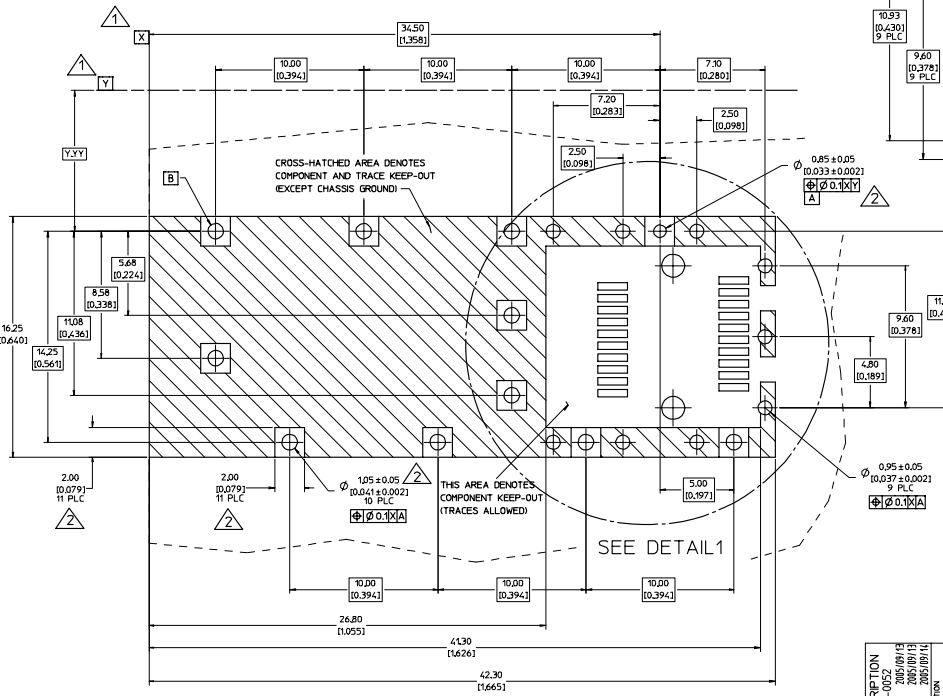


**NOTES:**

1. PRESS FIT LEGS, 0.120 INCHES LONG.  
1.57 (0.062) MINIMUM PCB THICKNESS.
2. THIS CAGE IS FOR SINGLE SIDED USE ONLY.
3. CAN BE USED WITH THE FOLLOWING LIGHT PIPE PART NUMBERS:  
  
747260001 - LIGHT PIPE FROM BACK TO TOP  
(REFER TO DOCUMENT SD-74726-001)  
  
747260002 - LIGHT PIPE FROM SIDE TO TOP  
(REFER TO DOCUMENT SD-74726-002)
4. MATERIAL: COPPER ALLOY  
PLATING: PRE-PLATED WITH NICKEL
5. THIS PART MEETS THE RESTRICTION OF HAZARDOUS SUBSTANCES IN  
ELECTRICAL AND ELECTRONIC EQUIPMENT (ROHS) DIRECTIVE (2002/95/EC).

ENTER DESCRIPTION IEC NO. LIST 2004-0052 DRINKS/MONSON 2005/09/13 CHROBRUSSELL 2005/09/11 APPROVED FOR RELEASE APPROVED FOR RELEASE	QUALITY SYMBOLS	GENERAL TOLERANCES (UNLESS SPECIFIED)	DIMENSION STYLE	SCALE	DESIGN UNITS	THIRD ANGLE PROJECTION
	$\nabla=0$ $\nabla=0$	mm INCH 4 PLACES ± --- ± --- 3 PLACES ± --- ± 0.005 2 PLACES ± 0.13 ± 0.01 1 PLACE ± 0.25 ± --- ANGULAR ± 1 °	DRAWN BY DATE KS MONSO 2005/09/12 CHECKED BY DATE BRUSSELL 2005/09/12 APPROVED BY DATE BRUSSELL 2005/09/12	5:1	METRIC	
	DRAFT WHERE APPLICABLE MUST REMAIN WITHIN DIMENSIONS	MATERIAL NO. 747370016	TITLE SFP ONE PIECE CAGE PRESS-FIT (0.120 LEGS) FOR PCI	MOLEX INCORPORATED DOCUMENT NO. SD-74737-0016	SHEET NO. 1 OF 3	
	THIS DRAWING CONTAINS INFORMATION THAT IS PROPRIETARY TO MOLEX INCORPORATED AND SHOULD NOT BE USED WITHOUT WRITTEN PERMISSION					

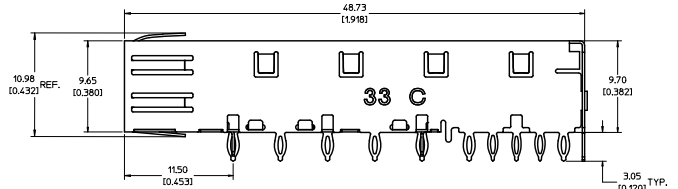
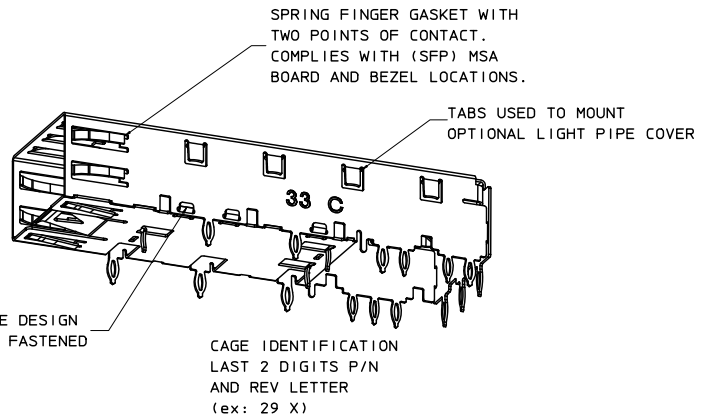
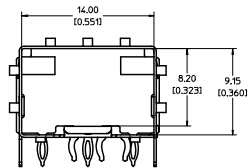
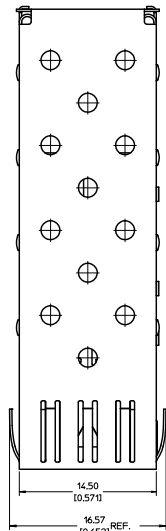
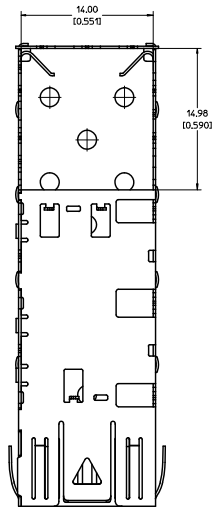
- DATUM AND BASIC DIMENSIONS ESTABLISHED BY CUSTOMER.
- PADS AND VIAS ARE CHASSIS GROUND.
- HOLE LAYOUT SHOWN IS FOR SINGLE SIDED MOUNTING ONLY.
- CONNECTOR PAD LAYOUT PER SFP MSA, WILL ACCOMMODATE MOLEX CONNECTOR SERIES 74441 OR EQUIVALENT.



DETAIL 1  
SCALE: 10x1

ENTER DESCRIPTION IEC NO. LIST 7004-0052 CHROMIUM/NICKEL 2005/09/12 APPROVED FOR RELEASE APPROVED FOR RELEASE	QUALITY SYMBOLS	GENERAL TOLERANCES (UNLESS SPECIFIED)	DIMENSION STYLE	SCALE	DESIGN UNITS	THIRD ANGLE PROJECTION
	$\nabla=0$ $\nabla=0.1$	mm INCH 4 PLACES ± --- ± --- 3 PLACES ± --- ± 0.05 2 PLACES ± 0.13 ± 0.1 1 PLACE ± 0.25 ± --- ANGULAR ± 1 °	DRAWN BY DATE KS MONSO 2005/09/12 CHECKED BY DATE BRUSSELL 2005/09/12 APPROVED BY DATE BRUSSELL 2005/09/12	MM/IN 8:1	METRIC	TITLE SFP ONE PIECE CAGE PRESS-FIT (0.120 LEGS) FOR PCI
	DRAFT WHERE APPLICABLE MUST REMAIN WITHIN DIMENSIONS	MATERIAL NO. 747370016	DOCUMENT NO. SD-74737-0016	MOLEX INCORPORATED	SHEET NO. 2 OF 3	THIS DRAWING CONTAINS INFORMATION THAT IS PROPRIETARY TO MOLEX INCORPORATED AND SHOULD NOT BE USED WITHOUT WRITTEN PERMISSION



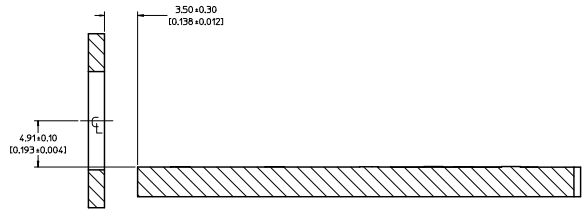
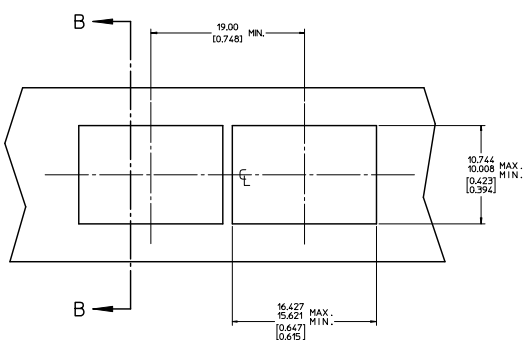
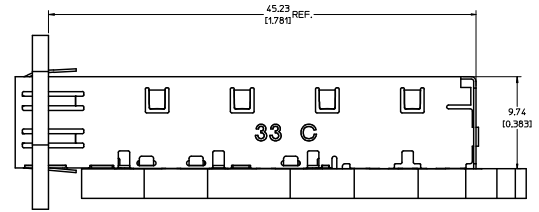


- NOTES:
- PRESS FIT LEGS, 0.120 INCHES LONG.  
1.57 [0.062] MINIMUM PCB THICKNESS.
  - THIS CAGE IS FOR SINGLE SIDED USE ONLY.
  - CAN BE USED WITH THE FOLLOWING LIGHT PIPE PART NUMBERS:  
747260001 - LIGHT PIPE FROM BACK TO TOP  
(REFER TO DOCUMENT SD-74726-001)  
747260002 - LIGHT PIPE FROM SIDE TO TOP  
(REFER TO DOCUMENT SD-74726-002)
  - MATERIAL: COPPER ALLOY  
PLATING: PRE-PLATED WITH NICKEL
  - THIS PART MEETS THE RESTRICTION OF HAZARDOUS SUBSTANCES IN ELECTRICAL AND ELECTRONIC EQUIPMENT (ROHS) DIRECTIVE (2002/95/EC).

REV DWS: CAGE REV E: MSL: 200-055 C: DRAWN: JRESENDE 2009/09/28 CHK: KX: JANTIA APPR: J. JANTIA DES: JRESENDE 2009/09/28	QUALITY SYMBOLS	GENERAL TOLERANCES (UNLESS SPECIFIED)	DIMENSION STYLE	SCALE	DESIGN UNITS	THIRD ANGLE PROJECTION
		4 PLACES ± 0.13 ± 0.01 3 PLACES ± 0.25 ± 0.01 2 PLACES ± 0.13 ± 0.01 1 PLACE ± 0.25 ± 0.01 ANGULAR ± 1°	MM/IN	5:1	METRIC	
		DRAFT WHERE APPLICABLE MUST REMAIN WITHIN DIMENSIONS	MATERIAL NO.	DOCUMENT NO.	SFP ONE PIECE CAGE PRESS-FIT (0.120 LEGS) W/ MODIFIED LATCH TANG	
			747370033	SD-74737-0033	MOLEX INCORPORATED	
			THIS DRAWING CONTAINS INFORMATION THAT IS PROPRIETARY TO MOLEX INCORPORATED AND SHOULD NOT BE USED WITHOUT WRITTEN PERMISSION		SHEET NO. 1 OF 3	



20 19 18 17 16 15 14 13 12 11 10 9 8 7 6 5 4 3 2 1



SECTION B-B

REV DIMS: CAGE REV REV DIMS: 2009-09-28 CHYKOKX/ANITA 2010/04/27 APPROVAL/ANITA 2010/05/04	QUALITY SYMBOLS	GENERAL TOLERANCES (UNLESS SPECIFIED)	DIMENSION STYLE	SCALE	DESIGN UNITS	THIRD ANGLE PROJECTION																
	◻=0 ◻=0	<table border="1"> <thead> <tr> <th></th> <th>mm</th> <th>INCH</th> </tr> </thead> <tbody> <tr> <td>4 PLACES ± ---</td> <td>± ---</td> <td>± ---</td> </tr> <tr> <td>3 PLACES ± ---</td> <td>± 0.005</td> <td>± 0.001</td> </tr> <tr> <td>2 PLACES ± 0.15</td> <td>± 0.01</td> <td>± 0.004</td> </tr> <tr> <td>1 PLACE ± 0.25</td> <td>± ---</td> <td>± ---</td> </tr> </tbody> </table>		mm	INCH	4 PLACES ± ---	± ---	± ---	3 PLACES ± ---	± 0.005	± 0.001	2 PLACES ± 0.15	± 0.01	± 0.004	1 PLACE ± 0.25	± ---	± ---	DIMENSION STYLE: MM/IN SCALE: 5:1 DESIGN UNITS: METRIC	DRAWN BY: JRESENDE DATE: 2009/09/28 CHECKED BY: JRESENDE DATE: 2009/09/28 APPROVED BY: JRESENDE DATE: 2009/09/28	TITLE: SFP ONE PIECE CAGE PRESS-FIT (0.120 LEGS) W/ MODIFIED LATCH TANG	MOLEX INCORPORATED	SHEET NO. 3 OF 3
		mm	INCH																			
	4 PLACES ± ---	± ---	± ---																			
3 PLACES ± ---	± 0.005	± 0.001																				
2 PLACES ± 0.15	± 0.01	± 0.004																				
1 PLACE ± 0.25	± ---	± ---																				
DRAFT WHERE APPLICABLE MUST REMAIN WITHIN DIMENSIONS	MATERIAL NO. 747370033	DOCUMENT NO. SD-74737-0033	THIS DRAWING CONTAINS INFORMATION THAT IS PROPRIETARY TO MOLEX INCORPORATED AND SHOULD NOT BE USED WITHOUT WRITTEN PERMISSION																			
REV	DESCRIPTION																					

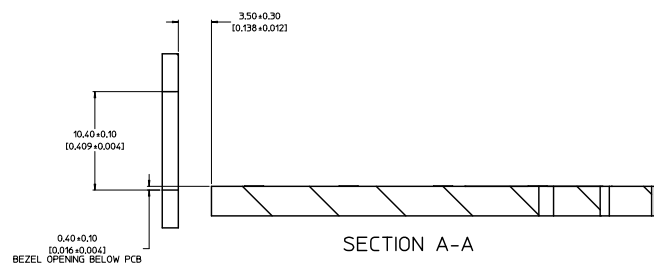
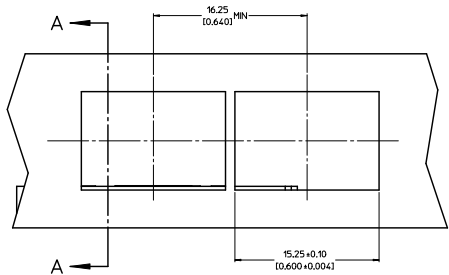
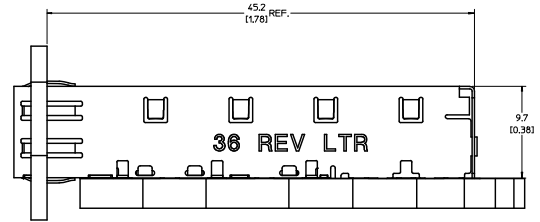
Is: Jrome, D.P. AM 1  
Rev. D 2004/06/28

19 18 17 16 15 14 13 12 11 10 9 8 7 6 5 4 3 2 1



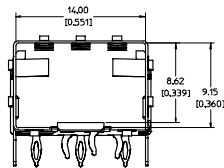
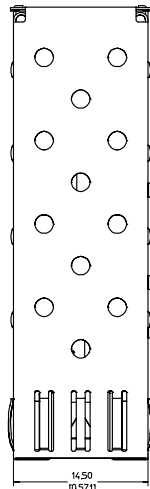
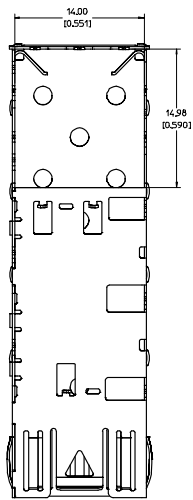




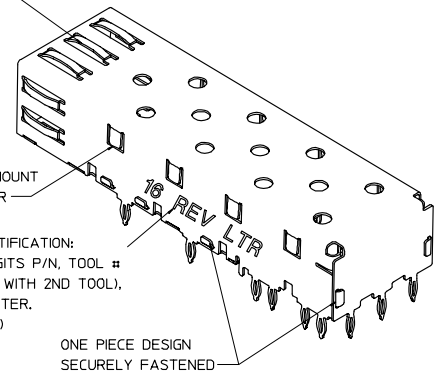


INITIAL RELEASE E.C. UNLESS SPECIFIED DRAWN BY: JERWIN 2010/08/18 CHECKED BY: AJOHNSTON 2010/08/18 APPROVED BY: KJANOTA 2010/08/26 DESCRIPTION: SFP ONE PIECE CAGE	QUALITY SYMBOLS	GENERAL TOLERANCES (UNLESS SPECIFIED)	DIMENSION STYLE	SCALE	DESIGN UNITS	THIRD ANGLE PROJECTION
	▽=0 ▽=0.05	4 PLACES ± --- ± --- 3 PLACES ± --- ± 0.005 2 PLACES ± 0.13 ± 0.01 1 PLACE ± 0.25 ± --- ANGULAR ± 1 °	MM/IN	5:1	METRIC	
		DRAFT WHERE APPLICABLE MUST REMAIN WITHIN DIMENSIONS				
			MATERIAL NO. 747370036	DOCUMENT NO. SD-74737-0036	SHEET NO. 3 OF 4	
THIS DRAWING CONTAINS INFORMATION THAT IS PROPRIETARY TO MOLEX INCORPORATED AND SHOULD NOT BE USED WITHOUT WRITTEN PERMISSION						



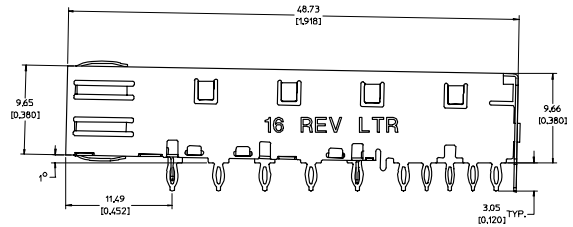


SPRING FINGER GASKET WITH TWO POINTS OF CONTACT. COMPLIES WITH (SFP) MSA BOARD AND BEZEL LOCATIONS.



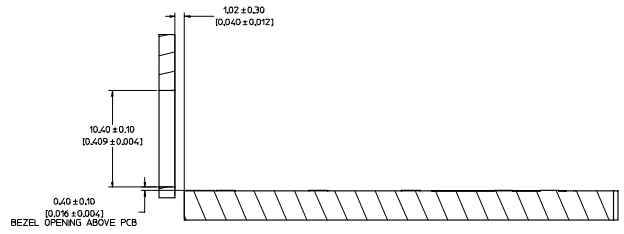
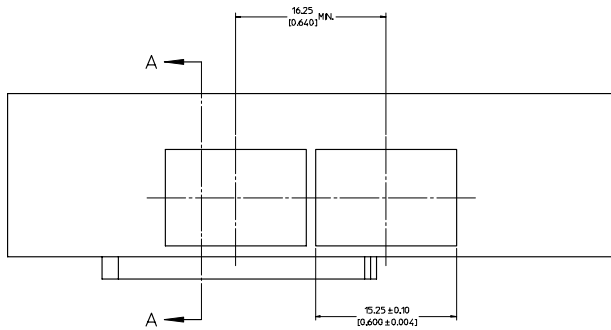
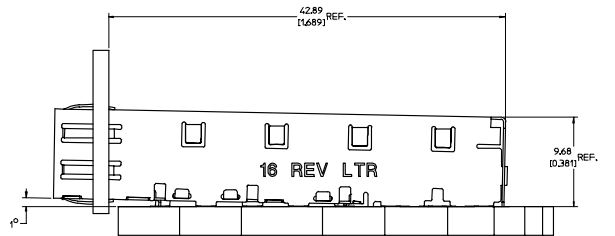
NOTES:

- PRESS FIT LEGS, 0.120 INCHES LONG. 157 [0.062] MINIMUM PCB THICKNESS.
- THIS CAGE IS FOR SINGLE SIDED USE ONLY.
- CAN BE USED WITH THE FOLLOWING LIGHT PIPE PART NUMBERS:  
 747260001 - LIGHT PIPE FROM BACK TO TOP (REFER TO DOCUMENT SD-74726-001)  
 747260002 - LIGHT PIPE FROM SIDE TO TOP (REFER TO DOCUMENT SD-74726-002)
- MATERIAL: COPPER ALLOY  
 PLATING: PRE-PLATED WITH NICKEL
- THIS PART MEETS THE RESTRICTION OF HAZARDOUS SUBSTANCES IN ELECTRICAL AND ELECTRONIC EQUIPMENT (ROHS) DIRECTIVE (2002/95/EC).



UPDATED 3D MODEL US72008-0144 2007/09/28 DRAWN: COX CHKD: JEFFREY MAHOOD 2007/10/02 APPROVED: JEFFREY MAHOOD 2007/10/02 DESCRIPTION:	QUALITY SYMBOLS	GENERAL TOLERANCES (UNLESS SPECIFIED)	DIMENSION STYLE MM/IN DRAWN BY: COX DATE: 2006/10/30 CHECKED BY: RMAHOOD DATE: 2006/10/30 APPROVED BY: RMAHOOD DATE: 2006/10/30	SCALE 5:1 DESIGN UNITS METRIC THIRD ANGLE PROJECTION	TITLE SFP ONE PIECE CAGE PRESS-FIT (0.120 LEGS) FOR PCI
	4 PLACES ± --- ± --- 3 PLACES ± --- ± 0.05 2 PLACES ± 0.13 ± 0.01 1 PLACE ± 0.25 ± --- ANGULAR ± 1°	MATERIAL NO. 747370016 DOCUMENT NO. SD-74737-016	MOLEX INCORPORATED	SHEET NO. 1 OF 4	
	DRAFT WHERE APPLICABLE MUST REMAIN WITHIN DIMENSIONS	THIS DRAWING CONTAINS INFORMATION THAT IS PROPRIETARY TO MOLEX INCORPORATED AND SHOULD NOT BE USED WITHOUT WRITTEN PERMISSION			





SECTION A-A

UPDATED 3D MODELS US72008-0144 2007/09/28 DRAWN: COX CHECKED: RMAHMOOD APPROVED: RMAHMOOD DATE: 2007/10/02 REV: 1	QUALITY SYMBOLS	GENERAL TOLERANCES (UNLESS SPECIFIED)	DIMENSION STYLE MM/IN DRAWN BY: COX DATE: 2006/10/30 CHECKED BY: RMAHMOOD DATE: 2006/10/30 APPROVED BY: RMAHMOOD DATE: 2006/10/30	SCALE 5:1 DESIGN UNITS METRIC THIRD ANGLE PROJECTION	TITLE SFP ONE PIECE CAGE PRESS-FIT (0.120 LEGS) FOR PCI
	4 PLACES ± --- ± --- 3 PLACES ± --- ± 0.005 2 PLACES ± 0.13 ± 0.1 1 PLACE ± 0.25 ± ---	ANGULAR ± 1 °	MATERIAL NO. 747370016	DOCUMENT NO. SD-74737-016	SHEET NO. 3 OF 4
	DRAFT WHERE APPLICABLE MUST REMAIN WITHIN DIMENSIONS		MOLEX INCORPORATED THIS DRAWING CONTAINS INFORMATION THAT IS PROPRIETARY TO MOLEX INCORPORATED AND SHOULD NOT BE USED WITHOUT WRITTEN PERMISSION		

