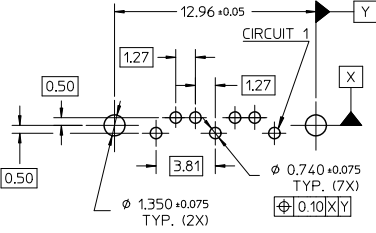
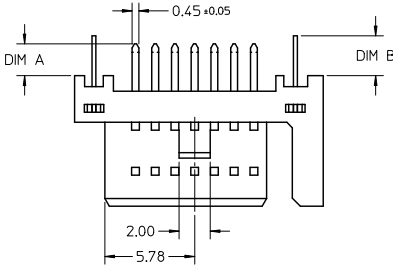
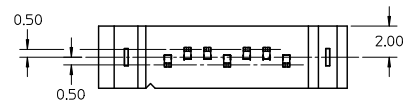
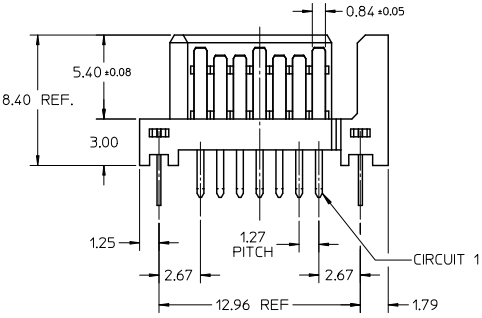
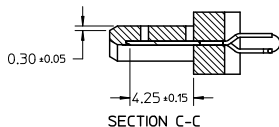
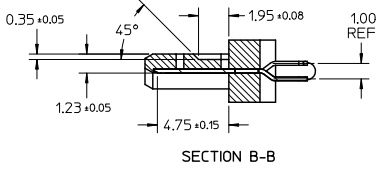
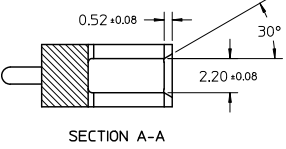
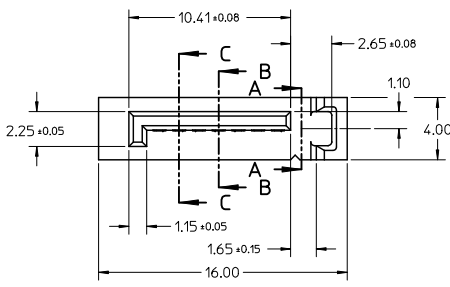


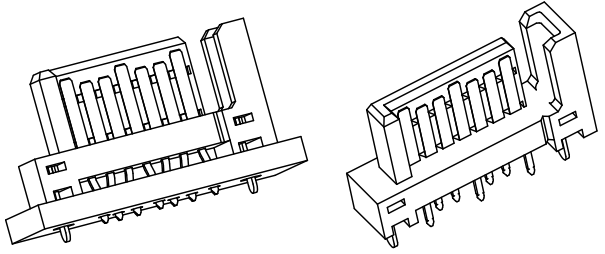
10 9 8 7 6 5 4 3 2 1



RECOMMENDED P.C.B. LAYOUT (T=1.6mm/2.0mm/2.4mm)



- NOTES:**
- MATERIAL:**  
HOUSING: THERMAL PLASTIC, UL94V-0, COLOR: SEE SHEET 2  
TERMINAL/PEG: COPPER ALLOY, THICKNESS=0.25MM
  - TERMINAL PLATING:**  
CONTACT AREA: (a) GOLD FLASH  
(b) 0.76 MICRON GOLD PLATED  
(c) 0.38 MICRON GOLD PLATED
  - SOLDER TAIL:**  
1.27 MICRON MIN. MATTE TIN PLATED
  - UNDER PLATE:**  
1.27 MICRON MIN. NICKEL PLATED
  - PEG PLATING:**  
1.27 MICRON MIN. MATTE TIN PLATED OVERALL  
1.27 MICRON MIN. NICKEL UNDER PLATED
  - PACKAGING SPECIFICATION REFER TO PK-67491-001**
  - PRODUCT SPECIFICATION REFER TO PS-67491-001**
  - MATING PART: 67489**
  - RECOMMENDED PROCESS: WAVE SOLDERING**



<b>OBsolete PARTS</b> EC NO: SH2011-0104 DRAWING: H CHKD: CHYD APPR: RZHANG DATE: 2010/10/22 DATE: 2010/11/03	QUALITY SYMBOLS ▽=0 ▽=0 ▽=0	GENERAL TOLERANCES (UNLESS SPECIFIED) mm INCH 4 PLACES ± --- ± --- 3 PLACES ± --- ± --- 2 PLACES ± 0.15 ± --- 1 PLACE ± 0.25 ± --- ANGULAR ± 3°	DIMENSION STYLE MM ONLY DRAWN BY: GRATE MA DATE: 2004/02/02 CHECKED BY: YA JUN DATE: 2004/02/02 APPROVED BY: RZHANG DATE: 2010/11/03	SCALE: 4:1 DESIGN UNITS: METRIC THIRD ANGLE PROJECTION	TITLE: 1.27MM HIGH SPEED PLUG VERTICAL TYPE
	DRAFT WHERE APPLICABLE MUST REMAIN WITHIN DIMENSIONS	MATERIAL NO. SEE CHART IN SHEET 2	MOLEX INCORPORATED	SHEET NO. 1 OF 2	
	DOCUMENT NO. SD-67491-001	THIS DRAWING CONTAINS INFORMATION THAT IS PROPRIETARY TO MOLEX INCORPORATED AND SHOULD NOT BE USED WITHOUT WRITTEN PERMISSION			
				SIZE: A3	

	10	9	8	7	6	5	4	3	2	1
	P/N	PLATING TYPE	DIM 'A'	DIM 'B'	COLOR	SOLDE AREA PLATING				
F	67491-0020	SEE NOTE 2(a)	2.05	2.57	BLACK	PURE TIN MATTE FINISH				
	67491-0021	SEE NOTE 2(b)								
	67491-0022	SEE NOTE 2(c)								
	67491-0025	SEE NOTE 2(a)								
	67491-0026	SEE NOTE 2(b)								
E	67491-0027	SEE NOTE 2(c)	2.35	BLUE PANTONE NO. 293C $\Delta E < 3$						
	67491-2020	SEE NOTE 2(a)								
	67491-2021	SEE NOTE 2(b)								
	67491-2025	SEE NOTE 2(a)								
	67491-2027	SEE NOTE 2(c)								
D	67491-3010	SEE NOTE 2(a)	3.00	3.20	BLACK					
	67491-3011	SEE NOTE 2(b)								
	67491-3012	SEE NOTE 2(c)								
	67491-3110	SEE NOTE 2(a)								
	67491-3111	SEE NOTE 2(b)								

<b>OBSOLETE PARTS</b> EC NO: SH2011-0104 DRWNG: GLLI 2010/10/22 CHKD: / APPR: RZHANG 2010/11/03 DESCRIPTION REV	QUALITY SYMBOLS	GENERAL TOLERANCES (UNLESS SPECIFIED)	DIMENSION STYLE	SCALE	DESIGN UNITS	THIRD ANGLE PROJECTION
	$\nabla = 0$	4 PLACES ± --- ± ---	MM ONLY	4:1	METRIC	
	$\nabla = 0$	3 PLACES ± --- ± ---	DRAWN BY DATE	TITLE <b>1.27MM HIGH SPEED PLUG VERTICAL TYPE</b>		
	$\nabla = 0$	2 PLACES ± 0.15 ± ---	GRATE MA 2004/02/02			
	$\nabla = 0$	1 PLACE ± 0.25 ± ---	CHECKED BY DATE			
	ANGULAR ± 3 °	YA JUN 2004/02/02				
	DRAFT WHERE APPLICABLE MUST REMAIN WITHIN DIMENSIONS	APPROVED BY DATE	MATERIAL NO. <b>SEE CHART</b>		RZHANG 2010/11/03 <b>MOLEX INCORPORATED</b>	DOCUMENT NO. <b>SD-67491-001</b>
		SIZE 		THIS DRAWING CONTAINS INFORMATION THAT IS PROPRIETARY TO MOLEX INCORPORATED AND SHOULD NOT BE USED WITHOUT WRITTEN PERMISSION		

ib\_frame\_A3\_P\_AM\_T  
Rev. F 2009/06/18