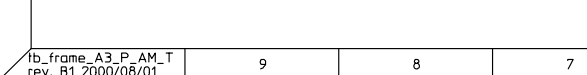
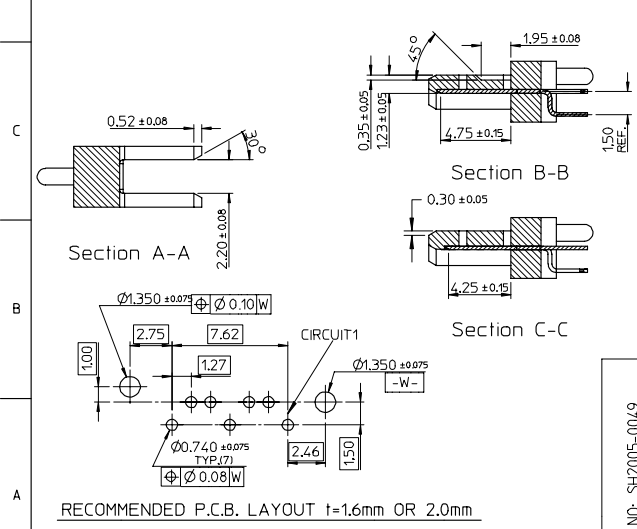
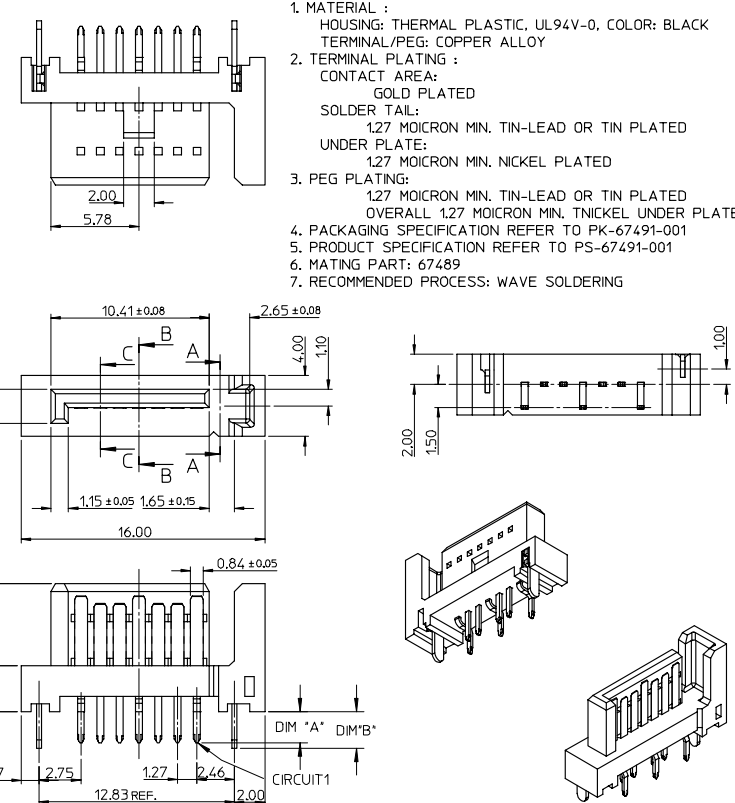


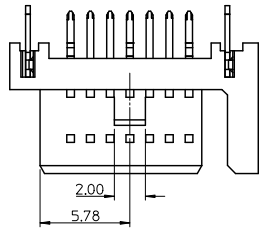
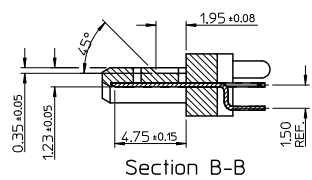
	10	9	8	7	6	5	4	3	2	1					
	P/N	CONTACT PLATING TYPE	*A*	*B*	PCB THICKNESS	SOLDERING PLATE									
F	67491-0030	GOLD FLASH	2.05	2.40	1.60	TIN-LEAD									
	67491-0031	0.76 MICRON GOLD PLATED													
	67491-0032	0.38 MICRON GOLD PLATED													
	67491-0035	GOLD FLASH													
	67491-0036	0.76 MICRON GOLD PLATED													
67491-0037	0.38 MICRON GOLD PLATED														
E	67491-0038	GOLD FLASH	3.00	3.20	2.40						PURE TIN				
	67491-0039	0.76 MICRON GOLD PLATED													
	67491-0040	0.38 MICRON GOLD PLATED													
	67491-1030	GOLD FLASH													
	67491-1031	0.76 MICRON GOLD PLATED													
67491-1032	0.38 MICRON GOLD PLATED														
D	67491-1035	GOLD FLASH	2.35	2.40	2.00	PURE TIN									
	67491-1036	0.76 MICRON GOLD PLATED													
	67491-1037	0.38 MICRON GOLD PLATED													
	67491-1038	GOLD FLASH													
	67491-1039	0.76 MICRON GOLD PLATED													
67491-1040	0.38 MICRON GOLD PLATED														

NOTES:
1. MATERIAL :
HOUSING: THERMAL PLASTIC, UL94V-0, COLOR: BLACK
TERMINAL/PEG: COPPER ALLOY
2. TERMINAL PLATING :
CONTACT AREA:
GOLD PLATED
SOLDER TAIL:
1.27 MOICRON MIN. TIN-LEAD OR TIN PLATED
UNDER PLATE:
1.27 MOICRON MIN. NICKEL PLATED
3. PEG PLATING:
1.27 MOICRON MIN. TIN-LEAD OR TIN PLATED
OVERALL 1.27 MOICRON MIN. TKNICKEL UNDER PLATED
4. PACKAGING SPECIFICATION REFER TO PK-67491-001
5. PRODUCT SPECIFICATION REFER TO PS-67491-001
6. MATING PART: 67489
7. RECOMMENDED PROCESS: WAVE SOLDERING

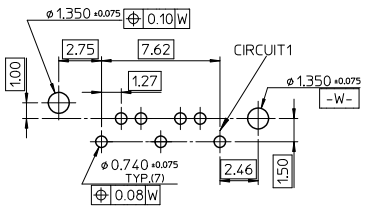
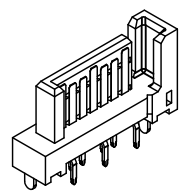
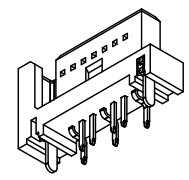
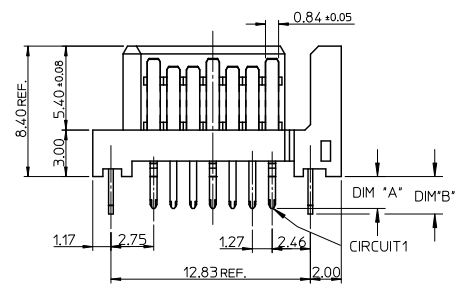
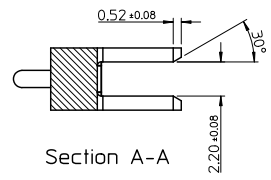
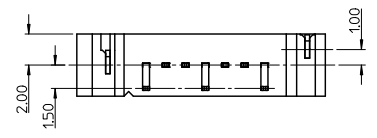
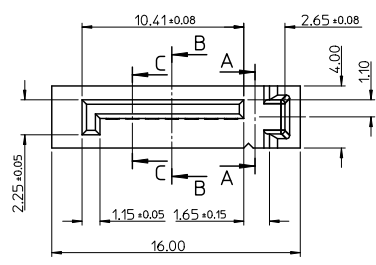
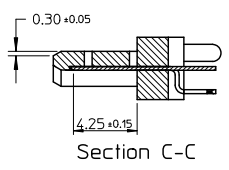


EC NO: SH2005-0049 DRWN:GRMA 2004/09/03 CHKD:GRATE M000/09/07 APPR: YTYAP 2004/09/10	QUALITY SYMBOLS	GENERAL TOLERANCES (UNLESS SPECIFIED)	SCALE 4:1	DESIGN UNITS METRIC	THIRD ANGLE PROJECTION	REVISE ON CAD ONLY
	DESCRIPTION	4 PLACES ± --- ± --- 3 PLACES ± --- ± --- 2 PLACES ± 0.15 ± --- 1 PLACE ± 0.25 ± --- ANGULAR ± 3 °	mm INCH	DIMENSION STYLE MM ONLY	TITLE	1.27MM HIGH SPEED SERIAL PLUG VERTICLE TYPE
REV	DRAFT WHERE APPLICABLE	MUST REMAIN WITHIN DIMENSIONS	APPROVED BY ERIC	DATE '01/06/21	MATERIAL NO. SEE TABLE	DOCUMENT NO. SD-67491-002
						SHEET NO. 1 OF 1

10 9 8 7 6 5 4 3 2 1



- NOTES:
- MATERIAL:
HOUSING: SEE TABLE, UL94V-0, COLOR: BLACK OR BULE (SEE P/N TABLE)
TERMINAL/PEG: COPPER ALLOY
 - TERMINAL PLATING :
CONTACT AREA: GOLD PLATED
SOLDER TAIL: 1.27 MICRON MIN. TIN PLATED
UNDER PLATE: 1.27 MICRON MIN. NICKEL PLATED
 - PEG PLATING:
1.27 MICRON MIN. TIN PLATED
OVERALL 1.27 MICRON MIN. NICKEL UNDER PLATED
 - PACKAGING SPECIFICATION REFER TO PK-67491-001
 - PRODUCT SPECIFICATION REFER TO PS-67491-001
 - MATING PART: 67489
 - RECOMMENDED PROCESS: WAVE SOLDERING
 - PRODUCT COMPLIANT TO RoHS DIRECTIVE 2002/95/EC AND ELV DIRECTIVE 2000/53/EC



OBSOLETE PARTS EC NO: SH2011-0104 DRAWING NO: 2010/10/22 CHKD: CHYKD APPR: RZHANG REV	DESCRIPTION	QUALITY SYMBOLS	GENERAL TOLERANCES (UNLESS SPECIFIED)	DIMENSION STYLE	SCALE	DESIGN UNITS	THIRD ANGLE PROJECTION
		▽=0	4 PLACES ± --- ± ---	MM ONLY	4:1	METRIC	
		▽=0	3 PLACES ± --- ± ---				
		▽=0	2 PLACES ± 0.15 ± ---				

	1 PLACE ± 0.25 ± ---	ANGULAR ± 3°	DRAFT WHERE APPLICABLE MUST REMAIN WITHIN DIMENSIONS
--	----------------------	--------------	--

DRAWN BY	DATE	TITLE
RICHARD	'01/06/21	1.27MM HIGH SPEED SERIAL PLUG VERTICAL TYPE
CHECKED BY	DATE	
VINCENT	'01/06/21	
APPROVED BY	DATE	
RZHANG	2010/11/03	
MATERIAL NO.	DOCUMENT NO.	SHEET NO.
SEE CHART IN SHEET 2	SD-67491-002	1 OF 2

MOLEX INCORPORATED	
THIS DRAWING CONTAINS INFORMATION THAT IS PROPRIETARY TO MOLEX INCORPORATED AND SHOULD NOT BE USED WITHOUT WRITTEN PERMISSION	

	10	9	8	7	6	5	4	3	2	1			
	P/N	CONTACT PLATING TYPE	*A*	*B*	PCB THICKNESS	SOLDERING PLATE	COLOR	PLASTIC TYPE					
F	67491-1030	GOLD FLASH	2.05	2.40	1.60	PURE TIN	BLACK	THERMAL PLASTIC					
	67491-1031	0.76 MICRON GOLD PLATED											
	67491-1032	0.38 MICRON GOLD PLATED											
67491-1035	GOLD FLASH												
67491-1036	0.76 MICRON GOLD PLATED												
67491-1037	0.38 MICRON GOLD PLATED												
E	67491-1038	GOLD FLASH	3.00	3.20	2.40		PURE TIN	BLACK	THERMAL PLASTIC				
	67491-1039	0.76 MICRON GOLD PLATED											
	67491-1040	0.38 MICRON GOLD PLATED											
D	67491-2031	0.76 MICRON GOLD PLATED	2.05	2.40	1.60					PURE TIN	BLUE PENTONE NO.293C $\Delta E < 3$	THERMAL PLASTIC	
	67491-2032	0.38 MICRON GOLD PLATED											
	67491-2035	GOLD FLASH											
67491-2036	0.76 MICRON GOLD PLATED												
67491-2037	0.38 MICRON GOLD PLATED												
67491-2038	GOLD FLASH												
C	67491-2039	0.76 MICRON GOLD PLATED	3.00	3.20	2.40	PURE TIN	BLACK	HIGH TEMPERATURE THERMAL PLASTIC					
	67491-2040	0.38 MICRON GOLD PLATED											
	67491-1130	GOLD FLASH											
67491-1131	0.76 MICRON GOLD PLATED												
67491-1132	0.38 MICRON GOLD PLATED												
A	67491-1135	GOLD FLASH	2.35	2.40	2.00				PURE TIN	BLACK	HIGH TEMPERATURE THERMAL PLASTIC		
	67491-1136	0.76 MICRON GOLD PLATED											
	67491-1137	0.38 MICRON GOLD PLATED											
	67491-1138	GOLD FLASH											
	67491-1139	0.76 MICRON GOLD PLATED											
67491-1140	0.38 MICRON GOLD PLATED												

OBSOLETE PARTS EC NO: SH2011-0104 DRAWN BY: GDRWINGLLI CHKD: CHYD APPR: RZHANG REV	QUALITY SYMBOLS	GENERAL TOLERANCES (UNLESS SPECIFIED)	DIMENSION STYLE	SCALE	DESIGN UNITS	THIRD ANGLE PROJECTION
	$\nabla=0$	mm INCH	MM ONLY	4:1	METRIC	
	$\nabla=0$	4 PLACES ± --- ± ---	DRAWN BY DATE	TITLE		
	$\nabla=0$	3 PLACES ± --- ± ---	RICHARD '01/06/21	1.27MM HIGH SPEED SERIAL PLUG VERTICAL TYPE		
	2 PLACES ± 0.15 ± ---	CHECKED BY DATE	MOLEX INCORPORATED			
	1 PLACE ± 0.25 ± ---	VINCENT '01/06/21	SD-67491-002			
	ANGULAR ± 3°	APPROVED BY DATE	SHEET NO.			
	DRAFT WHERE APPLICABLE MUST REMAIN WITHIN DIMENSIONS	RZHANG 2010/11/03	2 OF 2			
		MATERIAL NO.	DOCUMENT NO.			
		SEE CHART	THIS DRAWING CONTAINS INFORMATION THAT IS PROPRIETARY TO MOLEX INCORPORATED AND SHOULD NOT BE USED WITHOUT WRITTEN PERMISSION			