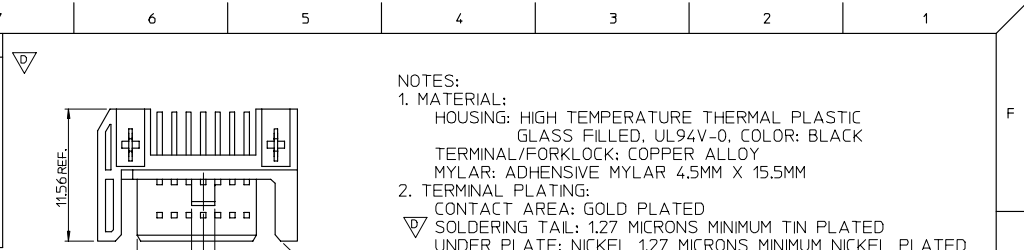
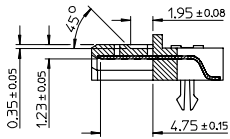


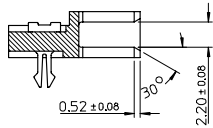
P/N	CONTACT AREA PLATING	PACKAGE METHOD	REMARK
67490-1220	GOLD FLASH	WITHOUT MYLAR	PURE TIN
67490-1221	0.76 MICRONS GOLD PLATED	TRAY PACKAGE	
67490-1225	0.38 MICRONS GOLD PLATED	PK-67490-001	
67490-1230	GOLD FLASH	WITH MYLAR	
67490-1231	0.76 MICRONS GOLD PLATED	TAPE REEL	
67490-1235	0.38 MICRONS GOLD PLATED	PK-67490-000	
67490-1240	GOLD FLASH	WITH MYLAR	
67490-1245	0.38 MICRONS GOLD PLATED	TUBE PACKAGE	



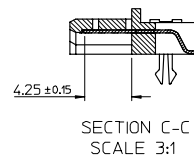
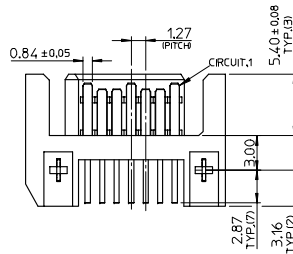
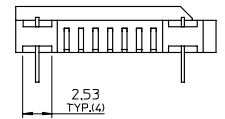
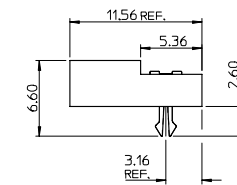
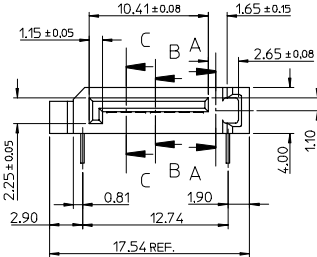
- NOTES:
- MATERIAL:
 - HOUSING: HIGH TEMPERATURE THERMAL PLASTIC GLASS FILLED, UL94V-0, COLOR: BLACK
 - TERMINAL/FORKLOCK: COPPER ALLOY
 - MYLAR: ADHENSIVE MYLAR 4.5MM X 15.5MM
 - TERMINAL PLATING:
 - CONTACT AREA: GOLD PLATED
 - SOLDERING TAIL: 1.27 MICRONS MINIMUM TIN PLATED
 - UNDER PLATE: NICKEL 1.27 MICRONS MINIMUM NICKEL PLATED
 - FORKLOCK PLATING:
 - 1.27 MICRONS MINIMUM TIN PLATED OVERALL 1.27 MICRONS MINIMUM NICKEL UNDER-PLATED
 - PACKAGING SPECIFICATION REFER TO TABLE
 - PRODUCT SPECIFICATION REFER TO PS-67490-001
 - MATING PART: 67538, 67489



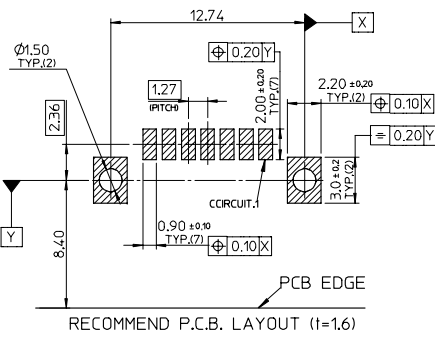
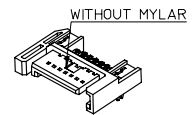
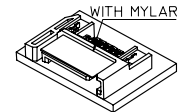
SECTION B-B
SCALE 3:1



SECTION A-A
SCALE 3:1



SECTION C-C
SCALE 3:1



OBSOLETE PART EC NO. SH2006-0566 DRAWN: CHEN26 CHKD: GRATE MA APPR: JINCHEN 2006/05/29 2006/05/30	QUALITY SYMBOLS	GENERAL TOLERANCES (UNLESS SPECIFIED)	DIMENSION STYLE	SCALE	DESIGN UNITS	THIRD ANGLE PROJECTION																		
	DESCRIPTION		MM ONLY	4:1	METRIC																			
REV	DESCRIPTION	<table border="1"> <thead> <tr> <th></th> <th>mm</th> <th>INCH</th> </tr> </thead> <tbody> <tr> <td>4 PLACES</td> <td>± 0.15</td> <td>± 0.005</td> </tr> <tr> <td>3 PLACES</td> <td>± 0.20</td> <td>± 0.008</td> </tr> <tr> <td>2 PLACES</td> <td>± 0.25</td> <td>± 0.010</td> </tr> <tr> <td>1 PLACE</td> <td>± 0.30</td> <td>± 0.012</td> </tr> <tr> <td colspan="3">ANGULAR ± 3°</td> </tr> </tbody> </table>		mm	INCH	4 PLACES	± 0.15	± 0.005	3 PLACES	± 0.20	± 0.008	2 PLACES	± 0.25	± 0.010	1 PLACE	± 0.30	± 0.012	ANGULAR ± 3°			DRAWN BY	DATE	TITLE	
	mm	INCH																						
4 PLACES	± 0.15	± 0.005																						
3 PLACES	± 0.20	± 0.008																						
2 PLACES	± 0.25	± 0.010																						
1 PLACE	± 0.30	± 0.012																						
ANGULAR ± 3°																								
			RICHARD	'01/08/08	SATA SYSTEM PLUG R/A STANDARD TYPE																			
			CHECKED BY	DATE																				
			VINCENT	'01/08/08																				
			APPROVED BY	DATE																				
			ERICK	'01/08/08																				
			MATERIAL NO.	DOCUMENT NO.	SHEET NO.																			
			SEE TABLE	SD-67490-002	1 OF 1																			
			THIS DRAWING CONTAINS INFORMATION THAT IS PROPRIETARY TO MOLEX INCORPORATED AND SHOULD NOT BE USED WITHOUT WRITTEN PERMISSION																					