

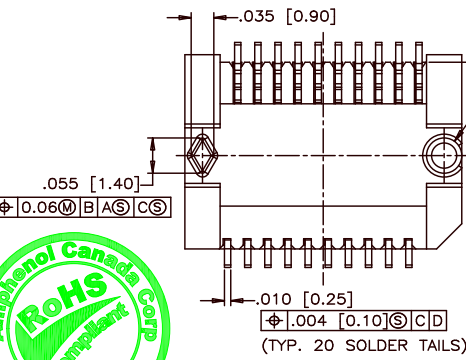
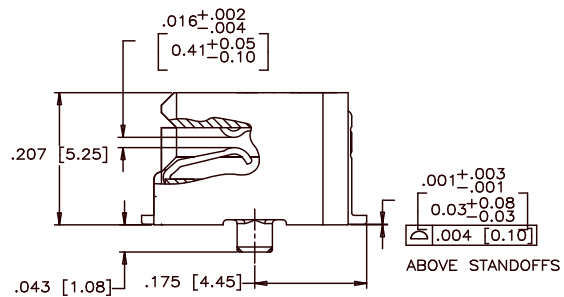
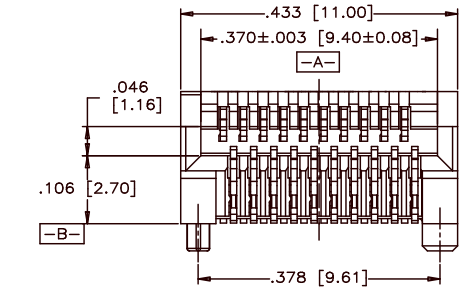
REVISIONS				
SYM	ZONE	ECN, ERN NO.	DATE	APPRD.
J		UPDATED	APR26/07	J.S.
K		UPDATED MATERIAL FOR HOUSING	MAY29/07	J.S.
L		UPDATED	APR16/08	A.G.
M		UPDATED	MAR14/11	J.S.

THIS IS A CAD DRAWING. DO NOT MANUALLY REVISE.

**MATERIAL NOTES:**  
**PLASTIC HOUSING:**  
 HIGH TEMPERATURE LCP  
 FLAMMABILITY RATING UL94V-0.

**CONTACTS:**  
 PHOSPHOR BRONZE  
**PLATING OPTION 1: (U75 ONLY)**  
 30µ" [0.76 µm] MIN. GOLD ON MATING AREA AND 150-300 µ" (3.81-7.62 µm) MIN. TIN/LEAD (90/10) PLATING ON TERMINATION OVER 50µ" [1.27 µm] MIN. NICKEL UNDER LAYER.  
**PLATING OPTION 2: (RoHS FOR UE75 ONLY)**  
 30µ" [0.76 µm] MIN. GOLD ON MATING AREA AND 2 µ" (0.05 µm) GOLD FLASH PLATING ON TERMINATION OVER 50µ" [1.27 µm] MIN. NICKEL UNDER LAYER.  
**PLATING OPTION 3: (RoHS FOR UE75 ONLY)**  
 30µ" [0.76 µm] MIN. GOLD ON MATING AREA AND 150-300 µ" (3.81-7.62 µm) MIN. LOW WHISKER MATTE TIN PLATING ON TERMINATION OVER 50µ" [1.27 µm] MIN. NICKEL UNDER LAYER.  
**PLATING OPTION 4: (FOR U75 ONLY)**  
 15µ" [0.38 µm] MIN. GOLD ON MATING AREA AND 150-300 µ" (3.81-7.62 µm) MIN. TIN/LEAD (90/10) PLATING ON TERMINATION OVER 50µ" [1.27 µm] MIN. NICKEL UNDER LAYER.  
**PLATING OPTION 5: (RoHS FOR UE75 ONLY)**  
 15µ" [0.38 µm] MIN. GOLD ON MATING AREA AND 150-300 µ" (3.81-7.62 µm) MIN. LOW WHISKER MATTE TIN PLATING ON TERMINATION OVER 50µ" [1.27 µm] MIN. NICKEL UNDER LAYER.  
**PLATING OPTION 6: (RoHS FOR UE75 ONLY)**  
 15µ" [0.38 µm] MIN. GOLD ON MATING AREA AND 150-300 µ" (3.81-7.62 µm) MIN. LOW WHISKER MATTE TIN PLATING ON TERMINATION OVER 50µ" [1.27 µm] MIN. NICKEL UNDER LAYER.  
**LUBRICANT OPTION:** LUBRICANT CAN BE ADDED ON THE CONTACTS MATING AREA (SEE P/N FOR THE OPTION)

**PACKAGING:**  
 TAPE AND REEL.  
**TEMPERATURE RANGE:**  
 -40°C TO +85°C



**AMPHENOL PART NUMBER CONFIGURATION**  
 UX75 - A 20 - X 0 0 X T

**SFP RECEPTACLE**  
 U75 = NON-RoHS  
 UE75 = RoHS COMPLIANT

**LUBRICANT OPTION ON MATING AREA**  
 0 = NO  
 1 = YES

**CONTACT PLATING**  
 (FOR U75 NON-RoHS)  
 1 = PLATING OPTION 1 (SEE MATERIAL NOTES)  
 4 = PLATING OPTION 4 (SEE MATERIAL NOTES)

**(FOR UE75 RoHS)**  
 2 = PLATING OPTION 2 (SEE MATERIAL NOTES)  
 3 = PLATING OPTION 3 (SEE MATERIAL NOTES)  
 5 = PLATING OPTION 5 (SEE MATERIAL NOTES)  
 6 = PLATING OPTION 6 (SEE MATERIAL NOTES)

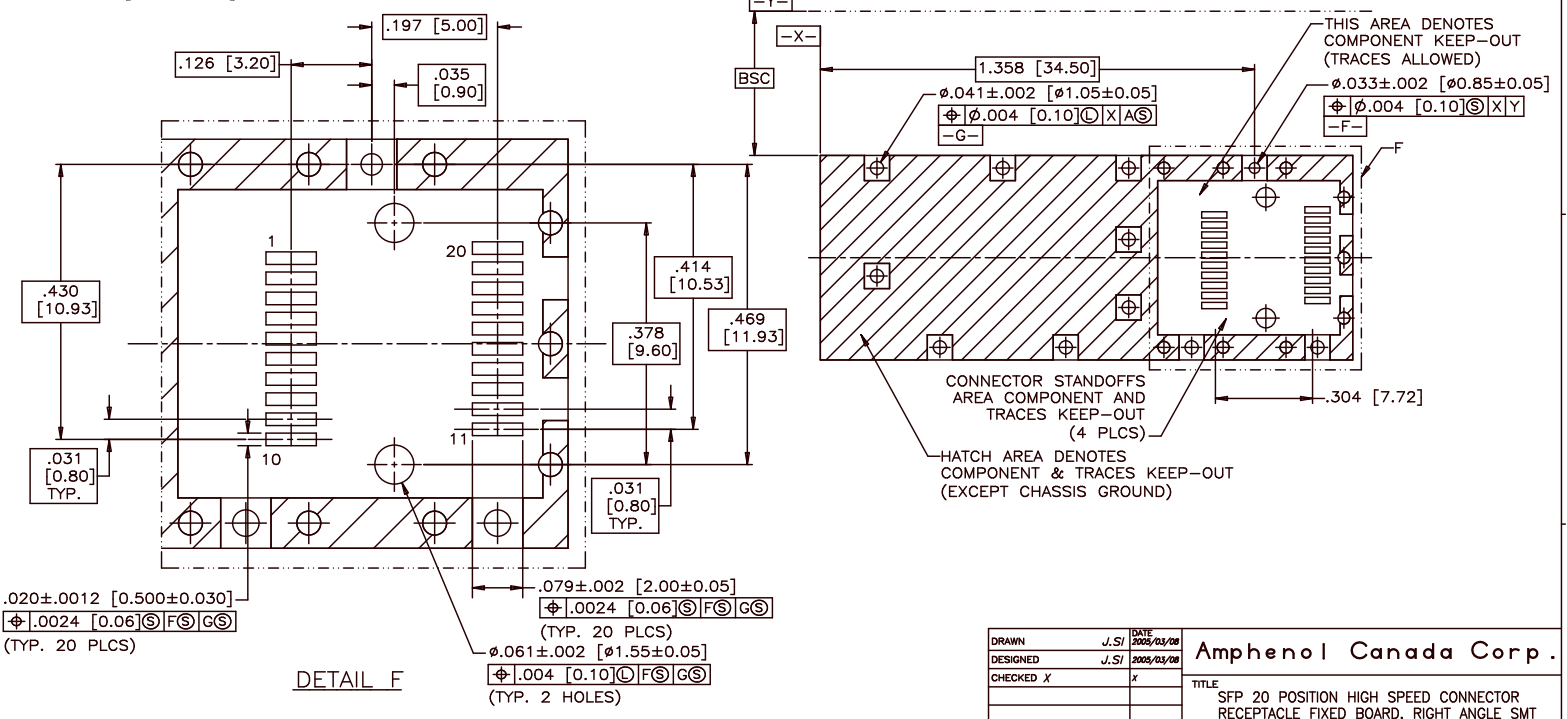
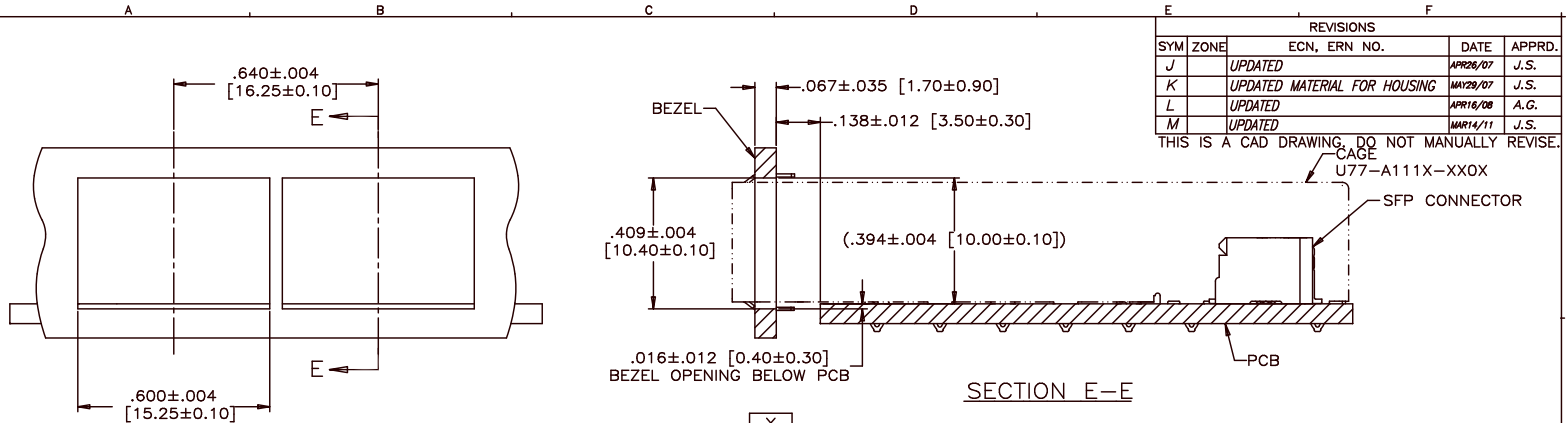


DRAWN	J.SI	DATE	2005/03/08	Amphenol Canada Corp.
DESIGNED	J.SI	DATE	2005/03/08	
CHECKED	X			TITLE SFP 20 POSITION HIGH SPEED CONNECTOR RECEPTACLE FIXED BOARD, RIGHT ANGLE SMT OPTIONAL PLATING AND LUBRICANT ON MATING
L. E. APPRD.				
Q. A. APPRD.				DWG. DRAWING NO. P-UX75-A20-X00XX
DWG. APPRD.				
ENG. REL. NO.				SCALE 4/1
REF.	X			
DIMENSIONS ARE IN INCHES (mm)		CODE ID. NO.	03554	SURF. SHEET 1 OF 3

THIS DOCUMENT CONTAINS PROPRIETARY INFORMATION AND SUCH INFORMATION MAY NOT BE DISCLOSED TO OTHERS FOR ANY PURPOSE OR USED FOR MANUFACTURING PURPOSES WITHOUT WRITTEN PERMISSION FROM AMPHENOL CANADA CORP.

REVISIONS				
SYM	ZONE	ECN, ERN NO.	DATE	APPRD.
J		UPDATED	APR26/07	J.S.
K		UPDATED MATERIAL FOR HOUSING	MAY29/07	J.S.
L		UPDATED	APR16/08	A.G.
M		UPDATED	MAR14/11	J.S.

THIS IS A CAD DRAWING, DO NOT MANUALLY REVISE.

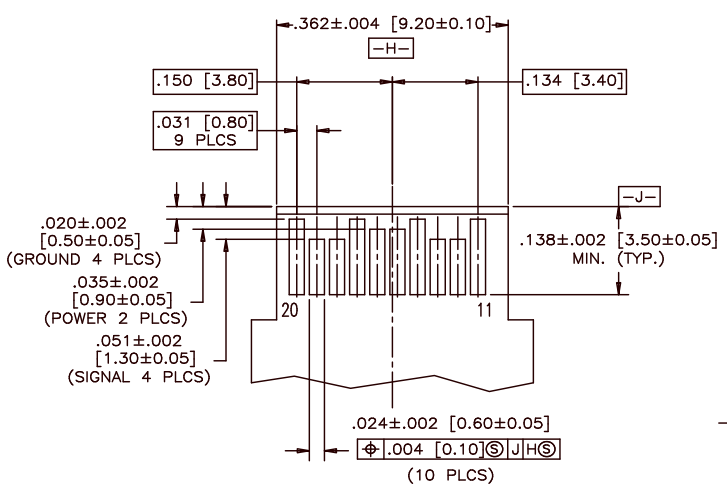


DRAWN	J.SI	DATE	2005/03/08	Amphenol Canada Corp.
DESIGNED	J.SI	DATE	2005/03/08	
CHECKED	X			
DWG. APPRD.				
ENG. REL. NO.				TITLE
REF.	X			SFP 20 POSITION HIGH SPEED CONNECTOR RECEPTACLE FIXED BOARD, RIGHT ANGLE SMT OPTIONAL PLATING AND LUBRICANT ON MATING
DIMENSIONS ARE IN INCHES (mm)	CODE ID. NO. 03554			DWG. A
				DRAWING NO. P-UX75-A20-X00XX
				SCALE 2/1 WT. SURF. SHEET 2 OF 3

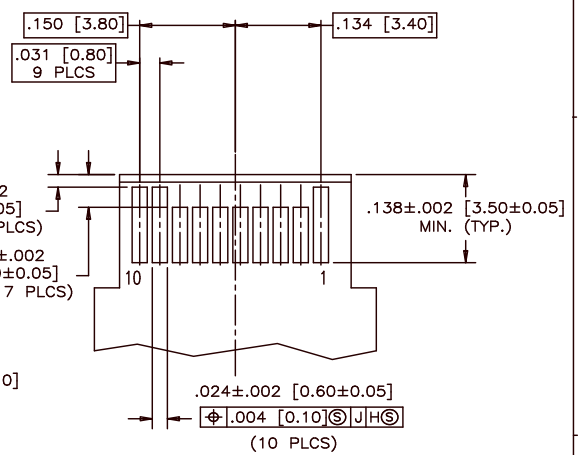
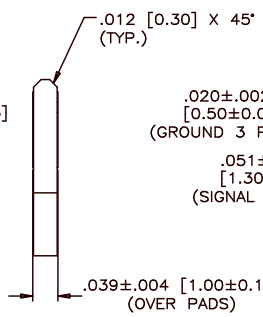
THIS DOCUMENT CONTAINS PROPRIETARY INFORMATION AND SUCH INFORMATION MAY NOT BE DISCLOSED TO OTHERS FOR ANY PURPOSE OR USED FOR MANUFACTURING PURPOSES WITHOUT WRITTEN PERMISSION FROM AMPHENOL CANADA CORP.

REVISIONS				
SYM	ZONE	ECN, ERN NO.	DATE	APPRD.
J		UPDATED	APR26/07	J.S.
K		UPDATED MATERIAL FOR HOUSING	MAY29/07	J.S.
L		UPDATED	APR16/08	A.G.
M		UPDATED	MAR14/11	J.S.

THIS IS A CAD DRAWING. DO NOT MANUALLY REVISE.



TOP VIEW OF BOARD



BOTTOM VIEW OF BOARD

RECOMMENDED LAYOUT DETAIL  
MATING TRANSCEIVER PCB

THIS DOCUMENT CONTAINS PROPRIETARY INFORMATION AND SUCH INFORMATION MAY NOT BE DISCLOSED TO OTHERS FOR ANY PURPOSE OR USED FOR MANUFACTURING PURPOSES WITHOUT WRITTEN PERMISSION FROM AMPHENOL CANADA CORP.

DRAWN	J.SI	DATE	2005/03/08	Amphenol Canada Corp.	
DESIGNED	J.SI	DATE	2005/03/08		
CHECKED	X		X		
DWG. APPRD.				TITLE	
ENG. REL. NO.				SFP 20 POSITION HIGH SPEED CONNECTOR RECEPTACLE FIXED BOARD, RIGHT ANGLE SMT OPTIONAL PLATING AND LUBRICANT ON MATING	
REF.	X			DWG. NO.	
DIMENSIONS ARE IN INCHES (mm)		CODE ID. NO.	03554	A	P-UX75-A20-X00XX
		SCALE	4:1	WT.	
		SURF.			
					SHEET 3 OF 3