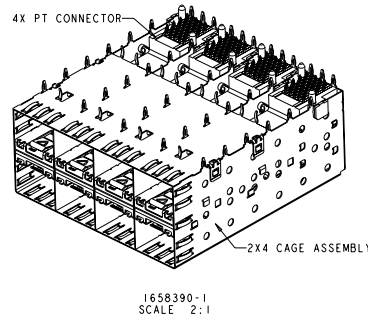
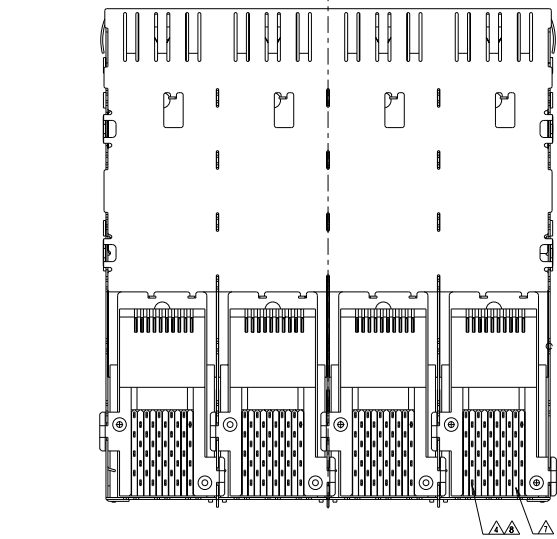
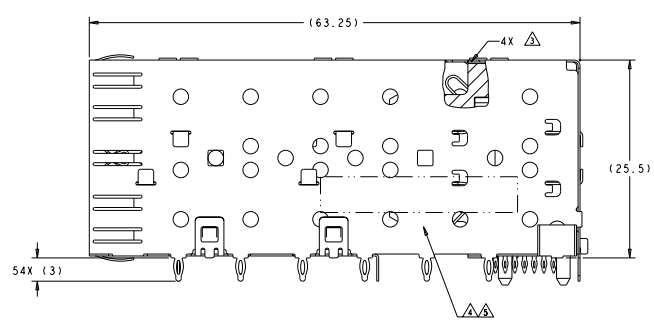
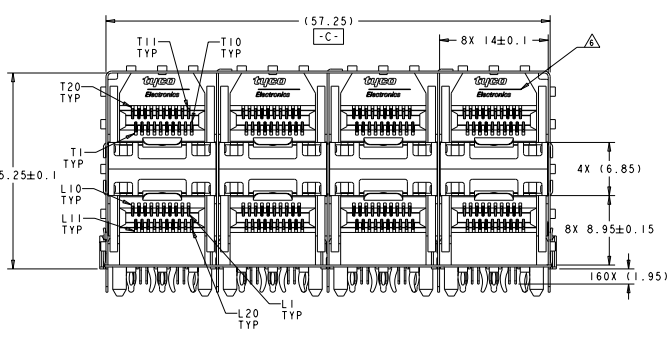


DATE REVISIONS TO DIMENSIONS
 RECEIVED FOR FABRICATION
 BY THIS ELECTRONICS CORPORATION. ALL RIGHTS RESERVED.

REV	DATE	REVISIONS	BY	CHK'D	APP'D
A		RELEASED PER EC-0513-0001-04	ZJUNBA	JG	JM
B		REVISED PER ECO-96-000548	LIPING	BW	EB
C		REVISED PER ECR-07-019492	HONGYANG	SL	SY
D		REVISED ECR-08-028454	HONGYANG	AL	SY

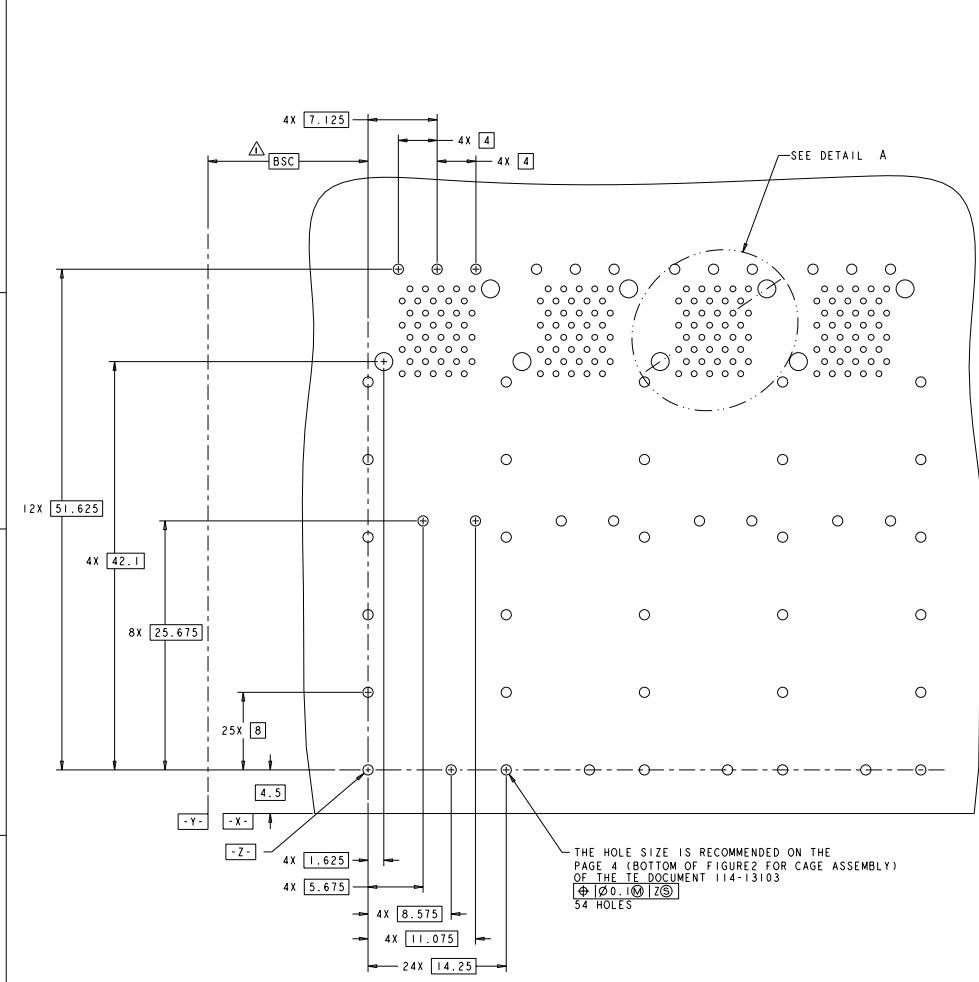


- ⚠ DATUM AND BASIC DIMENSION TO BE DETERMINED BY CUSTOMER.
- ⚠ INTERPRETATION OF DATUM REFERENCE FRAME IN ACCORDANCE WITH SECT 4.4.1.1 OF ASME Y14.5M-1994.
- ⚠ TOP OF PT CONNECTOR TO BE 0-0.15 FROM INSIDE SURFACE OF CAGE.
- ⚠ COPPER ALLOY.
- ⚠ 1.25μM MIN TIN PER ASTM B 545 OVER NICKEL FLASH PER QQ-N-290. NON-PLATED EDGES PERMISSIBLE.
- ⚠ LCP, HIGH TEMPERATURE, UL 94V-0 RATED, BLACK.
- ⚠ POLYESTER, UL 94V-0 RATED, BLACK.
- ⚠ CONTACT MATING AREA: SURFACE TREATMENT OVER 0.76μM MIN GOLD PER ASTM B 488 OVER 1.27μM MIN NICKEL PER QQ-N-290. NEEDLE EYE: 1.25μM MIN TIN PER ASTM B 545 OVER 1.27μM MIN NICKEL PER QQ-N-290. REMAINDER OF CONTACT: 0.76μM MIN NICKEL PER QQ-N-290.

1658390-1
 PART NUMBER

DATE	REVISION	BY	CHK'D	APP'D
08/13/08				
PART NAME		PT CONNECTOR AND CAGE ASSEMBLY, 2x4, PRESS FIT, STANDARD PROFILE, STP		
DRAWING NO.		1658390-1		
REV.		A		
CAGE CODE		00778		
CUSTOMER DRAWING		1658390-1		

REV	DATE	REVISIONS
ES	00	SEE SHEET 1

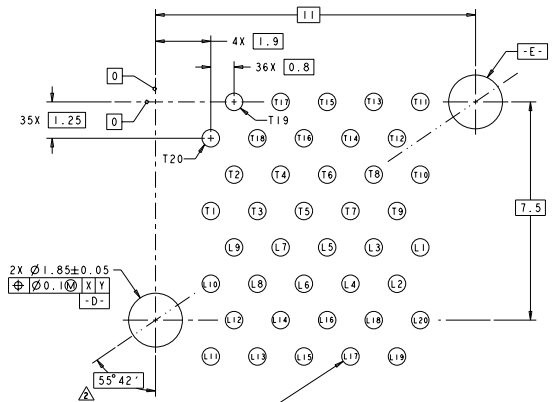


THE HOLE SIZE IS RECOMMENDED ON THE PAGE 4 (BOTTOM OF FIGURE 2 FOR CAGE ASSEMBLY) OF THE TE DOCUMENT 114-13103

$\Phi 0.10$ Z(S)

54 HOLES

RECOMMENDED PCB CONFIGURATION SCALE 5:1



THE HOLE SIZE IS RECOMMENDED ON THE PAGE 4 (TOP OF FIGURE 2 FOR CONNECTOR) OF THE TE DOCUMENT 114-13103

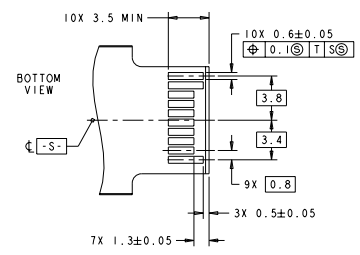
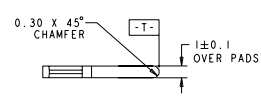
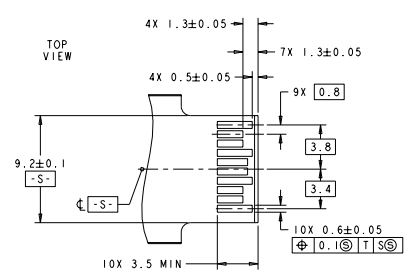
$\Phi 0.08$ D(S) E(S)

40X4 HOLES

DETAIL A SCALE 15:1

TIAN ELECTRONICS COMPANY		TE CONNECTOR 24MMX32		Tian Electronics Shanghai, China	
DESIGNER: mm	DATE: 2023/05/16	DESIGNER: mm	DATE: 2023/05/16	PT CONNECTOR AND CAGE ASSEMBLY, 2x4, PRESS FIT, STANDARD PROFILE, SFP	
PROJ: 100-2161	REV: 1	PROJ: 100-2161	REV: 1	SIZE: A	SCALE CODE: 1658390
PROJ: 114-13103	REV: 1	PROJ: 114-13103	REV: 1	DATE: 2023/05/16	DESIGNER: mm
PROJ: 100778	REV: 1	PROJ: 100778	REV: 1	DATE: 2023/05/16	DESIGNER: mm
CUSTOMER DRAWING		CUSTOMER DRAWING		PAGE 2/11	

REV	DATE	REVISIONS	BY	CHK	APP
00	ES	SEE SHEET 1			



RECOMMENDED LAYOUT FOR MATING TRANSCEIVER PCB
 SCALE: 6:1

TYPE ELECTRONICS COMPANY SHANGHAI, CHINA		TYPE ELECTRONICS SHANGHAI, CHINA	
DRAWING NO.: 165-2181 DATE: 2014.07.28 DRAWN: JIN CHECKED: JIN APPROVED: JIN	CUSTOMER NO.: 00778 CUSTOMER: 1658390	PART NO.: 165-2181 PART NAME: PT CONNECTOR AND CAGE ASSEMBLY, 2x4, PRESS FIT, STANDARD PROFILE, SFP	SHEET NO.: 3 TOTAL SHEETS: 3