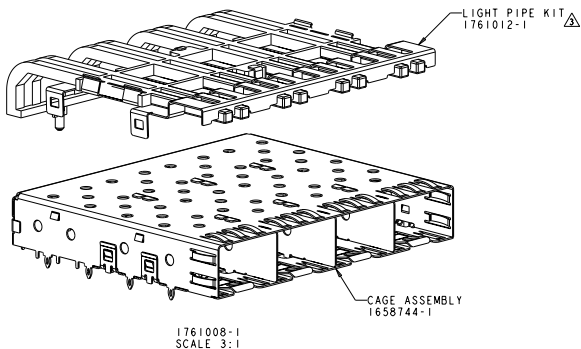
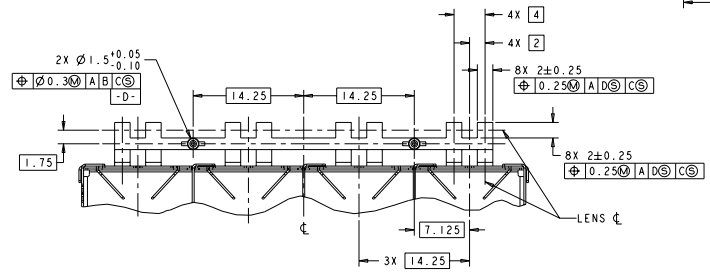
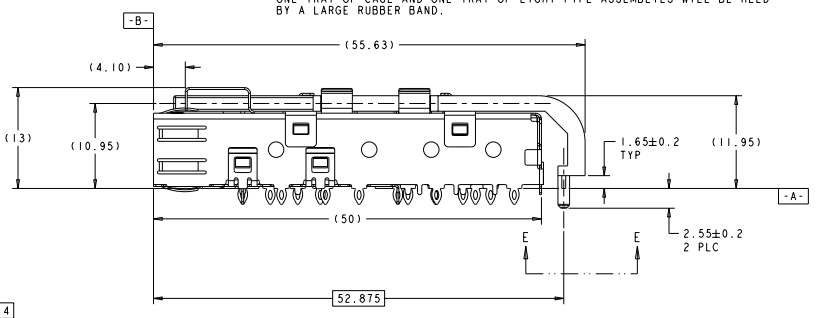
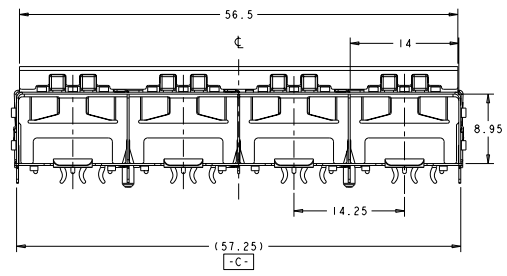


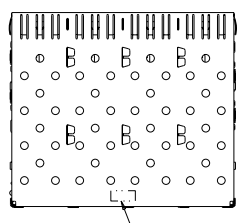
REV	DATE	DESCRIPTION	BY	CHK	APP
E1		REVISED PER ECO-11-007052			



1761008-1
 SCALE 3:1



VIEW E-E
 ROTATED 90° COUNTERCLOCKWISE

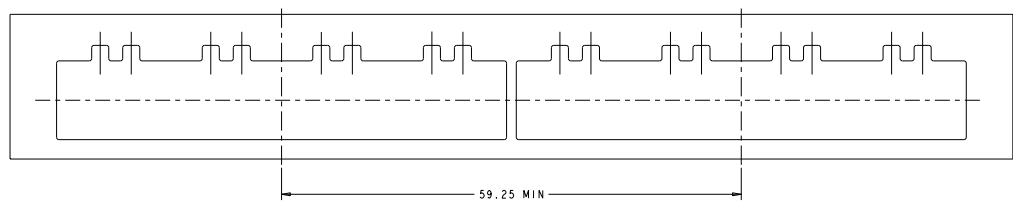
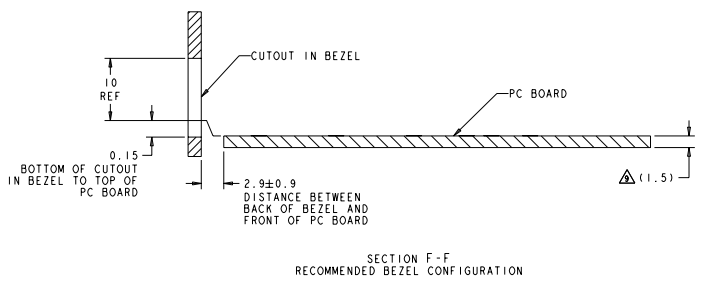
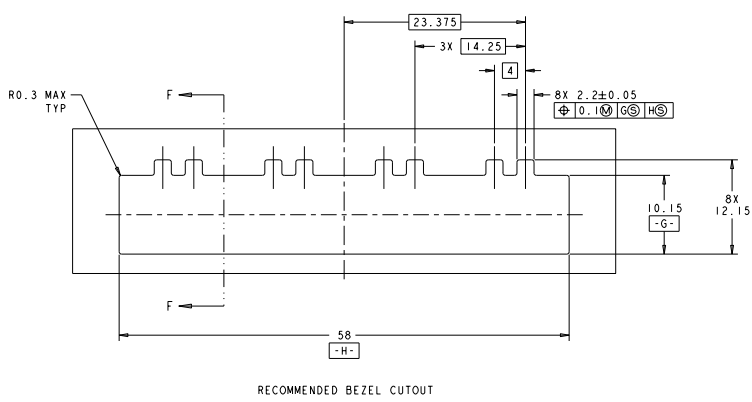


SCALE 2:1

- △ PADS AND VIAS CHASSIS GROUND.
- △ DATUM AND BASIC DIMENSIONS ESTABLISHED BY CUSTOMER.
- △ LIGHT PIPE KIT WHICH IS SEPARATE FROM THE CAGE ASSEMBLY. KIT TO BE ATTACHED AFTER SEATING OF 1658744-1 ON PCB.
- 4. LABEL ON CAGE WILL HAVE PART NUMBER 1658744-1.
- 5. REFERENCE STYLE 1 ON APPLICATION SPECIFICATION 114-13165 FOR ADDITIONAL INFORMATION ON CAGE ASSEMBLIES WITH LIGHT PIPES.
- △ REFERENCE APPLICATION SPEC 114-13120, HOLE A, FOR RECOMMENDED DRILL HOLE DIAMETER AND PLATING THICKNESSES.
- △ REFERENCE APPLICATION SPEC 114-13120, HOLE B, FOR RECOMMENDED DRILL HOLE DIAMETER AND PLATING THICKNESSES.
- △ PATTERN REPEATS FOR EACH PORT. SPACING BETWEEN PORTS IS 14.25mm.
- △ MINIMUM PC BOARD THICKNESS = 1.50mm.
- △ COMPANY LOGO IN APPROXIMATE AREA SHOWN.
- △ BOX WILL CONTAIN TRAYS OF CAGES AND TRAYS OF LIGHT PIPE ASSEMBLIES.
- △ BOX WILL CONTAIN TRAYS OF CAGES AND TRAYS OF LIGHT PIPE ASSEMBLIES. ONE TRAY OF CAGE AND ONE TRAY OF LIGHT PIPE ASSEMBLIES WILL BE HELD BY A LARGE RUBBER BAND.

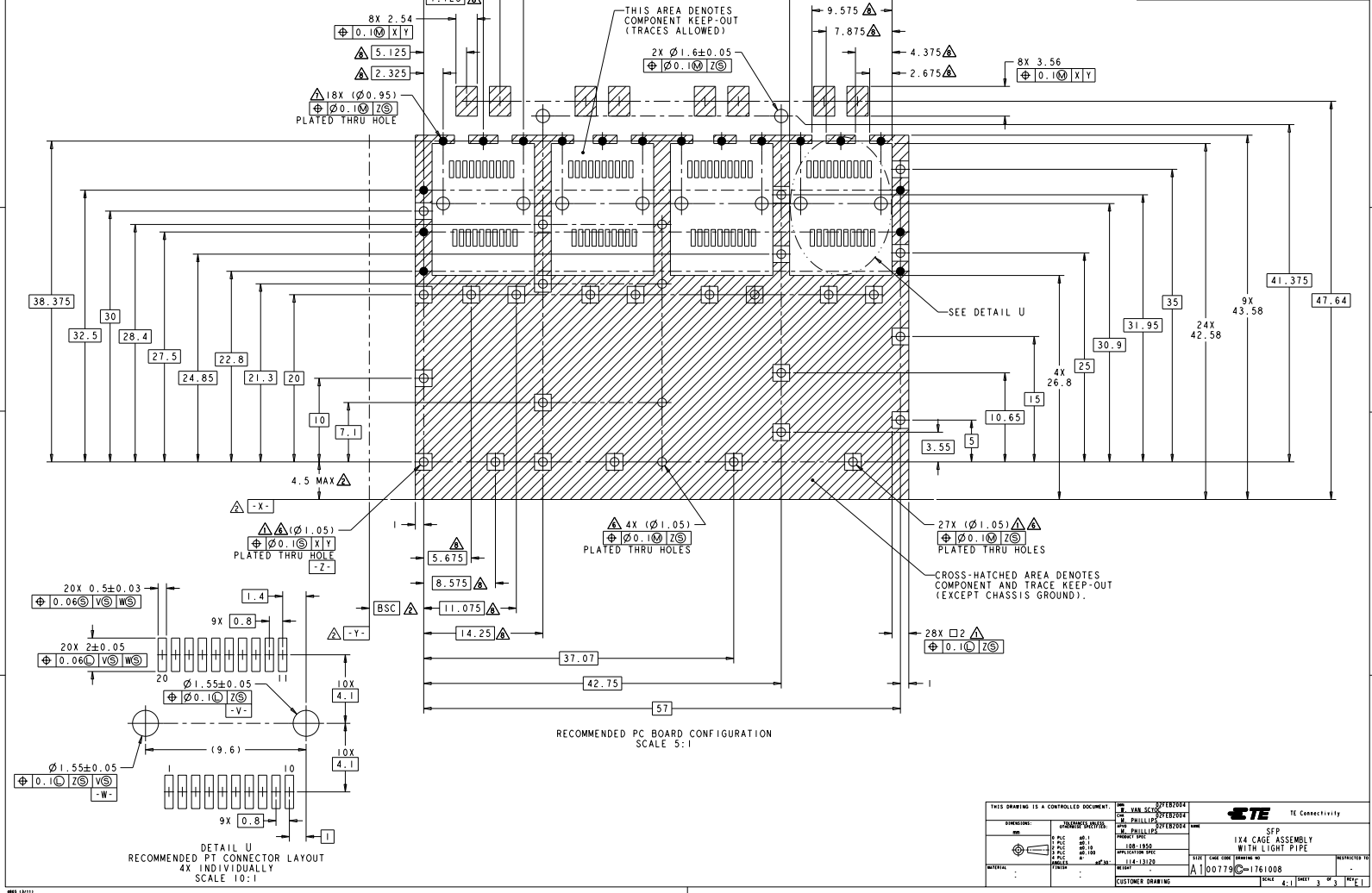
△	1X4 ASSEMBLY	1761008-2
△	1X4 ASSEMBLY	1761008-1
PACKAGE	DESCRIPTION	PART NO.
STE TE Connectivity		
DESIGNING: mm	DATE: 02/20/04	REV: 00
DRW: mm	DATE: 02/20/04	REV: 00
CHK: mm	DATE: 02/20/04	REV: 00
APP: mm	DATE: 02/20/04	REV: 00
DATE: 11/11/11	SCALE CODE: 2:1	REVISIONS TO: -
STY: A	ECO CODE: 00779	ECO: 1761008
CUSTOMER DRAWING		

REV	DATE	DESCRIPTION	BY	CHK
00		SEE SHEET 1		



THIS DRAWING IS A CONTROLLED DOCUMENT.		REV. 00	DATE 2004 FEB 20	TE Connectivity
DESIGNED BY	PHILLIPS	REV. 00	DATE 2004 FEB 20	
DATE	2004 FEB 20	REV. 00	DATE 2004 FEB 20	SFP 1X4 CAGE ASSEMBLY WITH LIGHT PIPE
REV. 00	DATE 2004 FEB 20	REV. 00	DATE 2004 FEB 20	
REV. 00	DATE 2004 FEB 20	REV. 00	DATE 2004 FEB 20	STATE CASE CODE (DRAWING NO) 116-13120
REV. 00	DATE 2004 FEB 20	REV. 00	DATE 2004 FEB 20	PART NO. 00779-1761008
REV. 00	DATE 2004 FEB 20	REV. 00	DATE 2004 FEB 20	CUSTOMER DRAWING PAGE 4 OF 3 SHEET 1

REV	DATE	DESCRIPTION	BY	CHK
00		SEE SHEET 1		



THIS DRAWING IS A CONTROLLED DOCUMENT.		REV. 02/20/2004	TE Connectivity
DESIGNED BY:	PHILLIPS	02/20/2004	
DRAWN BY:	PHILLIPS	02/20/2004	SFP 1X4 CAGE ASSEMBLY WITH LIGHT PIPE
CHECKED BY:	PHILLIPS	02/20/2004	
DATE:	02/20/2004	108-1950	STATE CASE CODE (SEARCH NO) A 00779 1761008
REV. NO.:	001	114-13120	
REV. DATE:	02/20/2004		CUSTOMER DRAWING SHEET 4 OF 3 PAGE 1