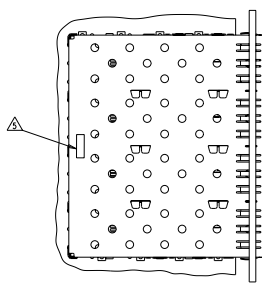
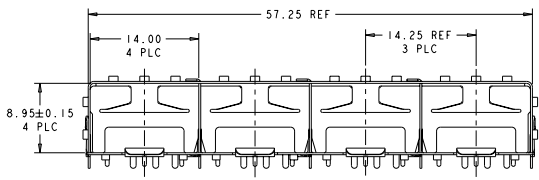
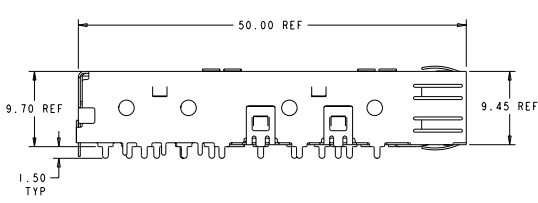
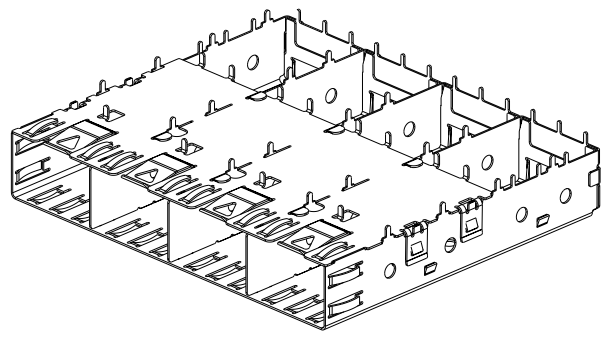
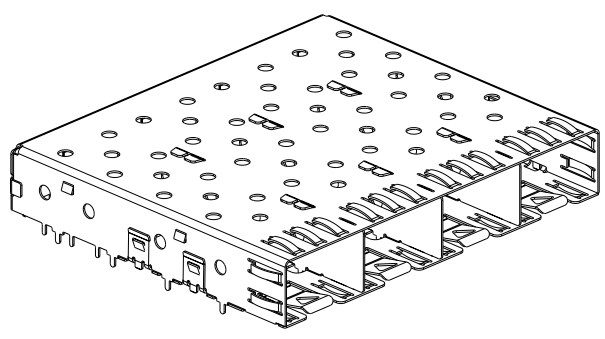


DATE SHOWN IN DIMENSIONS: 7/15/2010
 RECEIVED FOR FABRICATION: 7/15/2010
 BY: TERRY ELECTRONICS COMPANY, ALL RIGHTS RESERVED

REV. NO.		REVISIONS			
DATE	BY	DESCRIPTION	DATE	BY	APP.
D	00	ECO-10-015550			



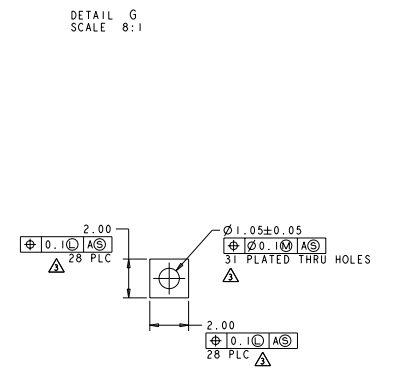
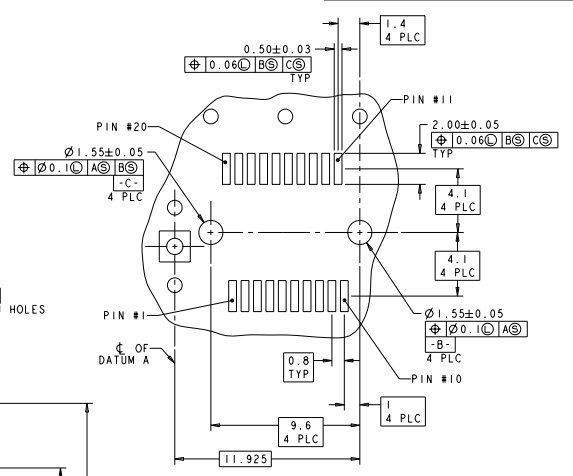
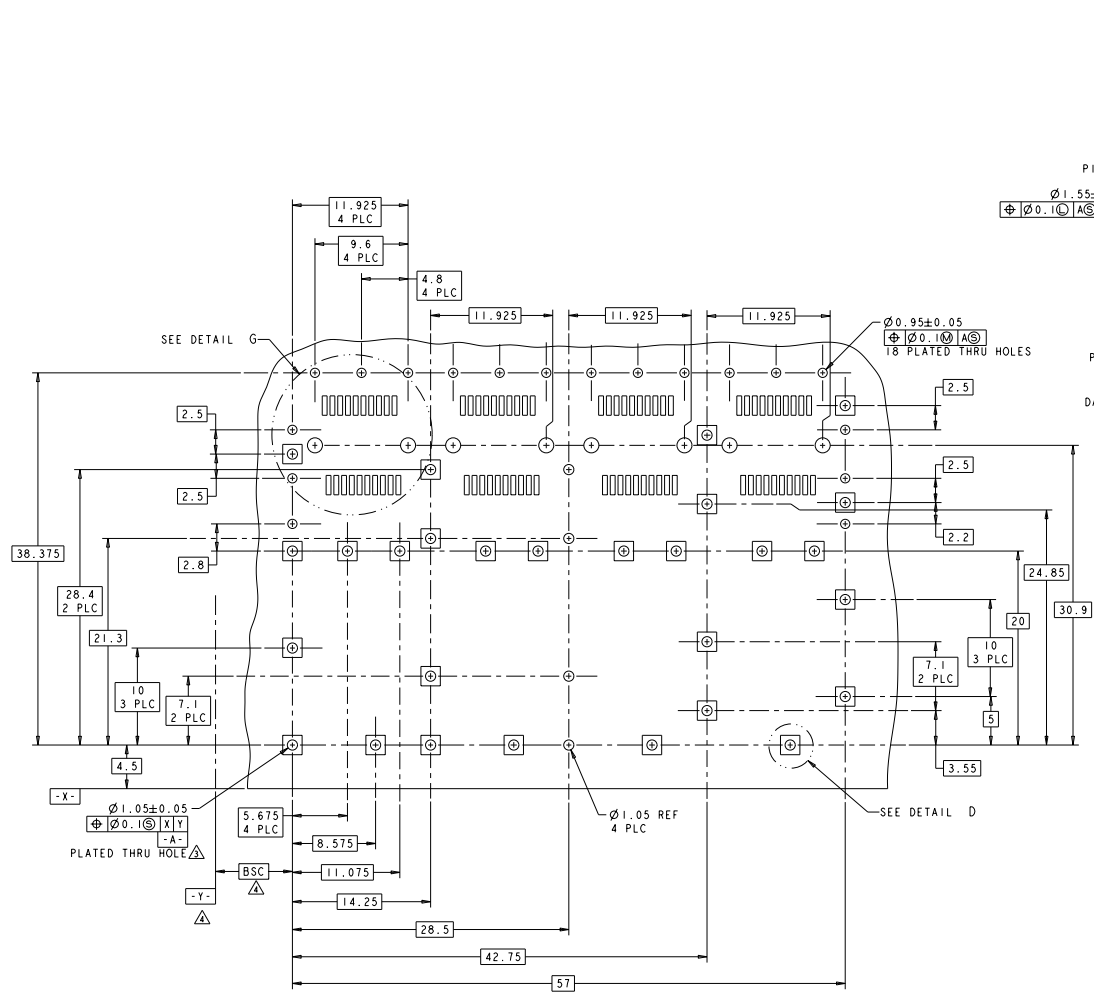
- △ MATERIAL: 0.25 THICK COPPER ALLOY.
- △ FINISH: 1.25µm MINIMUM TIN PER ASTM B 545 OVER NICKEL FLASH PER QQ-N-290. NONPLATED EDGES PERMISSIBLE.
- △ PADS AND VIAS CHASSIS GROUND.
- △ DATUM AND BASIC DIMENSION ESTABLISHED BY CUSTOMER.
- △ COMPANY LOGO IN APPROXIMATE AREA SHOWN.

SCALE 2:1

1658723-1
 PART NUMBER

TERRY ELECTRONICS COMPANY		TERRY ELECTRONICS COMPANY		TERRY ELECTRONICS COMPANY	
DESIGNED BY	DATE	DESIGNED BY	DATE	DESIGNED BY	DATE
DR	7/15/2010	DR	7/15/2010	DR	7/15/2010
CHECKED BY	DATE	CHECKED BY	DATE	CHECKED BY	DATE
DR	7/15/2010	DR	7/15/2010	DR	7/15/2010
APPROVED BY	DATE	APPROVED BY	DATE	APPROVED BY	DATE
DR	7/15/2010	DR	7/15/2010	DR	7/15/2010
CUSTOMER DRAWING		CUSTOMER DRAWING		CUSTOMER DRAWING	
TERRY ELECTRONICS COMPANY		TERRY ELECTRONICS COMPANY		TERRY ELECTRONICS COMPANY	
1658723-1		1658723-1		1658723-1	
CAGE ASSEMBLY, SOLDER LEG, 1X4, SFP		CAGE ASSEMBLY, SOLDER LEG, 1X4, SFP		CAGE ASSEMBLY, SOLDER LEG, 1X4, SFP	
A		A		A	
00778		00778		00778	
1658723		1658723		1658723	
PAGE 1		PAGE 1		PAGE 1	
1		1		1	
1		1		1	
1		1		1	

REV	DATE	REVISIONS	BY	CHK	APP
GP	00	SEE SHEET 1			



DATE: 00/00/00	BY: GP	CHK: GP	APP: GP	DATE: 00/00/00	BY: GP	CHK: GP	APP: GP
TITLE: CAGE ASSEMBLY, SOLDER LEG, 1X4, SFP CUSTOMER DRAWING: A 00778 ©-1658723				DATE: 00/00/00 BY: GP CHK: GP APP: GP			