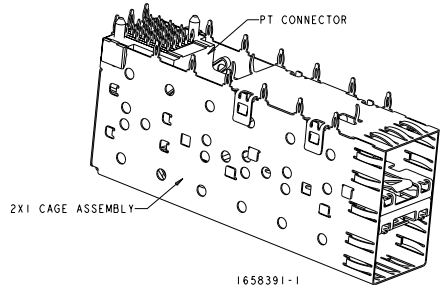
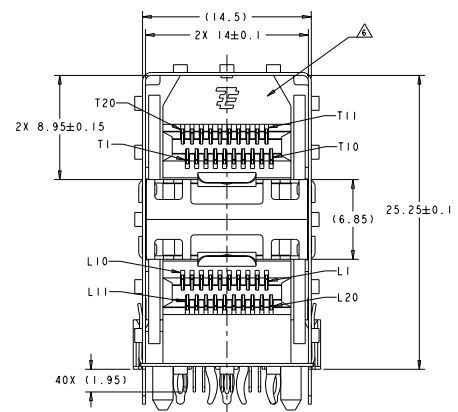
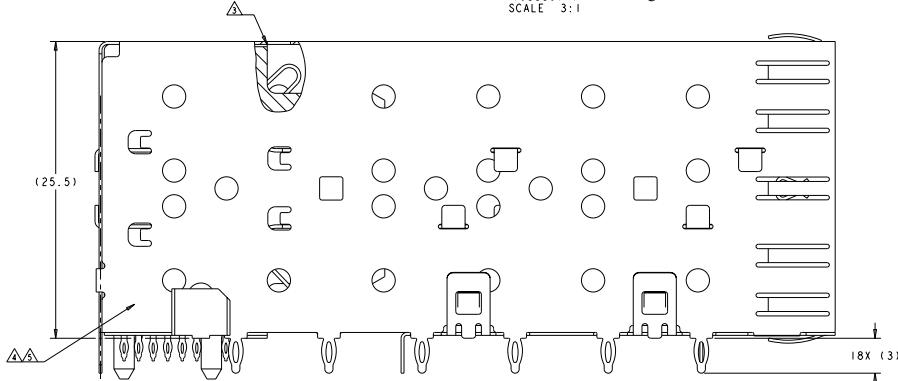


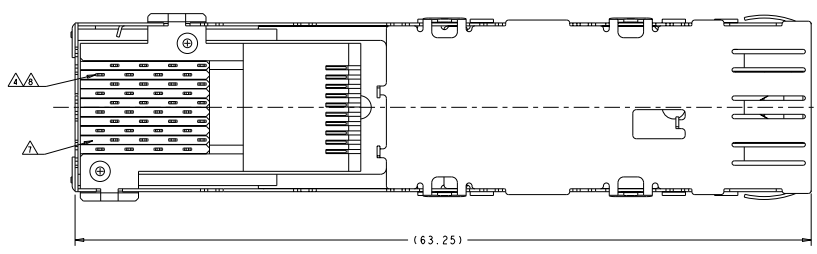
REV	DATE	DESCRIPTION	BY	CHK	APP
E	REVISED PER ECR-07-018402		000000	SL	SY
E1	REVISED ECR-08-013164		000000	AZ	SY
E2	REVISED ECR-08-024008		000000	AZ	SY
F	REVISED PER ECO-10-023688		000000	JT	CF



1658391-1
 SCALE 3:1



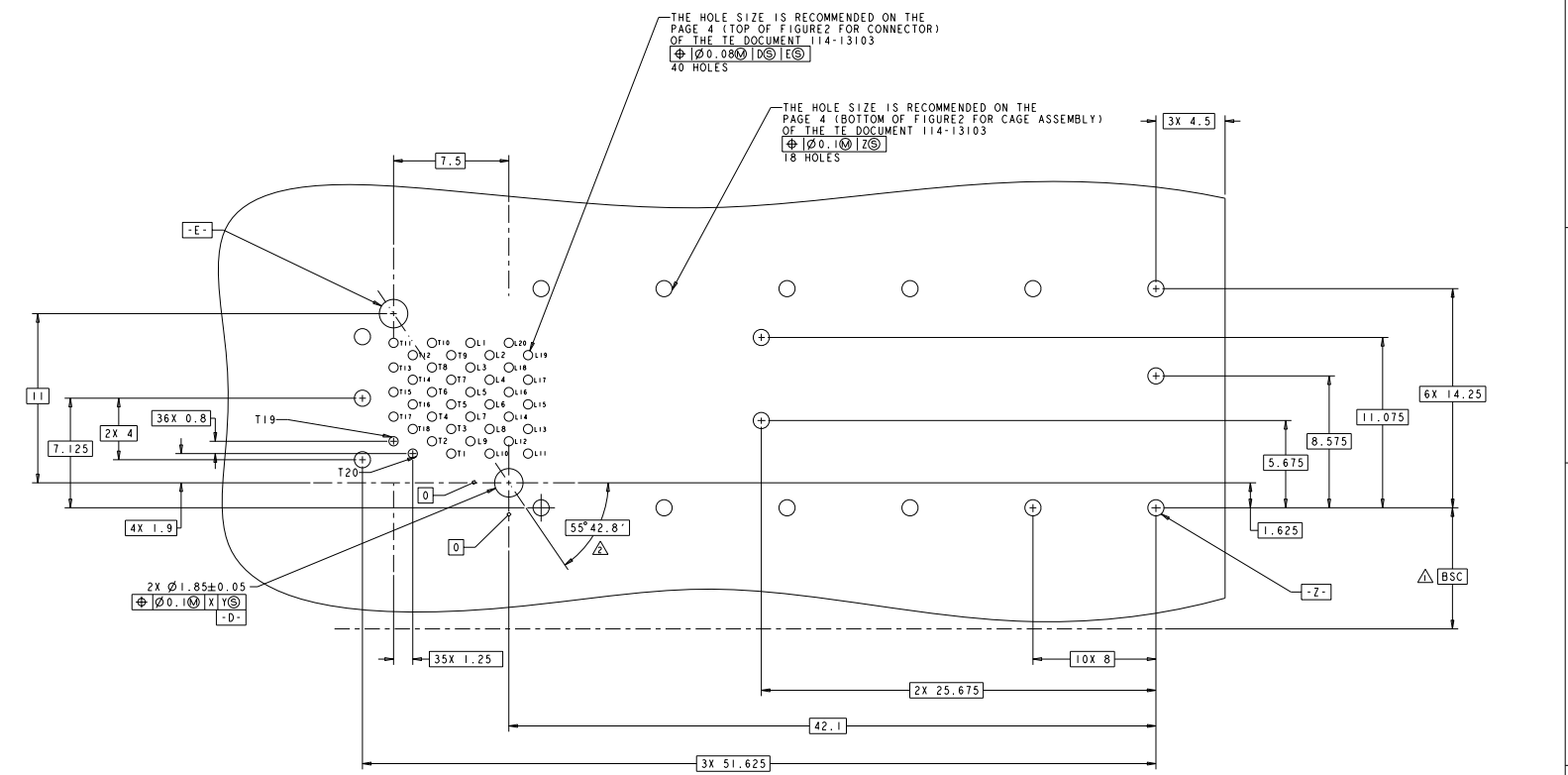
- △ DATUM AND BASIC DIMENSION TO BE DETERMINED BY CUSTOMER.
- △ INTERPRETATION OF DATUM REFERENCE FRAME IN ACCORDANCE WITH SECT 4.4.1.1 OF ASME Y14.5M-1994.
- △ TOP OF PT CONNECTOR TO BE 0-0.15 FROM INSIDE SURFACE OF CAGE.
- △ COPPER ALLOY.
- △ 1.25um MIN TIN PER ASTM B 545 OVER NICKEL FLASH PER QQ-N-290. NON-PLATED EDGES PERMISSIBLE.
- △ LCP, HIGH TEMPERATURE, UL 94V-0 RATED, BLACK.
- △ POLYESTER, UL 94V-0 RATED, BLACK.
- △ CONTACT MATING AREA: SURFACE TREATMENT OVER 0.76um MIN GOLD PER ASTM B 488 OVER 1.27um MIN NICKEL PER QQ-N-290. NEEDLE EYE: 1.25um MIN TIN PER ASTM B 545 OVER 1.27um MIN NICKEL PER QQ-N-290. REMAINDER OF CONTACT: 0.76um MIN NICKEL PER QQ-N-290.



1658391-1
 PART NUMBER

REVISED PER ECR-07-018402	DATE	25MAR03	BY	000000	CHK	000000	APP	000000
REVISED PER ECR-08-013164	DATE	23JAN04	BY	000000	CHK	000000	APP	000000
REVISED PER ECR-08-024008	DATE	23JAN04	BY	000000	CHK	000000	APP	000000
REVISED PER ECO-10-023688	DATE	11E-13103	BY	000000	CHK	000000	APP	000000
CUSTOMER DRAWING	DATE	00778	BY	000000	CHK	000000	APP	000000

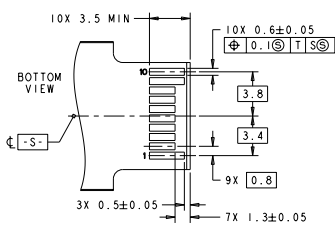
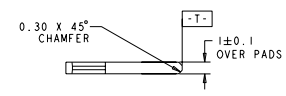
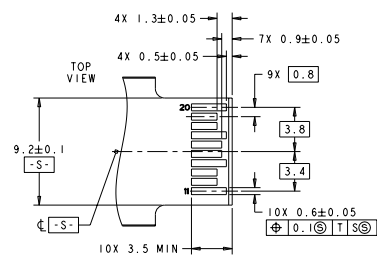
REVISOR		REVISIONS	
NO.	DATE	DESCRIPTION	BY
ES	00	SEE SHEET 1	



SFP HOST BOARD
MECHANICAL LAYOUT
SCALE 8:1

COMPANY	25MAR03	TYPE ELECTRONICS
DESIGNED BY	23JAN02	Shanghai, China
APPROVED BY		
DRAWN BY		
CHECKED BY		
DATE	11-6-13103	STATE CODE
PROJECT		00778
ISSUE		
CUSTOMER DRAWING		1658391

REV	DATE	REVISIONS	BY	CHK	APP
00	ES	SEE SHEET 1			



RECOMMENDED LAYOUT FOR
MATING TRANSCEIVER PCB
SCALE 6:1

上海华通电子有限公司 SHANGHAI HUATONG ELECTRONICS CO., LTD. NO. 1000, CHANGJIANG ROAD, SHANGHAI, CHINA		25MAR03 23JAN02 23JAN02		Type Electronics Shanghai, China	
图号: 168-2181 物料名称: 2x1, PRESS FIT, STANDARD PROFILE, SFP 物料描述: 114-13103	图号: 168-2181 物料名称: 2x1, PRESS FIT, STANDARD PROFILE, SFP 物料描述: 114-13103	图号: 168-2181 物料名称: 2x1, PRESS FIT, STANDARD PROFILE, SFP 物料描述: 114-13103	图号: 168-2181 物料名称: 2x1, PRESS FIT, STANDARD PROFILE, SFP 物料描述: 114-13103	图号: 168-2181 物料名称: 2x1, PRESS FIT, STANDARD PROFILE, SFP 物料描述: 114-13103	图号: 168-2181 物料名称: 2x1, PRESS FIT, STANDARD PROFILE, SFP 物料描述: 114-13103
CUSTOMER DRAWING		A		00778 ©1658391	
		PAGE 1		OF 3	