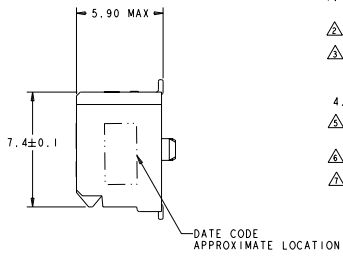
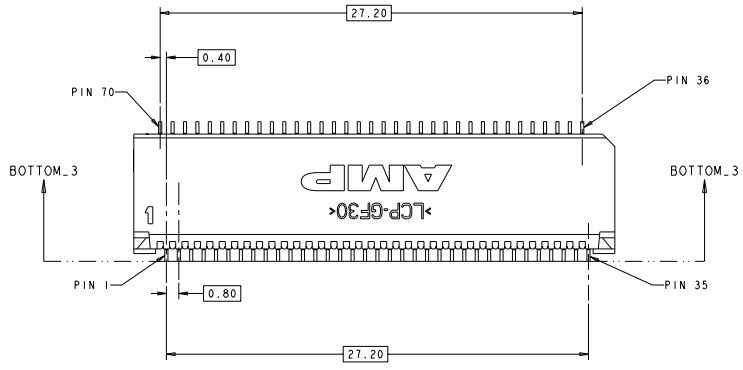
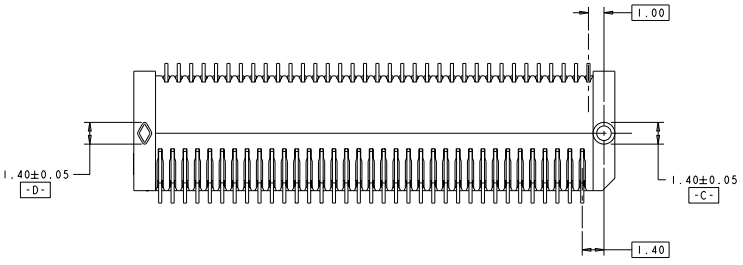
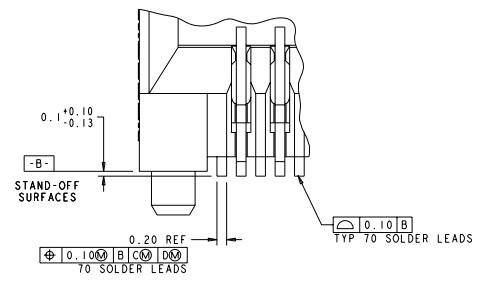
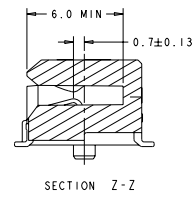
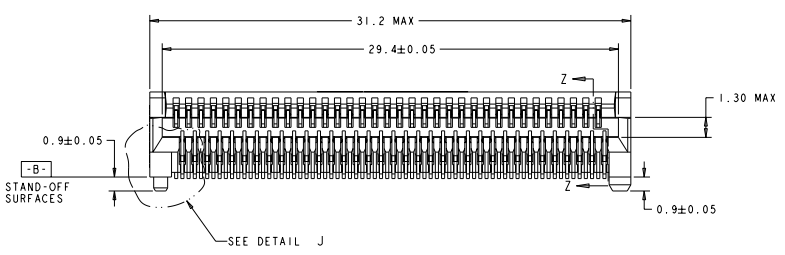
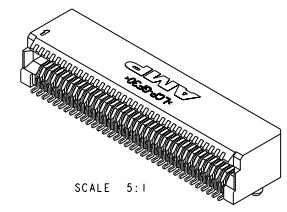


REV	DATE	DESCRIPTION	BY	CHK	APP
01		REVISED PER ECR-10-024848	1002CMB	KS	MO, R
02		ECR-10-025175	1702CMB	KS	MO, R
03		ECR-11-001132	2504MB1	KS	MO, R



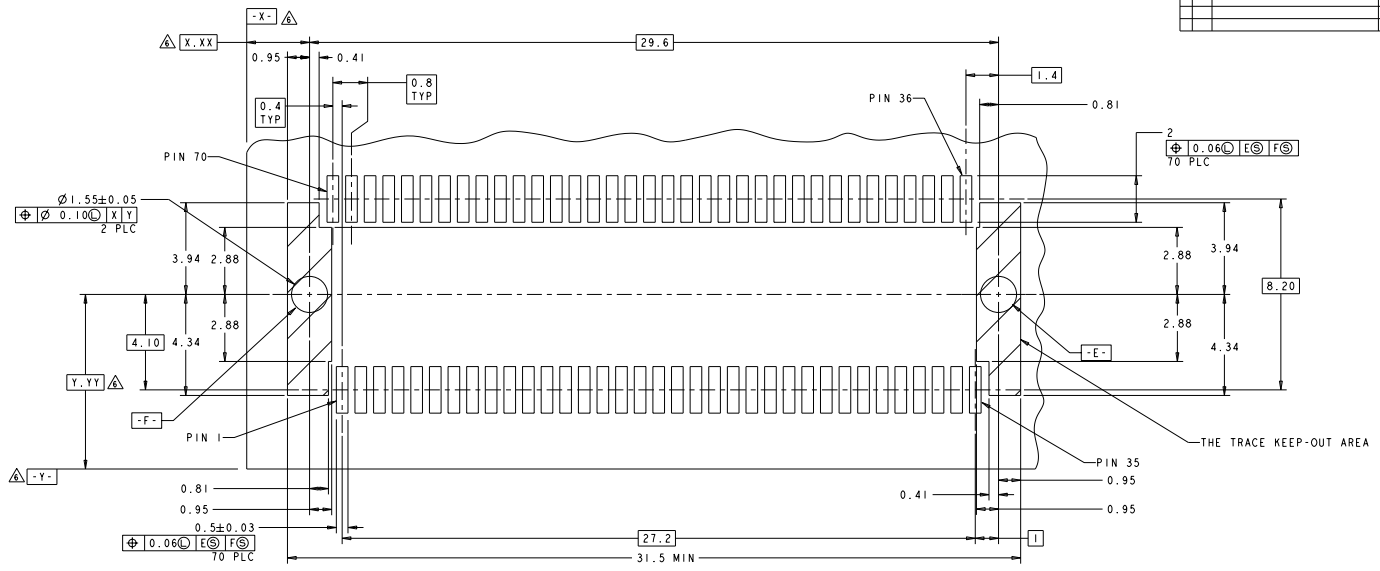
- PART COMPATIBLE KEMPAK & X2 MSA. REFER TO THESE MSA'S FOR DIMENSIONS NOT SHOWN ON THIS PRINT.
- HOUSING: HIGH TEMPERATURE LCP, UL 94V-0 RATED, BLACK.
- CONTACTS: 0.00038 MIN GOLD IN CONTACT AREA, 0.00013 MIN GOLD ON SOLDER AREA, OVER 0.0038 MIN NICKEL UNDERPLATE ON ENTIRE CONTACT.
- PACKAGED 480 PIECES PER REEL.
- GROUND, POWER AND SIGNAL PAD ARRANGEMENT TO BE DETERMINED BY CUSTOMER.
- DATUMS AND BASIC DIMENSIONS ESTABLISHED BY CUSTOMER.
- CONTACTS: 0.00076 MIN GOLD IN CONTACT AREA, 0.00013 MIN GOLD ON SOLDER AREA, OVER 0.0038 MIN NICKEL UNDERPLATE ON ENTIRE CONTACT.



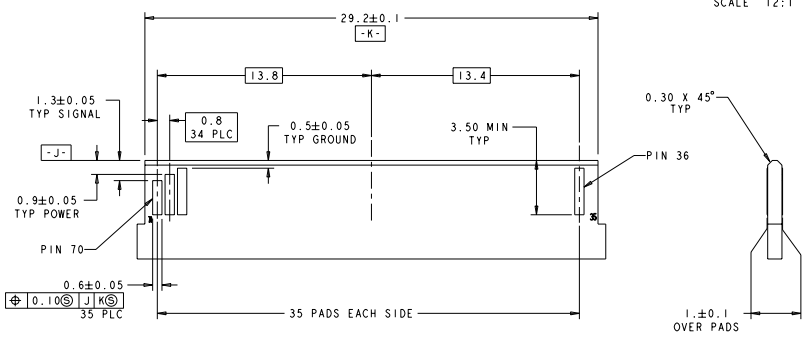
YES	△	1367337-4
YES	△	1367337-3
NO	△	1367337-2
NO	△	1367337-1
DATE CODE	FINISH	PART NUMBER

SYMBOL	DESCRIPTION	UNIT	VALUE	SYMBOL	DESCRIPTION	UNIT	VALUE
□	LENGTH	MM	27.20	□	CONTACT PITCH	MM	0.40
□	WIDTH	MM	5.90	□	CONTACT HEIGHT	MM	1.30
□	HEIGHT	MM	7.4	□	CONTACT DIAMETER	MM	0.10
□	STAND-OFF	MM	0.9	□	LEAD DIAMETER	MM	1.40
□	LEAD SPACING	MM	1.00	□	LEAD LENGTH	MM	31.2

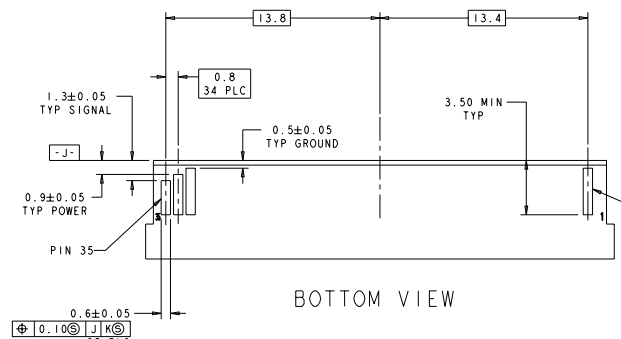
REV	DATE	DESCRIPTION	BY	CHK	APP
ES	00	SEE SHEET 1			



RECOMMENDED PCB LAYOUT DETAIL
 CONNECTOR MOUNTING SIDE
 SCALE 12:1



TOP VIEW



BOTTOM VIEW

RECOMMENDED LAYOUT DETAIL
 MATING PCB

TYPE NUMBER: 70 POS. CONNECTOR PART NUMBER: 100-13617 DATE: 00778 CUSTOMER DRAWING	ASSEMBLY: 70 POS. PT CONNECTOR ASSEMBLY, 70 POS. RIGHT ANGLE, 0.8mm PITCH DRAWN BY: 100-13617 CHECKED BY: 100-13617 DATE: 00778 CUSTOMER DRAWING	TYPE ELECTRONICS CORPORATION Skaneateles, P.O. Box 200230
---	--	--