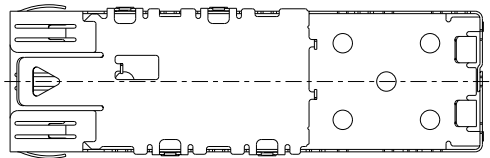
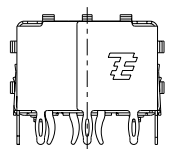
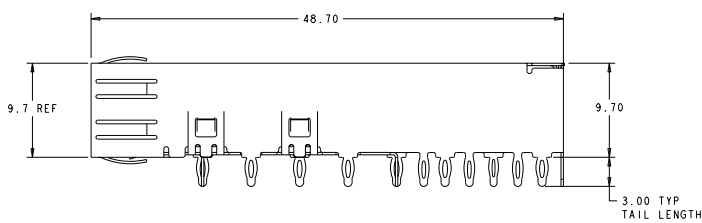
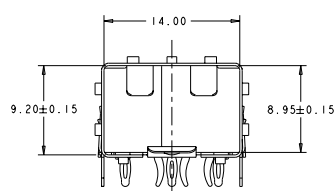
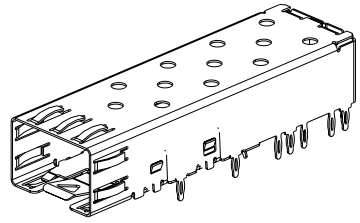
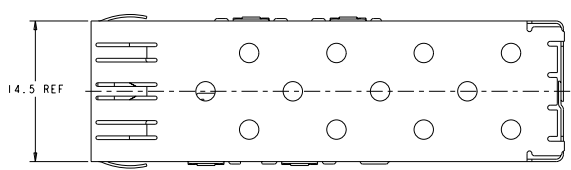


REV	DATE	DESCRIPTION	BY	CHKD	APPD
C1		REVISED PER ECO-05-014491	JAFMAN	BM	SS
C2		REVISED PER ECO-07-025198	MCCHEE	TZ	SY



- △ MATERIAL: 0.25 THICK COPPER ALLOY.
- △ FINISH: TIN. NONPLATED EDGES PERMISSIBLE.
- 3. SFP MSA COMPATIBLE.
- △ PADS AND VIAS CHASSIS GROUND.
- △ DATUM AND BASIC DIMENSION ESTABLISHED BY CUSTOMER.
- 6. MINIMUM PCB BOARD THICKNESS:
 SINGLE SIDED= 1.45
 DOUBLE SIDED STAGGERED= 3.00

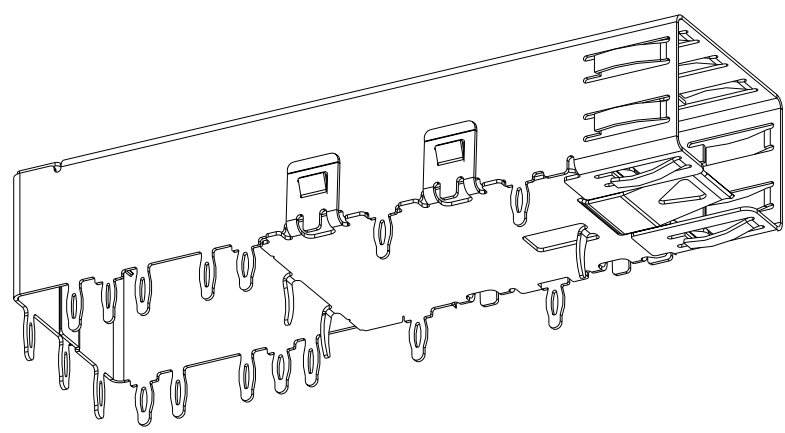
Copyright 2002
 Tyco Electronics Corp
 All Rights Reserved

AS SHOWN	1489779-1
DESCRIPTION	PART NUMBER

REV	DATE	DESCRIPTION	BY	CHKD	APPD
A		CUSTOMER DRAWING			

8 7 6 5 4 3 2 1
 ALL RIGHTS RESERVED
 ALL RIGHTS RESERVED
 ALL RIGHTS RESERVED

REVISED		REVISIONS			
NO.	DATE	BY	DESCRIPTION	DATE	BY
GP	00		SEE SHEET 1		

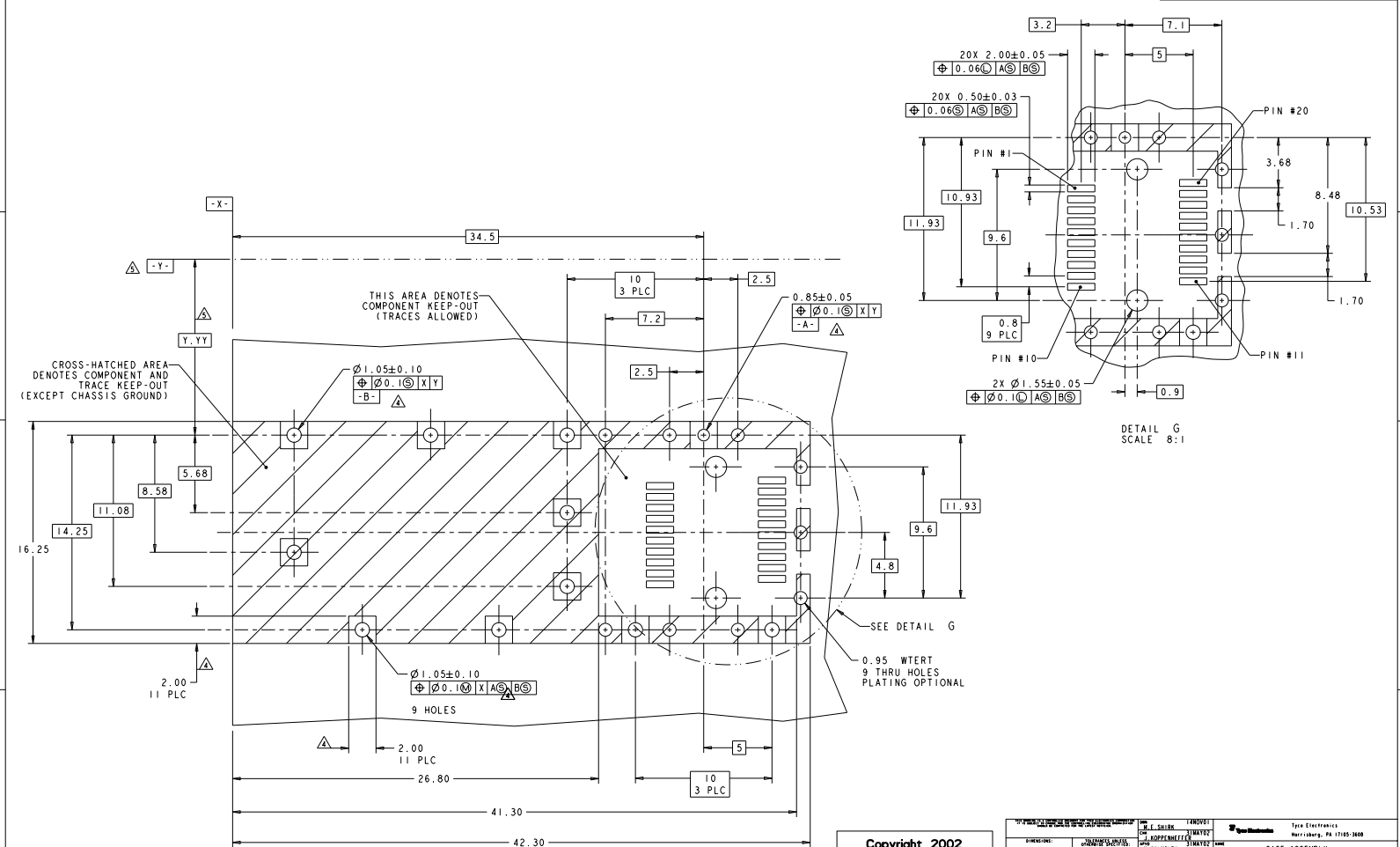


SCALE 8:1

Copyright 2002
 Tyco Electronics Corp
 All Rights Reserved

TITLE: CAGE ASSEMBLY, 20 PRESS FIT, SFP PART NO: 1489779 REV: A		DATE: 05/11/02 DRAWN BY: [Signature] CHECKED BY: [Signature]	
CUSTOMER DRAWING		SHEET 2 OF 3	

REV	DATE	DESCRIPTION	BY	CHK
00		SEE SHEET 1		



RECOMMENDED PCB LAYOUT
SCALE 8:1

Copyright 2002
Tyco Electronics Corp
All Rights Reserved

REV: 00	DATE: 04/24/02	BY: TICO ELECTRONICS CORPORATION	CHK: TICO ELECTRONICS CORPORATION
DESCRIPTION: CAGE ASSEMBLY, 20 PRESS FIT, SFP		PART NUMBER: 00779	
DRAWN BY: TICO ELECTRONICS CORPORATION		CHECKED BY: TICO ELECTRONICS CORPORATION	
DATE: 04/24/02		SCALE: 8:1	
SHEET: 3		TOTAL SHEETS: 3	