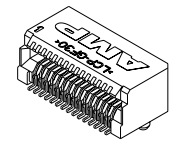
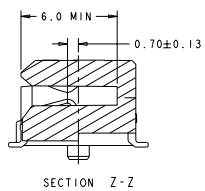
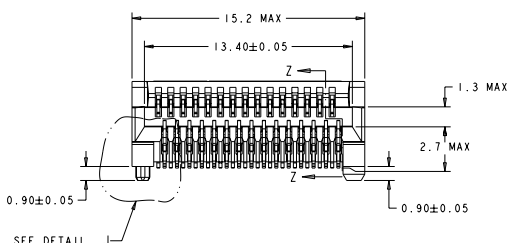
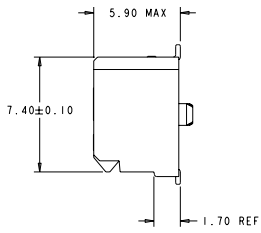
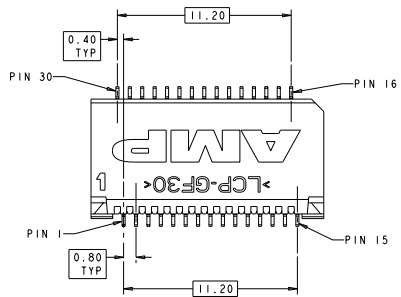
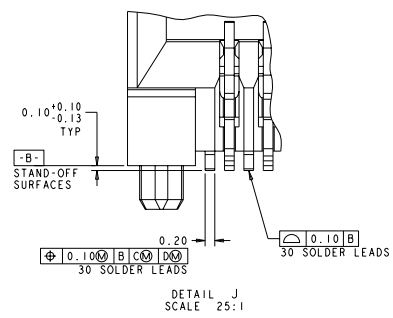


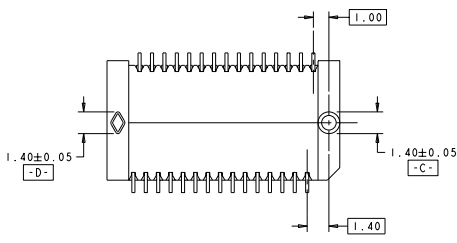
REV	DATE	DESCRIPTION	BY	CHK	APP
D	00	REVISED PER EC 0513-0220-05	JAYRAM	DM	SS
E		REVISED PER ECO-95-011603	1909M	DM	SS
F		REVISED PER ECR-01-000140	JAYRAM	ML	ST
G		REVISED PER ECR-07-025532	DMCHAI	LL	ST



SCALE 5:1



SCALE 25:1



- PART COMPATIBLE WITH XFP MSA. REFER TO THE SFP MSA FOR DIMENSIONS NOT SHOWN ON THIS PRINT.
- HOUSING: HIGH TEMPERATURE LCP, UL 94V-0 RATED, BLACK. CONTACT: PHOSPHOR BRONZE.
- CONTACTS: 0.00038 MIN GOLD IN CONTACT AREA, 0.00013 MIN GOLD ON SOLDER AREA, OVER 0.0038 MIN NICKEL UNDERPLATE ON ENTIRE CONTACT.
- PACKAGED PIECES PER REEL.
- GROUND, POWER AND SIGNAL PAD ARRANGEMENT TO BE DETERMINED BY CUSTOMER.
- DATUMS AND BASIC DIMENSIONS ESTABLISHED BY CUSTOMER.
- CONTACTS: 0.00076 MIN GOLD IN CONTACT AREA, 0.00013 MIN GOLD ON SOLDER AREA, OVER 0.0038 MIN NICKEL UNDERPLATE ON ENTIRE CONTACT.
- SOLDER MASK KEEP OUT AREA.
- CONTACTS: 0.00127 MIN GOLD IN CONTACT AREA, 0.00013 MIN GOLD ON SOLDER AREA, OVER 0.0038 MIN NICKEL UNDERPLATE ON ENTIRE CONTACT.

FINISH	PART NUMBER
△	788862-3
△	788862-2
△	788862-1

SYMBOL	DESCRIPTION	STANDARD	DATE	BY	CHK	APP
△	SEE TABLE					

REV	DATE	DESCRIPTION	BY	CHK	APP
A	00779	788862			

