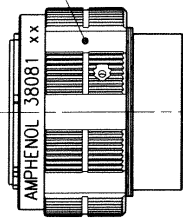
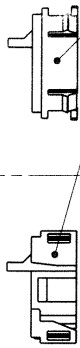


DANS LE BUT CONSTANT D'AMELIORER SES PRODUITS, Amphenol Socapex SE RESERVE LE DROIT D'EN MODIFIER TOUTE COTE OU CARACTERISTIQUE.
[IMP. 007 B]

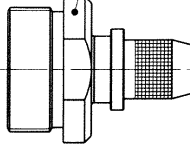
PLUG BODY



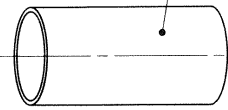
2 INSERTS



BACKSHELL BODY



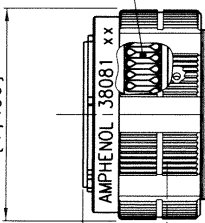
HEAT-SHRINK SLEEVE



BAND



SPRING FINGERS



$\phi 28$
[1,102]

RJF SFTP $\phi 7$ CABLE

$\phi 38$
[1,496]

15,01
[.591]

39
[1,535]

RECEPTACLE STOP

kit 38081 (RJF TV 6 35 G type)

APPROBATION CLIENT
CUSTOMER APPROVAL

MODIFICATIONS	A	Plan original	ECHELLE

Amphenol Socapex
BP 29 - 74311 THYEZ CEDEX

DESSIN:	TUPIN	LE: 16/03/04
TECHNIQUE:	Y. Guillo	03-16-04
A		
190-PLC-054-00		1/1