

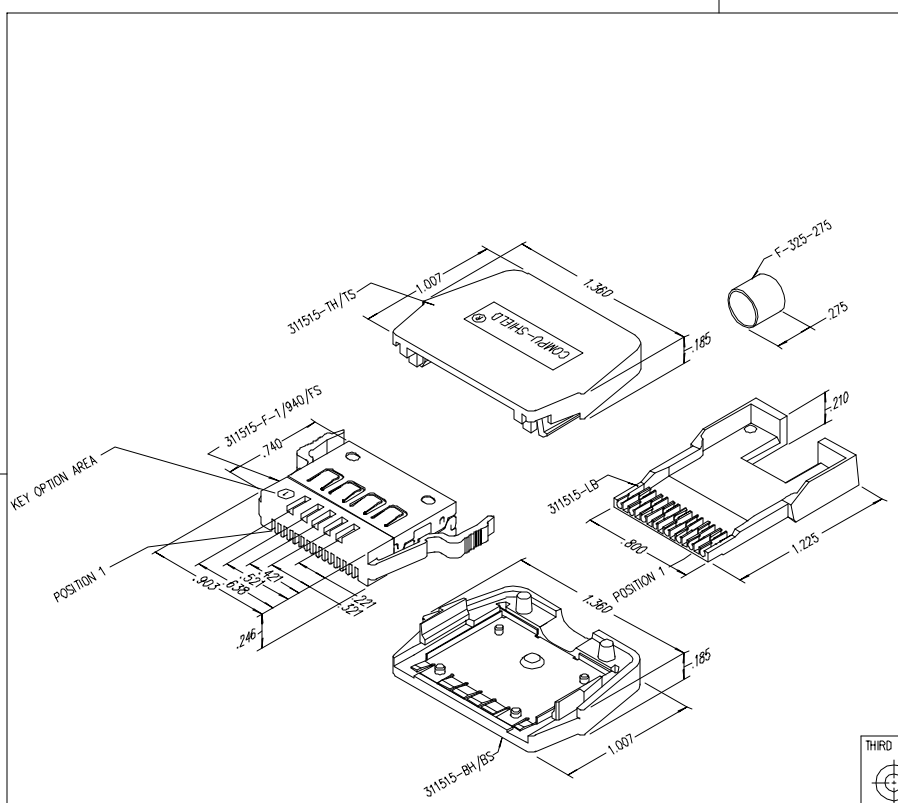
2

1

DATE	REV	EON	APP'D. BY
1/31/06	A2	7461	JM
2-23-06	A3	7515	JM

B

B



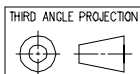
NOTES:

1. PLUG MATERIALS:
TOP/BOTTOM HOUSING: PC UL94 V-0 COLOR: BLACK
FRONT PLASTIC: PC UL94 V-0 COLOR: BLUE
LOAD BAR: THERMOPLASTIC UL94 V-0 COLOR: CLEAR
CONTACTS/SHIELD: COPPER ALLOY
SHIELD/FERRULE PLATING: TIN
CONTACT PLATING: SELECTIVE GOLD IN CONTACT AREA
SEE CHART FOR PART NUMBER
2. CONTACTS TERMINATE SOLID OR STRANDED CONDUCTORS UP TO .042" OUTSIDE DIAMETER OF INSULATION
3. TOLERANCES COMPLY WITH F.C.C. DIMENSION REQUIREMENTS.
4. HOUSING WILL ACCEPT CABLE UP TO .290" OUTSIDE DIAMETER OF JACKET
5. FOR PRODUCT SPECIFICATIONS SEE PRO26-01
6. TERMINATED PLUG HEIGHT .234±.002

50 MICRO-INCHES [1.27um]	SS-311515-1
CONTACT PLATING IN MATING AREA	PART NUMBER

A

A



DO NOT SCALE DRAWING
DRAWING IS SUBJECT TO CHANGE WITHOUT NOTICE.
DIMENSIONS: INCHES [METRIC]
UNLESS OTHERWISE SPECIFIED TOLERANCES ARE ±.005 [0.13]
ANGLES ARE ± 1°
SHEET NO. 1 OF 1



Bel Stewart Connector
11118 Susquehanna Trail South
Glen Rock, PA 17327-9199
(717) 235-7512 Fax: (717) 235-7954 <http://www.stewartconnector.com>

TITLE: 15X15 COMPU-SHIELD PLUG FINAL ASSEMBLY
DWN BY: KRL DATE: 1/31/06
APP'D BY: JM DATE: 2-1-06
DWG NO: CT310016 REV: A3

AutoCAD

2

1

REV. 6/5/05