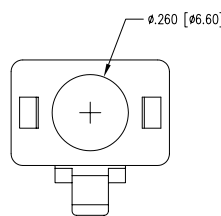
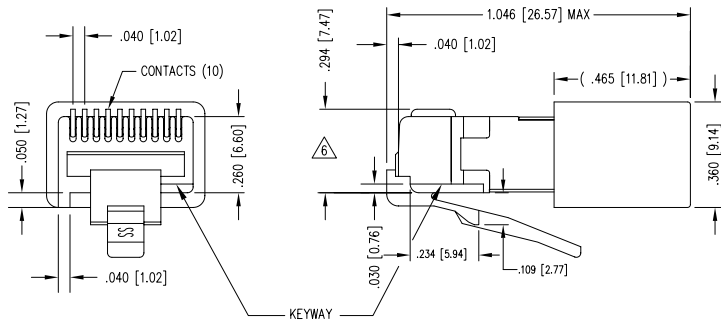
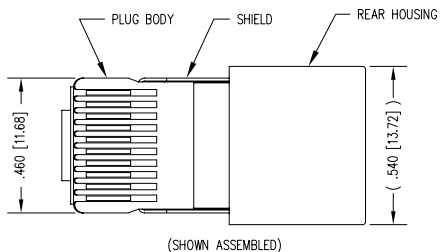


2

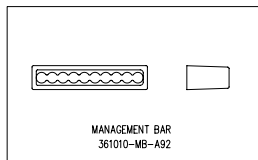
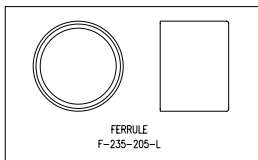
1

| DATE | REV | ECN | APP'D. BY |
|----------|-----|------|-----------|
| 00-00-00 | X0 | - | - |
| 03-10-04 | A0 | 6351 | JMB |
| 1-19-06 | A1 | 7441 | JM |

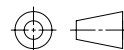


- NOTES:
- 1- PLUG KIT CONSISTS OF :
PRE-INSERTED PLUG HOUSING & SHIELD
MANAGEMENT BAR
FERRULE
 - 2- MATERIALS :
FRONT HOUSING PLASTIC : CLEAR POLYCARBONATE, UL 94-V0
MANAGEMENT BAR : CLEAR POLYCARBONATE, UL 94-V0
SHIELD : TIN PLATED BRASS
CONTACTS : PHOSPHOR BRONZE, SELECTIVE GOLD PLATING
FERRULE : TIN PLATED BRASS
 - 3- CONTACTS TERMINATE STRANDED CONDUCTORS UP TO .037 [0.94] OUTSIDE DIAMETER OF INSULATION.
 - 4- FOR PLUG SPECIFICATION SEE PRO26-01.
 - 5- TOLERANCES COMPLY WITH F.C.C. DIMENSION REQUIREMENTS.
- △ TERMINATED PLUG HEIGHT: .237 [6.02] ± .005 [0.13]

| | | |
|---------|--------------------------------|-------------------------|
| BULK | 50 MICRO-INCHES [1.27um] | 940-SP-361010-RMK4-A161 |
| PACKAGE | CONTACT PLATING IN MATING AREA | PART NUMBER |



THIRD ANGLE PROJECTION



Bel Stewart Connector

11118 Susquehanna Trail South
Glen Rock, PA 17327-9199
(717) 235-7512 Fax: (717) 235-7954 <http://www.stewartconnector.com>

DO NOT SCALE DRAWING
DRAWING IS SUBJECT TO
CHANGE WITHOUT NOTICE

TITLE: 10 X 10 SHIELDED PLUG

UNLESS OTHERWISE SPECIFIED
TOLERANCES ARE ±.005 [0.13]
ANGLES ARE ± 1°

| | | | |
|-----------|-----|-------|--------|
| DRN BY: | DB | DATE: | 3-8-99 |
| APP'D BY: | TRM | DATE: | 3-9-99 |

SHEET NO. 1 OF 1

| | | | |
|---------|----------|------|----|
| DWG NO. | CT360134 | REV. | A1 |
|---------|----------|------|----|

2

1

AutoCAD

REV. 7/5/03