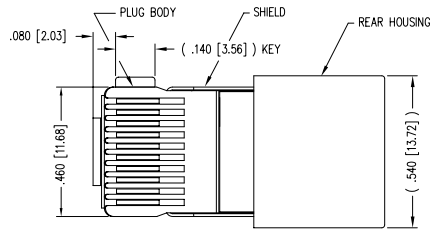
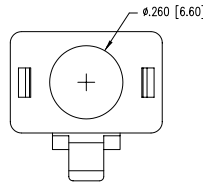
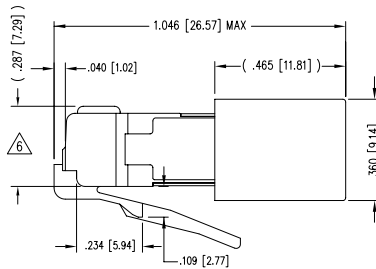
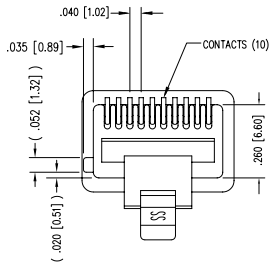


DATE	REV	ECN	APP'D. BY
12-13-07	A3	8310	JM
8/15/08	A4	8511	TA



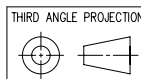
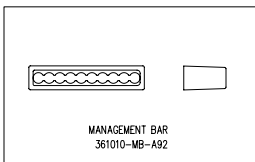
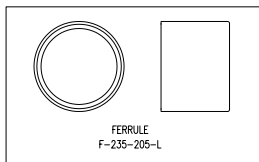
( SHOWN ASSEMBLED )



NOTES:

- 1- PLUG KIT CONSISTS OF :  
 PRE-INSERTED PLUG HOUSING & SHIELD  
 MANAGEMENT BAR  
 FERRULE
  - 2- MATERIALS :  
 FRONT HOUSING PLASTIC : CLEAR POLYCARBONATE, UL 94-V0  
 MANAGEMENT BAR : CLEAR POLYCARBONATE, UL 94-V0  
 SHIELD : TIN PLATED BRASS  
 CONTACTS : PHOSPHOR BRONZE, SELECTIVE GOLD PLATING  
 FERRULE : TIN PLATED BRASS
  - 3- CONTACTS TERMINATE STRANDED CONDUCTORS UP TO .037 [0.94] OUTSIDE DIAMETER OF INSULATION.
  - 4- FOR PLUG SPECIFICATION SEE PRO26-01.
  - 5- DIMENSIONS AND TOLERANCES COMPLY WITH FCC/OFR 47, PART 68.
- △ TERMINATED PLUG HEIGHT: .237 [6.02] ± .005 [0.13]

BULK	50 MICRO-INCHES [1.27um]	937-SP-361010-K1-A161
PACKAGE	CONTACT PLATING IN MATING AREA	PART NUMBER



THIRD ANGLE PROJECTION  
 DO NOT SCALE DRAWING  
 DRAWING IS SUBJECT TO CHANGE WITHOUT NOTICE  
 UNLESS OTHERWISE SPECIFIED  
 TOLERANCES ARE ±.005 [0.13]  
 ANGLES ARE ± 1°  
 SHEET NO. 1 OF 1

## Bel Stewart Connector

11118 Susquehanna Trail South  
 Glen Rock, PA 17327-9199  
 (717) 235-7512 Fax: (717) 235-7954 <http://www.stewartconnector.com>

TITLE: 10 X 10 SHIELDED PLUG

DRN BY: RS	DATE: 3-3-95
APP'D BY: JW	DATE: 3-7-95
DWG NO: CT360098	REV: A4

AutoCAD

REV. 7/3/03