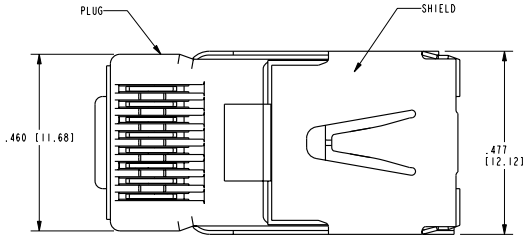


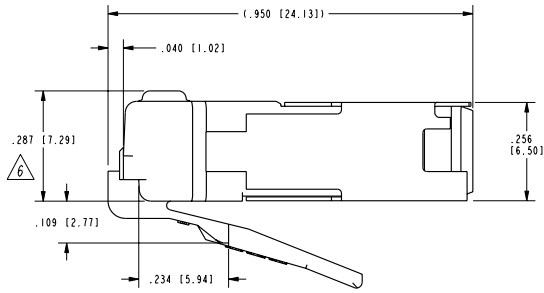
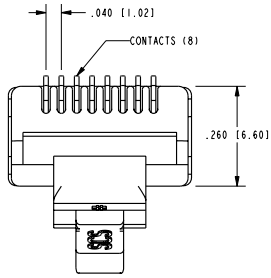
2

1

DATE	REV.	ECN	APP'D BY
1-23-06	A1	7441	JM
8-21-09	A2	8804	TRM

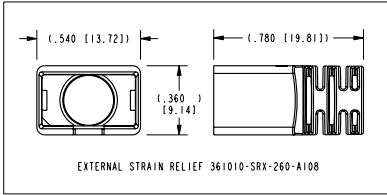
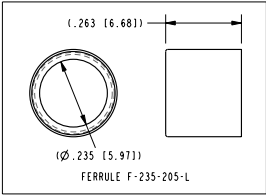


SHOWN IN ASSEMBLED STATE



- NOTES:
- 1- PLUG KIT CONSISTS OF:
PRE-INSERTED PLUG HOUSING & SHIELD
STRAIN RELIEF
FERRULE
 - 2- MATERIALS:
FRONT HOUSING PLASTIC: CLEAR POLYCARBONATE, UL 94-V0
STRAIN RELIEF: BLACK LEXAN, UL 94-V0
SHIELD: TIN PLATED BRASS
CONTACTS: PHOSPHOR BRONZE, SELECTIVE GOLD PLATING
FERRULE: TIN PLATED BRASS
 - 3- CONTACTS TERMINATE SOLID OR STRANDED CONDUCTORS BETWEEN
.037 [0.94] TO .042 [1.07] OUTSIDE DIAMETER OF INSULATION.
 - 4- PRODUCT SPECIFICATION: PRO26-01
 - 5- DIMENSIONS AND TOLERANCES COMPLY WITH FCC/CFR 47, PART 68.
 - 6- TERMINATED PLUG HEIGHT: .237 [6.02] ± .005 [0.13]

BULK	50 MICRO-INCHES [1.27um]	SS-37200-001
PACKAGE	CONTACT PLATING IN MATING AREA	PART NUMBER



THIRD ANGLE PROJECTION

DO NOT SCALE DRAWING
DRAWING IS SUBJECT TO CHANGE WITHOUT NOTICE

DIMENSIONS: INCHES (METRIC)

UNLESS OTHERWISE SPECIFIED
TOLERANCES ARE ± .005 [0.13]
ANGLES ARE ± 1°

SHEET NO. 1 OF 1

Bel Stewart Connector

11118 Susquehanna Trail South
Glen Rock, PA 17327-9199
(717) 235-7512 Fax: (717) 235-7954 <http://www.stewartconnector.com>

TITLE: 8 POSITION / 8 CONDUCTOR UNIBODY SHIELDED PLUG

DRN BY:	DAB	DATE	9-8-03
APP'D BY:	RGC	DATE	9-11-03
DWG. NO.	CT370044	REV.	A2

REV. 12/03

2

1

Pro/E