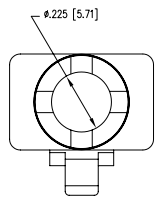
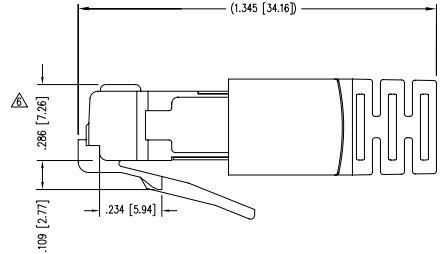
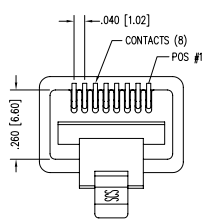
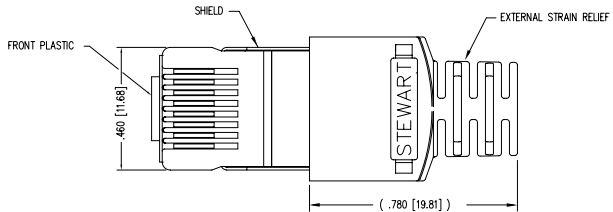
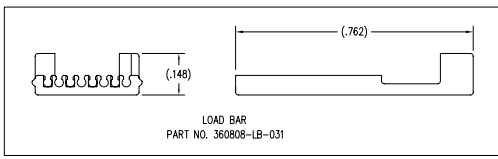
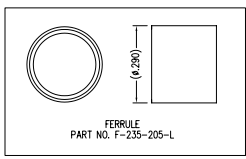


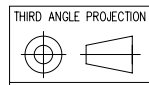
| DATE | REV | ECN | APP'D. BY |
|----------|-----|------|-----------|
| 1/30/06 | A1 | 7462 | JM |
| 3/31/06 | A2 | 7567 | TRM |
| 9-2-08 | A3 | 8525 | TRM |
| 10-22-08 | A4 | 8588 | TJA |
| 6-25-09 | A5 | 8770 | JM |



NOTES:
 1- PLUG KIT CONSISTS OF :
 PRE-INSERTED PLUG HOUSING & SHIELD
 LOAD BAR
 FERRULE
 2- MATERIALS :
 FRONT HOUSING PLASTIC : BLUE POLYCARBONATE, UL 94-V0
 LOAD BAR : BLUE POLYCARBONATE, UL 94-V0
 SHIELD : TIN PLATED BRASS
 CONTACTS : PHOSPHOR BRONZE, SELECTIVE GOLD PLATING
 FERRULE : TIN PLATED BRASS
 3- CONTACTS TERMINATE STRANDED & SOLDER CONDUCTORS UP TO .031 [0.79] OUTSIDE DIAMETER OF INSULATION.
 4- FOR PRODUCT SPECIFICATION SEE PRO26-01.
 5- DIMENSIONS AND TOLERANCES COMPLY WITH FCC/CFR 47, PART 68.
 ▲ TERMINATED PLUG HEIGHT: .237 [6.02] ±.005 [0.13] ON CABLE



| | | |
|---------|--------------------------------|------------------------|
| BULK | 50 MICRO-INCHES [1.27um] | 940-SP-360808-031-A221 |
| PACKAGE | CONTACT PLATING IN MATING AREA | PART NUMBER |



Bel Stewart Connector
 11118 Susquehanna Trail South
 Glen Rock, PA 17327-9199
 (717) 235-7512 Fax: (717) 235-7954 <http://www.stewartconnector.com>

| | | | |
|---|--|-----------------|------------------|
| DO NOT SCALE DRAWING DRAWING IS SUBJECT TO CHANGE WITHOUT NOTICE | TITLE: 8 X 8 SHIELDED PLUG | DRN BY: KRL | DATE: 1/30/06 |
| DIMENSIONS: INCHES [METRIC] UNLESS OTHERWISE SPECIFIED TOLERANCES ARE ±.005 [0.13] ANGLES ARE ± 1° | THIS DRAWING AND THE SUBJECT MATTER SHOWN THEREON ARE CONFIDENTIAL AND THE PROPRIETARY PROPERTY OF BEL STEWART CONNECTOR AND SHALL NOT BE REPRODUCED, COPIED, OR USED IN ANY MANNER WITHOUT PRIOR WRITTEN CONSENT OF BEL STEWART CONNECTOR. THE SUBJECT MATTER MAY BE PATENTED OR A PATENT MAY BE PENDING. | APP'D BY: JM | DATE: 1-31-06 |
| SHEET NO. 1 OF 1 | DWG NO. CT360146 | REV. A5 | |



AutoCAD

REV. 7/5/03