

4

3

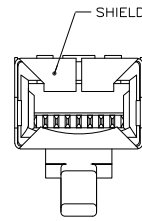
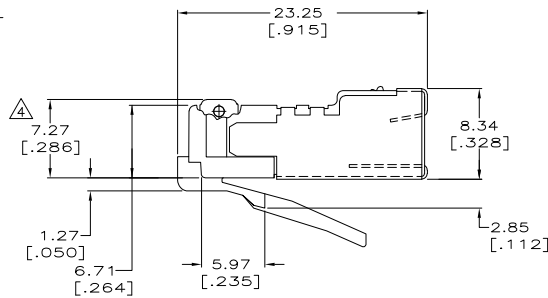
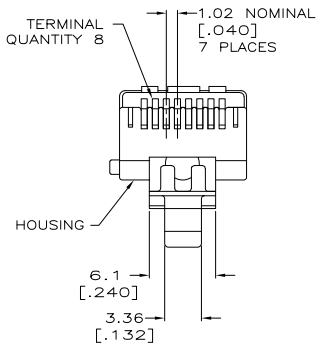
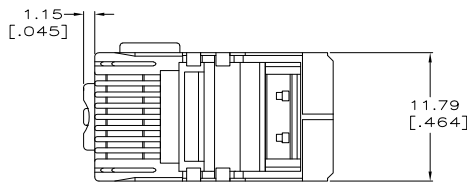
2

1

THIS DRAWING IS UNPUBLISHED. RELEASED FOR PUBLICATION
 © COPYRIGHT BY TYCO ELECTRONICS CORPORATION. ALL RIGHTS RESERVED.

LOC	DIST	REVISIONS					
HM	00	F	LTR	DESCRIPTION	DATE	OWN	APP'D
		D		REV ECO-06-022160	30OCT06	LH	CD

- ⚠ DIMENSIONS ARE MAXIMUM UNLESS OTHERWISE SPECIFIED.
- ⚠ MATERIAL: HOUSING - POLYCARBONATE, CLEAR
 TERMINAL - PHOSPHOR BRONZE, PLATED WITH 1.27μm [.000050] MINIMUM THICK GOLD IN LOCALIZED GOLD PLATE AREA, GOLD FLASH OVER THE REMAINDER, OVER 2.54μm [.000100] MINIMUM THICK NICKEL UNDERPLATE.
 SHIELD - COPPER ALLOY WITH 1.27μm [.000050] MINIMUM SEMI-BRIGHT (SATIN) NICKEL.
- 3. PLUG WILL ACCEPT 24 OR 26 AWG SOLID WIRE, 0.74-0.99 [.029-.039] DIAMETER, WITH A 5.08 [.200] DIAMETER MAXIMUM JACKET.
- ⚠ TERMINATED DIMENSION 6.15 [.242] MAXIMUM.
- ⚠ PACKAGED 500 ASSEMBLIES PER CARTON.



⚠	5-569531-2
PACKAGED	PART NUMBER

THIS DRAWING IS A CONTROLLED DOCUMENT.		DRN L HALL 20012006	Tyco Electronics Corporation	
		CHK C DOOLEY 30012006	Harrisburg, PA 17105-3608	
		APPC C DOOLEY 30012006	Tyco Electronics	
DIMENSIONS: mm [INCHES]		PRODUCT SPEC: 108-1163	MODULAR PLUG ASSEMBLY, KEYED, 8 POSITION, SHIELDED, ROUND CABLE, SOLID WIRE	
TOLERANCES UNLESS OTHERWISE SPECIFIED:		APPLICATION SPEC: 114-6016	SIZE: A2	RESTRICTED TO: -
0 P.L.C.	± .005	WEIGHT: -	CAGE CODE: 00779	REV: D
1 P.L.C.	± .005		PART NO: 569531	
2 P.L.C.	± .005			
3 P.L.C.	± .005			
4 P.L.C.	± .005			
ANGLES	± .005			
FINISH	± .005			
MATERIAL: -	FINISH: -	CUSTOMER DRAWING	SCALE: 4:1	SHEET: 1 of 1

AMP 1471-9 REV 31MM0200

569531