

4

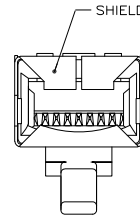
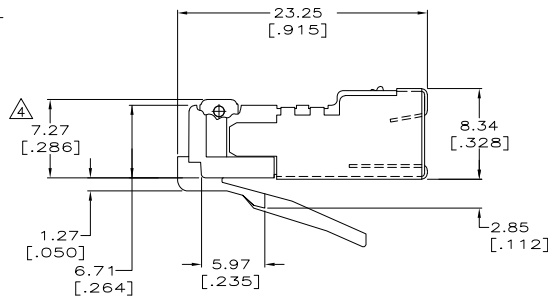
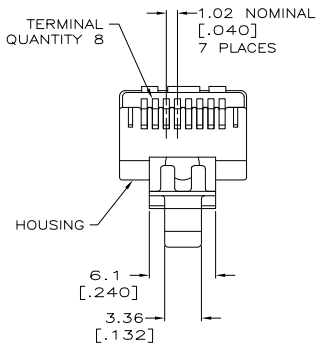
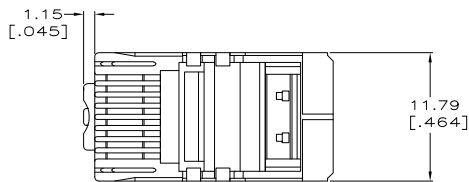
3

2

1

THIS DRAWING IS UNPUBLISHED. RELEASED FOR PUBLICATION
 © COPYRIGHT BY TYCO ELECTRONICS CORPORATION. ALL RIGHTS RESERVED.

LOC	DIST	REVISIONS			
F	LTR	DESCRIPTION	DATE	BY	APP'D
HM	00				
	C	REV ECO-06-022160	30OCT06	LH	CD



- 1. DIMENSIONS ARE MAXIMUM UNLESS OTHERWISE SPECIFIED.
- 2. MATERIAL: HOUSING-POLYCARBONATE, BLUE TERMINAL- PHOSPHOR BRONZE, PLATED WITH 1.27µm [.000050] MINIMUM THICK GOLD IN LOCALIZED GOLD PLATE AREA, GOLD FLASH OVER THE REMAINDER, OVER 2.54µm [.000100] MINIMUM THICK NICKEL UNDERPLATE. SHIELD - COPPER ALLOY WITH 1.27µm [.000050] MINIMUM SEMI-BRIGHT (SATIN) NICKEL.
- 3. PLUG WILL ACCEPT 26 OR 28 AWG SOLID WIRE, 0.74-0.86 [.029-.034] DIAMETER, WITH A 5.08 [.200] DIAMETER MAXIMUM JACKET.
- 4. TERMINATED DIMENSION 6.15 [.242] MAXIMUM.
- 5. PACKAGED 500 ASSEMBLIES PER CARTON.
- 6. PACKAGED 100 ASSEMBLIES PER BOX.

5-406347-3
5-406347-2
PACKAGED PART NUMBER

THIS DRAWING IS A CONTROLLED DOCUMENT.		BY: L. HALL 29OCT2006	Tyco Electronics Corporation Harrisburg, PA 17105-3608
DIMENSIONS: mm [INCHES]		CHK: C. DOOLEY 30OCT2006	
TOLERANCES UNLESS OTHERWISE SPECIFIED: 0 PL. ± .010 1 PL. ± .015 2 PL. ± .020 3 PL. ± .030 4 PL. ± .050 ANGLES ± .5°		NAME: C. DOOLEY PRODUCT SPEC: 108-1163 APPLICATION SPEC: 114-6016 WEIGHT: -	SIZE: A2 CASE CODE: 00779 DRAWING ID: C=406347
MATERIAL: -		RESTRICTED TO: -	
FINISH: -		CUSTOMER DRAWING	
		SCALE: 4:1	SHEET 1 of 1

AMP 1471-9 REV 31MM0200

406347

A