

4

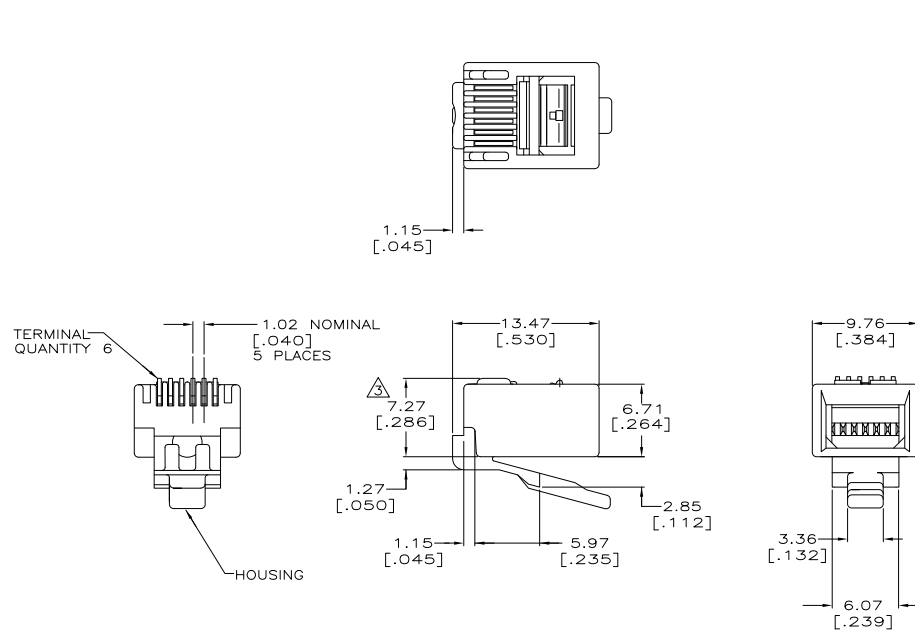
3

2

1

THIS DRAWING IS UNPUBLISHED. RELEASED FOR PUBLICATION
 © COPYRIGHT BY TYCO ELECTRONICS CORPORATION. ALL RIGHTS RESERVED.

LOC	DIST	REVISIONS				
		F	LTR	DATE	BY	APPD
HM	00	B		29FEB08	LH	BM
		REV ECO-08-004864				



- ⚠ MATERIAL: HOUSING—POLYCARBONATE,CLEAR. TERMINAL—0.36[.014] THICK PHOSPHOR BRONZE PLATED WITH 1.27μm[.000050] MINIMUM THICK GOLD IN LOCALIZED GOLD PLATE AREA, GOLD FLASH OVER THE REMAINDER, OVER 2.54μm[.000100] MINIMUM THICK NICKEL UNDERPLATE.
- 2. PLUG WILL ACCEPT 24 OR 26 AWG SOLID WIRE HAVING A MAXIMUM INSULATION DIAMETER OF 0.99[.039] AND A MAXIMUM DIAMETER ROUND CABLE JACKET OF 4.57 [.180].
- ⚠ TERMINATED DIMENSION 6.15[.242] MAXIMUM.
- ⚠ DIMENSIONS ARE MAXIMUM UNLESS OTHERWISE SPECIFIED.
- ⚠ 1000 ASSEMBLIES PER PACKAGE.
- ⚠ 100 ASSEMBLIES PER PACKAGE.

⚠	5-569032-3
⚠	5-569032-2
⚠	PACKAGED PART NO.

THIS DRAWING IS A CONTROLLED DOCUMENT.		DWG	L. HALL	29FEB2008	Tyco Electronics Corporation Harrisburg, PA 17105-3608	
DIMENSIONS: MM (INCHES)		CHK	S. MCNEILL	29FEB2008	NAME	
TOLERANCES UNLESS OTHERWISE SPECIFIED:		APPD	B. MCNEILL	29FEB2008	MODULAR PLUG ASSEMBLY, 6 POSITION, ROUND CABLE, SOLID WIRE	
0 P.L.C.	± .005	PRODUCT SPEC		108-1163		RESTRICTED TO
1 P.L.C.	± .005	APPLICATION SPEC		114-6016		—
2 P.L.C.	± .005	MATERIAL		—		—
3 P.L.C.	± .005	FINISH		—		—
4 P.L.C.	± .005	CUSTOMER DRAWING		—		—
ANGLES	± .005	SIZE		A2 00779 C=569032		SCALE
		DRAWING NO		—		4:1
		REVISIONS		—		SHEET
		DATE		—		1 of 1
		BY		—		REV
		APPD		—		B

AMP 1471-9 REV 31MM2000

569032