

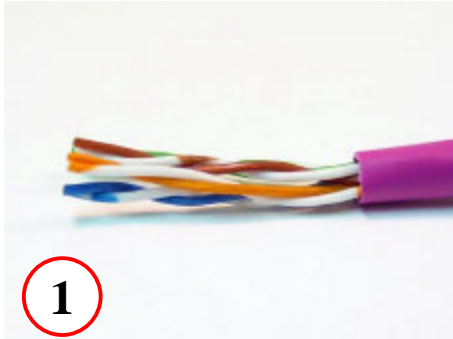
Bel Stewart Connector

37 SERIES UNSHIELDED PLUG W/MANAGEMENT BAR
ASSEMBLY INSTRUCTIONS

11118 Susquehanna Trail South Glen Rock, PA 17327

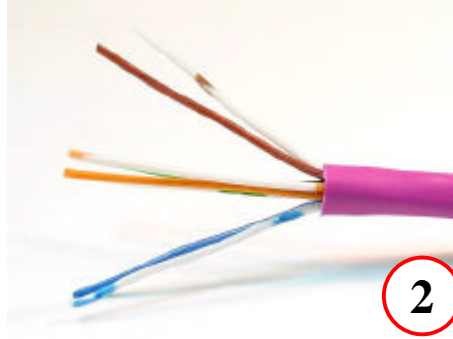
37 SERIES UNSHIELDED PLUG WITH MANAGEMENT BAR ASSEMBLY INSTRUCTIONS

Assembly steps 1 – 11:



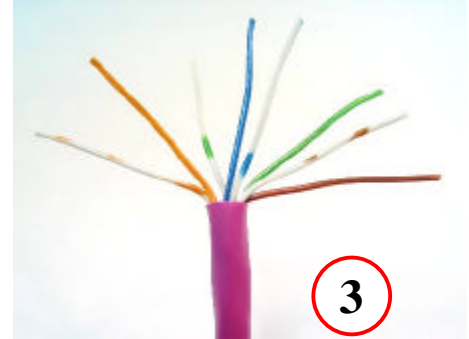
1

Remove approximately 1 inch of Cable Jacket



2

Spread out wire pairs



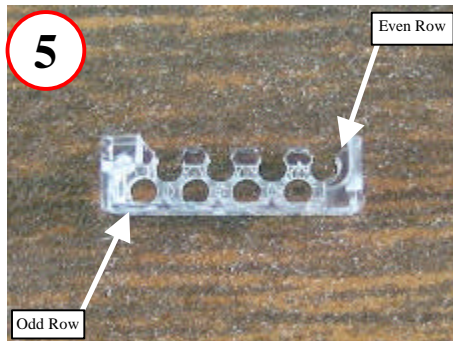
3

Align pairs (TIA 586-B shown)



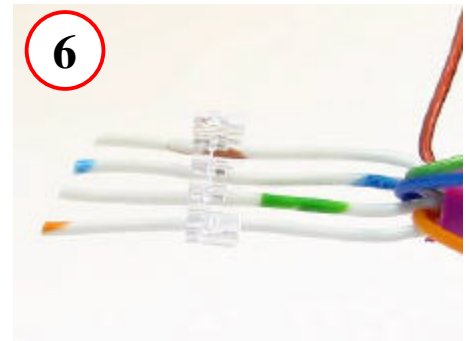
4

Trim Odd wires (1, 3, 5, & 7) at an angle



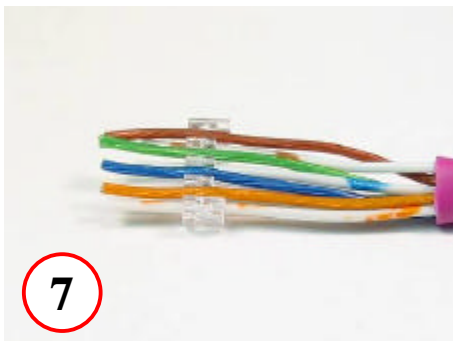
5

A264 Management Bar – Odd and Even rows



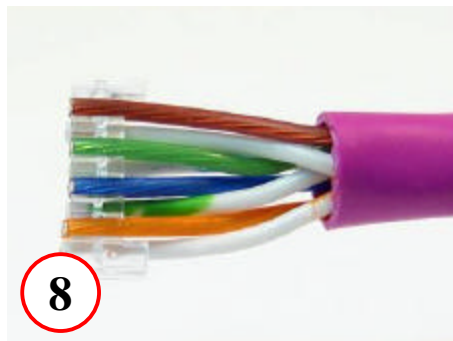
6

Slide trimmed Odd conductors into Odd row of Management Bar



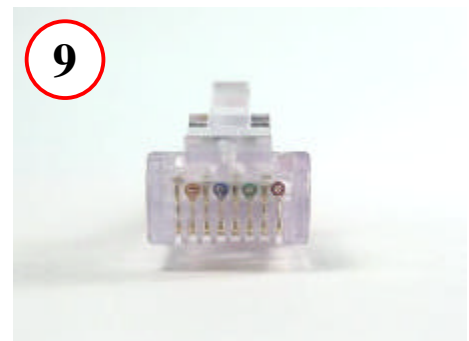
7

Press Even wires (2, 4, 6, & 8) into place in Management Bar



8

Trim wires to approx. 7/16" from front of cable jacket



9

Insert cable into plug housing. Make sure wire ends are visible thru end of plug housing

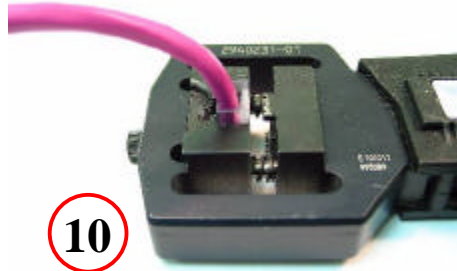
Bel Stewart Connector

37 SERIES UNSHIELDED PLUG W/MANAGEMENT BAR
ASSEMBLY INSTRUCTIONS

11118 Susquehanna Trail South Glen Rock, PA 17327

37 SERIES UNSHIELDED PLUG WITH MANAGEMENT BAR ASSEMBLY INSTRUCTIONS

Assembly steps 1 – 11 (Cont.):



10

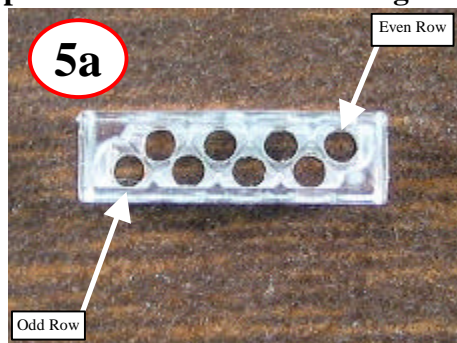
Crimp contacts and strain relief



11

Plug assembly is complete

Alternate Steps For 370808M2-MB Management Bar:



5a

Odd and Even Rows



7a

Trim Even wires (2, 4, 6, & 8) even
with bottom of Management Bar
and insert into Even row