

Bel Stewart Connector

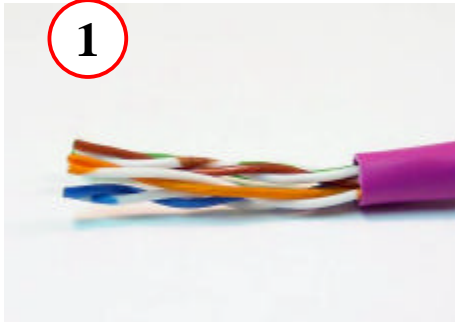
ONE PIECE "UNIBODY" UNSHIELDED 37 SERIES PLUG
ASSEMBLY INSTRUCTIONS

11118 Susquehanna Trail South Glen Rock, PA 17327

STEWART CONNECTOR 37 SERIES UNSHIELDED UNIBODY PLUG ASSEMBLY INSTRUCTIONS

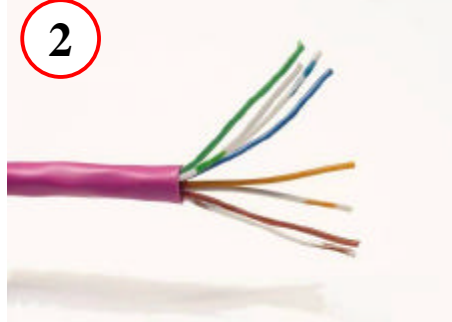
Assembly steps 1 – 8:

1



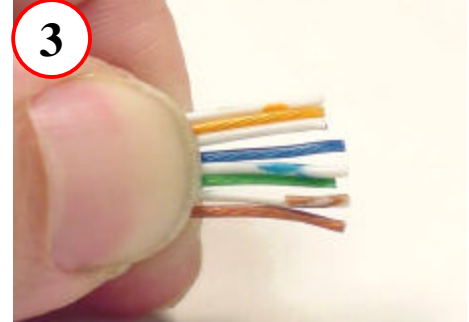
Remove approximately 1 inch of
Cable Jacket

2



Untwist the pairs and Straighten
the Wires

3



Position Wires into Correct
Configuration (586-B Shown)

4



Trim Wire Ends at 90°, Approx.
9/16" From Jacket

5



Insert Wires Along Plug Top,
Maintaining Correct Alignment

6



Inspect The Plug; Wires Should Be
Visible from Plug Front

7



Crimp Contacts and Strain Relief

8



Construction Complete