

4

3

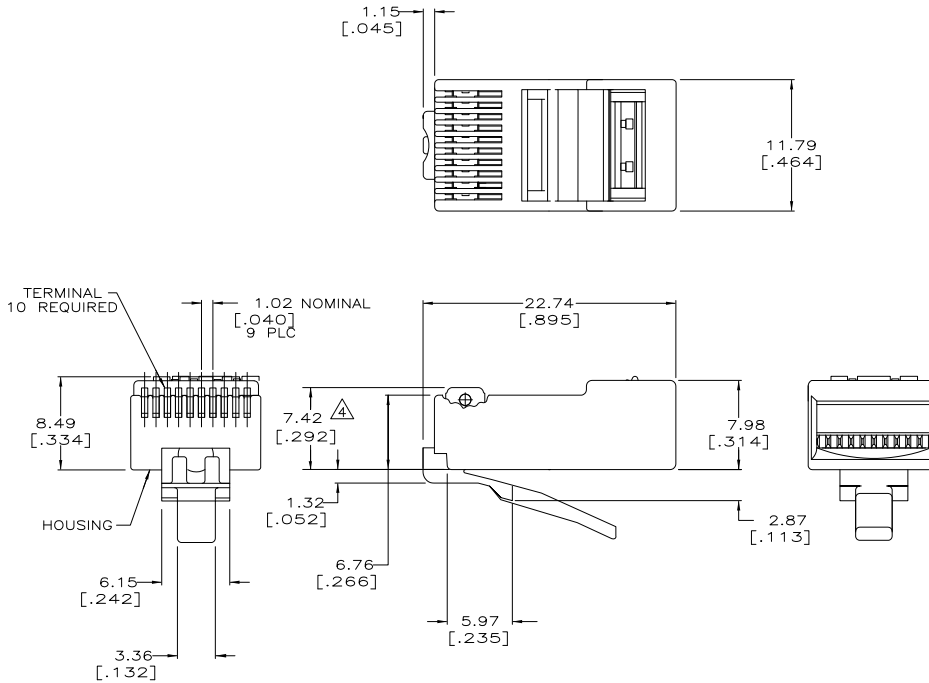
2

1

THIS DRAWING IS UNPUBLISHED. RELEASED FOR PUBLICATION. ALL RIGHTS RESERVED.

LOC	DIST	REVISIONS			
F	LNK	DESCRIPTION	DATE	BY	APPD
HM	00				
	C1	REVISED PER ECO-11-005033	21MAR11	RK	HMR

1. DIMENSIONS ARE MAXIMUM UNLESS OTHERWISE SPECIFIED.
2. MATERIAL: HOUSING- POLYCARBONATE, CLEAR TERMINAL- PHOSPHOR BRONZE, PLATED WITH  $1.27\mu\text{m}$  [.000050] MINIMUM THICK GOLD IN LOCALIZED GOLD PLATE AREA, GOLD FLASH OVER THE REMAINDER, OVER  $2.54\mu\text{m}$  [.000100] MINIMUM THICK NICKEL UNDERPLATE.
3. PLUG WILL ACCEPT 24 TO 28 AWG STRANDED WIRE,  $0.74-0.99$  [.029-.039] DIAMETER, WITH A  $5.34$  [.210] DIAMETER JACKET.
4. TERMINATED DIMENSION  $6.15$  [.242] MAXIMUM.
5. 500 ASSEMBLIES PER PACKAGE.
6. 100 ASSEMBLIES PER PACKAGE.



5-557963-3	
5-557963-2	
PACKAGED	PART NUMBER

THIS DRAWING IS A CONTROLLED DOCUMENT.		DRW S. SIMPSON	24-APR-93	
		CHK C. WHITT	11-MAY-93	
		APPD M. HAWKINS	14-MAY-93	NAME
DIMENSIONS: mm [INCHES]		PRODUCT SPEC 108-1163		
TOLERANCES UNLESS OTHERWISE SPECIFIED:		APPLICATION SPEC 114-6016		
0 PLC ± .010		SIZE A2		
1 PLC ± .005		CAGE CODE 00779		
2 PLC ± .002		DRAWING NO C-557963		
3 PLC ± .001		RESTRICTED TO		
4 PLC ± .0005				
ANGLES ± .001				
MATERIAL △	FINISH △	CUSTOMER DRAWING		
		SCALE 4:1	SHEET 1 of 1	REV C1

TE Connectivity

MODULAR PLUG ASSEMBLY,  
10 POSITION, ROUND CABLE,  
STRANDED WIRE