

4

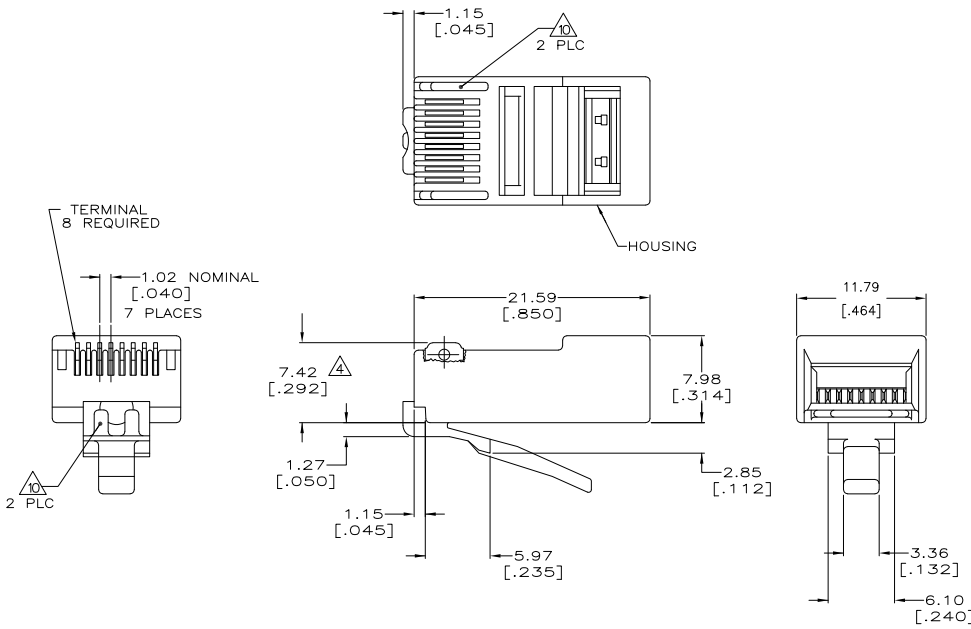
3

2

1

THIS DRAWING IS UNPUBLISHED. RELEASED FOR PUBLICATION. ALL RIGHTS RESERVED.

| LOC | DIST | REVISIONS | | |
|-----|------|---------------------------|---------|--------|
| F | LNK | DESCRIPTION | DATE | BY |
| HM | 00 | | | |
| | P1 | REVISED PER ECO-11-005033 | 21MAR11 | RK HMR |



- 1 DIMENSIONS ARE MAXIMUM UNLESS OTHERWISE SPECIFIED.
- 2 MATERIAL: HOUSING-POLYCARBONATE,CLEAR. TERMINAL-0.36[.014] THICK PHOSPHOR BRONZE PLATED WITH 1.27µm[.000050] THICK GOLD IN LOCALIZED GOLD PLATE AREA. GOLD FLASH OVER THE REMAINDER, OVER 2.54µm[.000100] THICK NICKEL UNDERPLATE.
- 3. PLUG WILL ACCEPT 24 OR 26 AWG SOLID WIRE HAVING A MAXIMUM INSULATION DIAMETER OF 0.89-0.99[.035-.039] AND A MAXIMUM OVAL CABLE JACKET OF 2.54 X 8.89[.100 X .350].
- 4 TERMINATED DIMENSION 6.15[.242] MAXIMUM.
- 6 10,000 ASSEMBLIES PER PACKAGE.
- 7 500 ASSEMBLIES PER PACKAGE.
- 8 100 ASSEMBLIES PER PACKAGE.
- 9 25 ASSEMBLIES PER PACKAGE.
- 10 REELED PRODUCT ON STRIP DOES NOT HAVE VOID CORING ILLUSTRATED ON THIS DRAWING.
- 11 100 ASSEMBLIES PER CARTON.

| | | |
|-----------------|-----------|------------|
| | | 5-554720-4 |
| | | 5-554720-3 |
| | | 5-554720-2 |
| | | 5-554720-1 |
| | | 3-554720-3 |
| | | 554720-1 |
| OBSOLETE | REELED 10 | 554720-1 |
| | PACKAGED | PART NO. |

| THIS DRAWING IS A CONTROLLED DOCUMENT. | | DW | | TE Connectivity | |
|--|---|---------|-----------|---|--|
| DIMENSIONS: mm [INCHES] | | L. HALL | 03NOV2005 | TE Connectivity | |
| TOLERANCES UNLESS OTHERWISE SPECIFIED: | | CHK | 03NOV2005 | MODULAR PLUG ASSEMBLY, 8 POSITION, SOLID WIRE | |
| 0 PLC | ± | C. CASH | 03NOV2005 | NAME | |
| 1 PLC | ± | ZIPC | 03NOV2005 | PRODUCT SPEC | |
| 2 PLC | ± | C. CASH | | 108-1163 | |
| 3 PLC | ± | | | APPLICATION SPEC | |
| 4 PLC | ± | | | 114-6016 | |
| ANGLES | ± | | | SIZE CASE CODE DRAWING NO | |
| FINISH | ± | | | A2 00779 C=554720 | |
| MATERIAL | | | | RESTRICTED TO | |
| | | | | CUSTOMER DRAWING | |
| | | | | SCALE 4:1 SHEET 1 of 1 REV P1 | |

1471-9 (3/11)

554720

A