

4

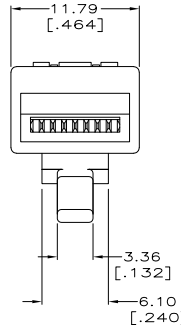
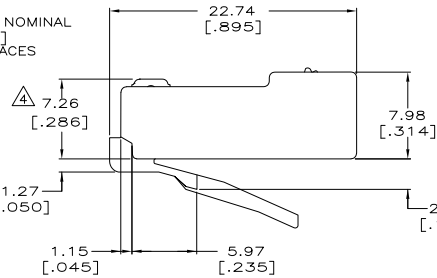
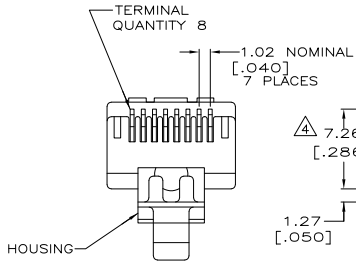
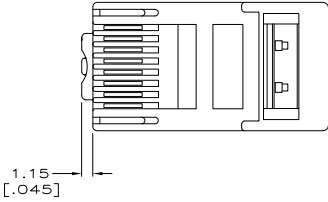
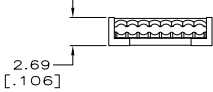
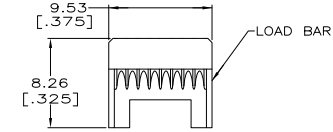
3

2

1

THIS DRAWING IS UNPUBLISHED. RELEASED FOR PUBLICATION. ALL RIGHTS RESERVED.

LOC	DIST	REVISIONS			
F	LNK	DESCRIPTION	DATE	BY	APPD
HM	00				
	D1	REVISED PER ECO-11-005033	21MAR11	RK	HMR



- 1 MATERIAL:
HOUSING - 94V-0 RATED POLYCARBONATE, CLEAR.
TERMINAL - 0.36[.014] THICK PHOSPHOR BRONZE PLATED WITH 1.27μm[.000050] MINIMUM THICK GOLD IN LOCALIZED AREA, GOLD FLASH OVER THE REMAINDER, OVER 2.54μm[.000100] MINIMUM THICK NICKEL UNDERPLATE.
LOAD BAR - PBT POLYESTER, BLACK.
- 2 DIMENSIONS ARE MAXIMUM UNLESS OTHERWISE SPECIFIED.
- 3. PLUG WILL ACCEPT A 24,26 OR 28 AWG SOLID CONDUCTOR, PROVIDED THE INSULATED CONDUCTOR DIAMETER IS 0.89[.035] TO 0.99[.039]; WITH AN UNSHIELDED, PLIABLE, LOOSE CABLE JACKET OF 4.83[.190] TO 5.59[.220] DIAMETER OR AN UNSHIELDED, RIGID, HARD CABLE JACKET OF 4.83[.190] TO 5.08[.200] DIAMETER.
- 4 TERMINATED DIMENSION 6.15[.242] MAXIMUM.
- 5 500 ASSEMBLIES AND 500 LOAD BARS PER PACKAGE.
- 6 100 ASSEMBLIES AND 100 LOAD BARS PER PACKAGE.
- 7 25 ASSEMBLIES AND 25 LOAD BARS PER PACKAGE.
- 8 10,000 ASSEMBLIES AND 10,000 LOAD BARS PER PACKAGE.
- 9. UL RECOGNIZED: FILE NUMBER E81956.

7	5-569278-4
6	5-569278-3
5	5-569278-2
4	5-569278-1
PACKAGED	PART NUMBER

THIS DRAWING IS A CONTROLLED DOCUMENT.

DWG	DL DRUMMOND	5-22-95
CHK	D AHIERON	5-22-95
APPD	F LAURER	5-22-95

TE Connectivity

MODULAR PLUG ASSEMBLY, 8 POSITION, ROUND CABLE, SOLID WIRE

DIMENSIONS:	mm
TOLERANCES UNLESS OTHERWISE SPECIFIED:	
0 PLC	±
1 PLC	±
2 PLC	±
3 PLC	±
4 PLC	±
ANGLES	±
FINISH	

APPLICATION SPEC:	
WEIGHT:	
SIZE	A2
CAGE CODE	00779
DRAWING NO	C-569278
RESTRICTED TO	

CUSTOMER DRAWING SCALE 4:1 SHEET 1 of 1 REV D1