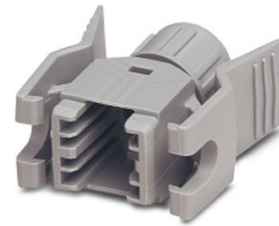


VS-08-T-RJ45/IP 20

Order No.: 1688638

<http://eshop.phoenixcontact.de/phoenix/treeViewClick.do?UID=1688638>

RJ45 sleeve housing IP20, for pin insert VS-08-ST-RJ45, with push-pull interlocking for panel mounting frames, for cable cross section 5.0 mm ... 6.5 mm

Ethernet**Commercial data**

EAN	4017918607920
Pack	5 pcs.
Customs tariff	85472000
Weight/Piece	0.00585 KG
Catalog page information	Page 168 (PC-2007)

Product notes

WEEE/RoHS-compliant since:
01/01/2003



<http://www.download.phoenixcontact.com>
Please note that the data given here has been taken from the online catalog. For comprehensive information and data, please refer to the user documentation. The General Terms and Conditions of Use apply to Internet downloads.

Technical data**Mechanical characteristics**

Insertion/withdrawal cycles	≥ 750
External cable diameter	5 mm ... 6.5 mm
Cable exit	Straight
Color	gray
Ambient temperature (operation)	-40 °C ... 80 °C

Material data

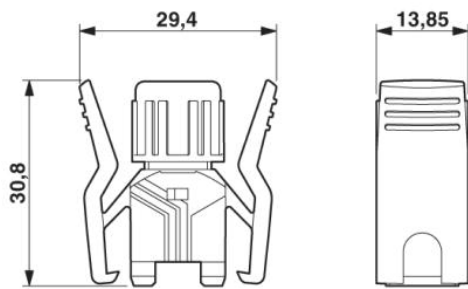
Inflammability class acc. to UL 94	V0
Housing material	PA
Degree of protection	IP20

Accessories

Item	Designation	Description
1688573	VS-08-ST-RJ45	RJ45 pin insert, CAT5e, 8-pos., shielded, IDC connection method, for litz wires AWG 26 and solid wires AWG 26 ... 24

Diagrams/Drawings

Dimensioned drawing



RJ45 sleeve housing, IP20

Address

PHOENIX CONTACT Deutschland GmbH
Flachsmarktstr. 8
32825 Blomberg, Germany
Phone +49 5235 3 12000
Fax +49 5235 3 41200
<http://www.phoenixcontact.de>



© 2010 Phoenix Contact
Technical modifications reserved;