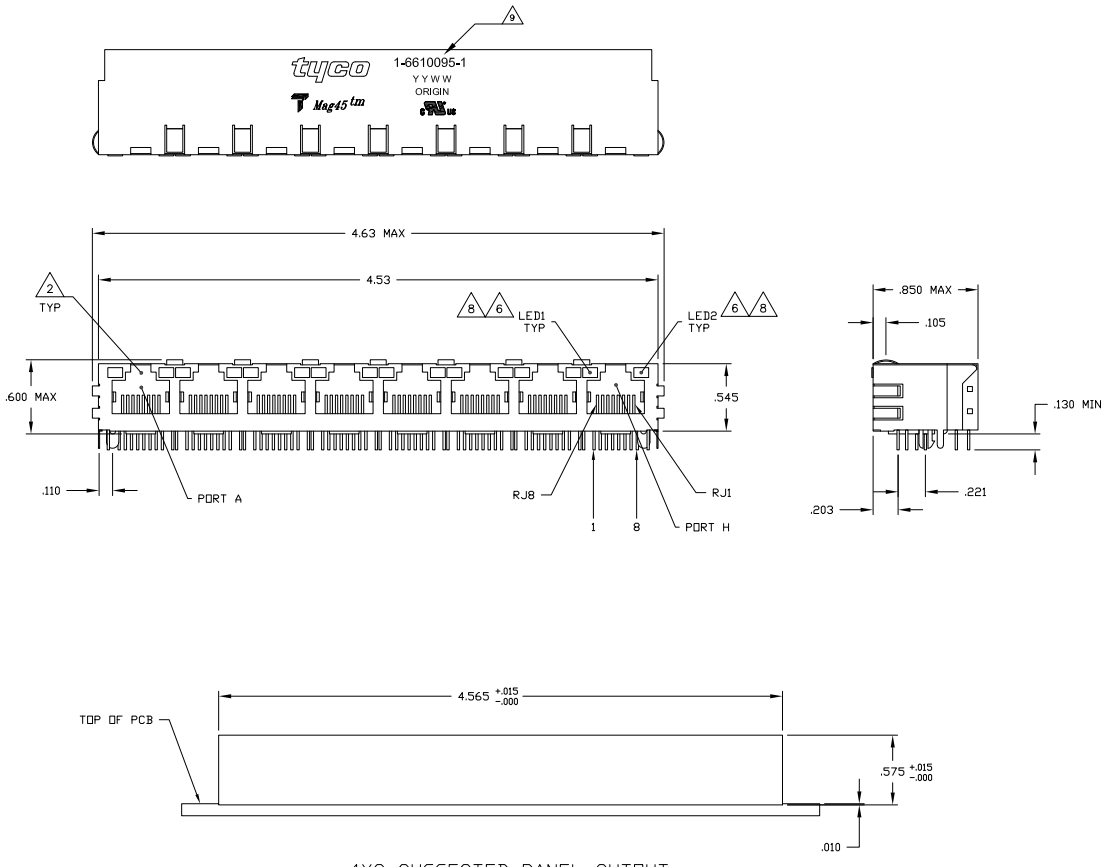


REV	DATE	DESCRIPTION	BY	CHK	APP
AA	22				
A		REV PER EC 0513-0650-04			

MECHANICAL:



1X8 SUGGESTED PANEL CUTOUT

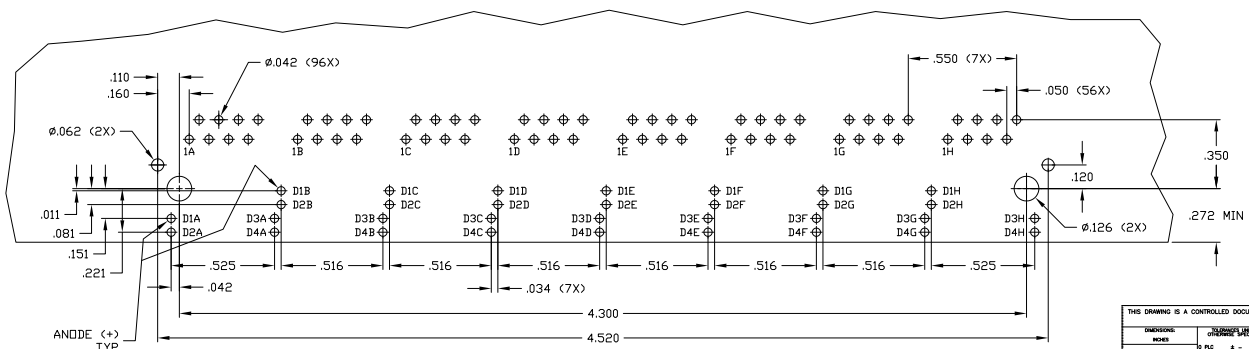
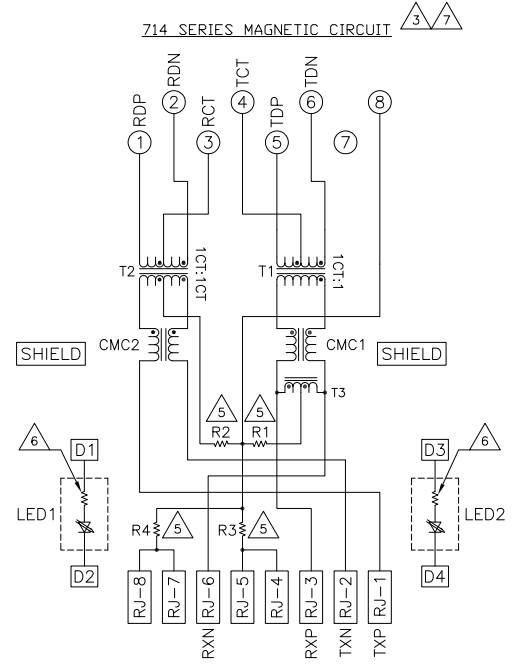
- △ MATERIALS:
 - HOUSING - THERMOPLASTIC PET POLYESTER FLAMMABILITY RATING UL 94V-0
 - SHIELD - .010" THICK, C26800 BRASS PREPLATED WITH 30μINCH MIN SEMI-BRIGHT NICKEL. SOLDER TABS POST DIPPED WITH 100μINCH MIN SAC SOLDER.
 - MOD JACK CONTACTS - 0.015" X 0.018" PHOSPHOR BRONZE, 50μINCH MIN OVERALL NICKEL UNDERPLATE WITH SELECT 50μINCH MIN HARD GOLD FINISH PLATE.
 - SOLDERTAILS WITH 100μINCH MIN MATTE TIN AND/OR SAC SOLDER DIP.
 - LIGHT EMITTING DIODE(LED) - DIFFUSED EPOXY LENS, .020" X .020" CARBON STEEL WIREFRAME LEADS PRE-PLATED WITH 80μINCH SILVER OVER 40μINCH NICKEL UNDERPLATE OVER 40μINCH COPPER UNDERPLATE. POST-PLATED WITH 100μINCH MIN MATTE TIN AND/OR SAC SOLDER DIP OR PURE TIN SOLDER DIP.
- △ RJ45 JACK CAVITY CONFORMS TO FCC RULES AND REGULATIONS PART 68, SUB PART F.
- △ MAGNETICS
 - IMPEDANCE: 100 OHMS
 - TURNS RATIO (CHP-CABLE): TX = 1:1, RX = 1:1
 - OPEN CIRCUIT INDUCTANCE (OCL): 350nH MIN @100kHz, 0.1VRMS, 8mADC, BIAS FROM 0°C TO 70°C, TX AND RX
 - PERFORMANCE @ 25°C:
 - INSERTION LOSS (IL): 1.1dB MAX FROM 0.5MHz TO 100MHz
 - RETURN LOSS (RL): 18dB MIN FROM 0.5MHz TO 30MHz
 - 18-20LOG(I/F) MIN FROM 30 MHz TO 60MHz
 - 12dB MIN FROM 60 MHz TO 80MHz
 - CROSSTALK ATTENUATION: 35dB MIN FROM 0.5MHz TO 4.0MHz
 - 33-20LOG(I/F/50dB) MIN FROM 4.0 MHz TO 100MHz
 - COMMON MODE REJECTION RATIO (CMRR): 30dB MIN FROM 0.5MHz TO 100MHz
 - ISOLATION VOLTAGE: COMPLIES WITH IEEE802.3 2002, PARA 23.5.11, ITEM a or b.
- 4. OPERATING TEMPERATURE: FROM 0°C TO -70°C.
- △ R1-R4 = 75 OHMS, 1/16 W, 5% RESISTORS.
- △ LED COMPLIANT WITH IEC60825-1 SAFETY OF LASER PRODUCTS. WHEN OPERATED UP TO 20 mA. THE 250 OHM RESISTOR IS INCLUDED IN THE LEADS.
- △ INDICATED CONNECTIONS ARE FOR NIC CONFIGURATION. THE MAGNETICS ARE ASYMMETRICAL, AND DO NOT SUPPORT AUTO-MDI/MDIX.
- △ LED PEAK WAVELENGTH: GREEN(λ) = 565nm.
- △ TRADEMARK, PART NUMBER, DATE CODE, COUNTRY OF ORIGIN AND AGENCY APPROVAL MARKING IN APPROXIMATE LOCATION SHOWN.

GREEN		GREEN	1-6610095-1
LED1	LED2		PART NUMBER
THIS DRAWING IS A CONTROLLED DOCUMENT.			
DESIGNED BY: J. FERNANDEZ CHECKED BY: J. FERNANDEZ DATE: 10B-2100 REV: 1	DRAWN BY: J. FERNANDEZ CHECKED BY: J. FERNANDEZ DATE: 10B-2100 REV: 1	1X8 MAG45(TM) MODULAR JACK, 7N2 SOLEMATIC, 714 SERIES MAGNETIC CIRCUIT, SHIELDED, WITH RESISTOR LEADS	Tyco Electronics Corporation Harrisburg, PA 17105-3608
CUSTOMER DRAWING		100779	REV: 1

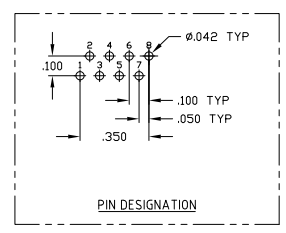
REV	DATE	DESCRIPTION	BY	CHK	APP
AA	22	SEE SHEET 1			

ELECTRICAL:

714 SERIES MAGNETIC CIRCUIT



SUGGESTED PCB LAYOUT
(Component Side)



PIN DESIGNATION

THIS DRAWING IS A CONTROLLED DOCUMENT.		DESIGNED BY: FERNANDEZ, ROBERT DRAWN BY: FANFOLLE, ROBERT CHECKED BY: FANFOLLE, ROBERT DATE: 108-2100 REVISION: 001	TYPED BY: [blank] DATE: [blank] REVISION: [blank]
CUSTOMER DRAWING: [blank]		1X8 MAG45(TM) MODULAR JACK, 7N2 SCHEMATIC, 714 SERIES MAGNETIC CIRCUIT, SHIELDED, WITH RESISTOR LEADS	PART NO: 108-2100 REV: 001 DATE: 10/77 BY: [blank]