

4

3

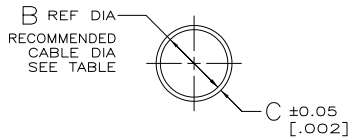
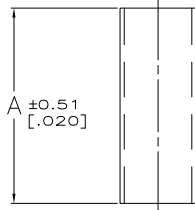
2

1

THIS DRAWING IS UNPUBLISHED. RELEASED FOR PUBLICATION. ALL RIGHTS RESERVED.

LOC	DIST	REVISIONS					
CP	00	P	LTR	DESCRIPTION	DATE	BY	APPD
		FS		REVISED PER ECO-11-004835	11MAR11	RK	HMR

- 1 .000100 MIN TIN PER MIL-T-10727 OR TIN-LEAD.
- 2 .000100 MIN TIN PER MIL-T-10727.
- 3 COPPER PER QQ-C-576
- 4 SUPERSEDED
- 5 OBSOLETE PARTS: OBSOLETE CIS STREAMLINING PER D.RENAUD/D.SINISI



2	-	4.83-6.10 [.190-.240]	0.38 [.015]	6.15 [.242]	10.16 [.400]	5-745130-6
	7-745129-8 7-745129-9	5.84-7.11 [.230-.280]	0.38 [.015]	7.16 [.282]	17.78 [.700]	4-745130-5
1	-	17.78-19.05 [.700-.750]	0.51 [.020]	19.30 [.760]	17.78 [.700]	4-745130-4
	7-745129-4 7-745129-6	14.99-16.51 [.590-.650]	0.51 [.020]	16.76 [.660]	17.78 [.700]	4-745130-3
2	7-745129-1 7-745129-5	11.81-13.46 [.465-.530]	0.51 [.020]	13.59 [.535]	17.78 [.700]	4-745130-2
	6-745129-9	9.65-10.92 [.380-.430]	0.38 [.015]	11.10 [.437]	17.78 [.700]	4-745130-1
1	7-745129-2	8.00-9.27 [.315-.365]	0.38 [.015]	9.52 [.375]	17.78 [.700]	4-745130-0
	7-745129-0 7-745129-3	7.62-8.89 [.300-.350]	0.38 [.015]	8.99 [.354]	17.78 [.700]	3-745130-9
2	7-745129-8 7-745129-3	4.83-6.10 [.190-.240]	0.38 [.015]	6.15 [.242]	17.78 [.700]	3-745130-8
	-	4.83-6.10 [.190-.240]	0.38 [.015]	6.15 [.242]	10.16 [.400]	3-745130-7
4	3-745129-2 3-745129-4	5.84-7.11 [.230-.280]	0.38 [.015]	7.16 [.282]	17.78 [.700]	1-745130-6
	-	17.78-19.05 [.700-.750]	0.51 [.020]	19.30 [.760]	17.78 [.700]	1-745130-4
4	-	14.99-16.51 [.590-.650]	0.51 [.020]	16.76 [.660]	17.78 [.700]	1-745130-3
	2-745129-2 2-745129-6	11.81-13.46 [.465-.530]	0.51 [.020]	13.59 [.535]	17.78 [.700]	1-745130-2
4	1-745129-9 2-745129-3	9.65-10.92 [.380-.430]	0.38 [.015]	11.10 [.437]	17.78 [.700]	1-745130-1
	1-745129-7	8.00-9.27 [.315-.365]	0.38 [.015]	9.52 [.375]	17.78 [.700]	1-745130-0
4	2-745129-0	7.62-8.89 [.300-.350]	0.38 [.015]	8.99 [.354]	17.78 [.700]	745130-9
	1-745129-8 2-745129-1	4.83-6.10 [.190-.240]	0.38 [.015]	6.15 [.242]	17.78 [.700]	745130-8
FINISH	USED WITH	RECOMMENDED CABLE DIA	C	B	A	PART NUMBER

THIS DRAWING IS A CONTROLLED DOCUMENT.

DESIGNER: M. WALMSLEY	DATE: 21MAY04	REV: 0	REVISED BY: M. WALMSLEY	DATE: 21MAY04	REV: 0
CHECKED BY: M. WALMSLEY	DATE: 21MAY04	REV: 0	APPROVED BY: M. WALMSLEY	DATE: 21MAY04	REV: 0
MATERIAL: SEE TABLE			FINISH: SEE TABLE		

TE Connectivity
FERRULE, OUTER, AMPLUMITE HDP-20
SIZE: A2, CASE CODE: 00779, DRAWING NO: C=745130
SCALE: 4:1, SHEET: 1 of 1, REV: F5

745130

A

B

C

D

A

B

C

D

A

B

C

D

A

B

C

D

A

B

C

D

A

B

C

D

A

B

C

D

A

B

C

D

A

B

C

D

A

B

C

D

A

B

C

D

A

B

C

D

A

B

C

D

A

B

C

D

A

B

C

D

A

B

C

D

A

B

C

D

A

B

C

D

A

B

C

D

A

B

C

D

A

B

C

D

A

B

C

D

A

B

C

D

A

B

C

D

A

B

C

D

A

B

C

D

A

B

C

D

A

B

C

D

A

B

C

D

A

B

C

D

A

B

C

D

A

B

C

D

A

B

C

D

A

B

C

D

A

B

C

D

A

B

C

D

A

B

C

D

A

B

C

D

A

B

C

D

A

B

C

D

A

B

C

D

A

B

C

D

A

B

C

D

A

B

C

D

A

B

C

D

A

B

C

D

A

B

C

D

A

B

C

D

A

B

C

D

A

B

C

D

A

B

C

D

A

B

C

D

A

B

C

D

A

B

C

D

A

B

C

D

A

B

C

D

A

B

C

D

A

B

C

D

A

B

C

D

A

B

C

D

A

B

C

D

A

B