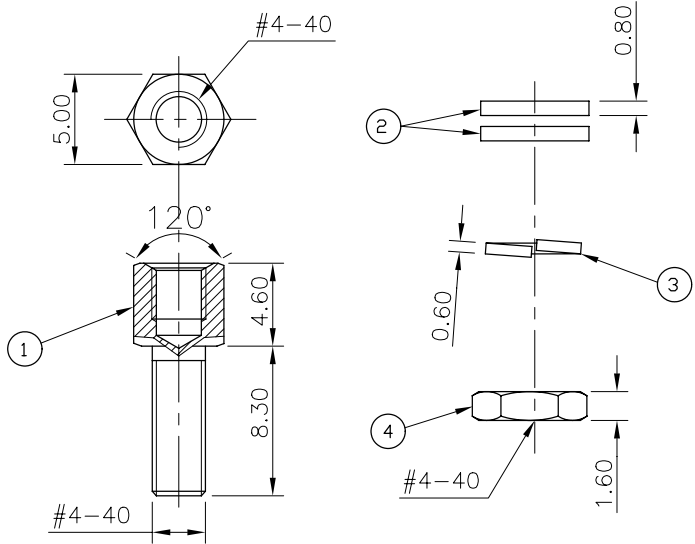


This document is the property of Amphenol Corporation and is delivered on the express condition that it is not to be disclosed, reproduced or used, in whole or in part, for manufacture or sale by anyone other than Amphenol Corporation without the prior consent. If that no right is granted to disclose or to use any information in this document.



- ① SCREW
- ② WASHERS
- ③ LOCK WASHER
- ④ NUT



Customer drawing

REVISIONS				
SYM	ECN	DESCRIPTION	DATE	APPROVED
1			04/25/08	

D-SUB TECHNICAL DATA

MATERIAL:

Screwlock: Steel,100u" min tin over 50u" min nickel.
 Washer: Steel,100u" min tin over 50u" min nickel.
 Lock washer: XC 35
 Nut: Brass,100u" min tin over 50u" min nickel.

PACKAGE:

Delivered separately
 1 P/N = 10 sets

MARKING:

Amphenol...(Series No.) Commercial reference
 Manufacturing date

UNLESS OTHERWISE SPECIFIED		APPROVAL	DATE	Amphenol®
TOLERANCES		DRAWN	Christina.cng 04/25/08	
.X	+/-	0.50	CHECKED	Hk.weng 04/25/08
.XX	+/-	0.30	CHECKED	
.XXX	+/-	0.20		
FRACTIONS	+/-	Z"		
ANGLES	+/-	Z"		
FOR MATERIALS AND FINISHES		DRAWING FILE :		TITLE
SEE NOTES		REMOVE SHARP EDGES		Accessory, screwlock with nut and washers
DIMENSIONS		ANGLE OF PROJECTION		SIZE
U.S.	FINISHES			DRAWING NO.
METRIC	MM			C L17D2041B2TX
				SCALE
				NONE
				SHEET 1 OF 1
				REV.
				1