

4

3

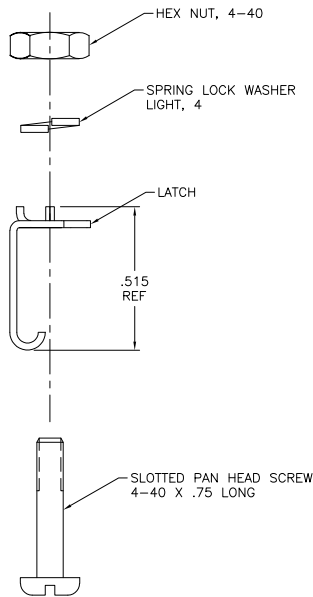
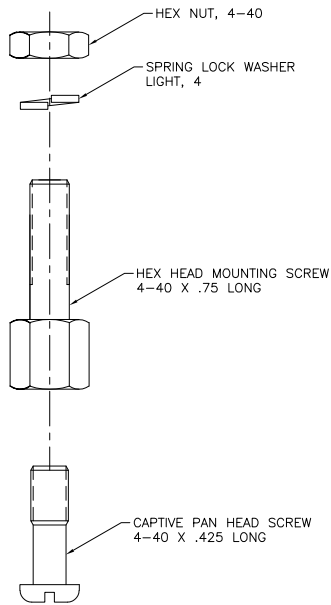
2

1

THIS DRAWING IS UNPUBLISHED. RELEASED FOR PUBLICATION
 © COPYRIGHT BY TYCO ELECTRONICS CORPORATION. ALL RIGHTS RESERVED.

LOC	DIST	REVISIONS			
F	LN	DESCRIPTION	DATE	BY	APP'D
GP	00				
	0	RELEASED PER EC 0513-0288-05		JOSEPOS	BM WM

⚠ MATERIAL:
 CAPTIVE PAN HEAD SCREW: ZINC PLATED STEEL.
 HEX HEAD SCREW: BRASS WITH CHROME PLATE.
 ALL OTHER HARDWARE: PASSIVATED STAINLESS STEEL.



5552690-1
 PART NUMBER

THIS DRAWING IS A CONTROLLED DOCUMENT.		DR B. MCMASTER	30SEP05	Tyco Electronics Corporation Harrisburg, PA 17105-3608
DIMENSIONS: INCHES		GRW W. MILLIMETERS	30SEP05	
TOLERANCES UNLESS OTHERWISE SPECIFIED:		APWD W. MILLIMETERS	30SEP05	NAME
0 PLC	± .005	PRODUCT SPEC		HARDWARE KIT, VERTICAL MOUNTING CHAMP
1 PLC	± .005	APPLICATION SPEC		SIZE CASE CODE DRAWING NO
2 PLC	± .005	WEIGHT		A2 00779 C-5552690
3 PLC	± .005	CUSTOMER DRAWING		RESTRICTED TO
4 PLC	± .005			—
ANGLES	± .005			SCALE 4:1 SHEET 1 of 1 REV 0
FINISH				

AMP 1471-9 REV 31MAR2000

5552690

A