

4

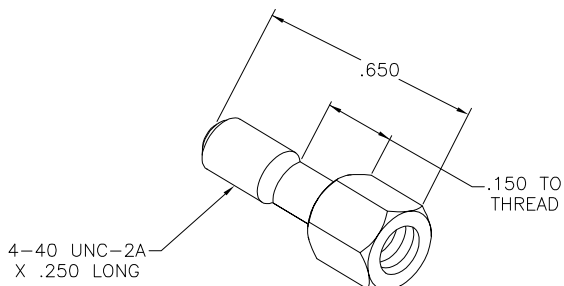
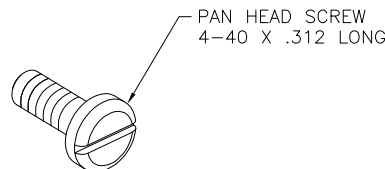
3

2

1

THIS DRAWING IS UNPUBLISHED. RELEASED FOR PUBLICATION
 © COPYRIGHT - BY TYCO ELECTRONICS CORPORATION. ALL RIGHTS RESERVED.

LOC	DIST	REVISIONS				
P	LTR	DESCRIPTION	DATE	DWN	APVD	
GP	00	0	RELEASED PER EC OS13-0288-05	10OCT05	BM	WM



1. ALL DIMENSIONS SHOWN ARE FOR REFERENCE ONLY UNLESS OTHERWISE SPECIFIED.
 2. TWO PIECES OF EACH REQUIRED PER KIT.
 3. ALL HARDWARE SHIPPED UNASSEMBLED.
- △ 4 MATERIAL:
 MOUNTING STUD: ZINC PLATE WITH YELLOW TRIVALENT CHROMATE OVER STEEL.
 PAN HEAD SCREW: PASSIVATED STAINLESS STEEL.

5554272-1
PART NUMBER

THIS DRAWING IS A CONTROLLED DOCUMENT.		OWN B. MCMASTER 10OCT05	Tyco Electronics Corporation Harrisburg, PA 17105-3608	
DIMENSIONS: INCHES	TOLERANCES UNLESS OTHERWISE SPECIFIED:	CHK W. MILLHIMES 10OCT05	APVD W. MILLHIMES 10OCT05	
0 PLC ± -	1 PLC ± -	NAME	EMI HARDWARE KIT, PRE ASSEMBLED, RIGHT ANGLE, 4-40, SCREW LOCK	
2 PLC ± -	3 PLC ± -	PRODUCT SPEC	SIZE CAGE CODE DRAWING NO	
4 PLC ± -	ANGLES ± -	APPLICATION SPEC	A3 00779 C=5554272	
MATERIAL	FINISH	WEIGHT	RESTRICTED TO	
△ 4	-	-	-	
CUSTOMER DRAWING		SCALE	SHEET	REV
		2:1	1 of 1	0

AMP 1470-19 REV 31MAR2000