

4

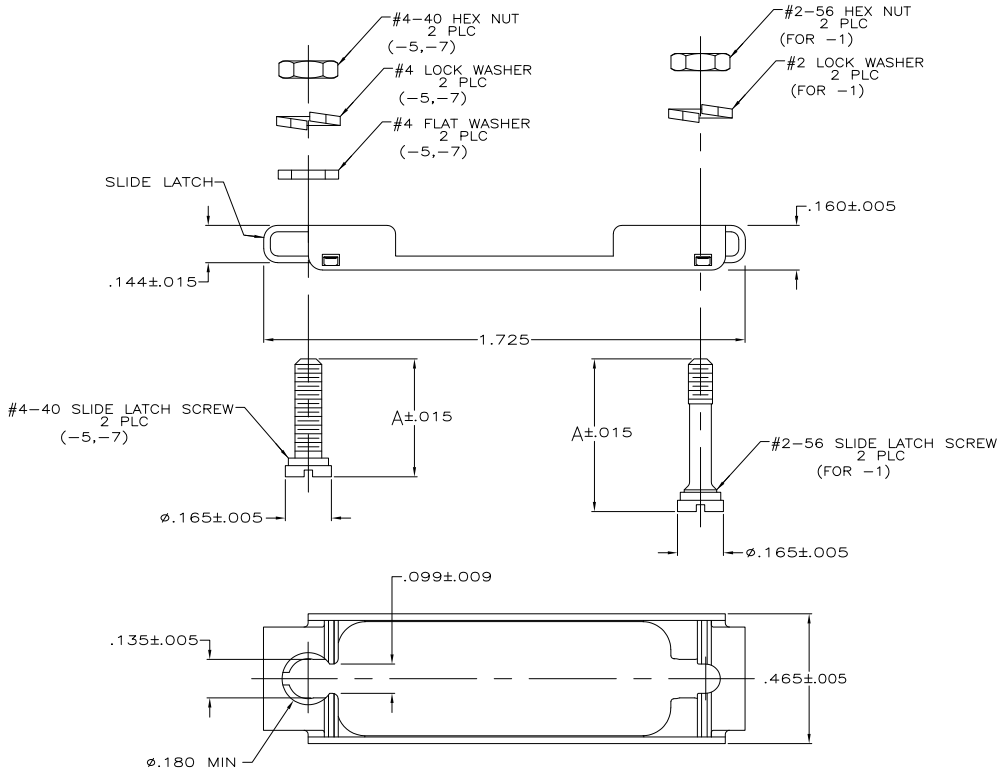
3

2

1

THIS DRAWING IS UNPUBLISHED. RELEASED FOR PUBLICATION. ALL RIGHTS RESERVED.

LOC	DIST	REVISIONS					
GP	00	P	LR	DESCRIPTION	DATE	BY	APPD
		P		REVISED PER ECO-11-004835	11MAR11	RK	HMR



- PARTS PACKAGED UNASSEMBLED.
 - PARTS PACKAGED AS A UNIT KIT.
- ⚠ ZINC PLATED .000200-.000400 THICK, CLEAR CHROMATE COATING.
 - ⚠ ZINC PLATED .000200-.000400 THICK, YELLOW CHROMATE COATING.
 - ⚠ THIS KIT CAN BE USED WITH TWO-PIECE STRAIGHT/90° EXIT CABLE CLAMPS, RFI/EMI CABLE CLAMPS OR UNIVERSAL CABLE CLAMPS.
 - ⚠ THIS KIT CAN BE USED WITH ONE-PIECE STRAIGHT/45° EXIT CABLE CLAMPS, ONE-PIECE STRAIGHT/90° EXIT CABLE CLAMPS OR ON CONNECTORS WITHOUT CABLE CLAMPS.

.450	⚠	#4-40	⚠	5745583-7
.415	⚠	#4-40	⚠	5745583-5
.547	⚠	#2-56	⚠	5745583-1
A		HARDWARE FINISH	THREAD TYPE	PART NUMBER

DIMENSIONS:		TE CONNECTIVITY	
INCHES		TE Connectivity	
MATERIAL: SLIDE LATCH: STAINLESS STEEL HARDWARE: STEEL		FINISH	
FINISH		TYPE	
HARDWARE: SEE TABLE		CUSTOMER DRAWING	
APPROVED:		DATE	
DRAWN:		BY	
CHECKED:		APPD	
DESIGNED:		NAME	
PRODUCT SPEC:		KIT, SLIDE LATCH, SIZE 2, 15 POSITION, AMPLIMITE	
APPLICATION SPEC:		SIZE	
WEIGHT:		CASE CODE	
CUSTOMER DRAWING		DRAWING NO	
SCALE: 4:1		A2 00779 C=5745583	
SHEET 1 of 1		REV P	

1471-9 (3/11)

5745583

B

A