

4

3

2

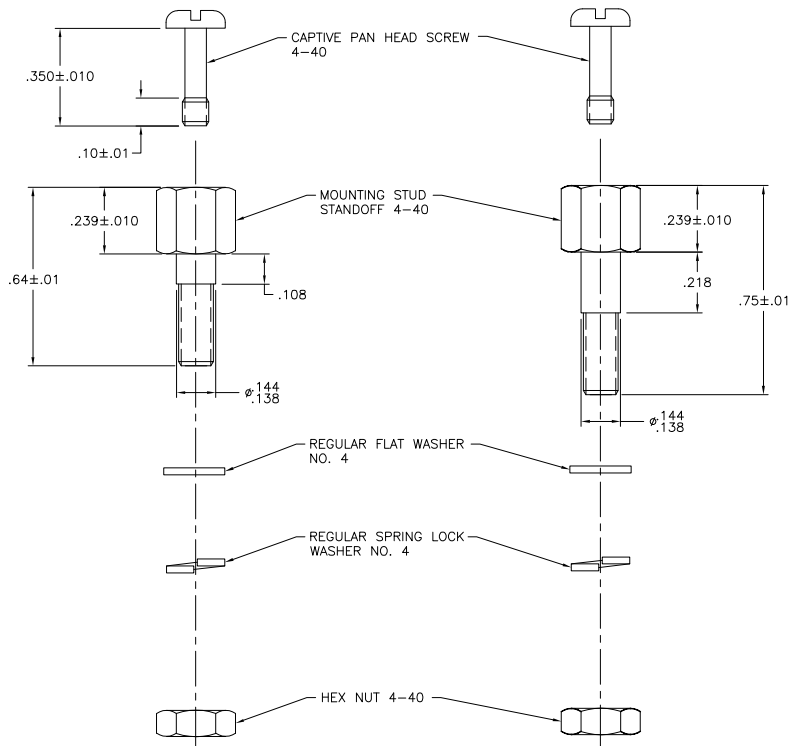
1

THIS DRAWING IS UNPUBLISHED. RELEASED FOR PUBLICATION
 © COPYRIGHT BY TYCO ELECTRONICS CORPORATION. ALL RIGHTS RESERVED.

LOC	DIST	REVISIONS					
GP	00	F	LN	DESCRIPTION	DATE	BY	APP'D
		0		RELEASED PER EC 0513-0288-05	030CT05	BM	WM

1. 2 REQUIRED OF EACH COMPONENT PER KIT.

MATERIAL:
 MOUNTING STUD & SLOTTED MOUNTING STUD: ZINC PLATE WITH YELLOW TRIVALENT CHROMATE OVER STEEL.
 PAN HEAD SCREW, LOCKWASHER, WASHER & HEX NUT: ZINC PLATED STEEL.



KIT P/N 5552568-1
 VIEW A

KIT P/N 5552568-2
 VIEW B

B	5552568-2
A	5552568-1
VIEW	PART NUMBER

THIS DRAWING IS A CONTROLLED DOCUMENT.		DR B. MCMASTER 030CT05	Tyco Electronics Corporation	
DIMENSIONS:		GW. W. MILLIMETERS 030CT05	Harrisburg, PA 17105-3608	
INCHES:		APND W. MILLIMETERS 030CT05	NAME	
TOLERANCES UNLESS OTHERWISE SPECIFIED:		APPLICATION SPEC		
0 PLC ± .005	1 PLC ± .005	PRODUCT SPEC		
2 PLC ± .005	3 PLC ± .005	WEIGHT		
4 PLC ± .005	5 PLC ± .005	CUSTOMER DRAWING		
ANGLE	FINISH	SIZE	CAGE CODE	DRAWING NO
		A2	00779	C-5552568
MATERIAL		RESTRICTED TO	SCALE	
			5:1	
FINISH		SHEET		REV
		1 of 1		0

AMP 1471-9 REV 31MAR2000

5552568

A