

4

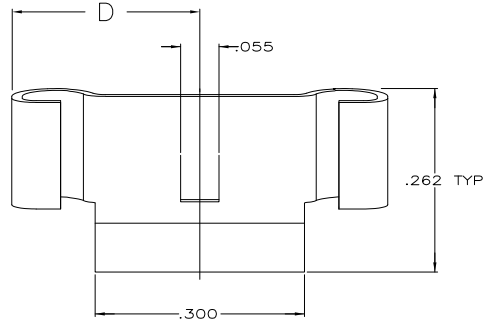
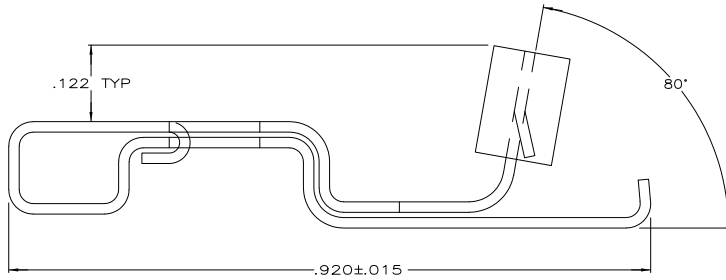
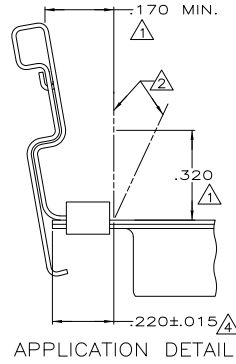
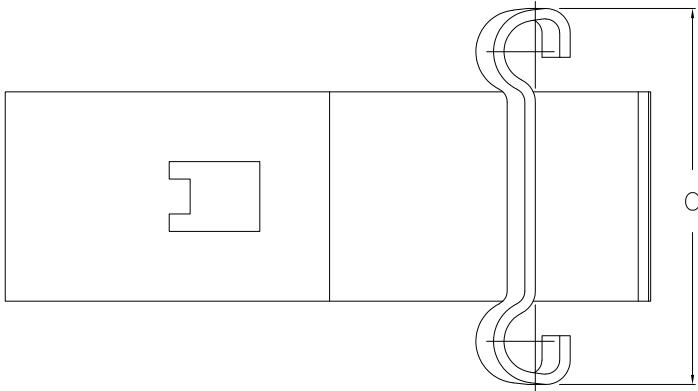
3

2

1

THIS DRAWING IS UNPUBLISHED. RELEASED FOR PUBLICATION
 © COPYRIGHT - By - ALL RIGHTS RESERVED.

LOC		DIBT		REVISIONS			
P	LTR	DESCRIPTION	DATE	BY	APPD		
F1		REVISED PER ECO-11-004835	11MAR11	RK	HMR		



- ⚠ FOR SATISFACTORY OPERATION THESE DIMENSIONS MUST BE MAINTAINED.
- ⚠ .170 DIMENSION SHOULD BE MEASURED AT HEIGHT OF .320 MIN.
- ⚠ SPRING LATCH ACCOUNTS FOR DESIGN VARIATIONS IN THE ENVELOPE OF POST MOLDED STRAIN RELIEFS.
- ⚠ WHEN ORDERING SPRING LATCHES SPECIFY NUMBER OF CONNECTORS, QUANTITY SHIPPED WILL BE BASED ON 2 SPRING LATCHES REQUIRED PER CONNECTOR.
- ⚠ MEASURED FROM END OF CONNECTOR FLANGE TO END OF TAB ON SPRING LATCH.

OBSOLETE	D	C	KIT PACKAGING	PART NO
	.325	.650	BULK	745779-6
	.325	.650	2 PIECE UNIT	745779-5
	.270	.540	BULK	745779-3
	.270	.540	2 PIECE UNIT	745779-2

THIS DRAWING IS A CONTROLLED DOCUMENT.

DESIGNED BY: J. GERACE	DATE: 02-24-83	 TE Connectivity
CHECKED BY: J. GERACE	DATE: 02-24-83	
DRAWN BY: R. LEGGETT	DATE: 02-24-83	SPRING LATCH, 2 PIECE, AMPLIMITE™
PRODUCT SPEC: -	APPLICATION SPEC: -	
MATERIAL: STAINLESS STEEL	FINISH: -	SIZE: A2 CAGE CODE: 00779 DRAWING NO: C=745779
CUSTOMER DRAWING		RESTRICTED TO: - SCALE: 10:1 SHEET: 1 of 1 REV: F1