

THE INFORMATION CONTAINED HEREIN IS CONSIDERED "PROPRIETARY" TO BEL FUSE INC. AND SHALL NOT BE COPIED, REPRODUCED OR DISCLOSED WITHOUT THE WRITTEN APPROVAL OF BEL FUSE INC.

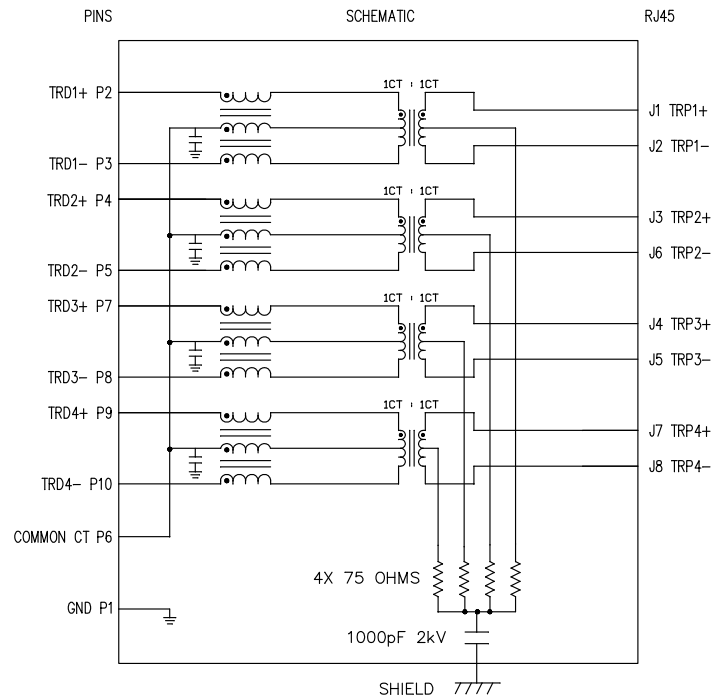


ELECTRICAL SPECIFICATIONS:

DESIGNED FOR OPERATION FROM -40 TO 85 degrees C

- 1.0 INDUCTANCE: (P2-P3) : 350uH MIN. @ 0.1V, 100KHz, 8mA DC Bias
 (P4-P5) : 350uH MIN. @ 0.1V, 100KHz, 8mA DC Bias
 (P7-P8) : 350uH MIN. @ 0.1V, 100KHz, 8mA DC Bias
 (P9-P10) : 350uH MIN. @ 0.1V, 100KHz, 8mA DC Bias
- 2.0 TURNS RATIO: (P2-P3) : (J1-J2) : 1CT : 1CT ± 2%
 (P4-P5) : (J3-J6) : 1CT : 1CT ± 2%
 (P7-P8) : (J4-J5) : 1CT : 1CT ± 2%
 (P9-P10) : (J7-J8) : 1CT : 1CT ± 2%
- 3.0 RETURN LOSS: 100 OHM REF.
 500kHz TO 40MHz : -18dB MIN.
 40MHz TO 100MHz : -12+20LOG(f/80MHZ) MIN.
- 4.0 INSERTION LOSS: RS=RL=100 OHMS
 100kHz TO 100MHz : 1.2dB MAX.
- 5.0 CROSS TALK: Ch1-Ch2, Ch1-Ch3, Ch1-Ch4, Ch2-Ch3, Ch2-Ch4, Ch3-Ch4
 1MHz TO 30MHz : -35dB MIN.
 30MHz TO 80MHz : -24dB MIN.
 80MHz TO 100MHz : -25dB MIN.
- 6.0 CM TO CM REJECTION: 100kHz TO 100MHz : -30dB MIN.
- 7.0 CM TO DM REJECTION: 100kHz TO 100MHz : -35dB MIN.
- 8.0 VOLTAGE WITHSTAND: (J1, J2) TO (P2, P3) : 1500 Vrms
 (J3, J6) TO (P4, P5) : 1500 Vrms
 (J4, J5) TO (P7, P8) : 1500 Vrms
 (J7, J8) TO (P9, P10) : 1500 Vrms

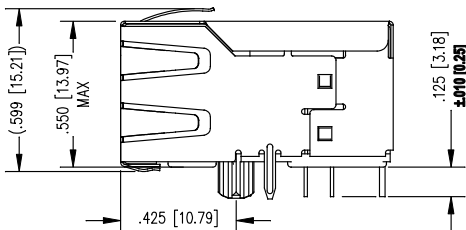
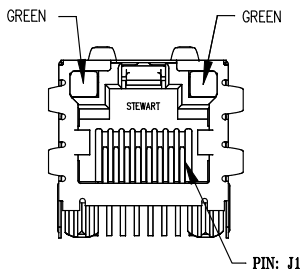
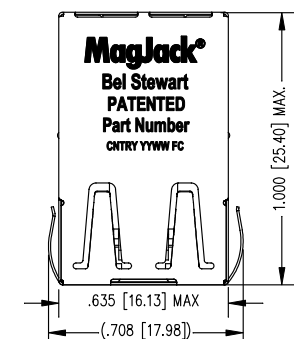
9.0 THIS COMPONENT IS A PATENT PRODUCT;US PATENT NUMBER 7,123,117.



ORIGINATED BY RS Zhang	DATE 04-06-10	TITLE MagJack® TAB UP SHIELDED 10/100/100BT PATENTED	PART NO. / DRAWING NO. SI-51021-F	STANDARD DIM. TOL. IN INCH .X .XX .XXX ±0.005	[] METRIC DIM. AS REFERENCE UNIT : INCH [mm] SCALE : N/A REV. : 01 SIZE : A4 PAGE : 2	bel COMPONENTS FOR A CONNECTED PLANET
DRAWN BY RS Zhang	DATE 04-06-10		FILE NAME SI-51021-F.DWG			

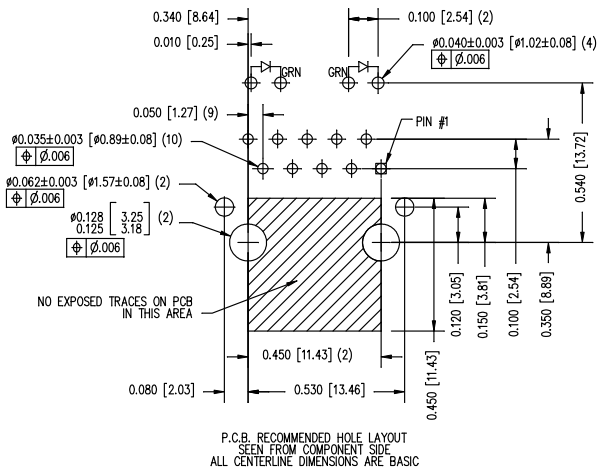
FM990185 REV B1 This document is electronically generated. This is a controlled copy if used internally

THE INFORMATION CONTAINED HEREIN IS CONSIDERED "PROPRIETARY" TO BEL FUSE INC. AND SHALL NOT BE COPIED, REPRODUCED OR DISCLOSED WITHOUT THE WRITTEN APPROVAL OF BEL FUSE INC.



LED SPECIFICATION			
STANDARD LED	WAVELENGTH	FORWARD V (MAX)	* (TYP)
GREEN	565 nm	2.5 V	2.2 V

*WITH A FORWARD CURRENT OF 20 mA (TYP)



P.C.B. RECOMMENDED HOLE LAYOUT
SEEN FROM COMPONENT SIDE
ALL CENTERLINE DIMENSIONS ARE BASIC

NOTES:

- CONNECTOR MATERIALS:
HOUSING: THERMOPLASTIC UL94 V-0
CONTACT/SHIELD: COPPER ALLOY
SHIELD PLATING: NICKEL OR TIN
CONTACT PLATING: SELECTIVE GOLD,
50 MICRO-INCHES MIN. IN CONTACT AREA.
- PIN NOT ELECTRICALLY CONNECTED MAYBE OMITTED.
SEE ELECTRICAL DRAWING FOR OMITTED PINS.
- TOLERANCES COMPLY WITH F.C.C. DIMENSION REQUIREMENTS.
- ALL TOLERANCES NOT OTHERWISE SPECIFIED TO BE ±.005 [0.13]
- REFLOW AND WAVE SOLDER COMPATIBLE -260°C FOR 10 SECONDS MAX.

ORIGINATED BY	DATE	TITLE
RS Zhang	04-06-10	MagJack® TAB UP SHIELDED 10/100/100BT PATENTED
DRAWN BY	DATE	
RS Zhang	04-06-10	

PART NO. / DRAWING NO.	STANDARD DIM. TOL. IN INCH	[] METRIC DIM. AS REFERENCE
SI-51021-F	.X .XX .XXX ±0.005	UNIT : INCH [mm] SCALE : N/A
FILE NAME		REV. : 01 SIZE : A4 PAGE : 3
SI-51021-F.DWG		

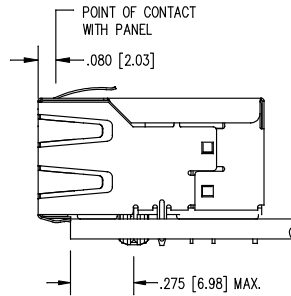
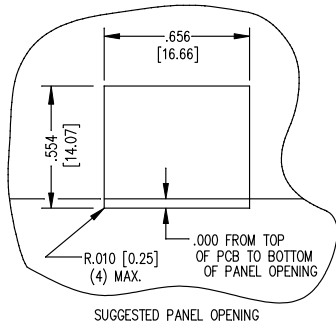
UNIT : INCH [mm]	REV. : 01
SCALE : N/A	SIZE : A4
	PAGE : 3

COMPONENTS FOR A COMPLETE PLANET	

FM999185 REV B1

This document is electronically generated. This is a controlled copy if used internally

THE INFORMATION CONTAINED HEREIN IS CONSIDERED "PROPRIETARY" TO BEL FUSE INC. AND SHALL NOT BE COPIED, REPRODUCED OR DISCLOSED WITHOUT THE WRITTEN APPROVAL OF BEL FUSE INC.



1. THE SUGGESTED PANEL OPENING IS INTENDED TO GIVE THE USER THE ABILITY TO HAVE REASONABLE JACK / PANEL CLEARANCES YET MAINTAIN RELIABLE GROUNDING CAPABILITY.
2. ALL TOLERANCES NOT OTHERWISE SPECIFIED TO BE ± 0.005 [0.13]

ORIGINATED BY	DATE	TITLE	PART NO. / DRAWING NO.	STANDARD DIM. TOL. IN INCH	[] METRIC DIM. AS REFERENCE
RS Zhang	04-06-10	MagJack® TAB UP SHIELDED 10/100/100BT PATENTED	SI-51021-F	.X	UNIT : INCH [mm]
DRAWN BY	DATE		FILE NAME	.XX	SCALE : N/A
RS Zhang	04-06-10		SI-51021-F.DWG	.XXX ±0.005	REV. : 01
					SIZE : A4
					PAGE : 4



FM996185 REV B1

This document is electronically generated. This is a controlled copy if used internally