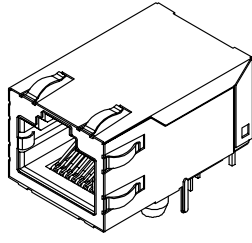
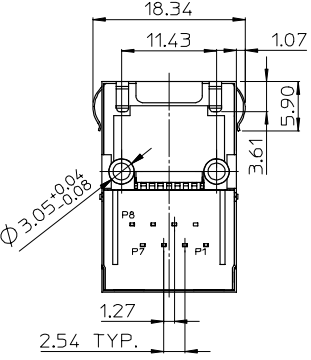
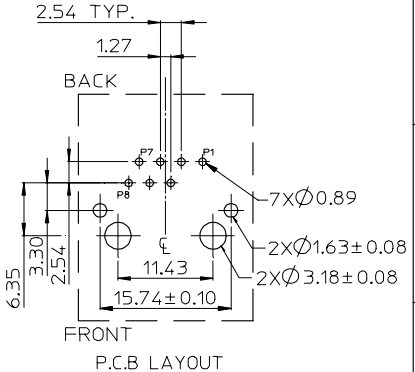
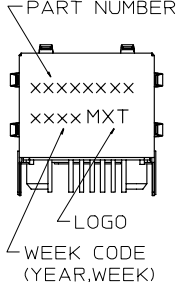
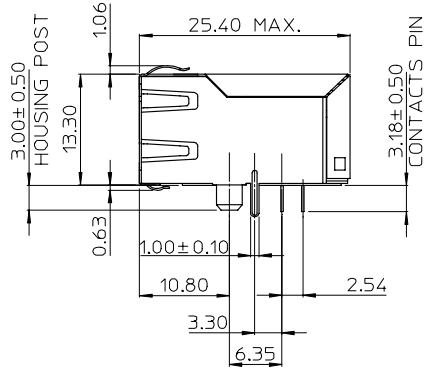
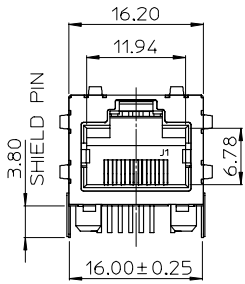


10 9 8 7 6 5 4 3 2 1



- NOTES:
- MATERIAL:
    - METAL SHELL: BRASS
    - HOUSING: POLYAMIDE, GLASS FIBER FILLED, UL94-0,COLOR BLACK
    - INSERT: POLYAMIDE, GLASS FIBER FILLED, UL94-0,COLOR BLACK
    - TERMINAL: PHOSPHOR BRONZE
  - PLATING:
    - TERMINAL:
      - CONTACT AREA: GOLD(Au),THICKNESS=50 MICROINCH/1.27 MICROMETER
      - SOLDER TAIL: TIN(Sn),THICKNESS=100 MICROINCH MINIMUM
      - UNDER PLATE: NICKEL (Ni).
    - METAL SHELL:
      - SOLDER TAIL: TIN(Sn),THICKNESS=100 MICROINCH MINIMUM
      - UNDER PLATE: NICKEL (Ni),(SOLDERING AVAILABLE)
      - SURFACE APPEARANCE: BRIGHT.
  - RECOMMENDED PCB THICKNESS: 1.60±0.05
  - PRODUCT SPECIFICATION REFER TO PS-48025-005
  - TEST SUMMARY REFER TO TS-48025-011
  - PACKAGING SPECIFICATION REFER TO PK-48025-001
  - LEAD FREE AND ROHS COMPLIANT PRODUCT.

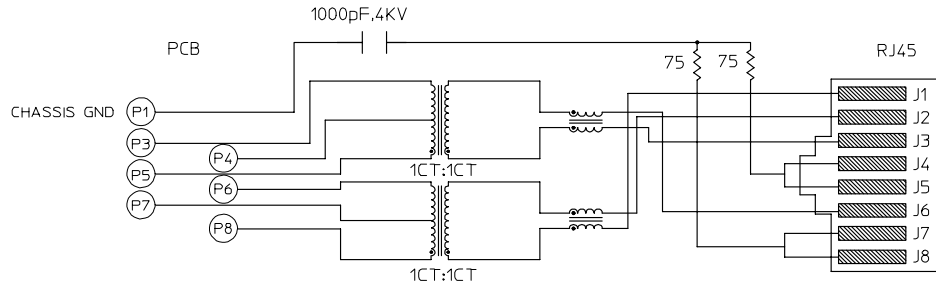
|   |                 |  |  |                    |  |                        |
|---|-----------------|--|--|--------------------|--|------------------------|
| RoHS FOR 48025-3000<br>EC NO. SH2007-0129<br>DRAWN: LINDA<br>CHKD: ALLEN LIN<br>APPR: ERICK LAN<br>2006/10/04<br>2006/10/04<br>2006/10/10 | QUALITY SYMBOLS | GENERAL TOLERANCES (UNLESS SPECIFIED)  | DIMENSION STYLE  | SCALE              | DESIGN UNITS   | THIRD ANGLE PROJECTION |
|   | ▽=0<br>▽=0      | mm    INCH<br>4 PLACES ± --- ± ---<br>3 PLACES ± --- ± ---<br>2 PLACES ± 0.25 ± ---<br>1 PLACE ± 0.25 ± ---<br>ANGULAR ± 3 ° | MM ONLY  |                    | METRIC   |                        |
|   | DESCRIPTION     | DRAFT WHERE APPLICABLE MUST REMAIN WITHIN DIMENSIONS   | DRAWN BY: LINDA    DATE: 2006/08/08<br>CHECKED BY: ALLEN LIN    DATE: 2006/08/10<br>APPROVED BY: ERICK LAN    DATE: 2006/08/10 | TITLE              | MODULAR JACK (4KV) WITH INTEGRATED MAGNETICS WITHOUT LED |                        |
|   | REV             |  | MATERIAL NO. 48025-3090  | MOLEX INCORPORATED | DOCUMENT NO. SD-48025-011                                | SHEET NO. 1 OF 2       |

9 8 7 6 5 4 3 2 1

10 9 8 7 6 5 4 3 2 1

ELECTRICAL SPECIFICATIONS:

- 1.0 TURNS RATIO:(P5-P4-P3):(J3-J6):1CT:1CT  
(P8-P7-P6):(J1-J2):1CT:1CT
- 2.0 INDUCTANCE:(P8-P6):350uH MIN. @0.1V,100KHz,8mA DC Bias.  
(P3-P5):350uH MIN. @0.1V,100KHz,8mA DC Bias.
- 3.0 LEAKAGE INDUCTANCE:P5-P3(WITH J6 AND J3 SHORT):0.3 MAX.@1MHz.  
P8-P6(WITH J2 AND J1 SHORT):0.3 MAX.@1MHz.
- 4.0 INTERWINNING CAPACITANCE:(P5,P4,P3) TO (J6,J3):30pf MAX @1MHz.  
(P8,P7,P6) TO (J2,J1):30pf MAX @1MHz.
- 5.0 DC RESISTANCE:(J6-J3)=(J2-J1):1.2 ohms Max.
- 6.0 RETURN LOSS:(P5-P3)=100 OHMS(P8-P6)=100 OHM REF.  
1MHz TO 30MHz:18db min.:18dB MIN.  
30MHz TO 80MHz:12db min.:12dB MIN.  
NOTE:100 OHMS CONNECTED TO (J2-J1) TO (J6-J3).
- 7.0 HI-POT:(J1,J2) TO (P8,P6):1500 VAC.  
(J3,J6) TO (P5,P3):1500 VAC.
- 8.0 INSERTION LOSS:RS=RL=100 ohms:1.1 dB MAX.  
100KHz TO 100MHz.
- 9.0 CROSS TALK:1-100 MHz:30 dB MIN.
- 10.0 COMMON TO COMMON MODE REJECTION:1MHz TO 100MHz:35 dB MIN.



MAGNETIC SCHEMATIC

| SEE SHEET 1<br>EC NO. SH2007-0129<br>DRWN:ALLIN<br>CHKD:<br>APPR:WFSCHANG<br>2006/10/04<br>2006/10/04<br>2006/10/04 | QUALITY SYMBOLS   | GENERAL TOLERANCES (UNLESS SPECIFIED)   | DIMENSION STYLE<br>MM ONLY | SCALE<br>1:1 | DESIGN UNITS<br>METRIC | THIRD ANGLE PROJECTION |       |       |          |       |       |          |        |       |         |        |       |               |  |  |  |   |                    |  |
|---|---|---|----------------------------|--------------|------------------------|------------------------|-------|-------|----------|-------|-------|----------|--------|-------|---------|--------|-------|---------------|--|--|--|---|--------------------|--|
|   | $\nabla=0$<br>$\nabla=0$  | <table border="1"> <tr> <th></th> <th>mm</th> <th>INCH</th> </tr> <tr> <td>4 PLACES</td> <td>± ---</td> <td>± ---</td> </tr> <tr> <td>3 PLACES</td> <td>± ---</td> <td>± ---</td> </tr> <tr> <td>2 PLACES</td> <td>± 0.25</td> <td>± ---</td> </tr> <tr> <td>1 PLACE</td> <td>± 0.25</td> <td>± ---</td> </tr> <tr> <td colspan="3">ANGULAR ± 3 °</td> </tr> </table> |                            | mm           | INCH                   | 4 PLACES               | ± --- | ± --- | 3 PLACES | ± --- | ± --- | 2 PLACES | ± 0.25 | ± --- | 1 PLACE | ± 0.25 | ± --- | ANGULAR ± 3 ° |  |  | DRAWN BY<br>LINDA<br>DATE<br>2006/08/08<br>CHECKED BY<br>ALLEN LIN<br>DATE<br>2006/08/10<br>APPROVED BY<br>ERICK LAN<br>DATE<br>2006/08/10 | TITLE<br>MODULAR JACK (4KV) WITH INTEGRATED MAGNETICS WITHOUT LED | MOLEX INCORPORATED |  |
|   |   | mm  | INCH                       |              |                        |                        |       |       |          |       |       |          |        |       |         |        |       |               |  |  |  |   |                    |  |
|   | 4 PLACES  | ± ---   | ± ---                      |              |                        |                        |       |       |          |       |       |          |        |       |         |        |       |               |  |  |  |   |                    |  |
| 3 PLACES  | ± ---   | ± ---   |                            |              |                        |                        |       |       |          |       |       |          |        |       |         |        |       |               |  |  |  |   |                    |  |
| 2 PLACES  | ± 0.25  | ± ---   |                            |              |                        |                        |       |       |          |       |       |          |        |       |         |        |       |               |  |  |  |   |                    |  |
| 1 PLACE   | ± 0.25  | ± ---   |                            |              |                        |                        |       |       |          |       |       |          |        |       |         |        |       |               |  |  |  |   |                    |  |
| ANGULAR ± 3 °   |   |   |                            |              |                        |                        |       |       |          |       |       |          |        |       |         |        |       |               |  |  |  |   |                    |  |
| DRAFT WHERE APPLICABLE MUST REMAIN WITHIN DIMENSIONS  | MATERIAL NO.<br>48025-3090  | DOCUMENT NO.<br>SD-48025-011  | SHEET NO.<br>2 OF 2        |              |                        |                        |       |       |          |       |       |          |        |       |         |        |       |               |  |  |  |   |                    |  |
|   | THIS DRAWING CONTAINS INFORMATION THAT IS PROPRIETARY TO MOLEX INCORPORATED AND SHOULD NOT BE USED WITHOUT WRITTEN PERMISSION |   |                            |              |                        |                        |       |       |          |       |       |          |        |       |         |        |       |               |  |  |  |   |                    |  |

9 8 7 6 5 4 3 2 1