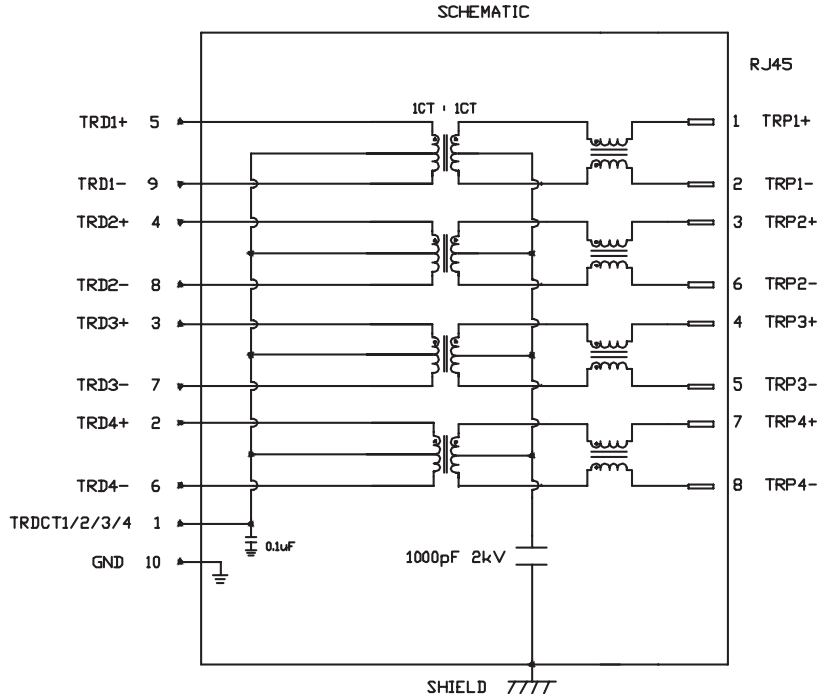


**INTEGRATED CONNECTOR MODULES**  
**V891-1XX1-A1 Gigabit Ethernet Vertical Mount Single Port MagJack®**



**ELECTRICAL CHARACTERISTICS @ 25°C**

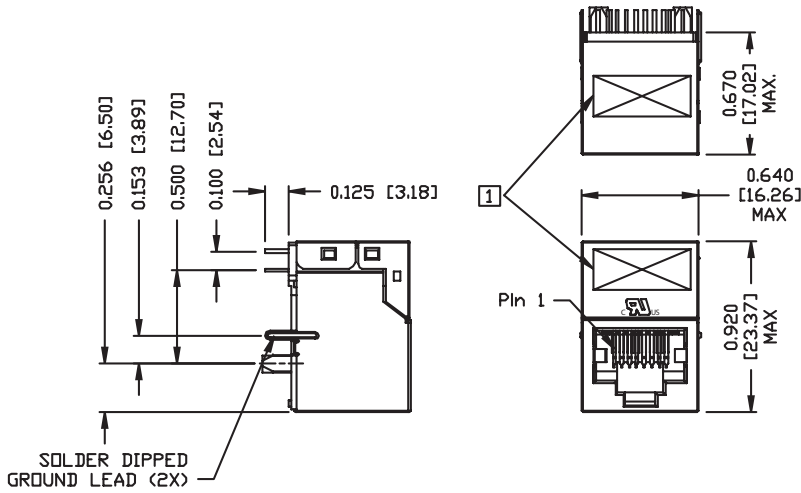
<b>URNS RATIO</b>	
TP1	1CT : 1CT ±3%
TP2	1CT : 1CT ±3%
TP3	1CT : 1CT ±3%
TP4	1CT : 1CT ±3%
<b>DCL @ 100kHz/100mVRMS</b>	
8mA DC BIAS	350 μH MIN.
<b>INS. LOSS</b>	
1MHz TO 100MHz	-1.1 dB MAX
<b>RET. LOSS (MIN)</b>	
1MHz-40MHz	-18 dB
40MHz-100MHz	-12+20LOG(F/80MHz) dB
<b>CM TO CM REJ</b>	
1MHz - 100MHz	-20 dB MIN
<b>CROSSTALK (TX - RX)</b>	
1MHz - 30MHz	-40 dB MIN
30MHz - 60MHz	-30 dB MIN
<b>HIPOT (Isolation Voltage)</b> 1500 Vrms	
100% OF PRODUCT TESTED IN PRODUCTION	



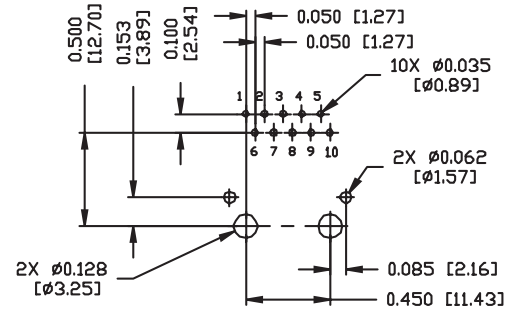
**INTEGRATED CONNECTOR MODULES**  
**V891-1XX1-A1 Gigabit Ethernet Vertical Mount Single Port MagJack®**



**MECHANICAL SPECIFICATION**



**RECOMMENDED PCB FOOTPRINT  
 COMPONENT SIDE VIEW**



**NOTES**

- PLASTIC HOUSING: THERMOPLASTIC PBT, FLAMMABILITY RATING UL 94V-0
- CONTACTS: 30 MICRO-INCH HARD GOLD PLATING
- OUTPUT PINS: TIN-COATED COPPER WIRE, DIA 0.018 INCH.
- METAL SHIELD: NICKEL PLATED ON COPPER ALLOY. (ALL GROUND LEADS ARE SOLDER DIPPED)
- ☐ MARK PART WITH MFG LOGO, MFG NAME, PART NUMBER, AND DATE CODE.
- RoHS COMPLIANCE, PER EU DIRECTIVE 2002/95/EC.

**PACKING INFORMATION**

- PACKING TRAY : 0200-9999-13(TOP)  
 0200-9999-14(BOTTOM)
- PACKING QUANTITY : 55 PCS FINISHED GOODS PER TRAY  
 9 TRAY (495 PCS FINISHED GOODS) PER CARTON BOX
- NOTE: CARDBOARDS ARE PLACED BETWEEN LAYERS OF PACKING TRAY INSIDE CARTON BOX (INCLUDE THE UPPERMOST AND LOWERMOST TRAY)