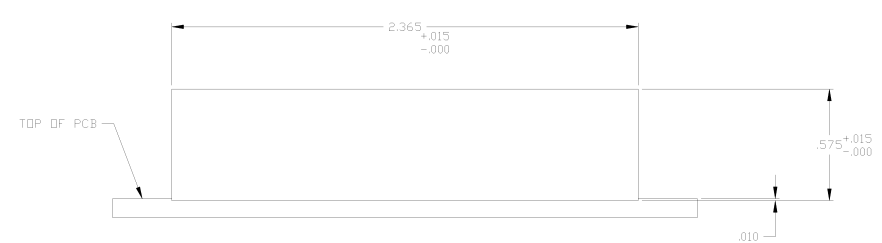
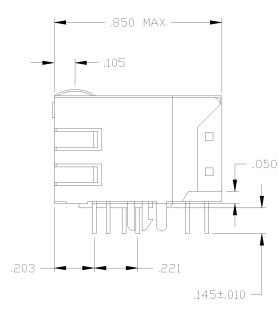
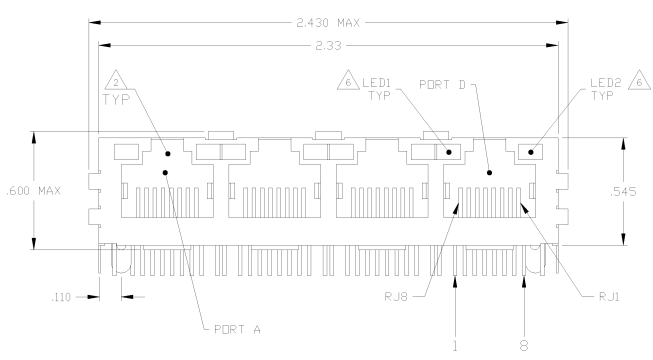
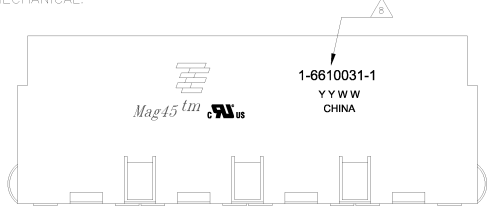


REV	DATE	BY	CHKD	REVISIONS
AA	2.2	TX	SW	REVISED PER ECO-09-024927

REV	DATE	BY	CHKD	REVISIONS
AA	2.2	TX	SW	REVISED PER ECO-09-024927
B				REV PER ECO-08-015869
B1				REVISED PER ECO-09-024927

MECHANICAL:



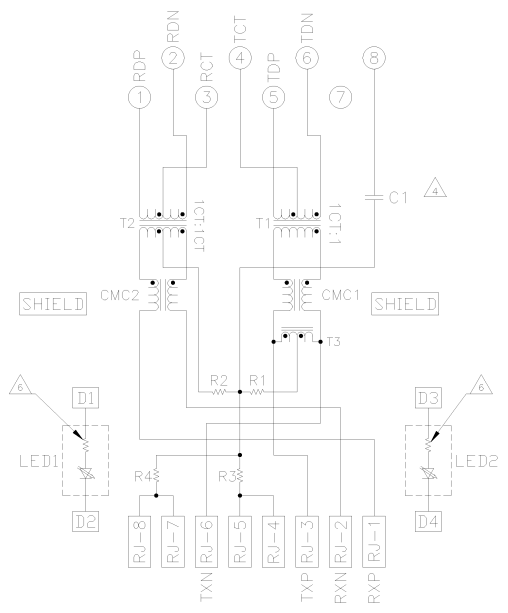
1X4 SUGGESTED PANEL CUTOUT

- 1. MATERIALS
 - HOUSING - THERMOPLASTIC PET POLYESTER FLAMMABILITY RATING UL 94V-0
 - SHIELD - .010" THICK C28800 BRASS PREPLATED WITH .001" MIN SEMI-BRIGHT NICKEL
 - SOLDER TABS POST DIPPED WITH .001" MIN SAC SOLDER
 - MOD JACK CONTACTS - 0.015" X 0.015" PHOSPHOR BRONZE, .015" MIN OVERALL NICKEL UNDERPLATE WITH SELECT .05" MIN HARD GOLD FINISH PLATE. SOLDER TABS WITH .001" MIN NATE TIN AND/OR SAC SOLDER DIP
 - LIGHT EMITTING DIODE(LED) - DIFFUSED EPOXY LENS, .010" X .020" CARBON STEEL WIREFRAME LEADS PRE-PLATED WITH .001" MIN SILVER OVER .001" MIN NICKEL UNDERPLATE OVER .001" MIN COPPER UNDERPLATE. POST-PLATED WITH .001" MIN NATE TIN AND/OR SAC SOLDER DIP OR PURE TIN SOLDER DIP.
- 2. R/45 JACK CAVITY CONFORMS TO FCC RULES AND REGULATIONS PART 68, SUB PART F.
- 3. MAGNETICS
 - IMPEDANCE: 100 OHMS
 - TURNS RATIO (CHIP CABLE): TX = 11, RX = 11
 - OPEN CIRCUIT INDUCTANCE (OCL): 35µH MIN @100kHz, 0.1VRMS
 - SHADE BIAS FROM 0µC TO 70µC, TX AND RX
 - PERFORMANCE @ 25°C
 - INSERTION LOSS (IL1): 1.5dB MAX FROM 0.5MHz TO 100MHz
 - RETURN LOSS (RL): 18dB MIN FROM 0.5MHz TO 30MHz
 - ISOLATION FROM 40 MHz TO 30MHz
 - CROSSTALK ATTENUATION: 35dB MIN FROM 0.5MHz TO 10MHz
 - 33-20*LOG(F/50)dB MIN FROM 40 MHz TO 100MHz
 - COMMON MODE REJECTION RATIO (CMRR): 30dB MIN FROM 0.5MHz TO 100MHz
 - ISOLATION VOLTAGE: COMPLIES WITH IEEE802.3 2002, PARA 23.5.1.1, ITEM b.
- 4. C115 IS AN OPTIONAL CAPACITOR. IF NO CAPACITOR, TRACE IS CONTINUOUS. SEE TABLE FOR PRESENCE OF CAPACITOR IN DIFFERENT CONFIGURATIONS.
- 5. OPERATING TEMPERATURE FROM 0 TO +70°C
- 6. THE 250 OHM RESISTORS ARE OPTIONAL. PLEASE SEE CHART FOR PRESENCE OR ABSENCE OF LED RESISTORS. IF THE LED WITHOUT 250 OHM RESISTORS, LED IS DRIVEN WITH CONSTANT CURRENT AT APPROX 20mA.
 - LED COLOR - DOMINANT WAVELENGTH (nm): GREEN 548 nm TYP @ IF=20mA
 - FORWARD VOLTAGE (Vf): GREEN 2.2V TYP @ IF=20mA
 - DOMINANT WAVELENGTH (nm): YELLOW 588 nm TYP @ IF=20mA
 - FORWARD VOLTAGE (Vf): YELLOW 2.1V TYP @ IF=20mA
 - DOMINANT WAVELENGTH (nm): ORANGE 605 nm TYP @ IF=20mA
 - FORWARD VOLTAGE (Vf): ORANGE 2.05V TYP @ IF=20mA
- IF THE LED WITH 250 OHM RESISTORS, LED IS DRIVEN WITH 5V VOLTAGE AND THE MAX OPERATING CURRENT IS 20mA.
 - LED COLOR - DOMINANT WAVELENGTH (nm): GREEN 548 nm TYP @ Vf=5V
 - FORWARD CURRENT (If): GREEN 13 mA TYP @ Vf=5V
 - DOMINANT WAVELENGTH (nm): YELLOW 588 nm TYP @ Vf=5V
 - FORWARD CURRENT (If): YELLOW 13 mA TYP @ Vf=5V
- 7. INDICATED CONNECTIONS ARE FOR HUB CONFIGURATION. THE MAGNETICS ARE ASYMMETRICAL AND DO NOT SUPPORT AUTO-HUB/POK.
- 8. TYCO ELECTRONICS LOGO, PART NUMBER, DATE CODE, COUNTRY OF ORIGIN AND AGENCY APPROVAL MARKING IN APPROXIMATE LOCATION SHOWN.
- 9. THESE PARTS ARE RECOMMENDED FOR WAVE SOLDERING PROCESS. PEAK WAVE SOLDERING TEMPERATURE IS 265°C, 10SECONDS MAX.
- 10. OBSOLETE PARTS: OBSOLETE CIS STREAMLINING PER D.RENAUD/D.SINISI

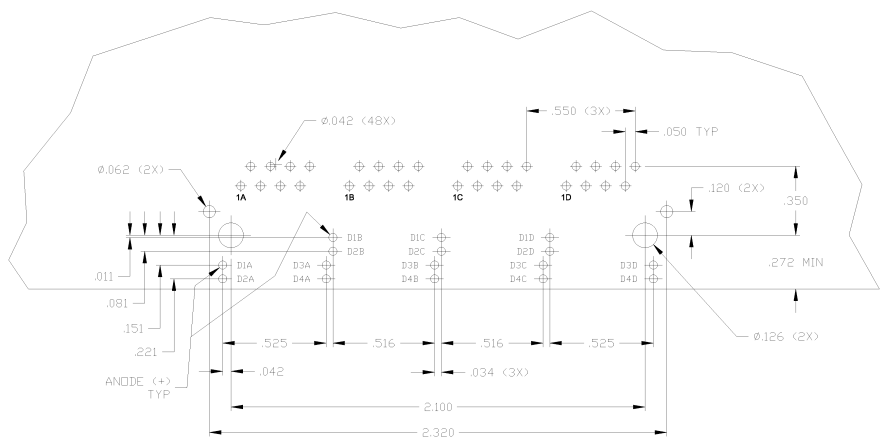
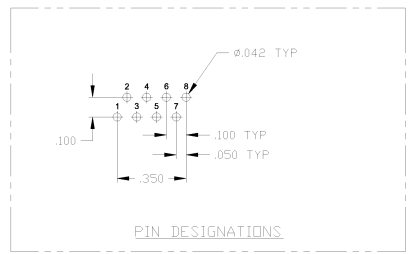
OBSOLETE	YES	YES	GREEN	GREEN	6-6610031-1
	NO	YES	GREEN	GREEN	5-6610031-2
OBSOLETE	YES	YES	YELLOW	GREEN	5-6610031-2
	YES	YES	GREEN	YELLOW	5-6610031-1
OBSOLETE	YES	NO	GREEN	GREEN	4-6610031-1
	YES	NO	GREEN	GREEN	4-6610031-1

THIS DRAWING IS A CONTROLLED DOCUMENT		REV	DATE	BY	CHKD	REVISIONS
UNLESS NOTED OTHERWISE	INDICATED UNLESS NOTED OTHERWISE	AA	2.2	TX	SW	REVISED PER ECO-09-024927
REV	DATE	BY	CHKD	REVISIONS	1X4 MAG45(TM) MODULAR JACK, THIS SCHEMATIC, 54 SERIES CIRCUIT, OPTIONAL DECOUPLING CAPACITOR, SHIELDED WITH LEADS	
REV	DATE	BY	CHKD	REVISIONS	100778 1-6610031	
REV	DATE	BY	CHKD	REVISIONS	CUSTOMER DRAWING	

754 SERIES MAGNETIC CIRCUIT



C1 = 1000pF, 2kV DECOUPLING CAPACITOR
 R1-R4 = 75 OHMS, 1/16W, 5% RESISTORS



SUGGESTED PCB LAYOUT
 (Component Side)

THIS DRAWING IS A CONTROLLED DOCUMENT		REV	DATE	BY	APP	REVISIONS
UNREVISIONED	REVISIONS	AA	2.2	TM	SM	REWORK
PROCESSED	UNREVISIONED					SEE SHEET 1
DATE	BY	APP	REV	DATE	BY	APP