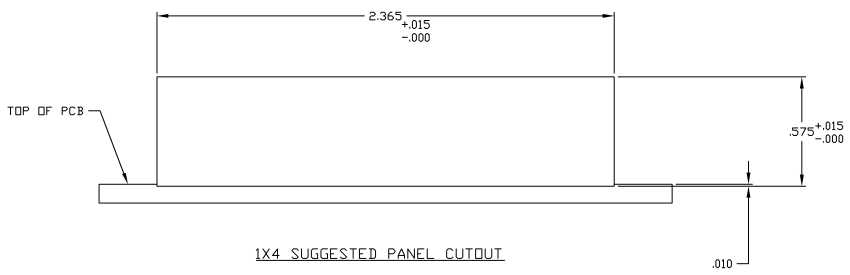
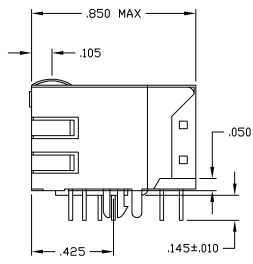
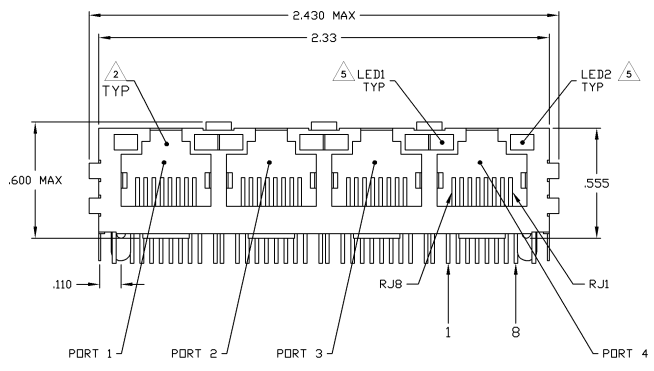
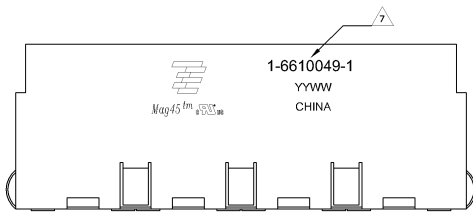


MECHANICAL:



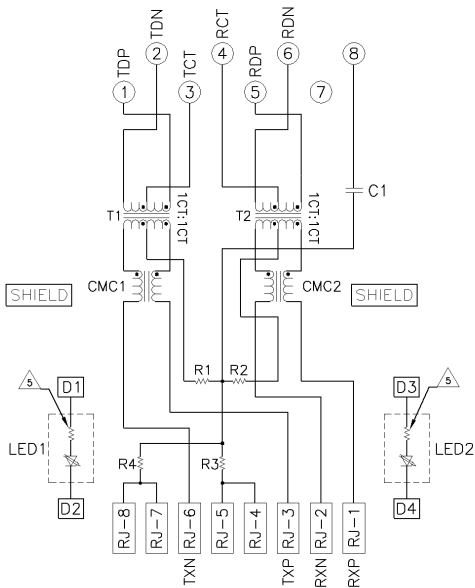
- NOTES
- 1. MATERIALS**
 - HOUSING - THERMOPLASTIC PET POLYESTER FLAMMABILITY RATING UL 94V-0
 - SHIELD - .012" THICK (2680 BRASS) PREPLATED WITH .30MIL MIN SEMI-BRIGHT NICKEL
 - SOLDER TABS POST DIPPED WITH 10MIL MIN SAC SOLDER
 - JACK CONTACTS - .0057" X .018" PHOSPHOR BRONZE .50MIL MIN OVERALL NICKEL
 UNDERPLATE WITH SELECT .50MIL MIN HARD GOLD FINISH PLATE. SOLDER TAILS WITH
 10MIL MIN MATTIE TIN AND/OR SAC SOLDER DIP
 - LIGHT EMITTING DIODES - DIFFUSED EPOXY LENS .02" X .02" CARBON STEEL WIREFRAME
 LEADS PRE-PLATED WITH .80MIL SILVER OVER .40MIL NICKEL UNDERPLATE OVER .40MIL
 COPPER UNDERPLATE. POST-PLATED WITH 10MIL MIN MATTIE TIN AND/OR SAC SOLDER DIP OR
 PURE TIN SOLDER DIP
 - 2. RJ45 JACK CAVITY CONFORMS TO FCC RULES AND REGULATIONS PART 68, SUB PART F**
 - 3. MAGNETICS**
 - IMPEDANCE: 100 OHMS
 - TURNS RATIO (CHP CABLE) TX = 11, RX = 11
 - OPEN CIRCUIT INDUCTANCE (OCIL) 350pH MIN @ 100MHz, 0 TVRMS.
 BRIDGE BIAS FROM 0V TO 70V, TX AND RX
 - PERFORMANCE @ 25°C
 INSERTION LOSS (IL) 1.8dB MAX FROM 0.5MHz TO 100MHz
 RETURN LOSS (RL) 30dB MIN FROM 0.5MHz TO 50MHz
 18-20.0dB/30dB MIN FROM 30.1MHz TO 60MHz
 10dB MIN FROM 60.1MHz TO 80MHz
 CROSSTALK ATTENUATION: 35dB MIN FROM 0.5MHz TO 40MHz
 33-24.0dB/50dB MIN FROM 40.1MHz TO 100MHz
 COMMON MODE REJECTION RATIO (CMRR) 30dB MIN FROM 0.5MHz TO 100MHz
 - ISOLATION VOLTAGE: COMPLIES WITH IEEE802.3 2002, PARA 23.1.1 ITEM B
 - 4. OPERATING TEMPERATURE: FROM 0°C TO +70°C**
 - 5. LED IS DRIVEN WITH 5V VOLTAGE AND THE MAX OPERATING CURRENT IS 20mA**
 LED COLOR: DOMINANT WAVELENGTH (λD) GREEN 568 nm TYP. at VF=5V
 FORWARD CURRENT (IF) GREEN 12 mA TYP. at VF=5V
 DOMINANT WAVELENGTH (λD) YELLOW 588 nm TYP. at VF=5V
 FORWARD CURRENT (IF) YELLOW 13 mA TYP. at VF=5V
 - 6. INDICATED CONNECTIONS ARE FOR HUB CONFIGURATION. HOWEVER, THE MAGNETICS ARE SYMMETRICAL TO ACCOMMODATE CONNECTIONS FOR EITHER NIC OR HUB CONFIGURATION, OR AUTO-HUB/MDIX.**
 - 7. TYCO ELECTRONICS LOGO, PART NUMBER, DATE CODE, COUNTRY OF ORIGIN AND AGENCY APPROVAL MARKING IN APPROXIMATE LOCATION SHOWN.**
 - 8. THESE PARTS ARE RECOMMENDED FOR WAVE SOLDERING PROCESS. PREHEAT TEMPERATURE IS 125°C TO 160°C, 120 SECONDS TO 180 SECONDS. PEAK WAVE SOLDERING TEMPERATURE IS 265°C MAX. 10 SECONDS MAX.**

YES	GREEN	YELLOW	5-6610049-1
NO	GREEN	GREEN	1-6610049-1

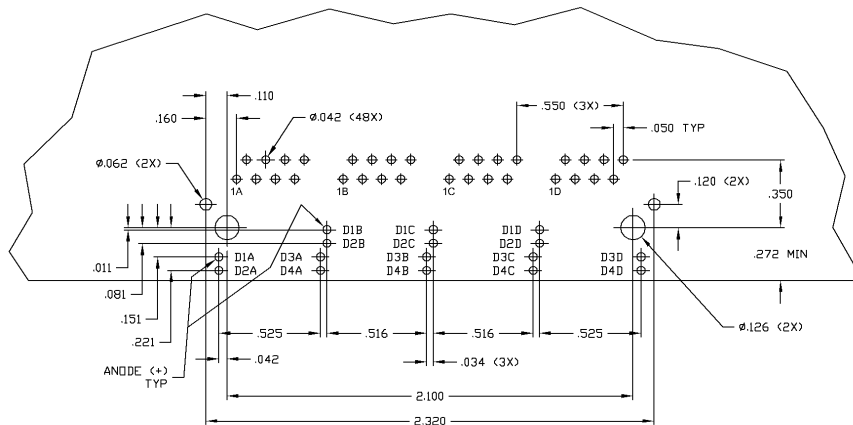
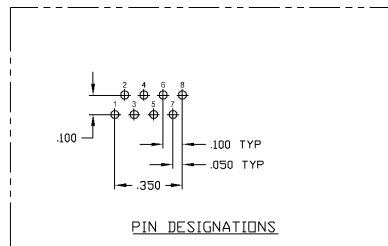
DECOUPLING CAPACITOR	LED1	LED2	PART NUMBER

THIS DRAWING IS A CONTROLLED DOCUMENT		1. VARIES - DOCUMENT		2. TYPE		Tyco Electronics Corporation	
DATE	REV	DESCRIPTION	DATE	REV	DESCRIPTION	DATE	REV
DESIGNED BY		CHECKED BY		APPROVED BY		DATE	
MATERIAL		PROCESS		SCALE		SHEET	
				4:1		1 of 2	

766 SERIES MAGNETIC CIRCUIT



C1 = 1000pF, 2kV CAPACITOR
 R1-R4 = 75 OHMS, 1/16 W RESISTOR



SUGGESTED PCB LAYOUT
 (COMPONENT SIDE)

THIS DRAWING IS A CONTROLLED DOCUMENT.		REV	DATE	REVISIONS
REV		AA	22	1
REV				2
REV				3
REV				4
REV				5
REV				6
REV				7
REV				8

DESIGNER	DATE	BY	DATE	BY	DATE	BY

ITEM	DESCRIPTION	REV
1	134 MAGNETIC MODULAR JACK, SHIELDED, 742 SCHEMATIC, 66 SERIES CIRCUIT, SHIELDED, OPTIONAL DECOUPLING CAPACITOR, RESISTOR AND LEDS	
2	105-2100	
3	105-2100	
4	105-2100	
5	105-2100	
6	105-2100	
7	105-2100	
8	105-2100	
9	105-2100	
10	105-2100	
11	105-2100	
12	105-2100	
13	105-2100	
14	105-2100	
15	105-2100	
16	105-2100	
17	105-2100	
18	105-2100	
19	105-2100	
20	105-2100	
21	105-2100	
22	105-2100	
23	105-2100	
24	105-2100	
25	105-2100	
26	105-2100	
27	105-2100	
28	105-2100	
29	105-2100	
30	105-2100	
31	105-2100	
32	105-2100	
33	105-2100	
34	105-2100	
35	105-2100	
36	105-2100	
37	105-2100	
38	105-2100	
39	105-2100	
40	105-2100	
41	105-2100	
42	105-2100	
43	105-2100	
44	105-2100	
45	105-2100	
46	105-2100	
47	105-2100	
48	105-2100	
49	105-2100	
50	105-2100	
51	105-2100	
52	105-2100	
53	105-2100	
54	105-2100	
55	105-2100	
56	105-2100	
57	105-2100	
58	105-2100	
59	105-2100	
60	105-2100	
61	105-2100	
62	105-2100	
63	105-2100	
64	105-2100	
65	105-2100	
66	105-2100	
67	105-2100	
68	105-2100	
69	105-2100	
70	105-2100	
71	105-2100	
72	105-2100	
73	105-2100	
74	105-2100	
75	105-2100	
76	105-2100	
77	105-2100	
78	105-2100	
79	105-2100	
80	105-2100	
81	105-2100	
82	105-2100	
83	105-2100	
84	105-2100	
85	105-2100	
86	105-2100	
87	105-2100	
88	105-2100	
89	105-2100	
90	105-2100	
91	105-2100	
92	105-2100	
93	105-2100	
94	105-2100	
95	105-2100	
96	105-2100	
97	105-2100	
98	105-2100	
99	105-2100	
100	105-2100	