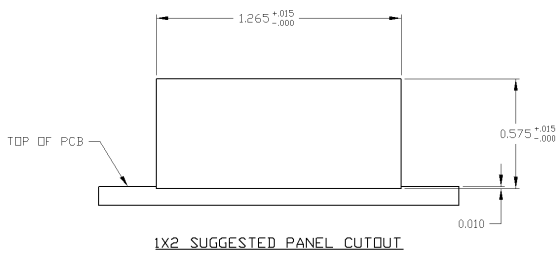
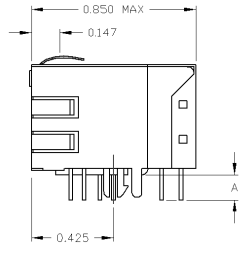
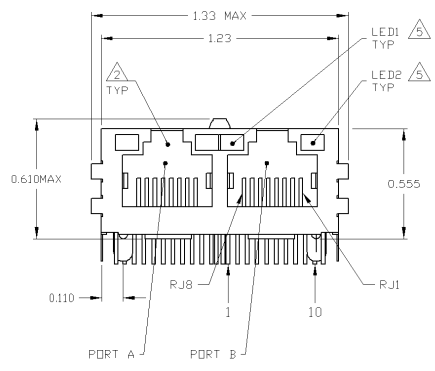
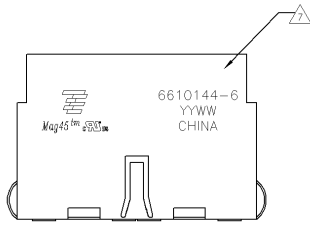


MECHANICAL:



- 1. MATERIALS:
 - HOUSING - THERMOPLASTIC PET POLYESTER FLAMMABILITY RATING UL 94V-0
 - SHIELD - 0.010" THICK, C26800 BRASS PREPLATED WITH 30µINCH MIN SEMI-BRIGHT NICKEL SOLDER TABS POST DIPPED WITH 10µINCH MIN SAC SOLDER
 - MOD JACK CONTACTS - 0.0157" X 0.018" PHOSPHOR BRONZE 50µINCH MIN OVERALL NICKEL UNDERPLATE WITH SELECT 50µINCH MIN HARD GOLD FINISH PLATE
 - SOLDER TAILS WITH 100µINCH MIN MATTE TIN AND/OR SAC SOLDER DIP
 - LIGHT EMITTING DIODE (LED) - DIFFUSED EPOXY LENS, 0.026" X 0.020" CARBON STEEL WIREFRAME LEADS PRE-PLATED WITH 80µINCH SILVER OVER 40µINCH NICKEL UNDERPLATE OVER 40µINCH COPPER UNDERPLATE, POST-PLATED WITH 100µINCH MIN MATTE TIN AND/OR SAC SOLDER DIP OR PURE TIN SOLDER DIP
- 2. RJ45 JACK CAVITY CONFORMS TO FCC RULES AND REGULATIONS PART 68, SUB PART F.
- 3. MAGNETICS
 - IMPEDANCE: 100 OHMS
 - TURNS RATIO (CHIP, CABLE) 1:1 ALL FOUR PAIRS
 - OPEN CIRCUIT INDUCTANCE (OCL): 350µH MIN @100kHz, 0.1VRMS, 8mADC BIAS FROM 0°C TO 70°C, ALL FOUR PAIRS
 - ALL FOUR PAIRS BI-DIRECTIONAL
 - PERFORMANCE @ 25°C:
 - INSERTION LOSS (IL): 1.1dB MAX FROM 0.5MHZ TO 100MHZ
 - RETURN LOSS (RL): 18dB MIN FROM 0.5MHZ TO 40MHZ
 - 12-20LOG(f/80)dB MIN FROM 40.1MHZ TO 100MHZ
 - CROSSTALK ATTENUATION: 35dB MIN FROM 0.5MHZ TO 40MHZ
 - 33-20*LOG(f/50)dB MIN FROM 40.1MHZ TO 100MHZ
 - COMMON MODE REJECTION RATIO (CMRR): 30dB MIN FROM 0.5MHZ TO 100MHZ
 - ISOLATION VOLTAGE: COMPLIES WITH IEEE802.3 2002, PARA 4.0.6.1.1, ITEM b.
- 4. OPERATING TEMPERATURE FROM 0°C TO +70°C.
- 5. LED IS DRIVEN WITH CONSTANT CURRENT AT APPROX 28mA
 - LED COLOR/DOMINANT WAVELENGTH(GREEN) 568nm TYP. AT IF=20mA
 - FORWARD VOLTAGE (VF) GREEN 2.2V TYP. AT IF=20mA
 - DOMINANT WAVELENGTH(YELLOW) 589nm TYP. AT IF=20mA
 - FORWARD VOLTAGE (VF) YELLOW 2.1V TYP. AT IF=20mA
- 6. THE MAGNETICS ARE SYMMETRICAL AND SUPPORT AUTO-MDI/MDIX.
- 7. TYCO ELECTRONICS LOGO, PART NUMBER, DATE CODE, COUNTRY OF ORIGIN AND AGENCY APPROVAL MARKING IN APPROXIMATE LOCATION SHOWN.
- 8. THESE PARTS ARE RECOMMENDED FOR WAVE SOLDERING PROCESS, PEAK WAVE SOLDERING TEMPERATURE IS 265°C MAX, 10 SECONDS MAX.

| | | | |
|-------------|--------------|--------------|-------------|
| 0.110±0.010 | GREEN/YELLOW | GREEN/YELLOW | 2-6610144-6 |
| 0.145±0.010 | GREEN | YELLOW | 6610144-8 |
| 0.145±0.010 | GREEN/YELLOW | GREEN/YELLOW | 6610144-6 |
| DIM "A" | LED1 | LED2 | PART NUMBER |

| | | | | | | |
|--|------|----------|------|----|------|----|
| THIS DRAWING IS A CONTROLLED DOCUMENT. | | APPROVED | DATE | BY | DATE | BY |
| DESIGNED | DATE | BY | DATE | BY | DATE | BY |
| DRAWN | DATE | BY | DATE | BY | DATE | BY |
| CHECKED | DATE | BY | DATE | BY | DATE | BY |
| APPROVED | DATE | BY | DATE | BY | DATE | BY |
| CUSTOMER DRAWING | | SCALE | 1 | OF | 2 | |

