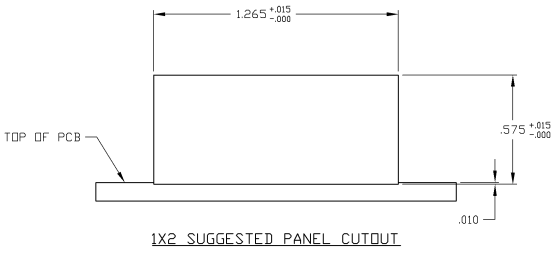
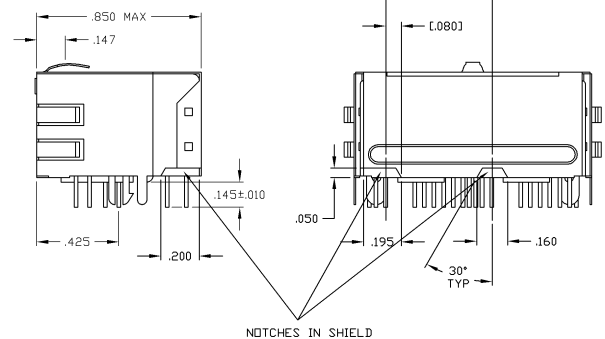
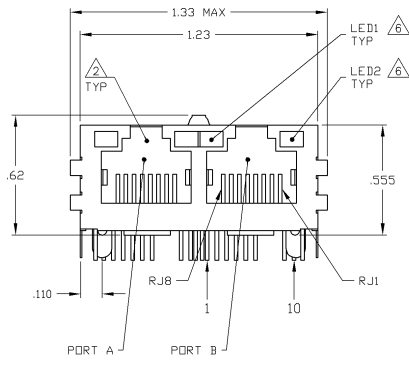
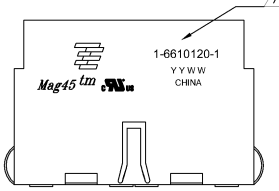


MECHANICAL:



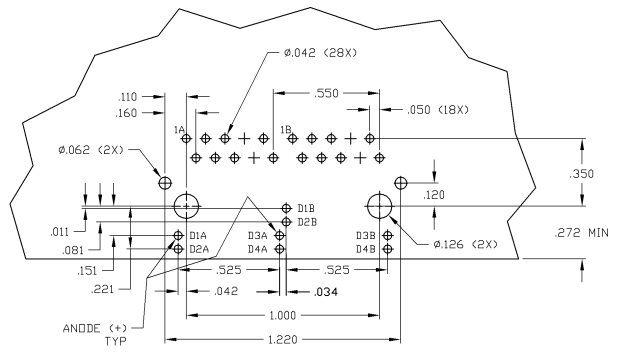
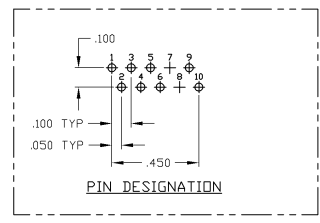
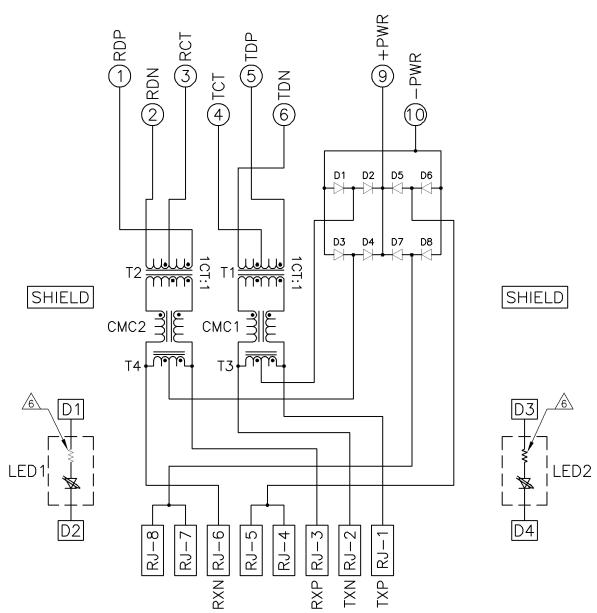
- △ MATERIALS:
 - HOUSING - THERMOPLASTIC PET POLYESTER FLAMMABILITY RATING UL 94V-0
 - SHIELD - .010" THICK C26000 BRASS PREPLATED WITH 50μm MIN SEMI-BRIGHT NICKEL SOLDER TABS POST DIPPED WITH 100μm MIN SAC SOLDER
 - MOD JACK CONTACTS - 0.8157 X 0.8" PHOSPHOR BRONZE, 50μm MIN OVERALL NICKEL UNDERPLATE WITH SELECT 50μm MIN HARD GOLD FINISH PLATE, SOLDER TAILS WITH 100μm MIN MATTE TIN AND/OR SAC SOLDER DIP
 - LIGHT EMITTING DIODE(LED) - DIFFUSED EPOXY LENS, 800' X .020" CARBON STEEL WIREFRAME LEADS PRE-PLATED WITH 80μm SILVER OVER 50μm NICKEL UNDERPLATE OVER 40μm COPPER UNDERPLATE POST-PLATED WITH 100μm MIN MATTE TIN AND/OR SAC SOLDER DIP OR PURE TIN SOLDER DIP
- △ RIAS JACK CAVITY CONFORMS TO FCC RULES AND REGULATIONS PART 68, SUB PART F.
- △ MAGNETICS:
 - IMPEDANCE: 100 OHMS
 - TURNS RATIO (DIP-CABLE) TX +11, RX +11
 - OPEN CIRCUIT INDUCTANCE (OCL) 35μH MIN @100kHz, 0.1VRMS
 - BIAS CURRENT FROM 0°C TO 70°C, TX AND RX
 - PDC CURRENT: 35mA MAX
 - PERFORMANCE @ 25°C:
 - INSERTION LOSS (IL): 1.1dB MAX FROM 0.5MHz TO 100MHz
 - RETURN LOSS (RL): 18dB MIN FROM 0.5MHz TO 30MHz
 - 18-20LOG(f/30dB) MIN FROM 30 MHz TO 60MHz
 - 15dB MIN FROM 60 MHz TO 80MHz
 - CROSSTALK ATTENUATION: 35dB MIN FROM 0.5MHz TO 40MHz
 - 33-20LOG(f/50dB) MIN FROM 40 MHz TO 100MHz
 - COMMON MODE REJECTION RATIO (CMRR): 30dB MIN FROM 0.5MHz TO 100MHz
 - ISOLATION VOLTAGE: COMPLES WITH IEEE802.3af 2003, PARA 33.4.1, ITEM a
- 4. OPERATING TEMPERATURE FROM 0°C TO +70°C
- △ INDICATED CONNECTIONS ARE FOR NIC CONFIGURATION. THE MAGNETICS ARE SYMMETRICAL, AND SUPPORT AUTO-MD/MIDX.
- △ LEDS ARE DRIVEN WITH 5V VOLTAGE AND THE MAX OPERATING CURRENT IS 20mA. THE 250 OHM RESISTOR IS INCLUDED.
- △ LED COLOR DOMINANT WAVELENGTH (λD): GREEN 568 nm TYP @ VF=5V FORWARD CURRENT (IF) GREEN 10mA TYP @ VF=5V
- △ TYSO ELECTRONICS LOGO, PART NUMBER, DATE CODE, COUNTRY OF ORIGIN AND AGENCY APPROVAL MARKING IN APPROXIMATE LOCATION SHOWN.
- 8. THE PART IS RECOMMENDED FOR WAVE SOLDERING PROCESS. PREHEAT TEMPERATURE IS 120 °C TO 160 °C, 120 SECONDS TO 180 SECONDS. PEAK WAVE SOLDERING TEMPERATURE IS 260°C MAX, 10 SECONDS MAX.

GREEN	GREEN	1-6610120-1
LED1	LED2	PART NUMBER

THIS DRAWING IS A CONTROLLED DOCUMENT		REV A	DATE 09/22/2009	BY TYSO Electronics	DATE 09/22/2009
DESIGNED	HECK	DESIGNED	HECK	DATE	09/22/2009
DRAWN	HECK	DRAWN	HECK	DATE	09/22/2009
CHECKED	HECK	CHECKED	HECK	DATE	09/22/2009
APPROVED	HECK	APPROVED	HECK	DATE	09/22/2009
DATE	09/22/2009	DATE	09/22/2009	DATE	09/22/2009
SCALE	4:1	SCALE	4:1	SCALE	4:1
CUSTOMER DRAWING		CUSTOMER DRAWING		CUSTOMER DRAWING	

ELECTRICAL:

7D15 SERIES MAGNETIC CIRCUIT



D1-D8 ARE RECTIFIER DIODES.
 FORWARD VOLTAGE $V_F = 1.2V$ MAX @ $I_F = 0.5A$
 FORWARD CURRENT $I_F = 0.5A$ MAX
 REVERSE VOLTAGE $V_R = 80V$ MAX

R1-R4 = 75 OHMS, 1/16 W, 5% RESISTORS

SUGGESTED PCB LAYOUT
 (Component Side)

THIS DRAWING IS A CONTROLLED DOCUMENT		REV	DATE	REVISIONS
AA		22		REWORK
				SEE SHEET 1
DRAWN BY		DESIGNED BY	CHECKED BY	APPROVED BY
DATE		DATE	DATE	DATE
SCALE		CUSTOMER DRAWING		