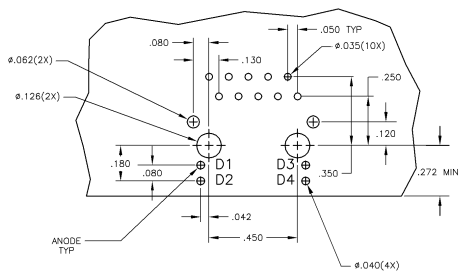
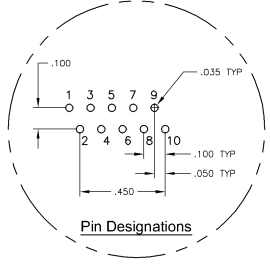
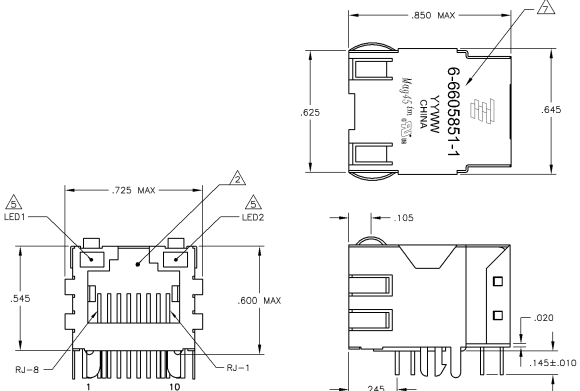


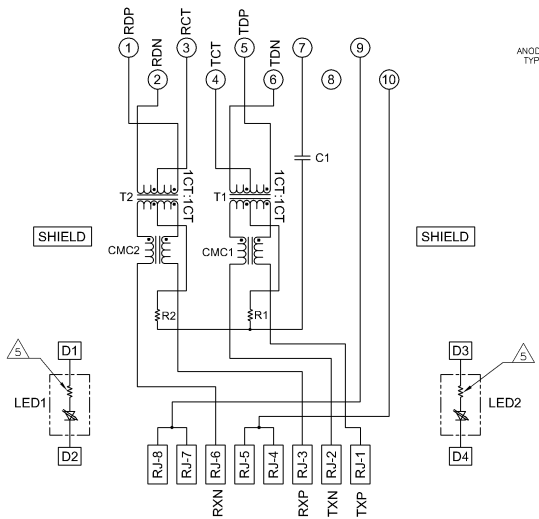
**MECHANICAL:**



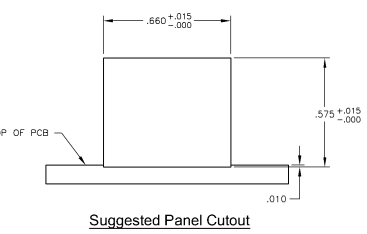
**Suggested PCB Layout (Component Side)**

**ELECTRICAL:**

**7U26ET MAGNETIC CIRCUIT**



C1 = 1000 pF, 2kV DECOUPLING CAPACITOR  
R1-R2 = 75 OHMS, 1/16W, 5% RESISTORS



**Suggested Panel Cutout**

- △ MATERIALS:
  - HOUSING - THERMOPLASTIC PET POLYESTER FLAMMABILITY RATING UL 94V-0
  - SHIELD - .010" THICK, C28800 BRASS PREPLATED WITH 30μINCH MIN SEMI-BRIGHT NICKEL. SOLDER TABS POST DIPPED WITH 100μINCH MIN SAC SOLDER.
  - MOD JACK CONTACTS - .0015" x 0.018" PHOSPHOR BRONZE, 50μINCH MIN OVERALL NICKEL UNDERPLATE, WITH SELECT 50μINCH MIN HARD GOLD FINISH PLATE.
  - SOLDER TABS WITH 100μINCH MIN MATTE TIN AND/OR SAC SOLDER DIP.
  - LIGHT EMITTING DIODE(LED) - DIFFUSED EPOXY LENS, .020" x .020" CARBON STEEL WIREFRAME LEADS PRE-PLATED WITH 80μINCH SILVER OVER 50μINCH NICKEL UNDERPLATE OVER 40μINCH COPPER UNDERPLATE. POST-PLATED WITH 100μINCH MIN MATTE TIN AND/OR SAC SOLDER DIP OR PURE TIN SOLDER DIP.
- △ MAGNETICS
  - IMPEDANCE: 100 OHMS
  - TURNS RATIO (CHP CABLE): TX = 11, RX = 11
  - OPEN CIRCUIT INDUCTANCE (OCIL): 350μH MIN @ 100MHz, 0.1V RMS, 8mA DC BIAS FROM -40°C TO +85°C, TX AND RX
  - POE CURRENT: 350mA DC MAX
  - PERFORMANCE @ 25°C
    - INSERTION LOSS (IL): 1.1dB MAX FROM 0.5MHz TO 100MHz
    - RETURN LOSS (RL): 18dB MIN FROM 0.5MHz TO 30MHz
    - 18-20dBi / 30dB MIN FROM 30MHz TO 60MHz
    - 12dB MIN FROM 60MHz TO 300MHz
    - CROSSTALK ATTENUATION: 35dB MIN FROM 0.5MHz TO 40MHz
    - 33-20dBi / 50dB MIN FROM 4.0MHz TO 100MHz
    - COMMON MODE REJECTION RATIO (CMRR): 30dB MIN FROM 0.5MHz TO 100MHz
    - ISOLATION VOLTAGE: COMPLIES WITH IEEE802.3af 2003, PARA 33.4.1, ITEM a
- 4. OPERATING TEMPERATURE: FROM -40° - +85°C INDUSTRIAL TEMPERATURE RATED
- △ LEADS WITH BUILT-IN RESISTOR
  - LEADS ARE DRIVEN WITH 5V VOLTAGE AND THE MAX OPERATING CURRENT IS 20mA.
  - LED COLOR: DOMINANT WAVELENGTH (nm): GREEN 588 nm TYP. @ VF=5V
  - FORWARD CURRENT (IF): GREEN 12 mA TYP. @ VF=5V
  - DOMINANT WAVELENGTH (nm): YELLOW 588 nm TYP. @ VF=5V
  - FORWARD CURRENT (IF): YELLOW 13 mA TYP. @ VF=5V
- △ INDICATED MAGNETIC CONNECTIONS ARE SYMMETRICAL TO SUPPORT AUTO-MOUNTING.
- △ TYCO ELECTRONICS LOGO, PART NUMBER, DATE CODE, COUNTRY OF ORIGIN AND AGENCY APPROVAL MARKING IN APPROXIMATE LOCATION SHOWN.
- 8. THE PART IS RECOMMENDED FOR WAVE SOLDERING PROCESS, PEAK WAVE SOLDERING TEMPERATURE IS 260°C MAX, 10 SECONDS MAX.

THIS DRAWING IS A CONTROLLED DOCUMENT		REV	DATE	BY	CHK	REVISIONS
AA	22					REV PER ECO-08-09-07711
SUBJECT: 1X1 MAG45(TM), MODULAR JACK, 7U26 MAGNETIC CIRCUIT, SHIELDED, WITH RESISTOR LEADS		PART NUMBER: 6-6605851-1				
MATERIAL: 1X1 MAG45(TM), MODULAR JACK, 7U26 MAGNETIC CIRCUIT, SHIELDED, WITH RESISTOR LEADS		CUSTOMER DRAWING: 6605851				