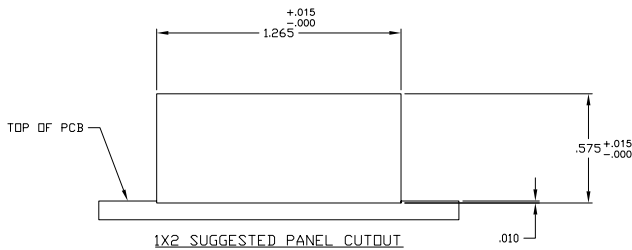
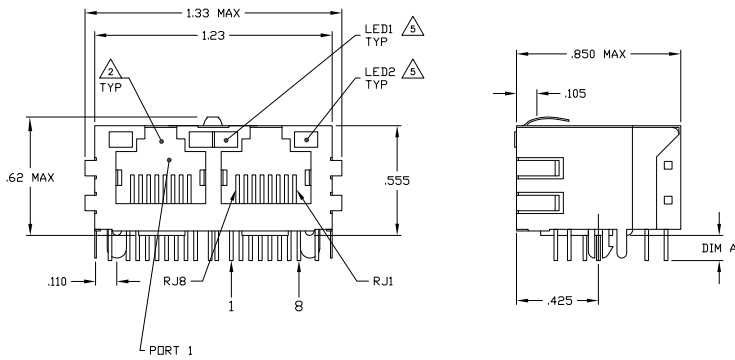
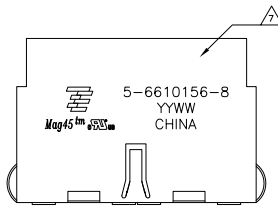


MECHANICAL:



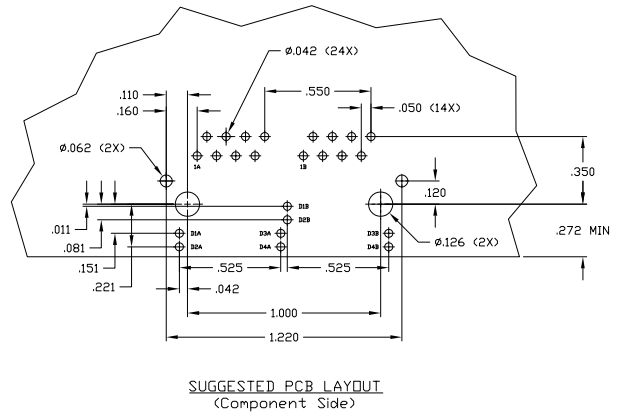
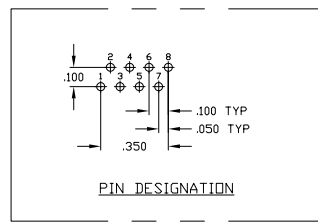
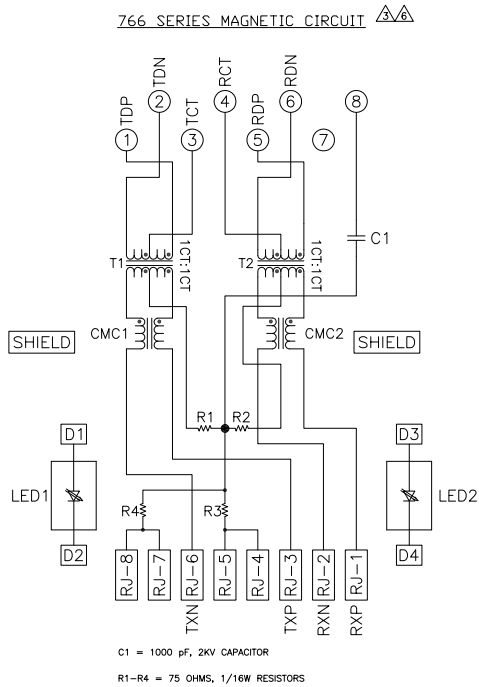
- △ MATERIALS:
- HOUSING - THERMOPLASTIC PET POLYESTER FLAMMABILITY RATING UL 94V-0
 - SHIELD - 0.015" THICK CARBON BRASS PREPLATED WITH 100μNICH MIN SEMI-BRIGHT NICKEL, SOLDER TABS POST DIPPED WITH 100μNICH MIN SAC SOLDER.
 - MID JACK CONTACTS - 0.015" X 0.018" PHOSPHOR BRONZE, 50μNICH MIN OVERALL NICKEL UNDERPLATE WITH SELECT 50μNICH MIN HARD GOLD FINISH PLATE.
 - SOLDER TABS WITH 100μNICH MIN MATTE TIN AND/OR SAC SOLDER DIP.
 - LIGHT EMITTING BODULES - DIFFUSED EPOXY LENS 0.020" X 0.020" CARBON STEEL WIREFRAME LEADS PRE-PLATED WITH 80μNICH SILVER OVER 40μNICH NICKEL UNDERPLATE OVER 40μNICH COPPER UNDERPLATE, POST-PLATED WITH 100μNICH MATTE TIN AND/OR SAC SOLDER DIP OR PURE TIN SOLDER DIP.
- △ RIAS JACK CAVITY CONFORMS TO FCC RULES AND REGULATIONS PART 68, SUB PART F.
- △ MAGNETICS
- IMPEDANCE: 100 OHMS
 - TURNS RATIO (CHP. CABLE): TX + 11, RX + 11
 - OPEN CIRCUIT INDUCTANCE (OCL): 350μH MIN @100MHz, 0.1VRMS, BRADIC BIAS FROM 0°C TO 70°C, TX AND RX
 - PERFORMANCE @ 25°C:
 - INSERTION LOSS (IL): 1.5dB MAX FROM 0.5MHz TO 100MHz
 - RETURN LOSS (RL): 18dB MIN FROM 0.5MHz TO 30MHz
 - 18-20LOG(F/30dB) MIN FROM 30 MHz TO 60MHz
 - 12dB MIN FROM 60 MHz TO 80MHz
 - CROSSTALK ATTENUATION: 35dB MIN FROM 0.5MHz TO 4.0MHz
 - 33-20+LOG(F/50dB) MIN FROM 4.0MHz TO 100MHz
 - COMMON MODE REJECTION RATIO (CMRR): 30dB MIN FROM 0.5MHz TO 100MHz
 - ISOLATION VOLTAGE: COMPLES WITH IEEE62.2.2002, PARA A.23.5.11, ITEM 5.
4. OPERATING TEMPERATURE: FROM 0°C TO -70°C.
- △ THE LED WITH 250 OHM RESISTORS, LED IS DRIVEN WITH 5V VOLTAGE AND THE MAX OPERATING CURRENT IS 20mA LED COLOR:
- DOMINANT WAVELENGTH (LD) GREEN 568 nm TYP. AT VF=5V
 - FORWARD CURRENT (IF) GREEN 12 mA TYP. AT VF=5V
 - DOMINANT WAVELENGTH (LD) YELLOW 588 nm TYP. AT VF=5V
 - FORWARD CURRENT (IF) YELLOW 13 mA TYP. AT VF=5V
- △ INDICATED CONNECTIONS ARE FOR A HUB CONFIGURATION. THE MAGNETICS ARE SYMMETRICAL AND SUPPORT AUTO-MDX.
- △ TYCO ELECTRONICS LOGO, PART NUMBER, DATE CODE, COUNTRY OF ORIGIN AND APPROVAL MARKING IN APPROXIMATE LOCATION AS SHOWN.
8. THE PART IS RECOMMENDED FOR WAVE SOLDERING PROCESS, PEAK WAVE SOLDERING TEMPERATURE IS 265°C MAX, 10 SECONDS MAX.

.090±.010	GREEN	YELLOW	2-6610156-8
.145±.010	GREEN	YELLOW	5-6610156-8
DIM A	LED1 △	LED2 △	PART NUMBER

THIS DRAWING IS A CONTROLLED DOCUMENT		ATTACH - DOCUMENT		Tyco Electronics Corporation	
DESIGNER	DATE	APPROVED	DATE	REV	DESCRIPTION
					1X2 MAG45(TM) MODULAR JACK, 7Hz SCHEMATIC, 66 SERIES CIRCUIT, DECOUPLING CAPACITOR, SHIELDED, WITH GREEN/YELLOW LEADS
UNLESS	INDICATED	SCALE			PERMITTED TO
		A1	00779	6610156	
		CUSTOMER DRAWING	SCALE	1:1	SHEET 1 OF 2

THIS DRAWING IS UNCLASSIFIED
 UNLESS INDICATED OTHERWISE
 BY THE APPLICABLE CONTROLLING AUTHORITY

REV	DESCRIPTION	DATE	BY	APP
AA	22			
SEE SHEET 1				



DATE	BY	CHKD	APP'D	REV	DESCRIPTION
10/24/00	AA	AA	AA	1	INITIAL DESIGN
11/01/00	AA	AA	AA	2	REVISED TO ADD SHIELDING
11/01/00	AA	AA	AA	3	REVISED TO ADD DIMENSIONS
11/01/00	AA	AA	AA	4	REVISED TO ADD PIN DESIGNATION
11/01/00	AA	AA	AA	5	REVISED TO ADD MAGNETIC CIRCUIT
11/01/00	AA	AA	AA	6	REVISED TO ADD LED INDICATORS
11/01/00	AA	AA	AA	7	REVISED TO ADD DIMENSIONS
11/01/00	AA	AA	AA	8	REVISED TO ADD SHIELDING
11/01/00	AA	AA	AA	9	REVISED TO ADD DIMENSIONS
11/01/00	AA	AA	AA	10	REVISED TO ADD PIN DESIGNATION
11/01/00	AA	AA	AA	11	REVISED TO ADD MAGNETIC CIRCUIT
11/01/00	AA	AA	AA	12	REVISED TO ADD LED INDICATORS
11/01/00	AA	AA	AA	13	REVISED TO ADD DIMENSIONS
11/01/00	AA	AA	AA	14	REVISED TO ADD SHIELDING
11/01/00	AA	AA	AA	15	REVISED TO ADD DIMENSIONS
11/01/00	AA	AA	AA	16	REVISED TO ADD PIN DESIGNATION
11/01/00	AA	AA	AA	17	REVISED TO ADD MAGNETIC CIRCUIT
11/01/00	AA	AA	AA	18	REVISED TO ADD LED INDICATORS
11/01/00	AA	AA	AA	19	REVISED TO ADD DIMENSIONS
11/01/00	AA	AA	AA	20	REVISED TO ADD SHIELDING
11/01/00	AA	AA	AA	21	REVISED TO ADD DIMENSIONS
11/01/00	AA	AA	AA	22	REVISED TO ADD PIN DESIGNATION

THIS DRAWING IS A CONTROLLED DOCUMENT. FOR ATTENTION - DO NOT REMOVE FROM FILE. THIS DRAWING IS THE PROPERTY OF THE COMPANY AND IS NOT TO BE REPRODUCED OR COPIED IN ANY MANNER WITHOUT THE WRITTEN PERMISSION OF THE COMPANY. CUSTOMER DRAWING. 100779 6610156. SCALE 1:1 SHEET 2 OF 2.