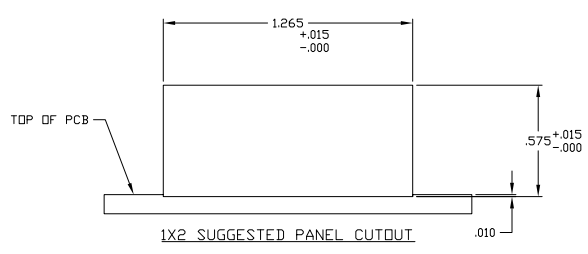
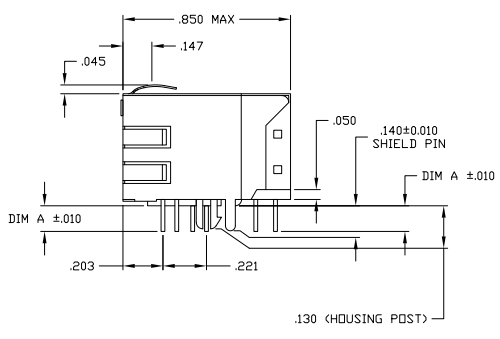
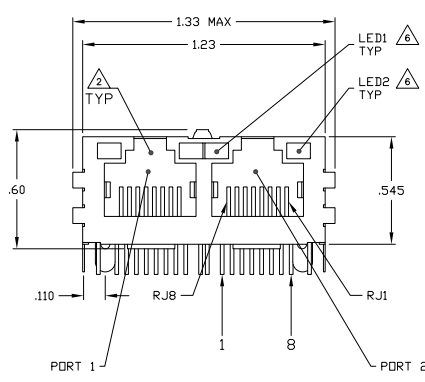
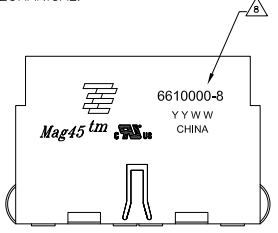


REV	DATE	DESCRIPTION	BY	CHKD
AA	22			
C		REV PER ECO-10-011815		

MECHANICAL:



- △ MATERIALS:  
 -HOUSING - THERMOPLASTIC PET POLYESTER FLAMMABILITY RATING UL 94V-0  
 -SHIELD - .010" THICK, C26800 BRASS PREPLATED WITH 30.0μINCH MIN SEMI-BRIGHT NICKEL. SOLDER TABS POST DIPPED WITH 100.0μINCH MIN SAC SOLDER.  
 -MOD JACK CONTACTS - 0.0157 X 0.018" PHOSPHOR BRONZE, 50.0μINCH MIN OVERALL NICKEL UNDERPLATE WITH SELECT 50.0μINCH MIN HARD GOLD FINISH PLATE. SOLDER TAILS WITH 100.0μINCH MIN MATTE TIN AND/OR SAC SOLDER DIP.  
 -LIGHT EMITTING DIODE(LED) - DIFFUSED EPOXY LENS, .020" X .020" CARBON STEEL WIREFRAME LEADS PRE-PLATED WITH 80.0μINCH SILVER OVER 40.0μINCH NICKEL UNDERPLATE OVER 40.0μINCH COPPER UNDERPLATE. POST-PLATED WITH 100.0μINCH MATTE TIN AND/OR SAC SOLDER DIP OR PURE TIN SOLDER DIP.
- △ 2 RJ45 JACK CAVITY CONFORMS TO FCC RULES AND REGULATIONS PART 68, SUB PART F.
- △ 3 MAGNETICS  
 -IMPEDANCE: 100 OHMS  
 -TURNS RATIO (RHP CABLE): TX = 11, RX = 11  
 -OPEN CIRCUIT INDUCTANCE (OCL): 350.0pH MIN @ 100MHz, 0.1VRMS, 8mA DC BIAS FROM 0°C TO 70°C, TX AND RX  
 -PERFORMANCE @ 25°C  
 INSERTION LOSS (IL): 1.5dB MAX FROM 0.5MHz TO 100MHz  
 RETURN LOSS (RL): 18dB MIN FROM 0.5MHz TO 30MHz  
 18-20LOG(I/F) 30dB MIN FROM 30.0MHz TO 60MHz  
 12dB MIN FROM 60.0MHz TO 80MHz  
 CROSSTALK ATTENUATION: 35dB MIN FROM 0.5MHz TO 4.0MHz  
 33-20LOG(I/F) 50dB MIN FROM 4.0MHz TO 100MHz  
 COMMON MODE REJECTION RATIO (CMR): 30dB MIN FROM 0.5MHz TO 100MHz  
 -ISOLATION VOLTAGE: COMPLIES WITH IEEE802.3 2002, PARA 23.5.1.1, ITEM b.
- △ 4 C1 IS AN OPTIONAL. IF NO CAPACITOR, TRACE IS CONTINUOUS. SEE TABLE FOR PRESENCE OF CAPACITOR IN DIFFERENT CONFIGURATIONS.
- 5. OPERATING TEMPERATURE FROM 0° TO -70°C
- △ 6 THE 250 OHM LED RESISTORS ARE OPTIONAL. PLEASE SEE CHART FOR PRESENCE OR ABSENCE OF LED RESISTORS. IF THE LED WITHOUT 250 OHM RESISTORS, LED IS DRIVEN WITH CONSTANT CURRENT AT APPROX 20mA  
 LED COLOR: DOMINANT WAVELENGTH (D0): GREEN 568 nm TYP. @ IF=20mA  
 FORWARD VOLTAGE (VF): GREEN 2.2V TYP. @ IF=20mA  
 DOMINANT WAVELENGTH (D0): YELLOW 588 nm TYP. @ IF=20mA  
 FORWARD VOLTAGE (VF): YELLOW 2.1V TYP. @ IF=20mA  
 DOMINANT WAVELENGTH (D0): ORANGE 605 nm TYP. @ IF=20mA  
 FORWARD VOLTAGE (VF): ORANGE 2.0V TYP. @ IF=20mA  
 IF THE LED WITH 250 OHM RESISTORS, LED IS DRIVEN WITH 5V VOLTAGE AND THE MAX OPERATING CURRENT IS 20mA  
 LED COLOR: DOMINANT WAVELENGTH (D0): GREEN 568 nm TYP. @ VF=5V  
 FORWARD CURRENT (IF): GREEN 12 mA TYP. @ VF=5V  
 DOMINANT WAVELENGTH (D0): YELLOW 588 nm TYP. @ VF=5V  
 FORWARD CURRENT (IF): YELLOW 15 mA TYP. @ VF=5V
- △ 7 INDICATED CONNECTIONS ARE FOR WLC CONFIGURATION. THE MAGNETICS ARE SYMMETRICAL AND SUPPORT AUTO-MOD/MODK.
- △ 8 TYCO ELECTRONICS LOGO, PART NUMBER, DATE CODE, COUNTRY OF ORIGIN AND AGENCY APPROVAL MARKING IN APPROXIMATE LOCATION SHOWN.
- 9. THESE PARTS ARE RECOMMENDED FOR WAVE SOLDERING PROCESS, PEAK WAVE SOLDERING TEMPERATURE IS 365°C, 10SECONDS MAX.

DIM A	LED RESISTOR	DECOUPLING CAPACITOR	LED1	LED2	PART NUMBER
0.087	YES	YES	GREEN	YELLOW	7-6610000-1
0.145	YES	YES	GREEN	GREEN	6-6610000-1
0.145	YES	YES	GREEN	YELLOW	5-6610000-1
0.145	NO	NO	GREEN	YELLOW	6610000-8

THIS DRAWING IS A CONTROLLED DOCUMENT.

REV	DATE	DESCRIPTION	BY	CHKD
1				

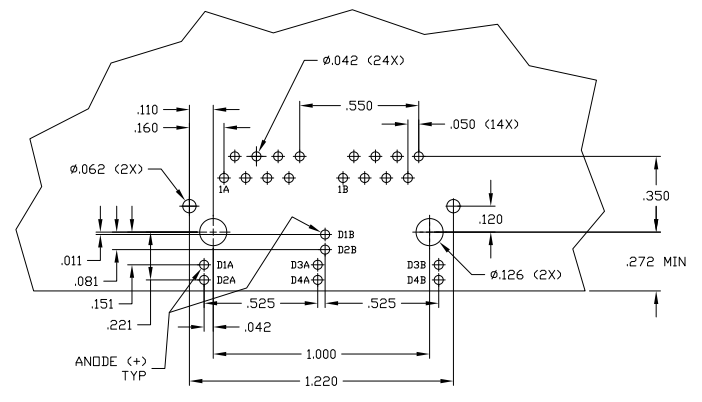
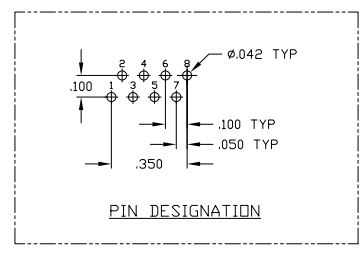
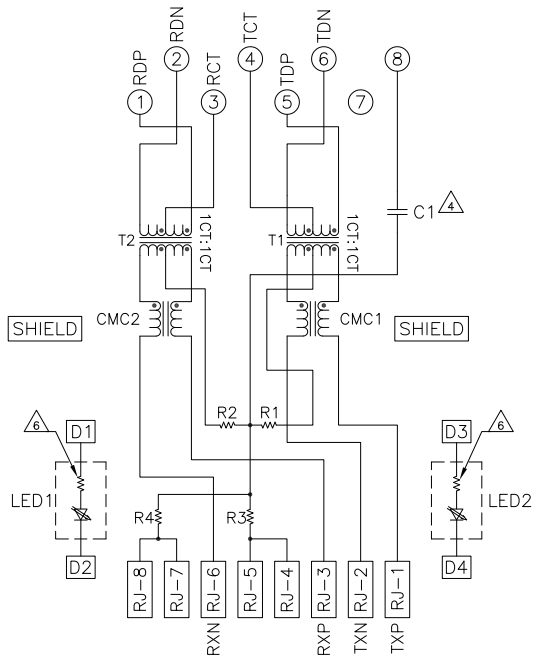
1X2 MAG45(TM) MODULAR JACK, 7N2 SCHEMATIC, 26 SERIES CIRCUIT, SHIELDED, WITH LEADS

DATE: 007799  
 PART: 6610000

CUSTOMER DRAWING

REV	DATE	DESCRIPTION	BY	APP
AA	22	SEE SHEET 1	-	-

726 SERIES MAGNETIC CIRCUIT



SUGGESTED PCB LAYOUT  
(Component Side)

THIS DRAWING IS A CONTROLLED DOCUMENT.		REV	DATE	DESCRIPTION	BY	APP
DRAWN		AA	22	SEE SHEET 1	-	-
CHECKED		TYSO ELECTRONICS CORPORATION				
DESIGNED		108-2100				
APPROVED		100779				
CUSTOMER DRAWING		7N2 SCHEMATIC, 26 SERIES CIRCUIT, SHIELDED, WITH LEADS				
SCALE		4:1				
SHEET		2				
OF		2				